



Yealink

YEALINK IP PHONE PORTFOLIO

A photograph of a diverse group of business professionals in a modern office setting, overlaid with a semi-transparent green filter. The scene shows several people seated around a large conference table with laptops and coffee cups, while one woman stands in the background smiling. The text '01. ABOUT YEALINK' is centered in white.

01. ABOUT YEALINK

Company History

19 Years

Go Public

2017

Employees

1000+

R&D Engineers

50%+

R&D Investment

14M+
USD

Channel Network

140+

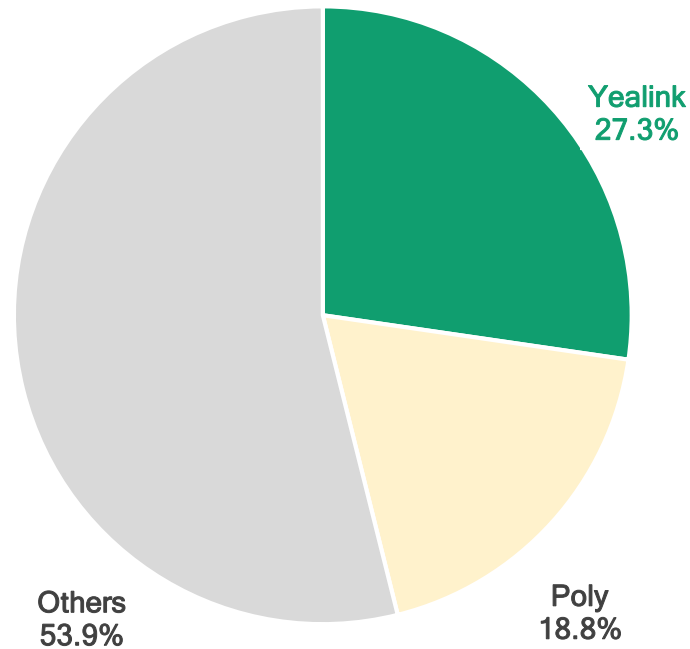
SIP Market Share

NO.1

Customer Satisfaction

NO.1

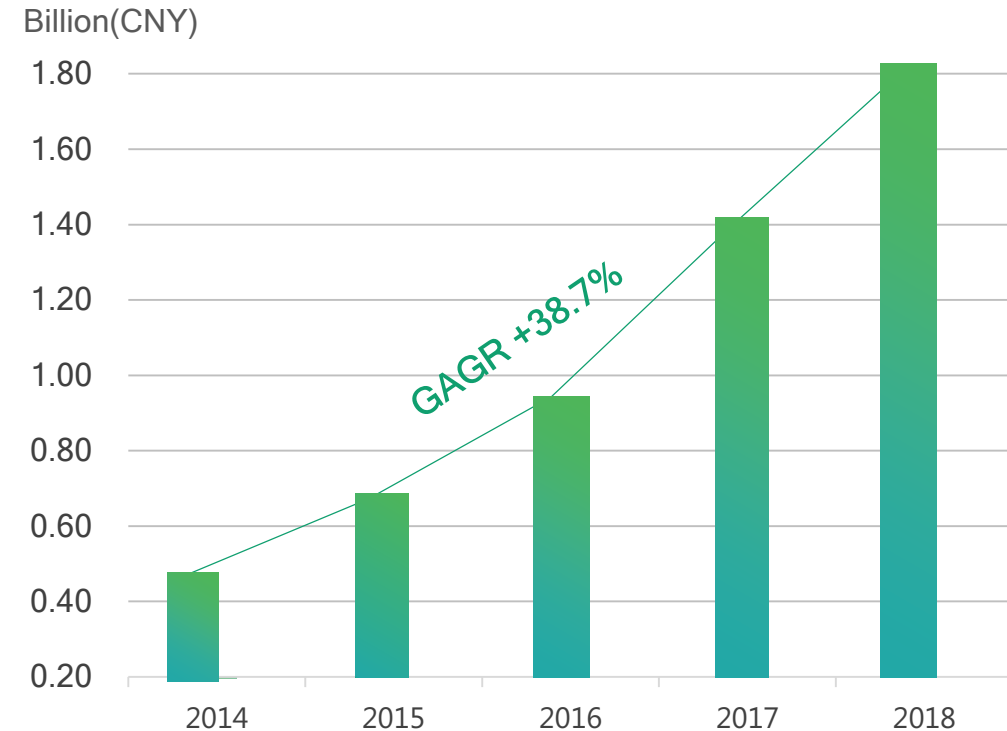
NO.1 MARKET SHARE



Market share by SIP Desktop Phone Unit Shipment, Global 2018

Source: Frost & Sullivan

PERFORMANCE



- Stable Profitability
- Significant Growth
- High Operational Efficiency
- Healthy Cash Flow

GAGR : DOUBLE-DIGIT Average Annual Revenue Growth Rate

Source: Company Financial Report, Jun 2019

Global Partner Network(Portion)

110+

Channels & Distributors

110+

Carrier & ITSP

80+

Technology Partner

Telco Partners

8x8



RingCentral®

Telstra



Vonage

verizon✓

Platform Partners

3CX



metaswitch



centile



SWYX



More details of partners, pls visit: <https://www.yealink.com/partner.html>

World-class Research & Development Environment



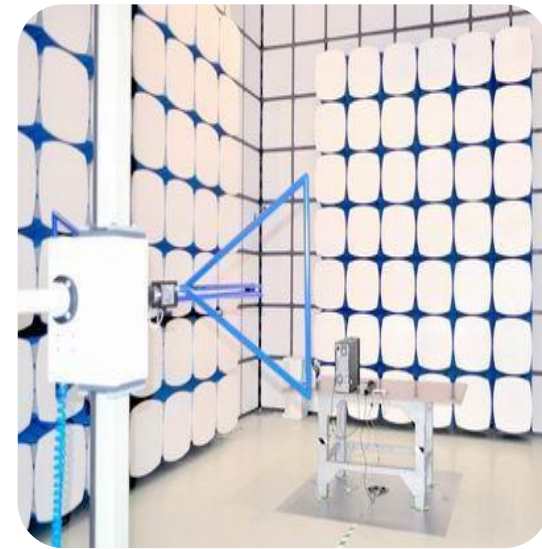
R&D Building

- 3 R&D Center in Xiamen, Hangzhou, Shenzhen



Audio Lab

- More than **150** core technology patents



EMC Lab

- Higher quality standards with **Reject Ratio** **<0.3%**(Industrial standard)

Why Yealink—Broad IP Phone Portfolio

Yealink

Desktop IP Phones Video and Voice Communication



T5 Series
Business IP Phone



T4 Series
Ultra-elegant Business IP Phone



T2 Series
Basic Level Business IP Phone

Conference Phones Easy HD Audio Conferencing



CP960-CPW90
Medium-to large-sized meetings



CP920-CPN10
Small- to medium-sized meetings



CP930W-BASE
Wireless meeting environments

DECT IP Phones Wireless HD communication



DECT IP Multi-Cell System



Portable DECT Handset



Wireless DECT Conference Phone

One Stop Voice Solution—Desktop Phones

Yealink

Team Collaboration

Easy remote conferencing

CP960-WM CP930W CP920



Executive

Easy Collaboration in front your desk

T58A with camera

VP59



General Office

Superb HD call quality
best in class GUI design

T5W Series



Common Areas

Meet basic communication needs

T5 Series



Front Desk

Professional reception service

T58A with camera

T57W



One Stop Voice Solutions—DECT Phones

Yealink

Wireless Conference

Bring mobility for conferences

CP930W



Desk Deck Phone

Enhance communication at the desk

W41P



On-the-go Business

Easy wireless communication

W60P



W53P



DECT IP Multi-Cell System
Offer Roaming & Handover



Authorized Car Dealership



Large Retail



Hotel



Warehouse

Yealink 亿联网络

A background image of a modern office with large windows. In the foreground, a woman is seated at a desk, talking on a Yealink IP phone that has a small screen displaying a video call. To her left, a man is also seated at a desk, looking towards her. In the background, another woman is standing and smiling, and a man is seated at a desk, talking on a mobile phone. Several other Yealink IP phones are visible on the desks. The entire image is overlaid with a semi-transparent green filter.

02. YEALINK IP PHONE PORTFOLIO



Yealink T5 Business Phone Series

Redefining Next-Gen Personal Collaboration Experience

Flagship Smart Video Phone



VP59

Smart Business Phone



T58A



T58A with Camera

Prime Business Phone



T53



T53W



T54W



T57W



Connect with T53W
EXP50 display is automatically adjusted to BnW style



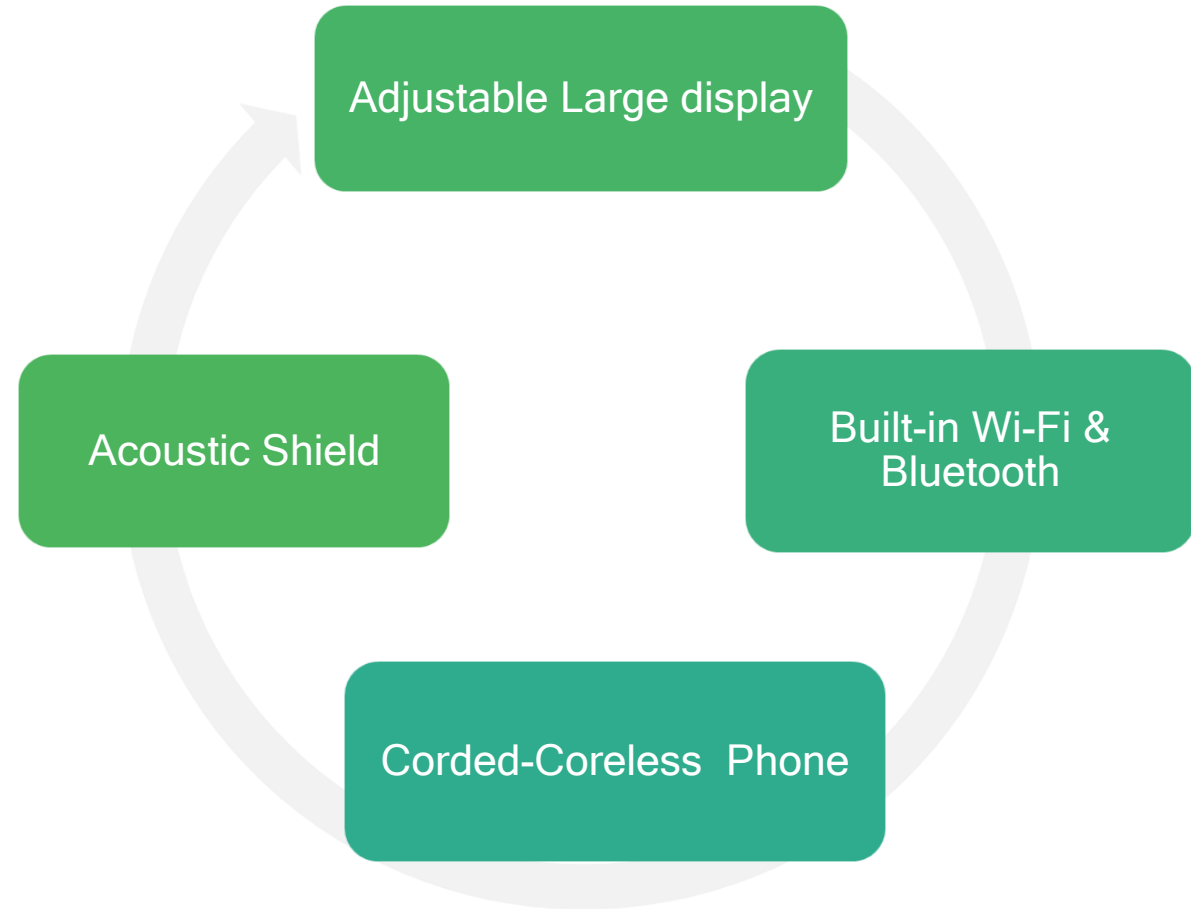
Connect with T54W/T57W/T58A with camera
EXP50 remains the original color-screen style

Product Position of T4S & New T5 Series

- The T4S stay the same as the basic phone in the market
- The T5W series position as an upgrade of T4S series
- The Price: T5W is less than 10% upper T4 series



4 Key Features





VS



Huge time cost for the complex operation of table or chair's height adjustment times in a day to find a comfortable view with the light or sunlight changed

Bring more convenient and protect your eyes. Adjustable from **40 to 90-degree** easily and readily, fully enabled to meet various lighting conditions and personal viewing angles



VS



- Require IP phone extra port for Dongle;
- Require extra cost for Wi-Fi/Bluetooth Dongle;
- Easy lose or miss the dongle;

- Low cost, save a USB port, no extra accessories
- More stable and reliable than Wi-Fi Dongle
- No worry about dongle lost or missed

Note :T53 not built Wi-Fi/Bluetooth

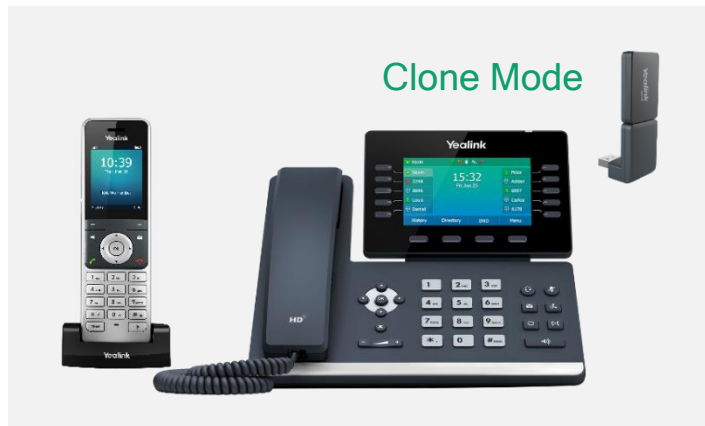
The Yealink Corded-Cordless Phone, a multi-line desktop phone, offers retail store, warehouse, and home offices an all-in-one DECT solution;

- Easy deployment by connecting a DD10K on the phone through USB port only
- Cost-saving than buy a DECT base and network cable deployment to keep a tidy office
- More flexibility with no fixed to the desk and no worries about missing vital calls
- Connect up to **4 Yealink DECT handsets**, up to 4 parallel calls; (Up to 8 handsets in future)



Clone Mode (T5W is Master and the handset is Slave) : Support seamless call switchover between the Desktop phone and the DECT handset (only when one DECT handset is registered)

- Only 1 handset registered on T5W, as a slave handset, T5W acts as the master phone.
- The slave handset share the line and contacts with the master phone.
- The call can be shifted between the master phone and slave handset.



Key Feature--Acoustic Shield

Yealink



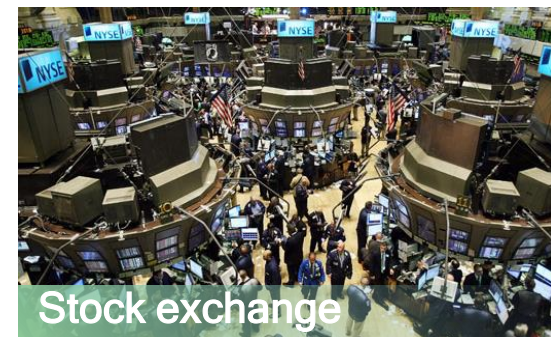
- Uses multiple microphones to create a virtual “shield” between the speaker and the outside sound source.
- Intelligently blocks or mutes sounds from outside the “shield” so that the person on the other end hears you only and follows you clearly.
- Ideal for busy and noisy workspace like call centers, factory
- Dramatically reduces frustration and improves productivity.



Call center





Factory



Stock exchange

| Model | SIP-T53W | SIP-T54W | SIP-T57W |
|--|---|---|---|
| Picture |  |  |  |
| Operating System | Linux Based | Linux Based | Linux Based |
| LCD Screen | 3.7" 360x160 pixels graphical display | 4.3" 480x272 pixels color display | 7" 800x480 pixels color display |
| LCD Type | Adjustable | Adjustable | Adjustable |
| Line Keys | 8 | 10 | 0 |
| Memory Keys | 21 (3 pages of 7 keys) | 27 (3 pages of 9 keys) | 29 touch keys |
| USB Port (2.0 compliant) | 1 | 1 | 1 |
| Ethernet Port | Dual-port Gigabit Ethernet | Dual-port Gigabit Ethernet | Dual-port Gigabit Ethernet |
| Expansion Module | Yealink EXP50 | Yealink EXP50 | Yealink EXP50 |
| External Yealink AC Adapter (optional) | AC 100~240V input and DC 5V/2A output | AC 100~240V input and DC 5V/2A output | AC 100~240V input and DC 5V/2A output |
| Wideband Codec | G.722,Opus | G.722,Opus | G.722,Opus |
| Narrowband Codecs | G.711(A/μ), G.729A/B, G.726, G.723.1, iLBC | G.711(A/μ), G.729A/B, G.726, G.723.1, iLBC | G.711(A/μ), G.729A/B, G.726, G.723.1, iLBC |
| HAC Handset | √ | √ | √ |
| Acoustic Shield | √ | √ | √ |
| PoE | √ | √ | √ |
| Bluetooth | Built-in Bluetooth 4.2 | Built-in Bluetooth 4.2 | Built-in Bluetooth 4.2 |
| Wi-Fi | Built-in (2.4G and 5G) | Built-in (2.4G and 5G) | Built-in (2.4G and 5G) |
| Foot Stand | 1 adjustable angle | 1 adjustable angle | 1 adjustable angle |
| Wall Mountable | √ | √ | √ |
| Corded-Cordless Phone(via DD10K) | √ | √ | √ |
| Content Sharing | √ | √ | √ |
| SIP Accounts | 12 | 16 | 16 |
| 3-way Audio Conferencing | √ | √ | √ |

| Model | T58A with Camera | VP59 |
|--|--|---|
| Picture |  |  |
| Operating System | Android 5.1 | Android 7.1 |
| LCD Screen | 7" 1024X600 Capacitive Touch Screen | 8" 1280 x 800 Capacitive Touch Screen |
| LCD Type | Adjustable | Adjustable |
| Line Keys | 0 | 0 |
| Memory Keys | 27 Touch Keys | 27 Touch Keys |
| USB Port (2.0 compliant) | 2 | 2 |
| Ethernet Port | Dual-port Gigabit Ethernet | Dual-port Gigabit Ethernet |
| Expansion Module | Yealink EXP50 | x |
| External Yealink AC Adapter (optional) | AC 100~240V Input and DC 5V/2A Output | AC 100~240V Input and DC 12V/1A Output |
| Wideband Codec | G.722, Opus | G.722, Opus |
| Narrowband Codecs | G.711(A/μ), G.729A/B, G.726, G.723.1, iLBC | G.711(A/μ), G.729A/B, G.726, G.723.1, iLBC |
| HAC Handset | √ | √ |
| Acoustic Shield | √ | √ |
| PoE | √ | √ |
| Bluetooth | Built-in | Built-in |
| Wi-Fi | Built-in | Built-in |
| Foot Stand | 1 Adjustable Angle | 1 Adjustable Angle |
| Wall Mountable | √ | x |
| Corded-Cordless Phone(via DD10K) | √ | √ |
| Content Sharing | √ | √ |
| SIP Accounts | 16 | 16 |
| 3-way Audio Conferencing | √ | √ |



Yealink Audio Conference Phone Series

Easy Conferencing, Clear Communication



CP920 Small-to-Mid-Sized Meetings

- 3.1-inch graphical LCD with backlight
- Touchable Keypad
- Support analog PSTN calls via CPN10 (up to 3 party PSTN)



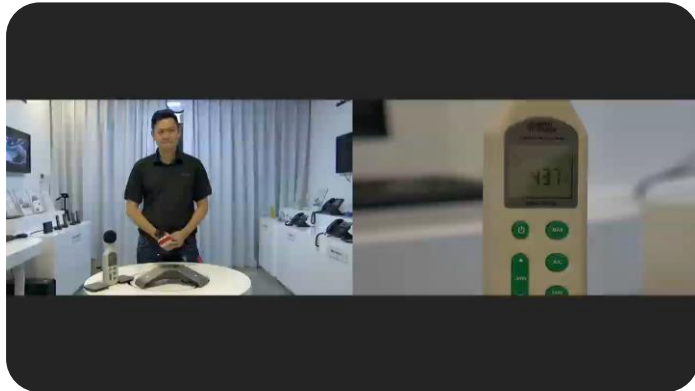
CP960-Wireless Mic Mid-to-Large-Sized Meetings

- 5" color touch screen & Android base
- Support Yealink CPW90 Wireless
- Support for Star Connection with up to 3 CP960 models



CP930W-BASE DECT Conference Phone Small-to-Mid-Sized Meetings

- **Wireless CAT-iq2.0 DECT Technology**
- Rechargeable battery for up to 24 hours of talk time, 4 hours of charging time
- No network or power outlet is required

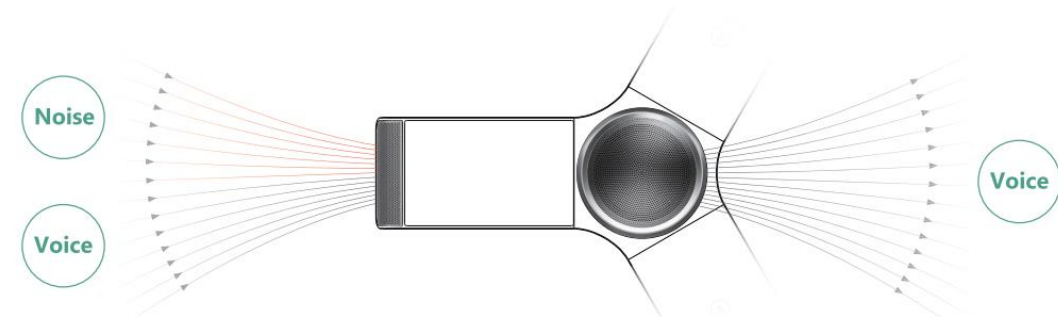


Yealink Patented Smart Noise Proof Technology

- Auto suppression of nonhuman sounds around the speaker (e.g. sounds of keyboards or knocks)
- Auto proof nonhuman sounds from un-speaking sides during multi-sites meetings to keep the conference in order

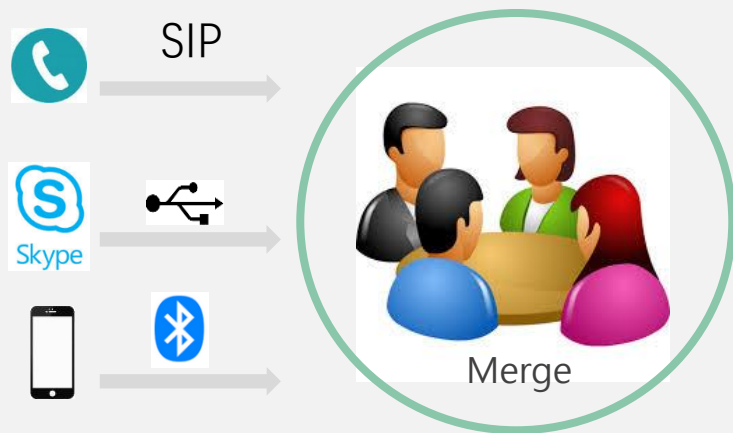
Audio Application Technology

- Resist up to 80% audio packet loss
- Brand-new Beamforming microphone array



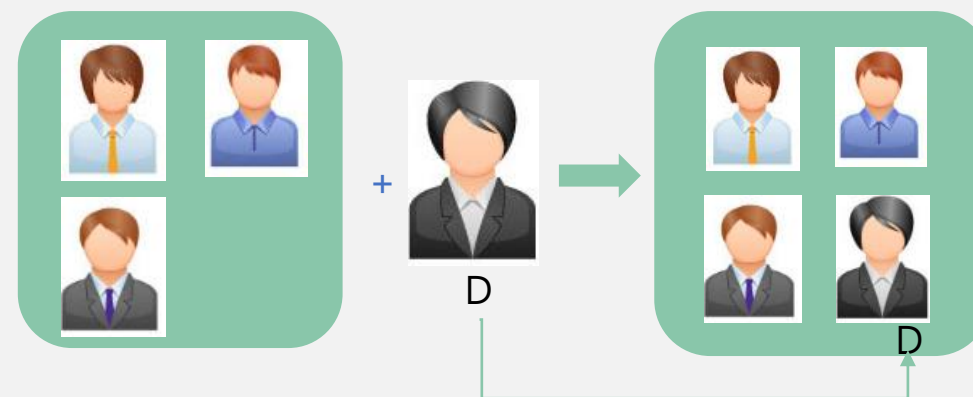
- 20-foot (6 meters) voice pickup range, 360-degree full coverage with built-in 3-microphone
- Extend the voice pickup range from 6 meters to more than 20 meters with Yealink CPW90-CP960 only





Hybrid UC meeting

Merge all communication from different terminals (Smartphone/PC/tablet/CP) together into one meeting



A,B,C are in a meeting

D join the meeting seamlessly

Join a meeting seamlessly

Invite or allow someone to join the ongoing meeting seamlessly without interruption.

- Recognize the speaker during meeting easily and connect to external loudspeaker (CP960 only)
- The CP920 and CP930W offer a sensitive touch keypad with main conferencing function keys
- Three one-touch mute buttons with LED indicators allow mute and unmute switching easily

Key Feature—Broad Interoperability (Portion)

Yealink

Customers can benefit from the seamless integration, which guarantees both performance and functionality.

- Standard SIP protocol, connect to most leading IP platforms
- Certified MSFT Teams with consistent user interface



| Model | CP960 | CP920 | CP930W |
|-----------------------------|--|---|---|
| Picture |  |  |  |
| Applications | Mid-Large meetings, up to 20 people | Small-mid meetings, up to 15 people | Small-mid meetings, wireless meeting environment with up to 15 people |
| Operating System | Android | Linux | RTK-E |
| LCD | 5" 720 x 1280-pixel capacitive touch screen | 3.1" 248 x 120-pixel graphical LCD | 3.1" 248 x 120-pixel graphical LCD |
| Touch keypad | x | √ | √ |
| USB Port (2.0 compliant) | 2 | 1 | 0 |
| USB 2.0 Micro-B Device Port | 1 | 0 | 1 (Connect to PC) |
| Ethernet Port | 10/100Mbps | 10/100Mbps | 0 |
| Wireless MIC | 2 (Optional) | 0 | 0 |
| 3.5 mm Jack | 1 | x | x |
| Built-in PoE/Wi-Fi | √ | √ | x |
| Battery | x | x | Li-ion, 3.6V 7800mAh |
| Talk time/Standby time | x | x | 24h/360h |
| Create meeting directly | √ | x | x |
| Yealink Active Speaker | √ | x | x |
| PSTN | x | √ (Via Yealink CPN10) | x |
| Star Connection | √ | x | x |



320g



CP900

Good for up to 6 People
Personal use, **huddle rooms** and on-the-go



220g



CP700

Good for 1-3 People
personal use, **private space** and on the go

High quality sound

- HD audio offers a clear and natural sound.
- The omnidirectional microphone and full-duplex allows participants to be heard and involved in the meeting.
- Yealink's distraction-free HD audio technology includes AEC, NS and DSP

CP900 supports:

- Six built-in beam-forming microphones permit 360° directed voice pickup.
- Support Noise Proof Technology

Portable design

lightweight design
Compact & Small
Protective Zipper Bag





Easy of Connection

Able to pair the CP900 & CP700 with 3 devices simultaneously. Calls from two different devices can be merged into one, by connecting the CP through Bluetooth on one device, and with USB-connection on another



Intuitive user interface

- Multiple buttons with LED indicators for easy-to-understand guidance
- Deep integration with Microsoft Teams includes a dedicated Teams button

| Model | USB Speakerphone C900 | USB Speakerphone C700 |
|---------------------------------------|--|--|
| Picture |  |  |
| Dimension | (Ø) 132.5 x (h) 35.5mm | (Ø) 120 x (h) 28mm |
| Weight | 320 g / 11.28 oz | 220 g / 7.76 oz |
| Connectivity | USB 2.0 & Bluetooth 4.0 | USB 2.0 & Bluetooth 4.0 |
| USB Cable Length | 3 feet / 0.9 meter | 2.6 feet / 0.8 meter |
| Touch Buttons | Power,Bluetooth,Call answer,Call hangup,Volume up,Volume down,Mute,Voice assistant/Teams | Power,Bluetooth,Call answer,Call hangup,Volume up,Volume down,Mute,Voice assistant/Teams |
| Bracket | X | √ |
| Wireless Range | 100 feet / 30 meters | 100 feet / 30 meters |
| PC USB Bluetooth dongle(Yealink BT50) | USB BT audio device/HID dongle. Bluetooth 5.0 | USB BT audio device/HID dongle. Bluetooth 5.0 |
| Battery | Lithium Polymer | Lithium Polymer |
| Battery capacity | 2450mAh | 1420mAh |
| Max. charge current | 1.7A | 1.4A |
| Charging power & time | 5V / 1A, Charging time 3 hours | 5V / 500mA, Charging time 3 hours |
| Talk time | 12 Hours | 9 Hours |
| Standby time | Standby 450 days, Power safe after 30min | Standby 360 days, Power safe after 30min |
| Wideband Audio/HD Voice | √ | √ |
| Audio duplex | √ | √ |
| Noise suppression (NS) | √ | √ |
| Digital Signal Processing (DSP) | √ | √ |
| Acoustic echo cancellation (AEC) | √ | √ |

Yealink DECT IP Phone Series

Bring Scalability to Cordless Communications



Single DECT Solution



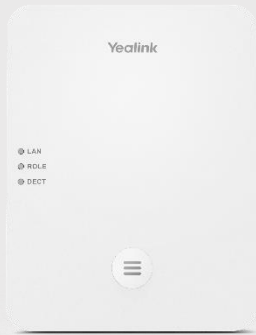
Multi-Cell system solution

Yealink W60B DECT Base

- Support up to 8 handsets, 8 SIP accounts and 8 concurrent calls
- Compatible with entire Yealink DECT handsets (T41S+DD10K, W53H, W56H, CP930W)
- Yealink RT30 DECT repeater to guarantee the signal and the connectivity



| Model | W60P | W53P | W41P | CP930W-Base |
|----------------------------|---|---|---|---|
| Picture |  |  |  |  |
| Applications | Premium level, Busy call traffic | Mid level, Moderate call traffic | Personal desk | Wireless conference room |
| LCD Display | 2.4" 240 x 320 TFT color display | 1.8" 128 x 160 TFT color display | 2.7" 192 x 64 graphical LCD | 3.1" 248 x 120 graphical LCD |
| Handset size | 175mm x 53mm x 20.3mm | 150mm x 48.4mm x 25mm | 212mm*189mm*175mm*54mm | 307.8mm*298.5mm*66.9mm |
| LCD Backlight | √ | √ | √ | √ |
| Standby Time | 400h | 200h | x | 360h |
| Talk Time | 30h | 18h | x | 24h |
| Battery | Lithium | Lithium | x | Lithium |
| Quick Charge | √ | √ | - | √ |
| Headset | 3.5 mm | 3.5 mm | RJ9/EHS | x |
| Indoor Range/Outdoor Range | 50m/300m | 50m/300m | 50m/300m | 50m/300m |
| Handset Number Per Base | Up to 8 handsets | Up to 8 handsets | Up to 8 handsets | Up to 8 handsets |
| SIP Accounts | 8 | 8 | 8 | 8 |
| Simultaneous Voice Call | 8 | 8 | 8 | 8 |
| Repeater | √ | √ | √ | √ |
| DECT Standard | CAT-iq 2.0 | CAT-iq 2.0 | CAT-iq 2.0 | CAT-iq 2.0 |
| Audio Conference | 3-way | 3-way | 3-way | 5-way |
| Speed Dial | √ | √ | √ | x |
| Wideband Codec | Opus, AMR-WB (Optional), G.722 | Opus, AMR-WB (Optional), G.722 | Opus, AMR-WB (Optional), G.722 | Opus, AMR-WB (Optional), G.722 |
| Narrowband Codec | PCMU, PCMA, G.726, G.729, iLBC | PCMU, PCMA, G.726, G.729, iLBC | PCMU, PCMA, G.726, G.729, iLBC | PCMU, PCMA, G.726, G.729, iLBC |
| Ethernet Interface | 10/100M | 10/100M | 10/100M | 10/100M |
| PoE | √ | √ | √ | √ |
| Bluetooth | x | x | x | √ |
| Wall Mountable Base | √ | √ | √ | √ |



Yealink W80 DECT IP Multi-Cell System consists of the DECT Manager **W80DM** and base station **W80B**

- Up to 30 base stations
- Up to 100 parallel calls
- Up to 100 handsets
- Up to 100 SIP accounts

Suitable for needs:

Handover | Wider DECT signal coverage

More handsets and simultaneous calls



Office



Warehouse

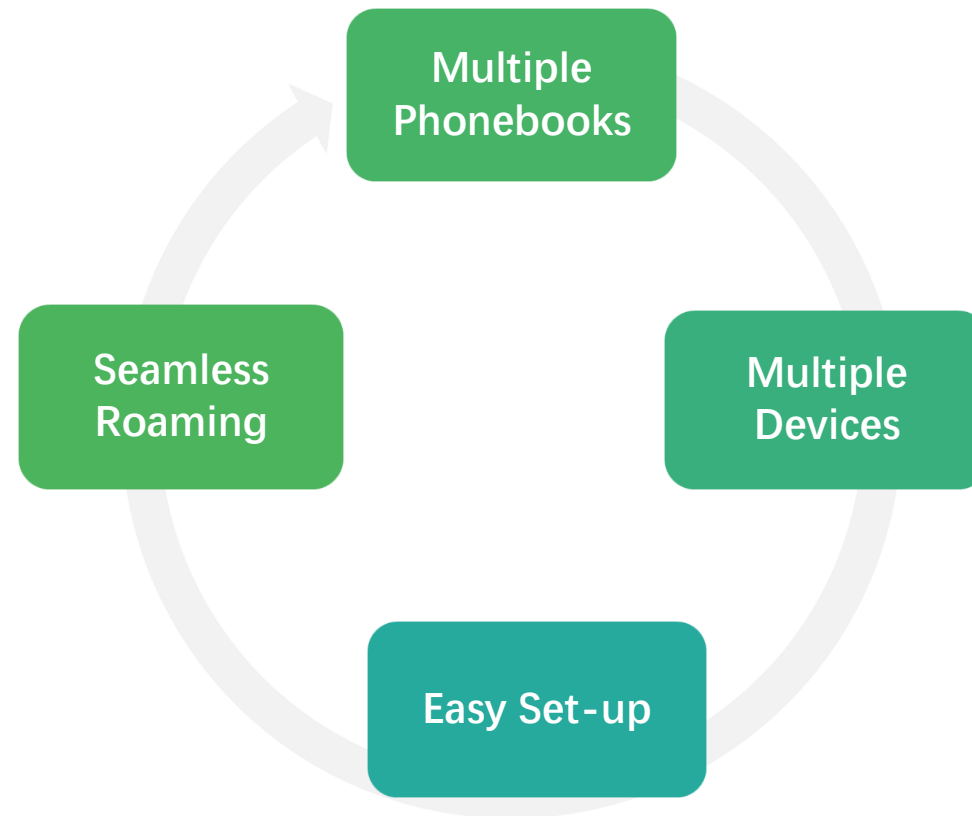


Market/Shop



Hotel

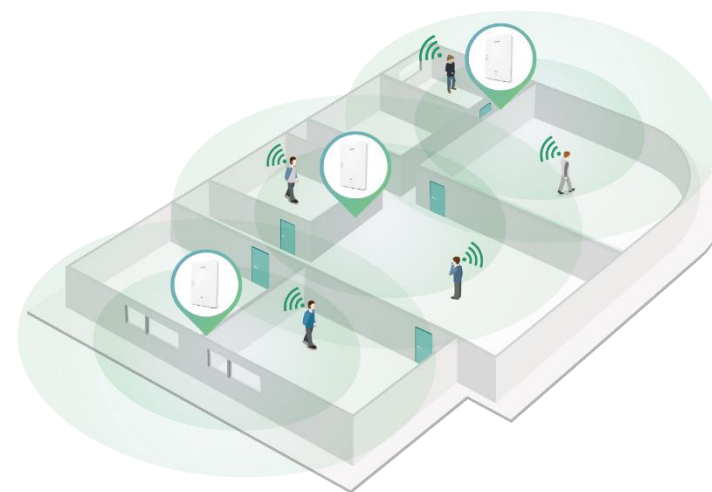
4 Key Features





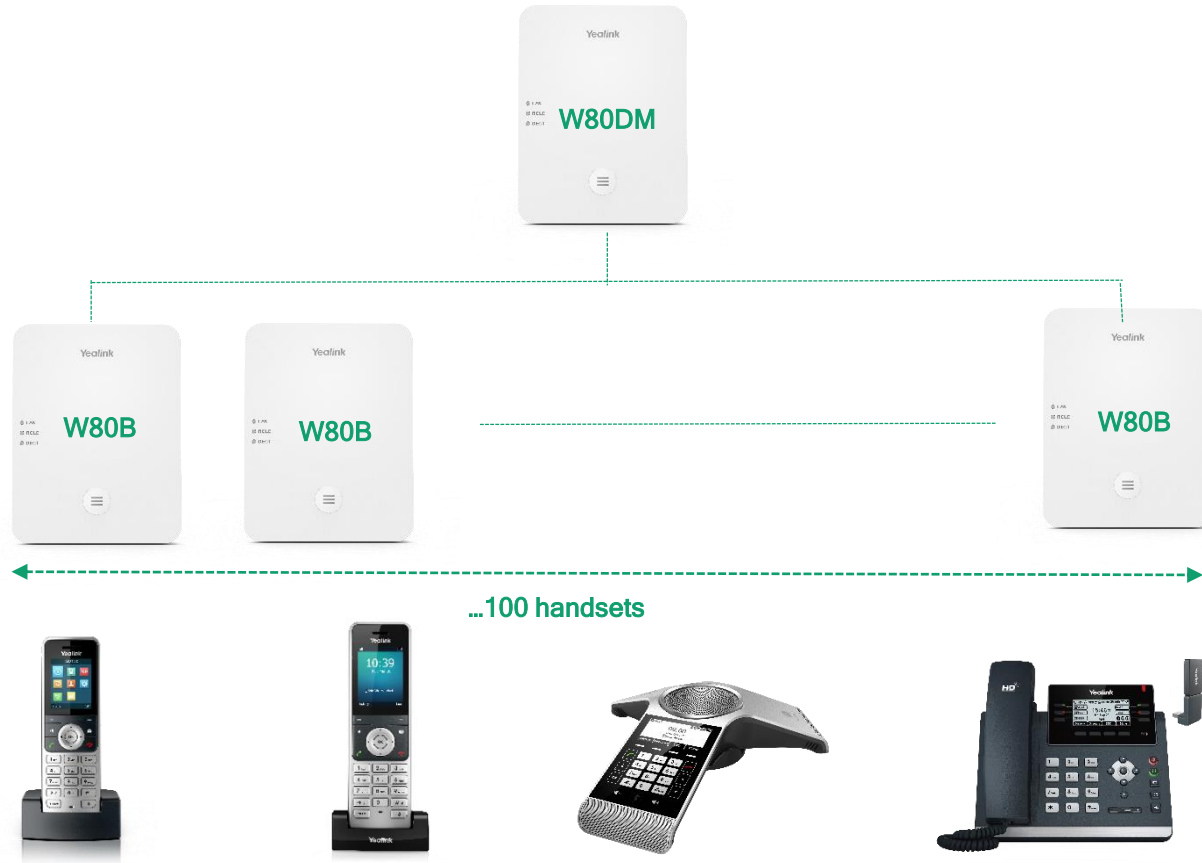
Easy Setup, Fast Deployment

Confirm bases locations easily with Yealink DECT IP Multi-Cell Deployment Toolkit



Seamless Roaming & Stability

Up to 30 base stations and 100 handsets



Multiple Devices

Up to 30 W80B base stations

Up to 100 multiple terminal devices with 100 parallel calls
(W53H, W56H, CP930W, and DD Phone (T41S+DD10K))



Easy Access to Multiple Phone Books

Including Local Directory, Remote Phonebook, LDAP, and XML Phonebook

The background of the slide is a photograph of an office interior, featuring a desk with a laptop, a chair, and a window with blinds. The entire image is covered with a semi-transparent teal overlay. Centered on this background is the section header in white text.

03. YEALINK ACCESSOIRES & SERVICE

EXP20

Support T27G/T29G



- 160x320pixel graphical LCD
- 20 physical, dual-color LED keys
- Two accessible pages

EXP40

Support T46S/T48S/T4G



- 160x320-pixel graphical LCD
- 20 physical keys with dual-color LED
- 2 control keys for fast switching pages
- Wall-mountable

EXP50

Support T53/T54W/
T57W/T58



- 4.3" 272x480-pixel color screen
- 20 physical keys with dual-color LED
- 3 control keys with LED for fast switching pages
- Support up to 3 daisy-chained modules

YHS33

Support T2S/T4S



- Wideband & Premium audio
- Ultra microphone noise cancelling
- 330-degree pivoting microphone boom
- Featherweight soft ear cushions

YHS33-USB

Support T4S



- Wideband audio
- Ultra microphone noise cancelling
- USB port and 3.5mm jack for devices
- Integrated LED indicator and warning tone

CAM50

Support T58A/
T58A with camera



- 2 mega-pixel HD camera with privacy shutter
- 720p@30fps

EHS36

Support T27G/T29G
T40P/T40G/T4S

- Compatible with Jabra, Plantronics and Sennheiser
- Plug and play, easy to use



WF40

Support T27G/
T29G/T4S

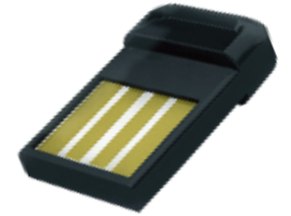
- High transmission rate, reliable connection
- Compliant with IEEE802.11b/g/n
- Low power consumption



BT40

Support T27G/
T29G/T4S

- Support for up to 10 meters of range
- Compatible with v4.0+HS system
- Wideband audio support



EHS40

Support
T58A/T5W/T4S
(version 83 or later)

- Compatible with Jabra, Plantronics, Sennheiser
- Answer calls through remote wireless headset
- Terminate calls using remote wireless headset key
- Incoming calls signaled in the headset earpiece



WF50

Support T27G/T4S
(Version 84)

- Dual-band connectivity
- High transmission rate
- Interference free, reliable connection



BT41

Support
T27G/T29G/T4S/T5
3

- Answer/Terminate calls through wireless headset
- 10m Range



RT30

Support W60B



- Compatible with DECT CAT-iq 2.0
- Support Yealink W60B DECT base station
- Up to 6 repeaters per base station
- Wall mountable

W60B

Support CP930W/
W60P/W53P



- Up to 8 DECT handsets/8 VoIP accounts
- Allow up to 8 HD concurrent calls
- TLS and SRTP security encryption
- Built-in Noise Reduction System

CPN10

Support CP920



- Easy to use
- No additional power needed
- USB call recording
- Up to 2 cascaded CPN10 to setup PST conference

DD10K

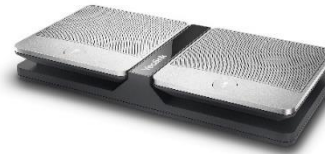
Support T41S/42S/T5W



- Reliable Connection
- Ease-of-use
- Plug and Play
- High Transmission Rate

CPW90

Support CP960



- DECT & Full duplex technology
- 10-foot (3-meter) 360° voice pickup
- Capacitive mute touchpad
- Echo cancellation

YDMP



YEALINK DEVICE MANAGEMENT PLATFORM

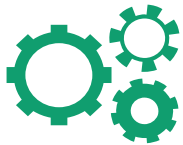
<http://support.yealink.com/documentFront/forwardToDocumentDetailPage?documentId=243>

YMCS



YEALINK MANAGEMENT CLOUD SERVICE

<http://support.yealink.com/documentFront/forwardToDocumentDetailPage?documentId=255>



Device
Management



Service
Analysis



Customized
Group



Graphical



Remote
Diagnose



Multiple
Administrators



Timer Task



Batch
Deployment

- Remote diagnostics and remote reset/reboot
- Timer tasks with rules
- Graphical QoE and alarm management
- Easy deployment and remote management
- API for deep integration with PBX
- Cloud servers are distributed in the United States and Europe with more than 6 security measures

Opportunity registration program

Please visit below link to check details on opportunity registration program

https://www.yealink.com/sip_opportunity_registration_pogram

Thanks!