

Yealink CP960 Skype for Business Edition Release Notes of Version 8

Table of Contents

Yealink CP960 Skype for Business Edition Release Notes of Version 8	1
Yealink CP960 Skype for Business Edition Release Notes of Version 73.8.0.38	3
1. Introduction	3
2. New Features	3
3. Optimization	3
4. Bug Fixes	3
5. New Features Descriptions	3
Yealink CP960 Skype for Business Edition Release Notes of Version 73.8.0.37	5
1. Introduction	5
2. New Features	5
3. Optimization	5
4. Bug Fixes	5
Yealink CP960 Skype for Business Edition Release Notes of Version 73.8.0.35	6
1. Introduction	6
2. New Features	6
3. Optimization	6
4. Bug Fixes	6
5. New Features Descriptions	6
6. Optimization Descriptions.....	7
7. Configuration Parameters Enhancements.....	7
Yealink CP960 Skype for Business Edition Release Notes of Version 73.8.0.34	13
1. Introduction	13
2. New Features	13
3. Optimization	13
4. Bug Fixes	13
5. New Features Descriptions	13
Yealink CP960 Skype for Business Edition Release Notes of Version 73.8.0.27	16
1. Introduction	16
2. New Features	16
3. Optimization	16
4. Bug Fixes	16
5. New Features Descriptions	16
6. Configuration Parameters Enhancements.....	20
7. Default Value Setting Changes	29

Yealink CP960 Skype for Business Edition Release

Notes of Version 73.8.0.38

1. Introduction

- Firmware Version:
CP960: 73.8.0.37 upgrades to 73.8.0.38
- Applicable Models: CP960
- Release Date: Sep 16th, 2020.

2. New Features

1. Added the feature of Star Connection.
2. Added the feature of Proxy Server.

3. Optimization

1. Upgraded the phone system to Android 7.1:
Description: After you upgrade your Yealink SfB phone to this firmware version, the phone will run on Android 7.1.
Caution: Do not downgrade your Yealink SfB phone from current firmware with Android 7.1 OS to the previous firmware with Android 5.1 OS.
Please contact our technical support team for help if it is necessary for you to downgrade, otherwise, you might run into some troubles.

4. Bug Fixes

None

5. New Features Descriptions

1. **Added the feature of Star Connection.**
Description: You can deploy up to four CP960 SfB phones in a star layout in a large meeting room, one as the master phone and others as the slave phones. The master phone keeps all features, while the slave phones only sync some key features of the master phone. After connecting, the slave phones are mainly used to work as speakers or microphones.

The parameters in the auto provision template are described as follows:

features.cp_star_connection.master.enable =

features.cp_star_connection.slave.x.mac =

features.cp_star_connection.master.mac =

2. Added the feature of Proxy Server.

Description: You can configure your network to use proxy servers.

The parameters in the auto provision template are described as follows:

network.proxy.mode =

network.proxy.wpad =

network.proxy_pac.url =

network.proxy.address =

network.proxy.port =

network.proxy.username =

network.proxy.password =

Yealink CP960 Skype for Business Edition Release

Notes of Version 73.8.0.37

1. Introduction

- Firmware Version:
CP960: 73.8.0.35 upgrades to 73.8.0.37
- Applicable Models: CP960
- Release Date: Feb 27th, 2020.

2. New Features

None

3. Optimization

None

4. Bug Fixes

1. Fixed an issue that the date of the scheduled meeting may be displayed incorrectly.

Yealink CP960 Skype for Business Edition Release

Notes of Version 73.8.0.35

1. Introduction

- Firmware Version:
CP960: 73.8.0.34 upgrades to 73.8.0.35
- Applicable Models: CP960
- Release Date: Jun 15th, 2019.

2. New Features

1. Added the feature of Wi-Fi.

3. Optimization

1. Optimized the Skype for Business Feature License.

4. Bug Fixes

None

5. New Features Descriptions

1. **Added the feature of Wi-Fi.**

Description: Wi-Fi feature enables users to connect their phones to the organization's wireless network. The wireless network is more convenient and cost-effective than wired network.

When the Wi-Fi feature is enabled, the phone will automatically scan the available wireless networks. All the available wireless networks will display in scanning list on the touch screen. You can store up to 5 frequently-used wireless networks on your phone and specify the priority for them.

The parameters in the auto provision template are described as follows:

static.wifi.function.enable =

static.wifi.enable =

static.wifi.X.label =

static.wifi.X.ssid =

static.wifi.X.priority =
static.wifi.X.security_mode =
static.wifi.X.cipher_type =
static.wifi.X.password =
static.wifi.X.eap_type =
static.wifi.X.eap_user_name =
static.wifi.X.eap_password =

6. Optimization Descriptions

1. Optimized the Skype for Business Feature License.

Description: By default, the phone has a built-in Skype for Business feature license, which allows user to use Yealink phones with Skype for Business features directly.

Any Open SIP build upgrades to Skype for Business build will be required to apply and import the license.

Any Skype for Business will not be allowed to downgrade to the Open SIP from this release. If Skype for Business phones are under temporary license (for demo testing purpose) and want to get back to Open SIP, please contact Yealink support team for technical support for a unlock license.

Once upgraded to the latest Skype for Business, it will not be allowed to downgrade to the previous Skype for Business version.

7. Configuration Parameters Enhancements

Auto Provision Template Flies Change Log							
Firmware Version: [73.8.0.34]-[73.8.0.35]							
Feature	Provisioning syntax Comparison		Permitted Values	Default Value	Action	Description	File
	73.8.0.34	73.8.0.35					
Wi-Fi		static.wifi.function.enable =	0 or 1	1	Add	Enables or disables the Wi-Fi feature. 0-Disabled 1-Enabled Note: It is only applicable to CP960/T58A/T56A/T55A Skype for Business phones. If you change this parameter, the phone will reboot to make the change take effect.	common.cfg
Wi-Fi		static.wifi.ena	0 or 1	0	Add	Activates or deactivates the	common.

		ble =				<p>Wi-Fi mode.</p> <p>0-Disabled</p> <p>1-Enabled</p> <p>Note: It is only applicable to CP960/T58A/T56A/T55A/T48S Skype for Business phones. For CP960/T58A/T56A/T55A Skype for Business phones, it works only if the value of the parameter "static.wifi.function.enable" is set to 1 (Enabled).</p>	cfg
Wi-Fi		static.wifi.X.label = (X ranges from 1 to 5)	String within 32 characters	Blank	Add	<p>Configures the profile name of the wireless network X for the phone.</p> <p>Note: For T48S Skype for Business phones, it works only if the value of the parameter "static.wifi.enable" is set to 1 (Enabled). For CP960/T58A/T56A/T55A Skype for Business phones, it is only works only if the value of the parameter "static.wifi.function.enable" and the value of the parameter "static.wifi.enable" are set to 1 (Enabled).</p>	common. cfg
Wi-Fi		static.wifi.X.ssid = (X ranges from 1 to 5)	String within 32 characters	Blank	Add	<p>Configures the Service Set Identifier (SSID) of the wireless network X.</p> <p>SSID is a unique identifier for accessing wireless access points.</p> <p>Note: For T48S Skype for Business phones, it works only if the value of the parameter "static.wifi.enable" is set to 1 (Enabled). For CP960/T58A/T56A/T55A Skype for Business phones, it is only works only if the value</p>	common. cfg

						of the parameter “static.wifi.function.enable” and the value of the parameter “static.wifi.enable” are set to 1 (Enabled).	
Wi-Fi		static.wifi.X.priority = (X ranges from 1 to 5)	Integer from 1 to 5	1	Add	Configures the priority for the wireless network X for the IP phone. 5 is the highest priority, 1 is the lowest priority. Note: For T48S Skype for Business phones, it works only if the value of the parameter “static.wifi.enable” is set to 1 (Enabled). For CP960/T58A/T56A/T55A Skype for Business phones, it is only works only if the value of the parameter “static.wifi.function.enable” and the value of the parameter “static.wifi.enable” are set to 1 (Enabled).	common. cfg
Wi-Fi		static.wifi.X.security_mode = (X ranges from 1 to 5)	For T48S Skype for Business phone: NONE, WEP, WPA-PSK or WPA2-PSK, WPA-EAP or WPA2-EAP For CP960/T58A/T56A/T55A Skype for Business phone: NONE, WEP, WPA/WPA2 PSK or 802.1x EAP	NONE	Add	Configures the security mode of the wireless network X. Note: For T48S Skype for Business phones, it works only if the value of the parameter “static.wifi.enable” is set to 1 (Enabled). For CP960/T58A/T56A/T55A Skype for Business phones, it is only works only if the value of the parameter “static.wifi.function.enable” and the value of the parameter “static.wifi.enable” are set to 1 (Enabled).	common. cfg
Wi-Fi		static.wifi.X.ci	NONE, WEP,	NONE	Add	Configures the encryption type	common.

		pher_type = (X ranges from 1 to 5)	TKIP, AES or TKIP AES			<p>of the wireless network X.</p> <p>If the value of the parameter “static.wifi.X.security_mode” is set to NONE, the permitted value of this parameter is NONE.</p> <p>If the value of the parameter “static.wifi.X.security_mode” is set to WEP, the permitted value of this parameter is WEP.</p> <p>If the value of the parameter “static.wifi.X.security_mode” is set to other values, the permitted values of this parameter are TKIP, AES or TKIP AES.</p> <p>Note: For T48S Skype for Business phones, it works only if the value of the parameter “static.wifi.enable” is set to 1 (Enabled). For CP960/T58A/T56A/T55A Skype for Business phones, it is only works only if the value of the parameter “static.wifi.function.enable” and the value of the parameter “static.wifi.enable” are set to 1 (Enabled) are set to 1 (Enabled).</p>	cfg
Wi-Fi		static.wifi.X.p assword = (X ranges from 1 to 5)	String within 64 characters	Blank	Add	<p>Configures the password of the wireless network X.</p> <p>Note: For T48S Skype for Business phones, it works only if the value of the parameter “static.wifi.enable” is set to 1 (Enabled) and “static.wifi.X.security_mode” are set to WEP, WPA-PSK or WPA2-PSK. For CP960/T58A/T56A/T55A Skype for Business phones, it works only if the value of the</p>	common. cfg

						parameter "static.wifi.function.enable" and the value of the parameter "static.wifi.enable" are set to 1 (Enabled) and the value of the parameter "static.wifi.X.security_mode" is set to WEP or WPA/WPA2 PSK.	
Wi-Fi		static.wifi.X.e ap_type = (X ranges from 1 to 5)	For T48S Skype for Business phone: TTLS, PEAP or TLS For T58A/T56A Skype for Business phone: PEAP, TLS, TTLS or PWD	Blank	Add	Configures the EAP authentication mode of the wireless network X. Note: For T48S Skype for Business phones, it works only if the value of the parameter "static.wifi.enable" is set to 1 (Enabled) and "static.wifi.X.security_mode" is set to WPA-EAP or WPA2-EAP. For CP960/T58A/T56A/T55A Skype for Business phones, it works only if the value of the parameter "static.wifi.function.enable" and the value of the parameter "static.wifi.enable" are set to 1 (Enabled) and the value of the parameter "static.wifi.X.security_mode" is set to 802.1x EAP.	common. cfg
Wi-Fi		static.wifi.X.e ap_user_nam e = (X ranges from 1 to 5)	String within 32 characters	Blank	Add	Configures the EAP authentication username of the wireless network X. Note: For T48S Skype for Business phones, it works only if the value of the parameter "static.wifi.enable" is set to 1 (Enabled), "static.wifi.X.security_mode" is set to WPA-EAP or WPA2-EAP and the value of the parameter "static.wifi.X.eap_type" is set to TTLS or PEAP. For	common. cfg

						<p>CP960/T58A/T56A/T55A</p> <p>Skype for Business phones, it works only if the value of the parameter “static.wifi.function.enable” and the value of the parameter “static.wifi.enable” are set to 1 (Enabled) and the value of the parameter “static.wifi.X.security_mode” is set to 802.1x EAP.</p>	
Wi-Fi		<p>static.wifi.X.eap_password = (X ranges from 1 to 5)</p>	<p>String within 64 characters</p>	Blank	Add	<p>Configures the EAP authentication password of the wireless network X.</p> <p>Note: For T48S Skype for Business phones, it works only if the value of the parameter “static.wifi.enable” is set to 1 (Enabled) and “static.wifi.X.security_mode” is set to WPA-EAP or WPA2-EAP. For CP960/T58A/T56A/T55A Skype for Business phones, it works only if the value of the parameter “static.wifi.function.enable” and the value of the parameter “static.wifi.enable” are set to 1 (Enabled), “static.wifi.X.security_mode” is set to 802.1x EAP and the value of the parameter “static.wifi.X.eap_type” is set to PEAP, TTLS or PWD.</p>	<p>common. cfg</p>

Yealink CP960 Skype for Business Edition Release

Notes of Version 73.8.0.34

1. Introduction

- Firmware Version:
CP960: 73.8.0.27 upgrades to 73.8.0.34
- Applicable Models: CP960
- Release Date: May 15th, 2019

2. New Features

1. Bundled the 3rd-party app ID for applying OAuth 2.0 & 3rd-party application with greater security.
2. Added the feature that you can modify the configurations of screen saver via auto provisioning.
3. Added the feature that you can customize the specific hostname of SfB phones via auto provisioning.
4. Added the feature that you can access Status/Features/Basic page without admin password.
5. Added the feature that you can sign into a common area phone without PIN.

3. Optimization

None

4. Bug Fixes

1. Fixed the issue that you may fail to import SfB licenses in bulk via auto provisioning.
2. Fixed the issue that the phone may fail to display the customized language files.
3. Fixed the issue that the information may lose the QoE package on Yealink Device Management Platform.

5. New Features Descriptions

1. **Bundled the 3rd-party app ID for applying OAuth 2.0 & 3rd-party application with greater security.**

Description: Microsoft recently announced that it will enable third-party applications and use OAuth 2.0 to provide users with greater security. This change is confined to 3PIP certified Skype for Business IP phones and requires the update of Microsoft server synchronization for all 3PIP partners. Yealink released new firmware for its complete range of Skype for Business phones in Mid-May, well in advance of the **January 15, 2020** deadline for Microsoft's global service update. In order to ensure that end users can successfully sign in to the phones in question, administrators must complete the following steps before the deadline.

Admins will be asked to consent one time on behalf of the organization to grant the application the necessary permissions.

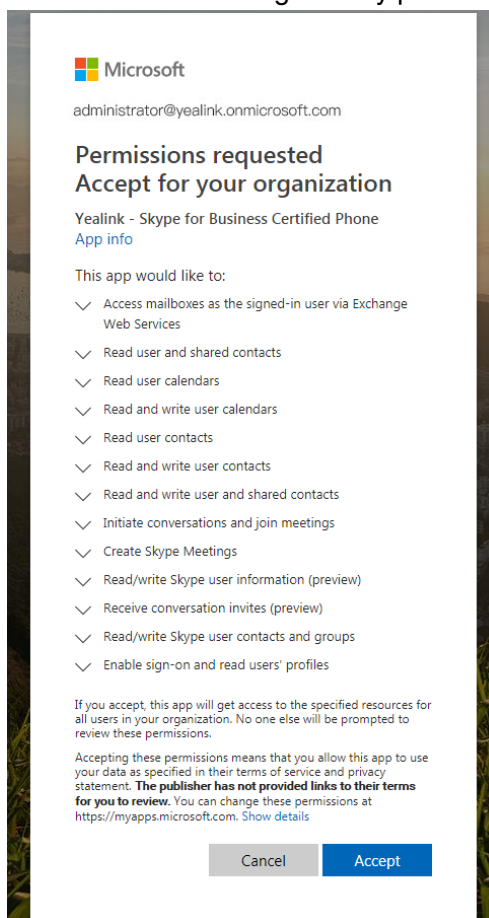
a) URL access:

https://login.microsoftonline.com/common/adminconsent?client_id=f1faadeb-88b3-4852-8138-3b9e23b24619

b) Sign in using the tenant admin account rather than as a user. Please note that only administrator accounts can grant the relevant permissions. Non-administrator account users will be forwarded to the Need Admin Approval Page.

c) When successful, the Device Login Page will recognize the device as a **Yealink – Skype for Business Certified Phone**.

d) Click **Accept** to grant all the required permissions on the below consent screen from Azure. Then, other users in the organization can sign-in according to the typical Web Sign-in and there will be no need to re-grant any permissions.



For more information, refer to <https://techcommunity.microsoft.com/t5/Skype-for->

2. Added the feature that you can modify the configurations of screen saver via auto provisioning.

Description: You can not only modify the configurations of screen saver on the phone directly, but also via website and auto provisioning.

The parameters in the auto provision template are described as follows:

screensaver.type=

screensaver.wait_time=

3. Added the feature that you can customize the specific hostname of SfB phones via auto provisioning.

Description: You can modify the hostname of the devices with MAC addresses, vendor name, version number and device name.

The parameters in the auto provision template are described as follows:

network.dhcp_host_name =

4. Added the feature that you can access Status/Features/Basic page without admin password.

Description: Sometimes the users need to check the IP address of a common area phone but the phone will ask for the credential of admins, now you can remove authentication requirements via auto provisioning.

The parameters in the auto provision template are described as follows:

phone_setting.cap_status_lock.enable =

phone_setting.cap_features_lock.enable=

phone_setting.cap_basic_lock.enable=

5. Added the feature that you can sign into a common area phone without PIN.

Description: If you sign into a common area phone, you will be required to set up an admin password, now you can remove this procedure via auto provisioning.

The parameters in the auto provision template are described as follows:

features.cap_set_pin.enable =

Yealink CP960 Skype for Business Edition Release

Notes of Version 73.8.0.27

1. Introduction

- Firmware Version:
CP960: 73.8.0.17 upgrades to 73.8.0.27
- Applicable Models: CP960
- Release Date: Jul 3rd, 2018.

2. New Features

1. Added the feature of Better Together over Ethernet (BToE).
2. Added the feature of Connecting a PC Using a USB Cable.
3. Added the feature of Placing a Mobile Call over Bluetooth.
4. Supported Yealink CPW90 Wireless Microphone.
5. Added the feature of Audio Recording.
6. Added the feature of Music on Hold (MoH).
7. Added the feature that you can sign into your Skype for Business Online account using the Web Sign-In method.
8. Added the feature of Initiating a Conference Call on Behalf of a Boss.

3. Optimization

None

4. Bug Fixes

None

5. New Features Descriptions

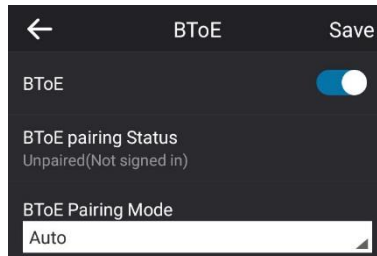
1. **Added the feature of Better Together over Ethernet (BToE).**

Description: Better Together over Ethernet (BToE) feature on Yealink CP960 Skype for Business phones enables you to control call from your phones and your computer using your Skype for Business client. You can also use BToE to sign into your phone

using your Skype for Business credentials. In order to use BToE, you need to download and install the Yealink BToE Connector application first.

To configure BToE feature via phone user interface:

Tap **More** -> **Features** -> **BToE**.



2. Added the feature of Connecting a PC Using a USB Cable.

Description: You can connect a PC to your Skype for Business phone using a USB cable. As a result, your phone acts as a speaker for calls or media played on your PC.

3. Added the feature of Placing a Mobile Call over Bluetooth.

Description: If you connect a Bluetooth-Enabled mobile phone with your Skype for Business phone, you can place a mobile call on your mobile phone or Skype for Business phone. The Skype for Business phone and mobile phone both show the active call. You can use the Skype for Business phone as a hands-free device for the call. You can use the Skype for Business phone to place both the mobile call and VoIP call, and two types of calls will not affect each other.

4. Added the feature of Audio Recording.

Description: If your phone is configured to enable audio recording feature, you can record local audio when the phone is idle or record active calls. You can record up to 12 hours in one file. By default, the recorded audios are saved in the internal SD card. You can also connect a USB flash drive to your phone, and choose to save the recorded audios to it instead of the internal SD card. You can play the recorded audios on either the phone itself or on a computer.

The parameters in the auto provision template are described as follows:

features.usb_call_recording.enable =

features.call_recording.enable =

features.call_recording.fast_entrance =

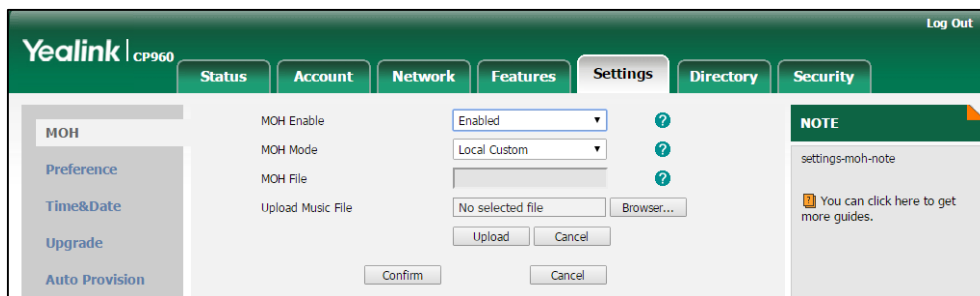
5. Added the feature of Music on Hold (MoH).

Description: Music on Hold (MoH) is the business practice of playing recorded music to fill the silence that would be heard by the party who has been placed on hold. When a call is placed on hold, the Skype for Business phone will play a music to the held party.

You can upload a custom music to the phone or use the music received from the Skype for Business server with the method of In-band provisioning.

To configure music on hold via web user interface:

Click **Settings** -> **MOH**.



6. Added the feature that you can sign into your Skype for Business Online account using the Web Sign-In method.

Description: You can sign into your Skype for Business Online account using the Web Sign-In method, which allows you to sign into the phone with your Skype for Business Online account using a web browser.

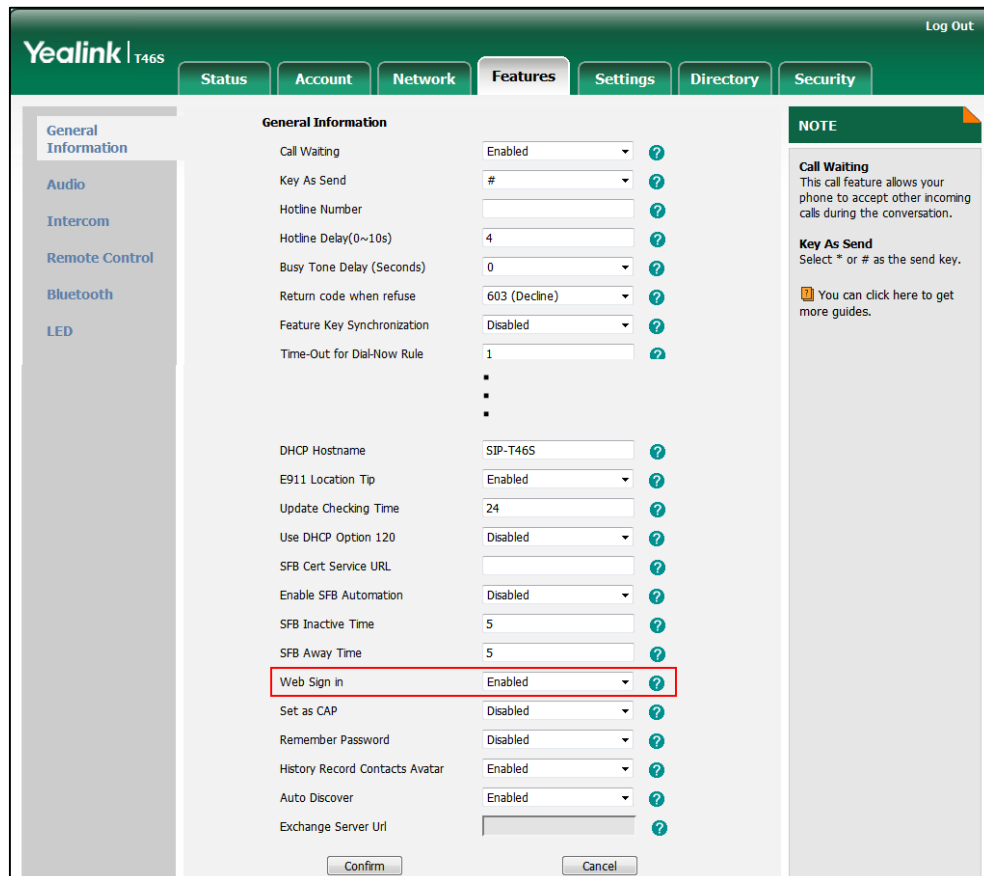
The parameters in the auto provision template are described as follows:

features.web_sign_in.enable =

features.device_pairing.url =

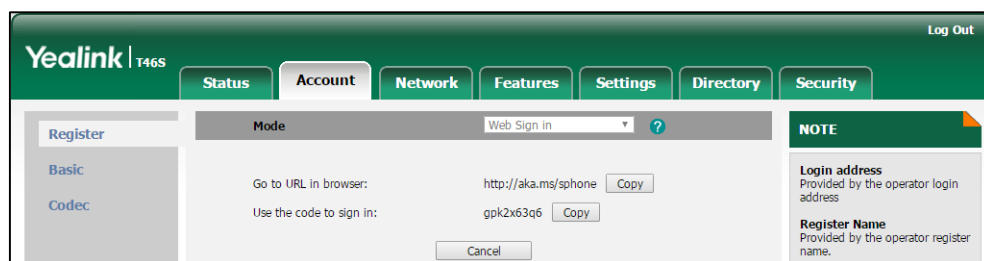
To enable the web sign-in via web user interface:

Click **Features** -> **General Information**.



To sign into the Skype for Business Server using Web Sign-In method via web user interface:

Click **Account** -> **Register**.

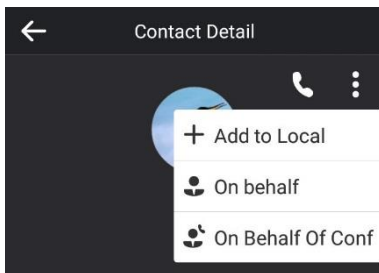


7. Added the feature of Initiating a Conference Call on Behalf of a Boss.

Description: The delegate can initiate a conference call on behalf of a boss.

To initiate a conference call on behalf of a boss's line:

Tap **Contacts** -> **Bosses**.



6. Configuration Parameters Enhancements

Auto Provision Template Flies Change Log							
Firmware Version: [73.8.0.17]-[73.8.0.27]							
Feature	Provisioning syntax Comparison		Permitted Values	Default Value	Action	Description	File
	73.8.0.17	73.8.0.27					
Account	static.account.1.sign_in.server_address =	account.sfb.1.server =	String within 128 characters	Blank	Change	It configures the sign-in address for the User Sign-in method. The value format is username@domain.com. Example: static.account.1.sign_in.server_address = 2216@yealinkuc.com	mac.cfg
Account	static.account.1.sign_in.user_name =	account.sfb.1.user_name =	String within 128 characters	Blank	Change	It configures the user name for the User Sign-in method. The value format is username@domain.com or username@domain, domain.com\username or domain\username. Example: static.account.1.sign_in.user_name= 2216@yealinkuc.com	mac.cfg
Account	static.account.1.sign_in.password =	account.sfb.1.password =	String within 128 characters	Blank	Change	It onfigures the password for the User Sign-in method.	mac.cfg
Account	static.account.1.sign_in.pin_number	account.sfb.1.pin_number =	String within 99 characters	Blank	Change	It configures the IP phone's extension for the PIN Authentication method.	mac.cfg

	=						
Account	static.account.1.sign_in.pin_password =	account.sfb.1.pin_password =	String within 99 characters	Blank	Change	It configures the PIN for the PIN Authentication method.	mac.cfg
Inband Proversion	static.account.1.auth_method =	account.sfb.1.auth_method =	0, 1, 2, 4 or 8	2	Change	It configures the login authentication method. 0-enabled all supported authentication method 1-org-id authentication 2-OAuth authentication 4-NTLM authentication 8-device pairing authentication	mac.cfg
Login		features.sign_in_via_btoe.enable =	0 or 1	1	Add	It enables or disables the user to sign into the phone via PC. 0-Disabled 1-Enabled Note: If it is set to 1 (Enabled), make sure your phone has paired with the Skype for Business client using BToE software, so that you can sign into the phone via PC.	common.cfg
Sign Out		phone_setting.idle_sign_out.enable =	0 or 1	0	Add	It enables or disables the phone to sign out of Skype for Business Server from the idle screen. 0-Disabled 1-Enabled	common.cfg
RPS		redirect.enable =	0 or 1	1	Add	It enables or disables the Redirection and Provisioning Server (RPS) provisioning. 0-Disabled 1-Enabled	common.cfg
RPS		auto_provision.rps_highest_priority.enable =	0 or 1	0	Add	It enables or disables the Redirection and Provisioning Server (RPS) method to be the highest priority when provisioning the Skype for Business phone automatically.	common.cfg

						0- the lowest priority 1-the highest priority	
Inband		phone_setting.receive_inband.enable =	0 or 1	1	Add	It enables or disables the phone to accept the in-band provisioning device settings from the Skype for Business server. 0-Disabled 1-Enabled	common.cfg
Inband		auto_provision.custom_protect =	0 or 1	0	Add	It enables or disables the provisioning methods priority. 0-Disabled, different provisioning methods (central provisioning, in-band Provisioning and manual Provisioning) have no priority. The subsequent operations always override previous operations regardless of the provisioning method you are using. 1-Enabled, different provisioning methods have priority (phone/web user interface>in-band provisioning>central provisioning>factory defaults). Provision with high priority will not be overwritten by provision with low priority.	common.cfg
Syslog		phone_setting.logging_to_usb_drive.enable =	0 or 1	0	Add	It enables or disables the phone to record local log messages to the connected USB flash drive. 0-Disabled 1-Enabled	common.cfg
Syslog		phone_setting.logging_to_btoc.enable =	0 or 1	0	Add	It enables or disables the phone to upload syslog messages to the paired PC using the BToE software. The log files will be saved at the	common.cfg

						root directory of BToE on your computer. 0-Disabled 1-Enabled	
Module Log Level Settings	syslog.directory_module.log_level =		Integer from 0 to 6	6	Delete	It configures the severity level of the directory logs.	common.cfg
Module Log Level Settings	syslog.account_module.log_level =		Integer from 0 to 6	6	Delete	It configures the severity level of the account logs.	common.cfg
Module Log Level Settings	syslog.dsskey_module.log_level =		Integer from 0 to 6	6	Delete	It configures the severity level of the DSSkey logs.	common.cfg
Module Log Level Settings	syslog.taskaction_module.log_level =		Integer from 0 to 6	6	Delete	It configures the severity level of the task action log.	common.cfg
Module Log Level Settings	syslog.setting_module.log_level =		Integer from 0 to 6	6	Delete	It configures the severity level of the setting module logs.	common.cfg
Module Log Level Settings	syslog.sfb_feature.log_level =		Integer from 0 to 6	3	Delete	It configures the severity level of the logs related to Skype for Business features.	common.cfg
Module Log Level Settings	syslog.register_loglevel =		Integer from 0 to 6	3	Delete	It configures the severity level of the register log.	common.cfg
Module Log Level Settings	syslog.subscribe_loglevel =		Integer from 0 to 6	3	Delete	It configures the severity level of the subscribe log.	common.cfg
Module Log Level Settings	syslog.calling_loglevel =		Integer from 0 to 6	3	Delete	It configures the severity level of the logs related to calling feature.	common.cfg
Module Log Level Settings	syslog.ice_loglevel =		Integer from 0 to 6	3	Delete	It configures the severity level of the ICE log.	common.cfg
Module Log Level Settings	syslog.exchange_loglevel =		Integer from 0 to 6	3	Delete	It configures the severity level of the Exchange log.	common.cfg
Phone Lock	sfb.phone_lock.time_out =	phone_setting.phone_lock.lock_time_out	Integer from 1 to 1440	10	Change	It configures the time (in minutes) the phone can be idle before it automatically locks.	common.cfg

		=					
BToE		<p>For T48S/T46 S/T42S/T41S Skype for Business phones: 1</p> <p>For CP960 Skype for Business phones: 0</p>	0 or 1		Add	<p>It enables or disables the BToE (Better Together over Ethernet) feature.</p> <p>0-Disabled 1-Enabled</p> <p>If it is set to 0 (Disabled), BToE is disabled on the phone. Your phone cannot pair with Skype for Business Client.</p>	common. cfg
BToE		<p>For T48S/T46 S/T42S/T41S Skype for Business phones: 1</p> <p>For CP960 Skype for Business phones: 0</p>	0 or 1	0	Add	<p>It configures the BToE pairing mode.</p> <p>0-Auto 1-Manual</p> <p>If it is set to 0 (Auto), you can pair your phone and PC without a pairing code.</p> <p>If it is set to 1 (Manual), your phone will generate a pairing code when pairing with PC. You need to enter the pairing code on your BToE software to manually to pair your phone and PC.</p> <p>Note: It works only if the value of the parameter "sip.btoe.enable" is set to 1 (Enabled).</p>	common. cfg
BToE		<p>For T48S/T46 S/T42S/T41S Skype for Business phones: 1</p> <p>For CP960 Skype for Business phones: 0</p>	0 or 1	1	Add	<p>It enables or disables the encryption transmission between the Skype for Business phone and connected computer when BToE (Better Together over Ethernet) feature is enabled.</p> <p>0-TCP 1-TLS encryption</p>	common. cfg
BToE		<p>For T48S/T46 S/T42S/T41S Skype for Business phones: 1</p> <p>For CP960 Skype for Business phones: 0</p>	0 or 1	0	Add	<p>It enables or disables the</p>	common.

		audio_dev.enable =				<p>Skype for Business phone to be used as an audio device when BToE (Better Together over Ethernet) is enabled in the VDI (Virtual Desktop Infrastructure) environment.</p> <p>0-Disabled 1-Enabled</p> <p>Note: We recommend that you set the value of this parameter to be 1 (Enabled) if you want to use BToE in the VDI environment.</p>	cfg
MOH		sfb.music_on_hold.mode =	0 or 1	1	Add	<p>It configures the source of the music played for the held party.</p> <p>0-Inband Provision 1-Local Custom</p> <p>If it is set to 1 (Enabled), your phone will play the music received from the Skype for Business Server (via Inband provisioning method) to the held party.</p> <p>If it is set to 0 (Disabled), your phone will play the custom music to the held party.</p> <p>Note: It works only if the value of the parameter "sfb.music_on_hold.enable" is set to 1 (Enabled).</p>	common.cfg
MOH		sfb.music_on_hold.url =	URL within 512 characters	Blank	Add	<p>It configures the access URL of the custom music file.</p> <p>Example: sfb.music_on_hold.url = tftp://192.168.1.100/Customring.wav</p> <p>Note: It works only if the values of the parameter "sfb.music_on_hold.enable" and parameter "sfb.music_on_hold.mode" are</p>	common.cfg

						set to 1.	
MOH		sfb.music_on_hold.delete =	URL within 512 characters	Blank	Add	Delete all custom music files. Example: sfb.music_on_hold.delete = http://localhost/all	common.cfg
MOH		sfb.music_on_hold.enable =	0 or 1	0	Add	It enables or disables the Music On Hold feature when placing an active call on hold. 0-Disabled 1-Enabled If it is set to 1 (Enabled), the Skype for Business phone will play built-in music when placing an active call on hold.	common.cfg
Autop Code		static.autoprovision.X.name =	String within 64 characters	Blank	Add	It configures the code name to trigger auto provisioning.	common.cfg
Autop Code		static.autoprovision.X.code =	String	Blank	Add	It configures the activation code to trigger auto provisioning. The activation code can be numeric characters, special characters # * or a combination of them. Example: static.autoprovision.1.code = 123 static.autoprovision.2.code = ** static.autoprovision.3.code = *123	common.cfg
Autop Code		static.autoprovision.X.url =	URL within 511 characters	Blank	Add	It configures the access URL of the provisioning server for the Skype for Business phone to perform auto provisioning which is triggered by activation code.	common.cfg
Autop Code		static.autoprovision.X.user =	String within 64 characters	Blank	Add	It configures the user name for authentication during auto provisioning which is triggered	common.cfg

						by activation code.	
Autop Code		static.autoprovision.X.password =	String within 32 characters	Blank	Add	It configures the password for authentication during auto provisioning which is triggered by activation code.	common.cfg
Autop Code		static.autoprovision.X.com_aes =	16 characters	Blank	Add	It configures the plaintext AES key for decrypting the Common CFG file. If it is configured, it has a higher priority than the value configured in the parameter "static.auto_provision.aes_key_16.com".	common.cfg
Autop Code		static.autoprovision.X.mac_aes =	16 characters	Blank	Add	It configures the plaintext AES key for decrypting the MAC-Oriented CFG file. If it is configured, it has a higher priority than the value configured in the parameter "static.auto_provision.aes_key_16.mac".	common.cfg
Features_ Bluetooth		features.bluetooth_enable =	0 or 1	0	Add	It triggers the Bluetooth feature to on or off. 0-Off 1-On	common.cfg
Features_ Bluetooth		features.bluetooth_adapter_name =	String within 64 characters	For CP960 Skype for Business phones: The default value is Yealink-CP960. For T48S Skype for Business phones: The default	Add	It configures the Bluetooth device name. Note: It works only if the value of the parameter "features.bluetooth_enable" is set to 1 (On).	common.cfg

				value is Yealink T48S. For T46S Skype for Business phones: The default value is Yealink T46S.			
Features_ Bluetooth		bluetooth.a2d p_sink =	0, 1 or 2	0	Add	It enables or disables the phone to display the Media audio option for the connected Bluetooth device. 0-Disabled 1-Enabled, the phone displays the Media audio option, but this option is disabled. 2-Enabled, the phone displays the Media audio option, and this option is enabled.	common. cfg
Features_ Bluetooth		features.bluetooth.fast_entrance =	0 or 1	0	Add	It enables or disables the phone to display a Bluetooth menu on the idle screen. 0-Disabled 1-Enabled	common. cfg
Record		features.call_recording.enable =	0 or 1	0	Add	It enables or disables the call recording feature for the phone. 0-Disabled 1-Enabled, you can use recording feature.	common. cfg
Record		features.call_recording.fast_entrance =	0 or 1	0	Add	It enables or disables the phone to display a Recording menu on the idle screen. 0-Disabled 1-Enabled	common. cfg

7. Default Value Setting Changes

Default Value Factory Setting Change Log			
Features	Description	Default Value of Factory Setting	
		73.8.0.17	73.8.0.27
Phone Lock	It enables or disables the phone to display the phone lock configuration. 0-Disabled 1-Enabled	phone_setting.phone_lock.enable = 1	phone_setting.phone_lock.enable = 0
CAP	It enables or disables the phone to use the voice mail feature. 0-Disabled 1-Enabled	features.voice_mail.enable = For individual phone: 1 For Common Area Phone: 0	features.voice_mail.enable = For T48S/T46S/T42S/T41S Skype for Business phone: 1 For CP960 Skype for Business phone: 0 For Common Area Phone: 0