

VAR Manual

Yealink Redirection and Provisioning Service (RPS)



December 2011

Contents

Contents	II
Welcome	IV
Guide for VAR User	1
1 Logging into the RPS	1
<i>To login the RPS Web UI</i>	1
2 Adding Users	2
<i>To add Users to your account</i>	2
3 Adding Devices	3
<i>To add devices to a server</i>	3
4 Mass adding devices by uploading a Comma-Separated Value (CSV) File	5
<i>To add multiple devices using a *.csv or .xls file</i>	5
5 Adding Servers	7
<i>To add a configuration server to the RPS</i>	7
6 Managing Your Account	8
<i>To change your profile</i>	8
<i>To change your password</i>	8
<i>To logout from the RPS</i>	8
<i>To view your summary information</i>	9
<i>To manage your Users</i>	10
<i>To manage your Devices</i>	11
<i>To manage your Servers</i>	12
<i>To view system Log</i>	13
Guide for User	14
Guide for End-user	15
About Yealink	17

Document Revision History

Release	Version	Reason for Change	Date	Author
1.0.2	1.0		December 1, 2011	Mike Hou

Welcome

About this manual

This Yealink Redirection and Provisioning Service Manual provides information on how to setup and operate on Yealink Redirection Service. This manual is for distributors, deployers, Users and VAR Users of Yealink products who configure and manage devices, servers and accounts.

Document Overview

This manual is divided into three main parts by user type:

For **VAR User**, please go to “[PAGE 1-13](#)”

For **User**, please go to “[PAGE 14](#)”

For **End-user**, please go to “[PAGE 15](#)”

Introduction

RPS is a free service developed for all Yealink customers worldwide. Through RPS, service providers can greatly simplify mass deployments of Yealink phones, save time and money in configuring and shipping phones, reduce errors caused by complicated manual configuration.

Guide for VAR User

1 Logging into the RPS

The Web UI URL is <https://dm.yealink.com>. First of all, a VAR User must be assigned a Username and Password by the Yealink Administrator, and then use these credentials to login the RPS.

To login the RPS Web UI

1. Type the URL in the address bar of your web browser and press <Enter>. The login page displays as Figure 1.1:

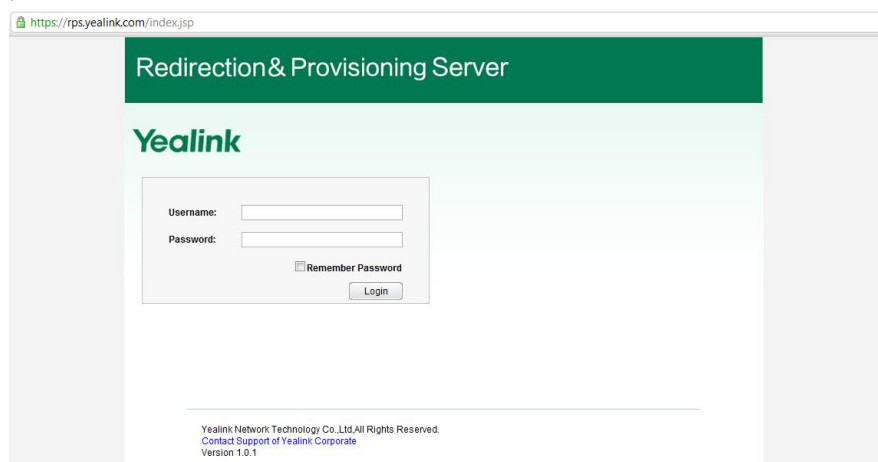


Figure 1.1

2. Enter the Username and Password provided by Yealink administrator and then press <Enter> or click Login button, the main page displays as Figure 1.2:



Figure 1.2

Notes:

- ① If you forget your username and password, please contact Yealink administrator for assistance.
- ② For security, you will logout automatically after you stay inactive for 10 minutes.

2 Adding Users

With a VAR User account, you can add as many Users as required, especially for Service Providers, your resellers and partners.

To add Users to your account

Please contact Yealink sales representatives to apply for adding Users to your account.

Adding Devices

Through adding devices, a VAR User can assign the Yealink devices to a specific server pre-added, which means VAR will redirect the devices to its own config server, for fallback, etc..

Additionally, as a VAR, you can help your service providers to register the devices.

To add devices to a server

1. On the summary page, click **Add Device** on the top shortcut-buttons, then Add Device dialog displays as Figure 3.1:

(Additionally, you can click **Add** button on Servers list page to display Add Server dialog)

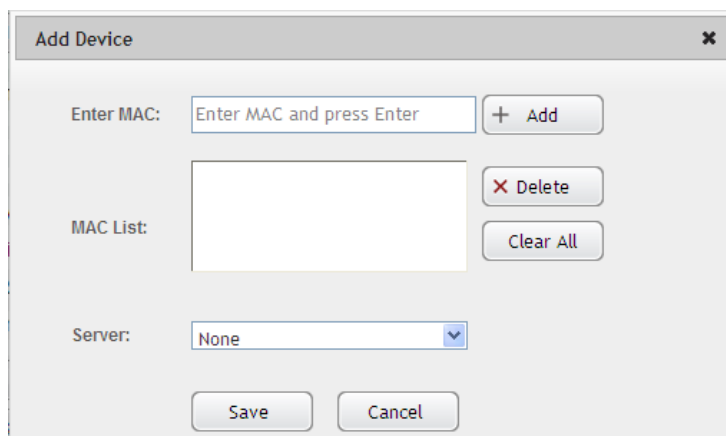
The image shows a dialog box titled "Add Device" with a close button (X) in the top right corner. Inside the dialog, there are three main sections. The first section is labeled "Enter MAC:" and contains a text input field with the placeholder text "Enter MAC and press Enter", followed by a "+ Add" button. The second section is labeled "MAC List:" and contains a large empty rectangular box, a "X Delete" button, and a "Clear All" button. The third section is labeled "Server:" and contains a dropdown menu currently showing "None". At the bottom of the dialog are "Save" and "Cancel" buttons.

Figure 3.1

2. In the **Enter MAC** field, enter a valid MAC address and press <Enter>, the MAC address you entered appears in the MAC List, in this way, you can add multiple MAC addresses one by one.

Notes:

- ① Four types of valid MAC address formats are 001565000001, 00-15-65-00-00-01, 00 15 65 00 00 01, 00:15:65:00:00:01
 - ② "Invalid MAC" notification means that the MAC address format is invalid.
 - ③ Each MAC address can only be added one time by the same user. If you want to re-add the MAC address, you should delete it and then add it.
 - ④ If you enter a MAC that another RPS user has added, "Override current registration, continue?" notification will pop up, you should check the MAC carefully before pressing "Yes" to override.
3. In the **MAC List** field, you can delete or clear the incorrect MAC addresses
 4. In the **Server** field, you can select the server that you want to assign the MAC addresses to.

Notes:

The Server field can be None.

5. Click **Save** button to add these MAC addresses.
6. After adding devices successfully, Devices page displays as Figure 3.2, and the MAC addresses you just added will display in the top of the list.

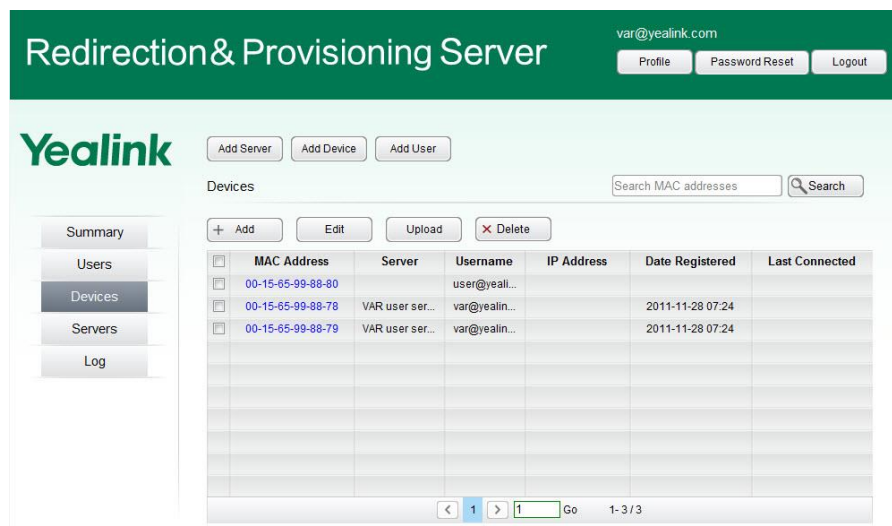


Figure 3.2

4 Mass adding devices by uploading a Comma-Separated Value (CSV) File

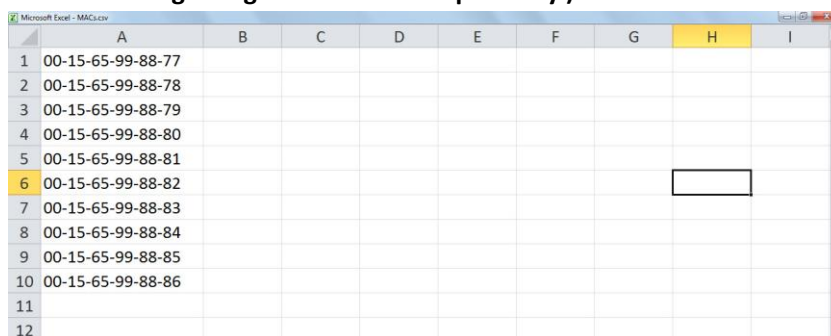
Through this feature, you can add a large number of MAC addresses at one time. You can save these devices' MAC addresses in a *.csv or *.xls file on your PC, and then upload it to the RPS.

To add multiple devices using a *.csv or .xls file

1. Open a new document using a spreadsheet application(i.e., Microsoft Excel™)
2. In the first column, enter the MAC addresses of the devices you want to add to the RPS. One example is shown as Figure 4.1

Notes:

- ① You must type the MAC addresses in the first column. Other columns will be ignored.
- ② 00-15-65-00-00-01 format is recommended. In addition, 001565000001, 00 15 65 00 00 01, 00:15:65:00:00:01 are also supported.(001565000001 format is not available in *.csv file, because the "00" in the beginning will cause incompatibility.)



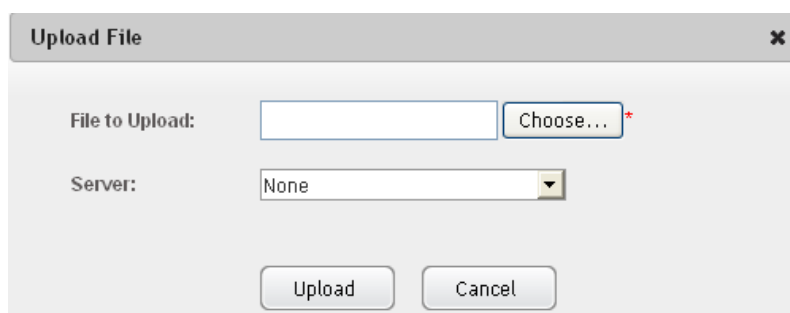
	A	B	C	D	E	F	G	H	I
1	00-15-65-99-88-77								
2	00-15-65-99-88-78								
3	00-15-65-99-88-79								
4	00-15-65-99-88-80								
5	00-15-65-99-88-81								
6	00-15-65-99-88-82								
7	00-15-65-99-88-83								
8	00-15-65-99-88-84								
9	00-15-65-99-88-85								
10	00-15-65-99-88-86								
11									
12									

Figure 4.1

3. Save your file on your PC using "Save as" in the format ".csv" or ".xls". And the name can be user-defined.

Notes:

- ① The file must be less than 1MB in size.
 - ② To check the validity of your .csv file, open it from plain-text program (i.e., Notepad, TextEdit). Make sure there are no extra commas, other than between fields.
 - ③ *.xlsx file is not supported at the moment.
4. On the summary page, click Devices on the left menu, then Devices page displays as Figure 3.2:
 5. Click **Upload** button, the Upload File dialog displays as Figure 4.2:



Upload File [Close]

File to Upload: Choose...

Server: None

Upload Cancel

Figure 4.2

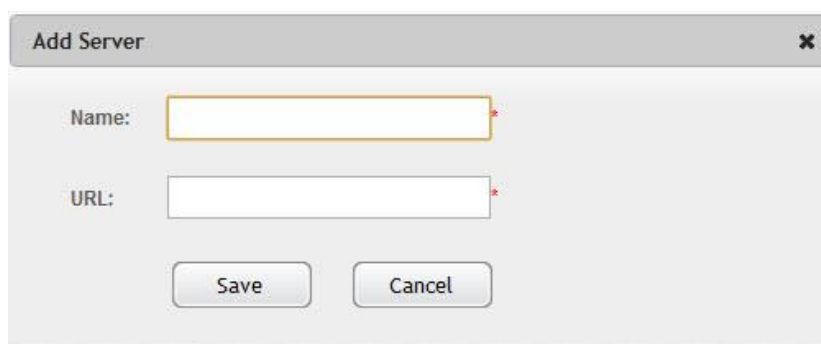
6. In the **File to Upload** field, click <Browser...> to find the file you saved on your PC.
7. In the **Server** field, generally select None or specially select the server added by yourself.
8. Click **Save** button to add these MAC addresses.
10. After adding devices successfully, Devices page displays, and the MAC addresses you just added will display in the top of the list.

5 Adding Servers

Before a device can be redirected to a specific configuration server, the server must be added to the RPS by entering a name and a URL.

To add a configuration server to the RPS

1. On the summary page, click **Add Server** on the top shortcut-buttons, then Add Server dialog displays as Figure 5.1:
(Additionally, you can click **Add** button on Servers list page to display Add Server dialog)



The 'Add Server' dialog box is a light gray window with a title bar containing the text 'Add Server' and a close button (X). Inside the dialog, there are two input fields: 'Name:' and 'URL:'. Each field has a red asterisk (*) to its right, indicating a required field. Below the input fields are two buttons: 'Save' and 'Cancel'.

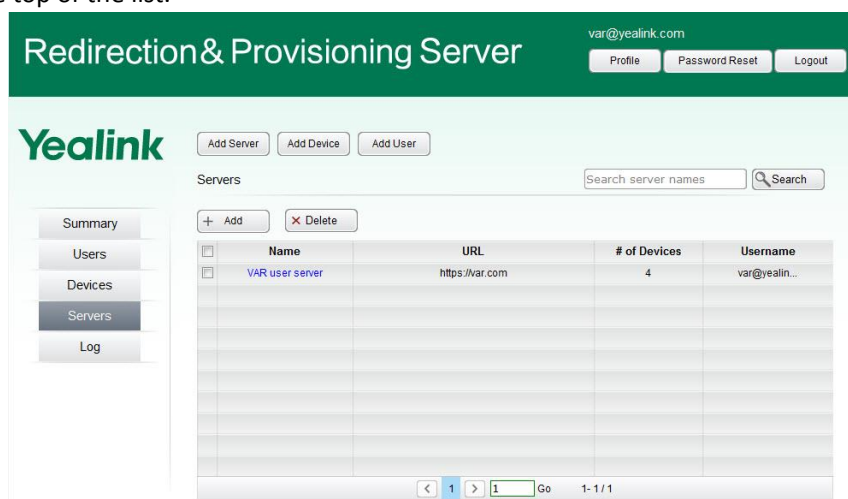
Figure 5.1

2. In the **Name** field, enter the name that must be less than 20 characters.
3. In the **URL** field, enter the exact server address that must be less than 255 characters

Note:

Four types of URL are supported: https/http/ftp/tftp

4. Click **Save** button to add the server to the RPS.
5. After adding server successfully, Servers page displays as Figure 5.2. The server you just added will display in the top of the list.



The screenshot shows the Yealink RPS interface. At the top, there's a green header with 'Redirection & Provisioning Server' and a user profile 'var@yealink.com' with buttons for 'Profile', 'Password Reset', and 'Logout'. Below the header, the 'Yealink' logo is on the left, and on the right are buttons for 'Add Server', 'Add Device', and 'Add User'. A sidebar on the left contains a menu with 'Summary', 'Users', 'Devices', 'Servers' (highlighted), and 'Log'. The main area is titled 'Servers' and has a search bar 'Search server names' and a 'Search' button. Below this are '+ Add' and 'x Delete' buttons. A table lists the servers:

	Name	URL	# of Devices	Username
<input type="checkbox"/>	VAR user server	https://var.com	4	var@yealin...
<input type="checkbox"/>				
<input type="checkbox"/>				
<input type="checkbox"/>				
<input type="checkbox"/>				
<input type="checkbox"/>				
<input type="checkbox"/>				
<input type="checkbox"/>				
<input type="checkbox"/>				
<input type="checkbox"/>				

At the bottom of the table, there's a pagination bar showing '< 1 >' and 'Go 1-1/1'.

Figure 5.2

6 Managing Your Account

To change your profile

1. Click **Profile** button on the top-right menu, Edit Profile dialog displays as Figure6.1

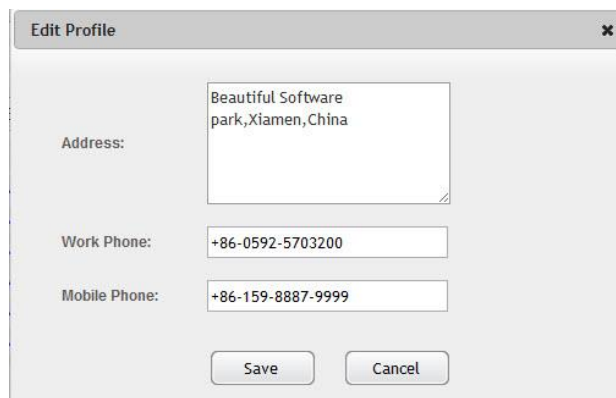
The 'Edit Profile' dialog box has a title bar with 'Edit Profile' and a close button. It contains three input fields: 'Address' with the text 'Beautiful Software park,Xiamen,China', 'Work Phone' with '+86-0592-5703200', and 'Mobile Phone' with '+86-159-8887-9999'. At the bottom are 'Save' and 'Cancel' buttons.

Figure 6.1

2. You can change your address, work phone and mobile phone.
3. Click Save button to save your changes.

To change your password

1. Click **Password Reset** button on the top-right menu, Reset User Password dialog displays as Figure6.2

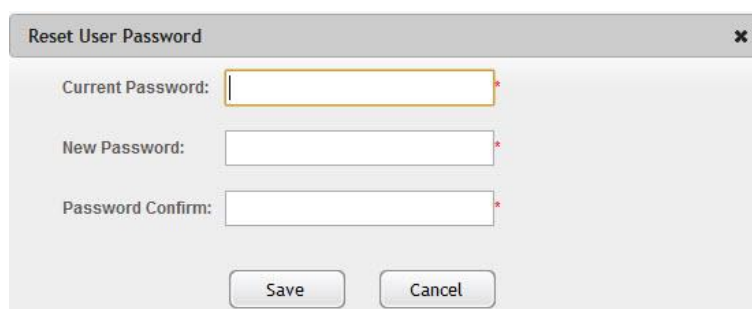
The 'Reset User Password' dialog box has a title bar with 'Reset User Password' and a close button. It contains three input fields: 'Current Password', 'New Password', and 'Password Confirm', each with a red asterisk indicating a required field. At the bottom are 'Save' and 'Cancel' buttons.

Figure 6.2

2. Enter your current password, new password and confirm new password.
3. Click Save button to save your new password.

To logout from the RPS

1. Click **Logout** button on the top-right menu, login interface displays as Figure 6.3.

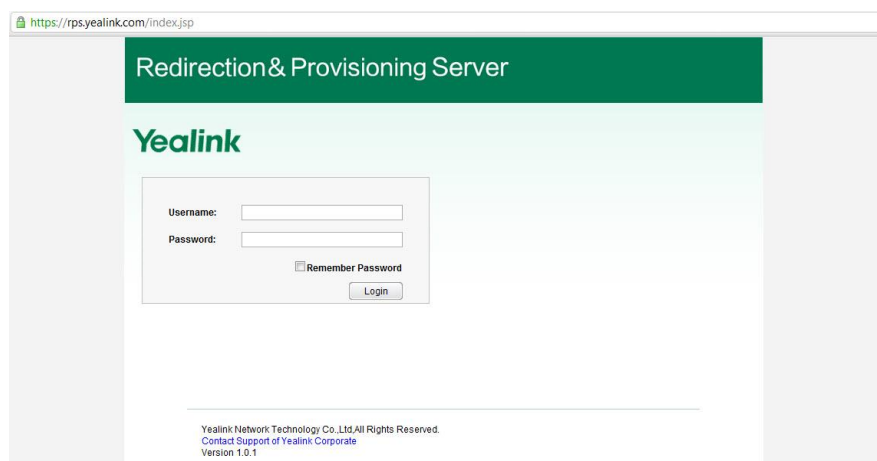


Figure 6.3

To view your summary information

1. Click Summary on the left menu, Summary page displays as Figure 6.4.



Figure 6.4

2. You can know the count of Servers added by you and your Users, the count of Devices you own, the count of Users added by you.

Note:

“Devices:10 (1 Unregistered)” means: you have 10 pieces of Yealink products added to RPS in total, there into, 1 of them has not been assigned to a specific server.

3. You can check one device’s registration status by the MAC address. Click Check Device Status button and fill the MAC address you want to check, then click Save or Press <Enter>, the status will appear.
4. You can set Unregistered Devices. Click Set Unregistered Devices button and the Unregistered devices page displays as Figure 6.5

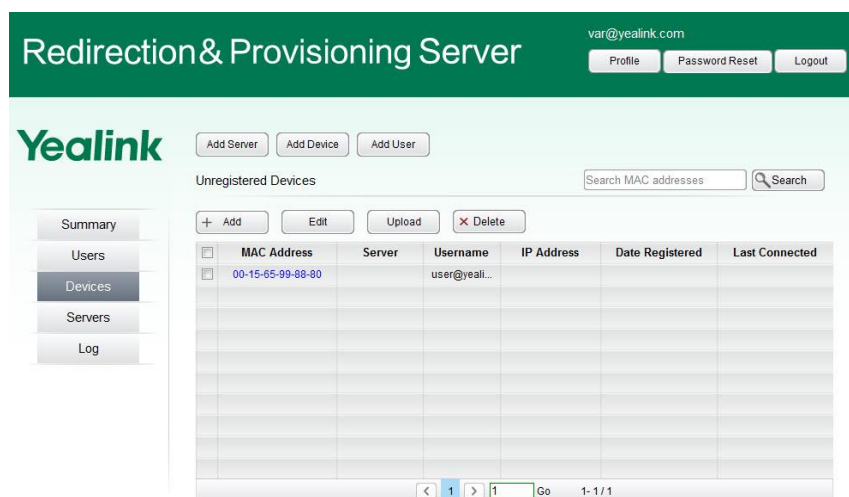


Figure 6.5

To manage your Users

1. Click Users on the left menu, Users page displays as Figure 6.6

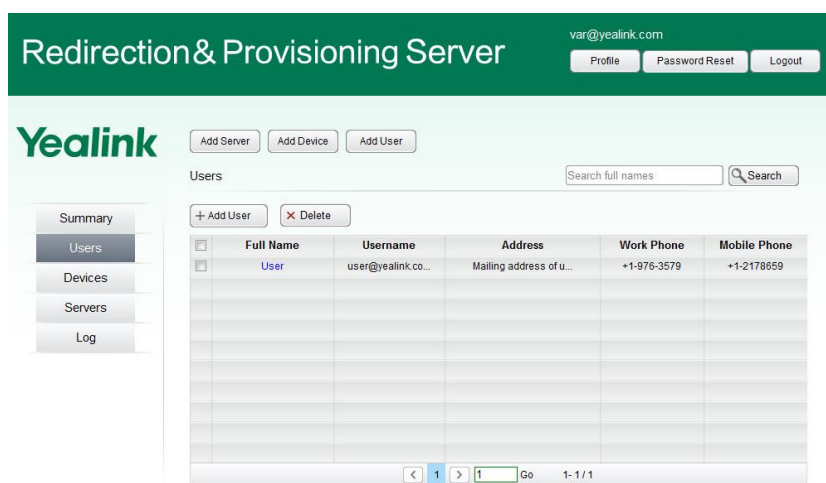


Figure 6.6

2. On the Users page, you can manage your users through the following operation:

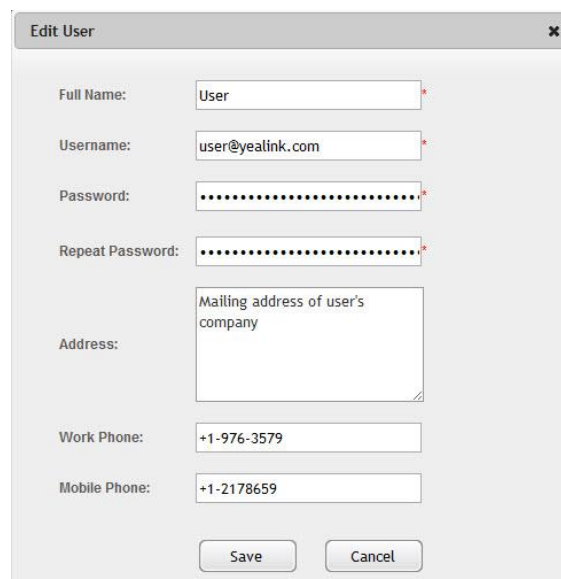
Add User: Click Add User button, then see “**Adding User**” part

Delete User: Click the checkbox beside the User name and then Click Delete button on the top.

Caution:

Deleting a User cannot be undone. After the user is deleted, all the data associated with it will be removed.

Edit User: Just click the Full Name of the user which is blue font. Edit User page displays as Figure 6.7



The 'Edit User' dialog box contains the following fields and buttons:

- Full Name:** Text input field with 'User' entered.
- Username:** Text input field with 'user@yealink.com' entered.
- Password:** Password input field (masked with dots).
- Repeat Password:** Password input field (masked with dots).
- Address:** Text area with placeholder text 'Mailing address of user's company'.
- Work Phone:** Text input field with '+1-976-3579' entered.
- Mobile Phone:** Text input field with '+1-2178659' entered.
- Buttons:** 'Save' and 'Cancel' buttons at the bottom.

Figure 6.7

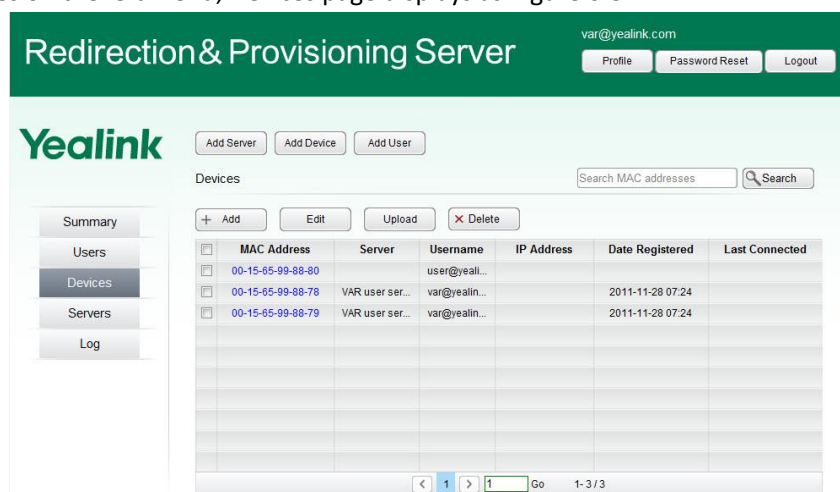
Change password for User: Just delete the current password and enter new password, repeat password, then click Save button.

Find User: Just enter part or full name of the user in the search frame, then click Search button, and search results displays in Users page.

View Users: You can sort all the users by clicking any of the column headings in ascending or descending order. By default, users are sorted in descending order by modification date.

To manage your Devices

1. Click Devices on the left menu, Devices page displays as Figure 6.8.



The 'Redirection & Provisioning Server' interface shows the 'Devices' page. It includes a sidebar with navigation links: Summary, Users, **Devices**, Servers, and Log. The main content area has buttons for 'Add Server', 'Add Device', and 'Add User'. Below these are 'Add', 'Edit', 'Upload', and 'Delete' buttons. A search bar for 'MAC addresses' is present. A table lists devices with columns: MAC Address, Server, Username, IP Address, Date Registered, and Last Connected. The table shows three devices with blue MAC addresses. At the bottom, there is a pagination control showing '1' of '1' items.

MAC Address	Server	Username	IP Address	Date Registered	Last Connected
00-15-65-99-88-80		user@yeall...			
00-15-65-99-88-78	VAR user ser...	var@yealin...		2011-11-28 07:24	
00-15-65-99-88-79	VAR user ser...	var@yealin...		2011-11-28 07:24	

Figure 6.8

Note:

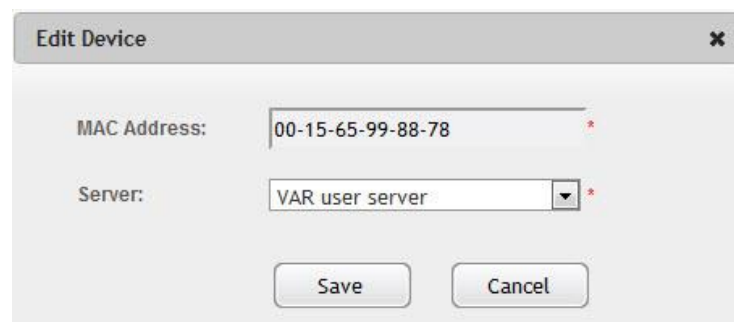
The devices you can see are the devices that you have added to the RPS.

2. On the Devices page, you can manage your devices through the following operation:

Add Device: Please see “[Adding device](#)” part

Upload Devices: Please see “[Mass adding devices](#)” part

Edit Device: Just click the MAC address that is blue font. The Edit Device page displays as Figure 6.9



Edit Device

MAC Address: 00-15-65-99-88-78 *

Server: VAR user server *

Save Cancel

Figure 6.9

Delete Devices: Click the checkbox beside the MAC address and then Click Delete button on the top.

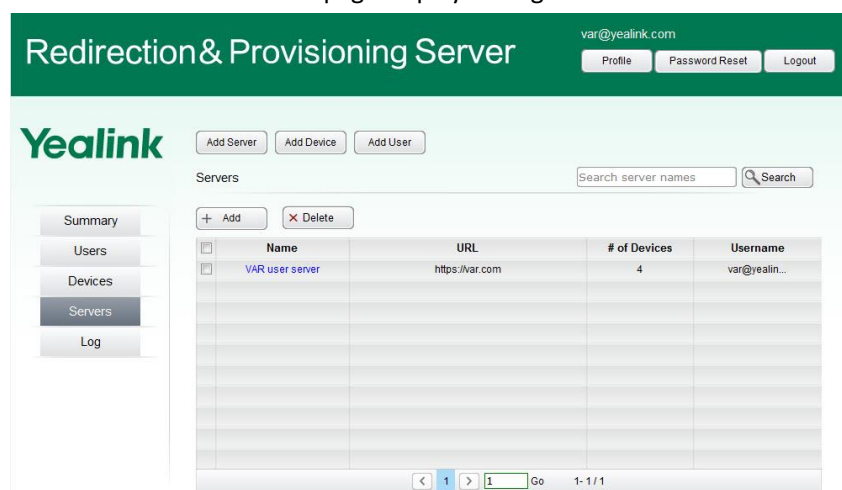
Caution:

Deleting a device cannot be undone. After the device is deleted, the association with the server will be removed, but you can re-add it to the RPS anytime.

View Devices: You can sort all the devices by clicking any of the column headings in ascending or descending order. By default, devices are sorted in descending order by modification date.

To manage your Servers

1. Click Servers on the left menu. Servers' page displays as Figure 6.10.



Redirection & Provisioning Server var@yealink.com Profile Password Reset Logout

Yealink Add Server Add Device Add User

Servers Search server names Search

+ Add X Delete

	Name	URL	# of Devices	Username
<input checked="" type="checkbox"/>	VAR user server	https://var.com	4	var@realin...
<input type="checkbox"/>				
<input type="checkbox"/>				
<input type="checkbox"/>				
<input type="checkbox"/>				
<input type="checkbox"/>				
<input type="checkbox"/>				
<input type="checkbox"/>				
<input type="checkbox"/>				
<input type="checkbox"/>				

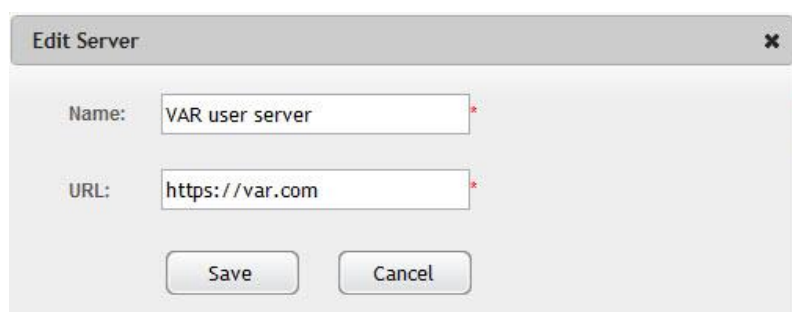
< 1 > 1 Go 1-1/1

Figure 6.10

2. On the Servers page, you can manage your devices through the following operation:

Add a Server: Please see [“Adding server”](#) part

Edit a Server: Just click the server Name that is blue font. The Edit Server page displays as Figure 6.11



Edit Server

Name: VAR user server *

URL: https://var.com *

Save Cancel

Figure 6.11

Delete Servers: Click the checkbox beside the server name and then click Delete button on the top.

Caution:

Deleting a server cannot be undone. After the server is deleted, those devices associated with the server will be removed from the RPS.

View Servers: You can sort all the servers by clicking any of the column headings in ascending or descending order. By default, servers are sorted in descending order by modification date.

To view system Log

1. Click **Log** on the left menu. Log page displays as Figure 6.12.

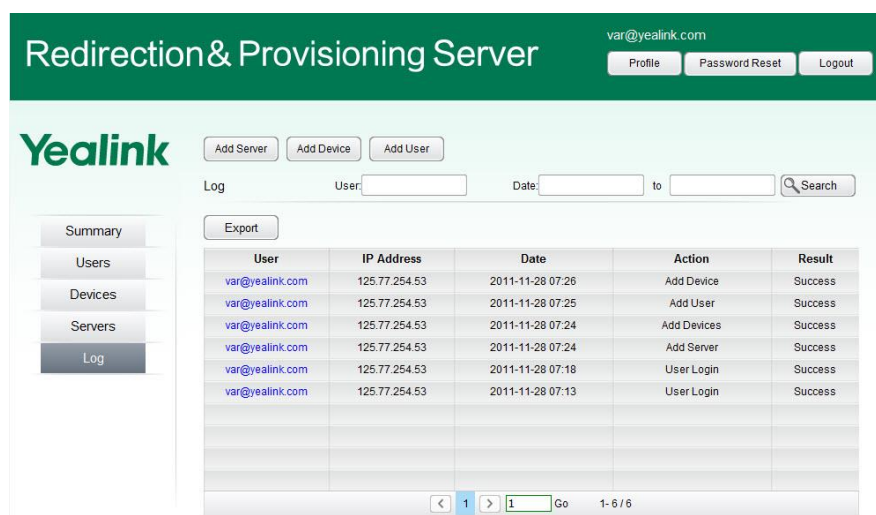


Figure 6.12

2. On the Log page, you can manage your devices through the following operation:
 - (1) Export operation log by clicking Export button.
 - (2) Search log by user name and date.
 - (3) View the log by sorting them in the column headings.

Note:

If you want to use API for reprogramming to your system, i.e. IP PBX, ERP or Website, you can contact Yealink team to get "XML-API for Yealink RPS" document.

Guide for User

The following table identifies the functions for a VAR User and User:

Function	VAR User	User
General		
View summary information of your account	✓	✓
Change your profile for your account	✓	✓
Change your password for your account	✓	✓
Add servers to the RPS	✓	✓
Add devices to the RPS (by MAC address)	✓	✓
Upload devices to the RPS by csv/xls file	✓	✓
To manage your servers	✓	✓
To manage your devices	✓	✓
View system log	✓	✓
Exclusive		
Add Users to your account	✓	-
To manage your Users	✓	-

User screens are a subset of VAR User screen, therefore, for more details for User operation, please see “VAR session” on [Page 3-14](#).

Note:

If you want to use API for reprogramming to your system, i.e. IP PBX, ERP or Website, you can contact your local distributor to get “XML-API for Yealink RPS” document.

Guide for End-user

When the end-user gets the IP phone, power up the phone, the bootup processes on Yealink T28 IP phone are as followings:

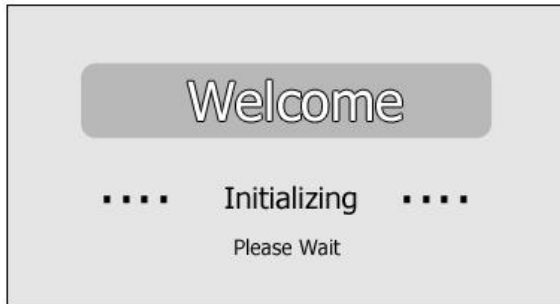


Figure 1

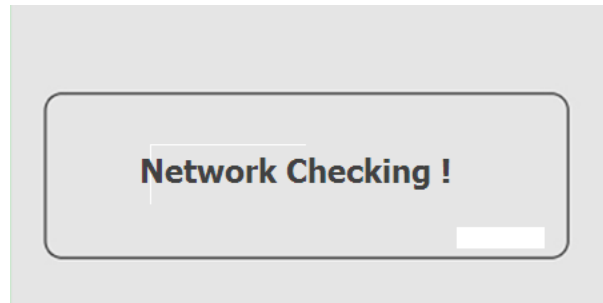


Figure 2

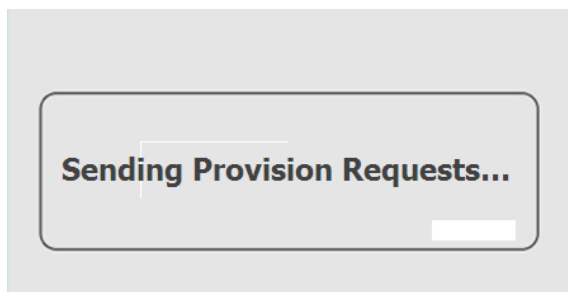


Figure 3

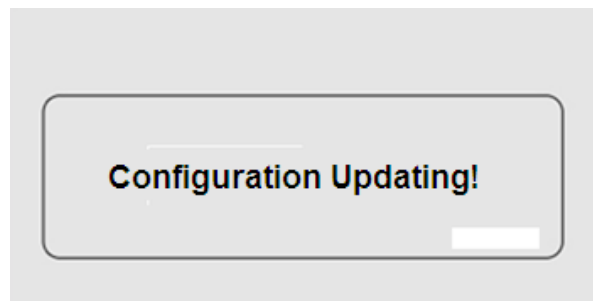


Figure 4

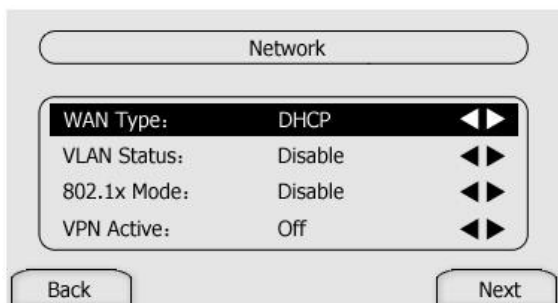


Figure 5

1. On **Figure 2** , if your phone cannot connect to the network, then “Network Unavailable !” will display on the screen. Approximately 50 seconds later, **Figure 5** will come out to allow you to reconfigure the network, at this point you should check your network cable connection or set your network parameters, then press Next softkey to try again. (Press Back softkey will skip the process of contacting the RPS and boot up normally.)
2. On **Figure 3** , the phone is contacting the RPS and getting the specific URL of the configuration server.
3. If network is available, the phone will go to Configuration Updating interface.
4. After successfully updating, your phone will reboot automatically. If failed, “Update Failed! ”will display on the LCD first ,and go to idle interface 3 seconds later.

Notes:

- ① After the screen of configuration updating, the authentication screen will display if the configuration server is authority required. On the authentication screen, you should enter the username and password provided by your service provider.
- ② After the configuration update is done, the phone won't contact the RPS until you reset the phone to factory default.
- ③ If you really want the phone to contact the RPS again without resetting to factory default (e.g., you don't want to lose your personal configuration in the phone), you can contact your service provider for assistance.

About Yealink

Founded in 2001, Yealink is the professional designer and manufacturer of IP Phone and IP Video Phone for the world-wide broadband telephony market. For more than ten years, Yealink has focused on VoIP products characterized by high cost-performance, easy deployment and affordable price. Yealink benefits customers from flexibility and broad interoperability with the major IP-PBX, softswitch and IMS in the market. Chosen by famous carriers, enterprises and clients from over 80 countries, Yealink provides SMB and diversified customers from all over the world a best choice to extend the value of network communication.



Contact us

Yealink Network Technology Co., Ltd.

Addr: 4th-5th Floor, South Building, No.63 Wanghai Road,
2nd Software Park, Xiamen, China (361008).

Tel: 86-592-570-2000

www.yealink.com