

Yealink



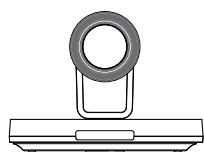
Yealink Network Technology CO., LTD

Yealink VC800 Full HD Video Conferencing System Quick Start Guide

V30.8

Applies to firmware version 63.30.0.6 or later

Packaging Contents



VC800 Codec



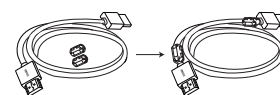
VCH50 Video
Conferencing Hub



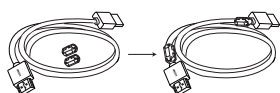
VCR11
Remote Control



AAA Batteries×2



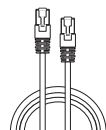
1.8m
HDMI Cable×2
(for the display device)



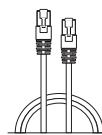
1.2m
HDMI Cable
(for content sharing)



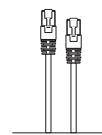
1.2m
Mini DP Cable



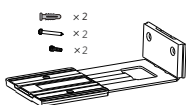
7.5m
Ethernet Cable



3m
Ethernet Cable



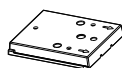
0.5m
Ethernet Cable



Mounting Bracket
and Accessories



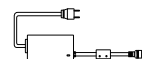
Velcro×2
(One Velcro is on the bracket)



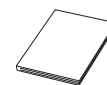
VESA Accessory



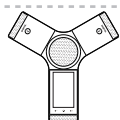
Cable Ties×5



Power Adapter



VC800
Quick Start Guide



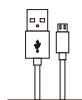
CP960
Conference Phone



CPW90 Wireless
Expansion Mic×2



Charger Cradle

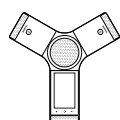


0.3m
Micro USB Cable



CPW90
Quick Start Guide

A Package



CP960
Conference Phone



CPE90 Wired
Expansion Mic×2

B Package

💡 We recommend that you use the accessories provided or approved by Yealink. The use of unapproved third-party accessories may result in reduced performance.

💡 VC800 codec can work with A package or B package.

💡 The VC800 system should be used with Yealink original power adapter (48V/0.7A) only. The use of the third-party power adapter may cause the damage to the system. The cable and wire should be replaced at once if its skin is broken.

💡 Before using the HDMI cable, put the magnet rings on it to prevent electromagnetic interference.

VC800 Codec Installation

Select one of the following installation method based on your site requirements:

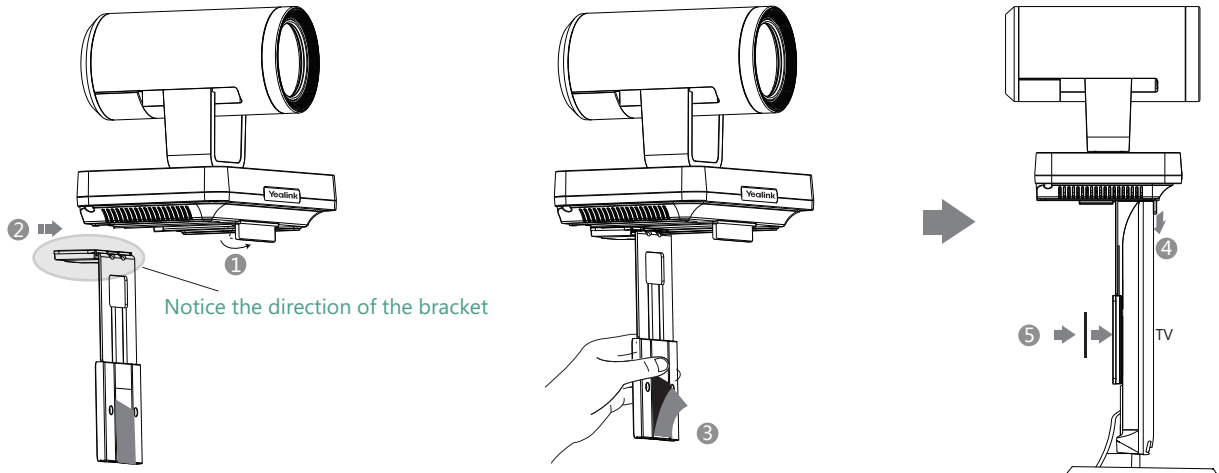
- a. Put on a Flat Surface b. Mount on top of a TV c. Mount on a wall d. Mount on a ceiling e. Mount onto a TV stand or a tripod

● Put on a Flat Surface

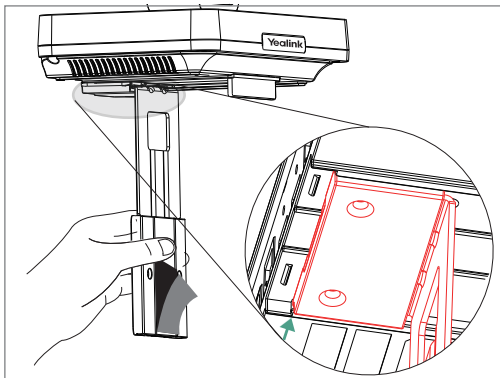
You can put the VC800 codec on a conference room table, and make sure that the slope is not more than 5 degrees so that the VC800 can operate correctly.

● Mount on top of a TV

Please choose the following installation method when the thickness of the TV is between 16mm and 55mm.

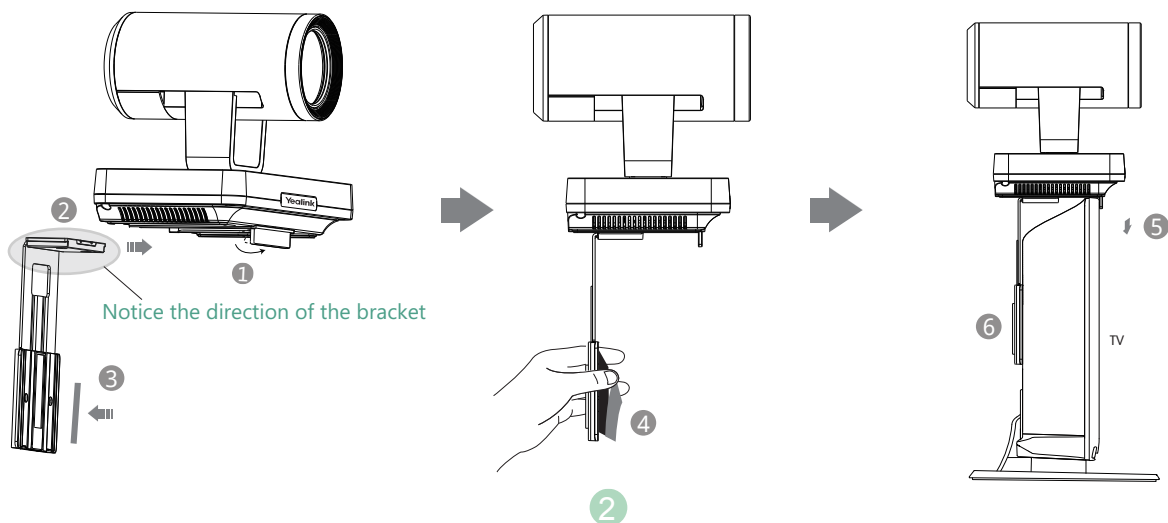


- Steps: ① Open the baffle.
② Push the bracket along the track of the V800 codec.
③ Remove one Velcro.
④ Put the bracket on the top of the TV.
⑤ Stick a Velcro onto the back of the TV, and make sure that the bracket and the back of the TV are tightly positioned against each other.

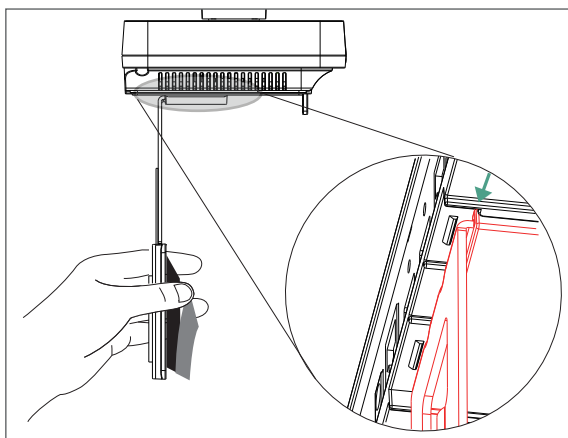


💡 If your VC800 codec cannot be mounted on the top of a TV when the bracket has reached the given location, remove the bracket, and then convert its direction. Refer to the following section for more information.

Please choose the following installation method when the thickness of the TV is between 50mm and 100 mm.

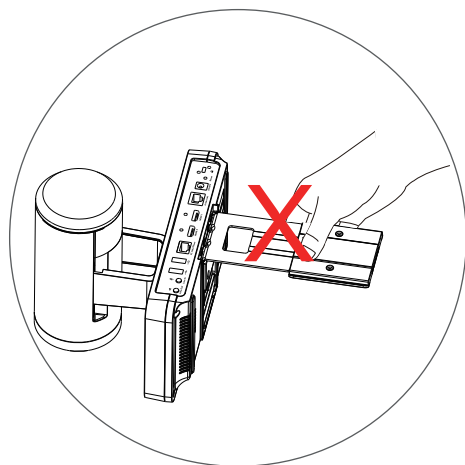


- Steps:
- ① Open the baffle.
 - ② Push the bracket along the track of the VC800 codec.
 - ③ Stick a Velcro onto the bracket.
 - ④ Remove one Velcro.
 - ⑤ Put the bracket on the top of the TV.
 - ⑥ Stick a Velcro onto the back of the TV, and make sure that the bracket and the back of the TV are tightly positioned against each other.



💡 If your VC800 codec cannot be mounted on the top of a TV when the bracket has reached the given location, you should choose other installation methods.

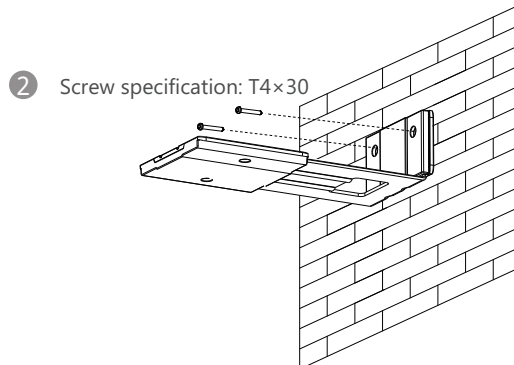
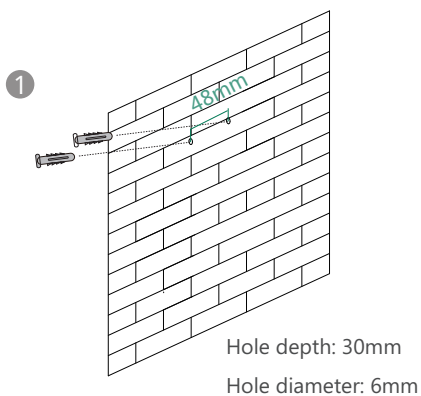
The VC800 codec may fall down when the thickness of the TV is more than 100 mm. In this situation, do not mount the VC800 on the top of a TV.

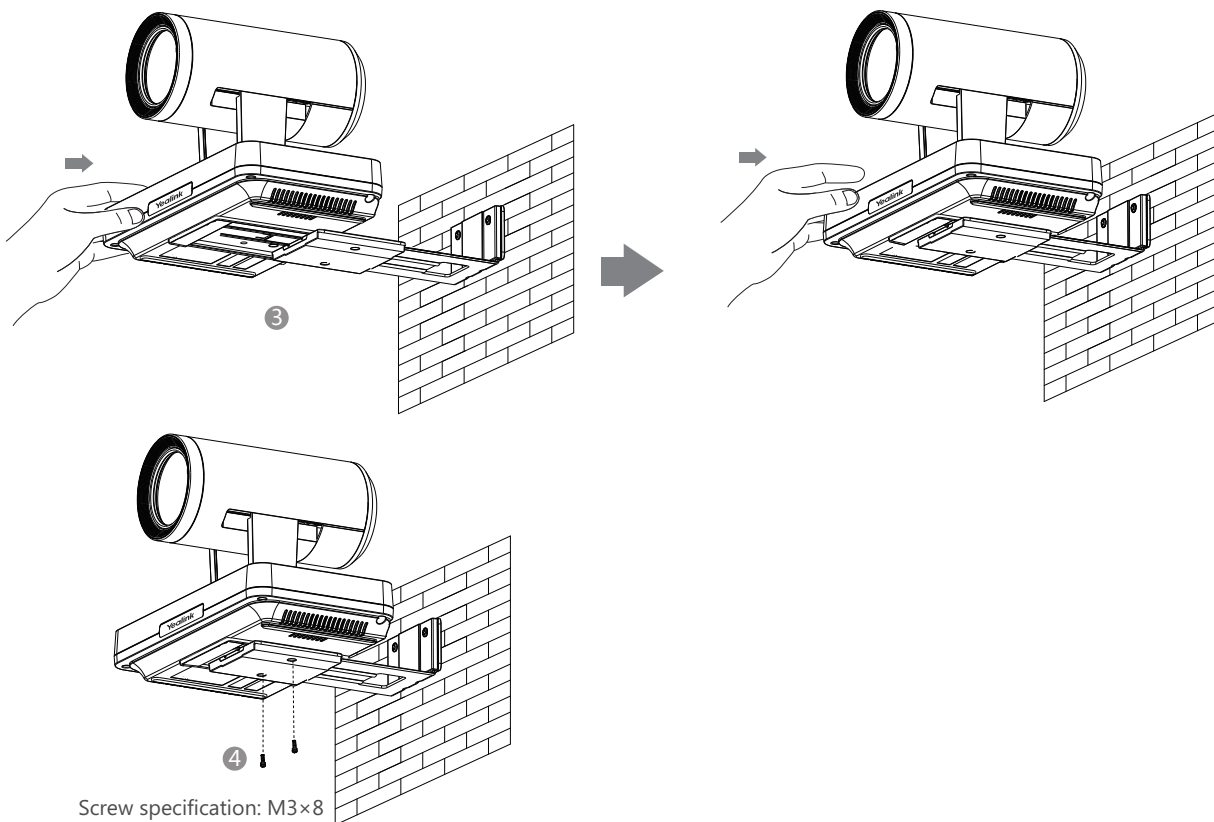


💡 Do not pick up the bracket which connects with a VC800 codec, the VC800 codec may fall down in this situation.

● Mount on a Wall

The recommended height for VC800 codec positioning is 1.5m-1.8m above the ground.



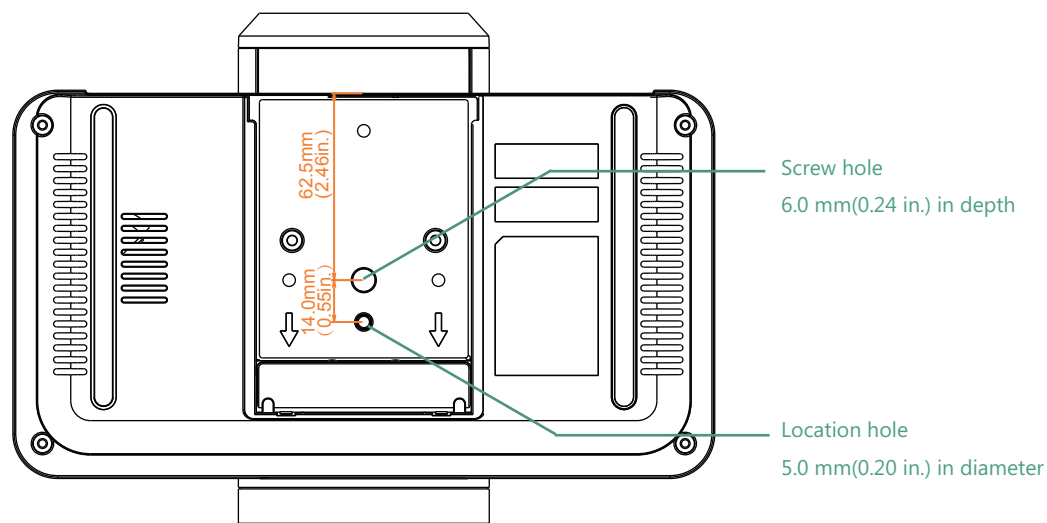


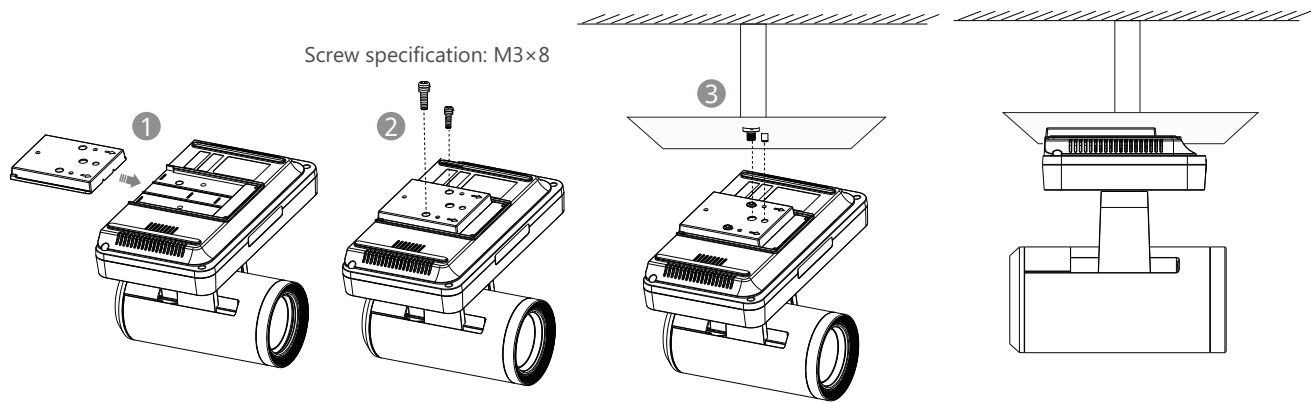
- Steps:
- ① Punch holes into the wall and then insert the expansion bolts.
 - ② Secure the bracket using the T4×30 screws.
 - ③ Push the VC800 codec along the track of the bracket.
 - ④ Secure the VC800 codec onto the bracket using the M3×8 screws.

● Mount on a Ceiling

If you choose the ceiling-mounted installation, you need to purchase a bracket separately. The bracket must meet the following requirements:

- Able to bear a weight of at least 10.5kg (23.15 lb.) and has a thickness between 2mm (0.08 in.) and 3 mm (0.12 in.).
- Comes with a 1/4"-20 UNC screw.
- Comes with a location pillar, which can be inserted into the location hole of the VESA accessory.
- The distance between the screw on the bracket and the location pillar must be 14 mm (0.55 in.).



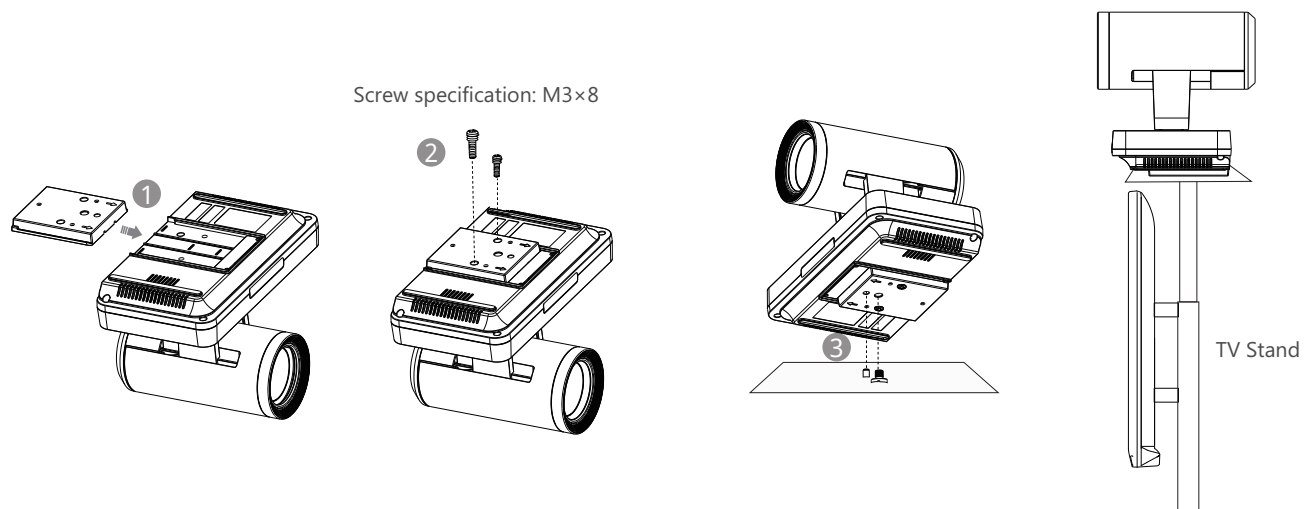


- Steps:
- ① Push the VESA accessory along the track of the VC800 codec.
 - ② Secure the VESA accessory to the VC800 codec using the M3×8 screws.
 - ③ Align the location pillar at the location hole, and then secure the bracket to the VESA accessory using the 1/4"-20 UNC screw.

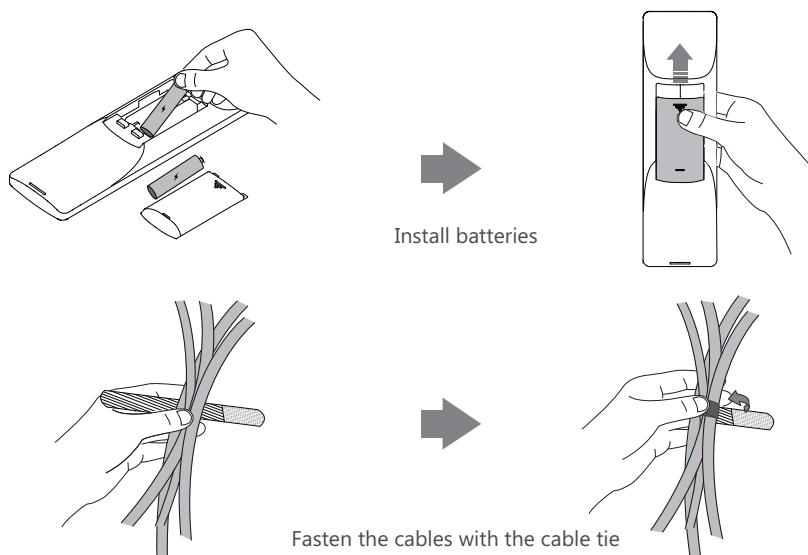
● Mount onto a TV Stand or a Tripod

You need to purchase a TV stand or a tripod separately. The TV stand or tripod has the same requirements as the bracket used in the ceiling-mounted installation method.

The installation steps are the same as the ceiling-mounted installation steps.

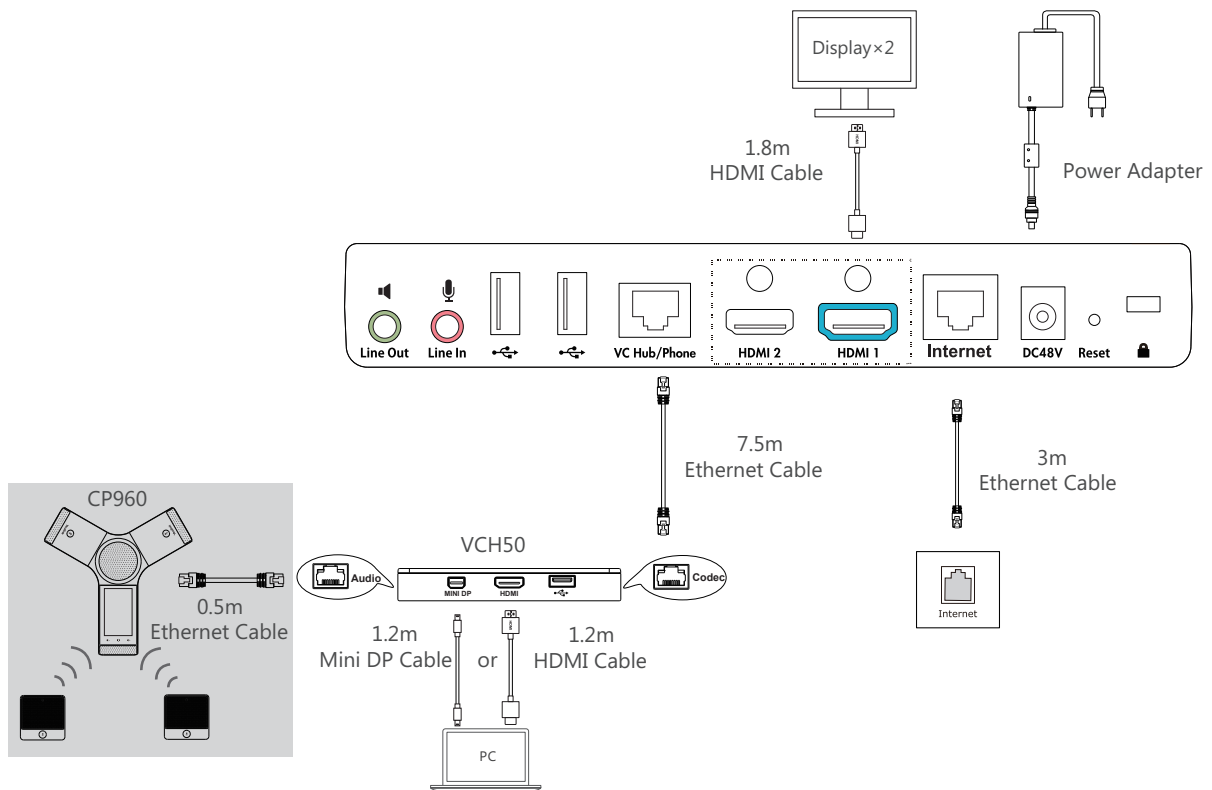


Remote Control and Cable Ties Installation

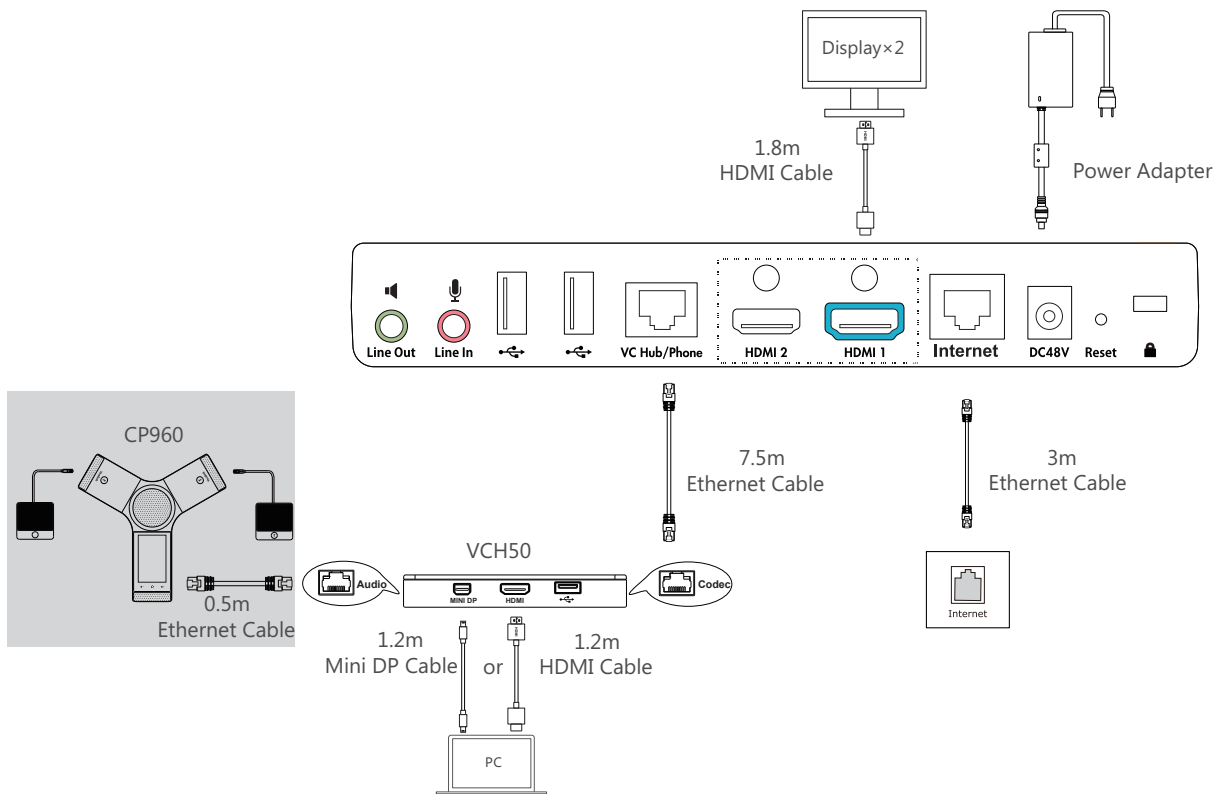


Connections

- If you purchase A package, do the following:



- If you purchase B package, do the following:



💡 Please connect to the HDMI 1 port if you only have one display device.

💡 You can also connect the VC Hub/Phone port on the VC800 codec to the Internet port on CP960 conference phone directly.

Network Deployment

VC800 supports two network deployment methods: Cloud deployment and traditional deployment. You can choose the deployment method according to your need.

● Cloud Deployment

With Cloud service, organizations can communicate using the Cloud platform, so that complex network settings are unnecessary. You can log into Yealink VC Cloud Management Service/Yealink Meeting Server/StarLeaf/Zoom/Pexip/BlueJeans/Mind platform using VC800 video conferencing system. Get account information from your administrator.

Do the following to log into your VC800 via remote control:

- Select **More->Setting->Advanced** (Default Admin Password:0000)->**Video Conference Platform**.
- In the **Cloud Account** field, check the **Enabled** checkbox.
- Select the desired platform from the pull-down list of **Platform Type**.
- Configure the desired platform and log in.

● Traditional Deployment

If you do not log into the Cloud platform, you can choose traditional deployment method to deploy your VC800, and dial the IP address of other device to make a call.

In order to ensure that the VC800 can work properly, please configure it according to the actual situation.

If it is in the head office, please make sure that it is reachable from public network. If it is in the branch office, please use intelligent traversal to deploy it or just follow the same steps as for the head office.

Head Office

If you deploy VC800 in the head office, at least one static public IP address is required in the head office to allow branch offices to connect.

Do one of the following to deploy VC800:

Option1: To deploy the VC800 on a public network, at least one static public IP address is required, you need to assign a static public IP address to the VC800.

Option2: To deploy the VC800 in an Intranet (behind the firewall), you must assign a static private IP address to the VC800. In the meantime, do port mapping on the firewall for VC800.

Configure a Static IP

The following introduces how to configure a static IP address for the VC800.


For example: use the remote control to configure a static IPv4 address to your VC800.

- Select **More->Setting->Advanced** (Default Admin Password:0000)->**Internet Configuration**.
- Select **IPv4** from the pull-down list of **IP Mode**.
- Press ▲ or ▼ to select **IPv4**, and then press (OK).
- Uncheck the **DHCP** checkbox.
- Enter the IP address, subnet mask, gateway and DNS information in corresponding fields.
- Press ▲ or ▼ to select **Save**, and then press (OK) to save the configuration.
- The screen prompts **[Reboot now?]**. Select **OK** to reboot the system.

Configure Port Mapping

If the VC800 is deployed in an Intranet, and you want to solve the interconnection problem by port mapping, you must forward the following ports to the public network on the firewall.

Function	Port	Protocol Type
H.323 signal port	1719-1720	UDP/TCP
Audio & Video media stream port	50000-50499	TCP/UDP
Web management port (optional)	443	TCP
SIP (optional)	5060	TCP/UDP

 It is recommended that you forward the web management port(443/TCP) to the public network, so that the head office can remotely manage the branch office.


Function	Port	Protocol Type
H.323 signal port	1719-1720	UDP/TCP
Audio & Video media stream port	50000-50499	TCP/UDP
SIP (optional)	5060-5061	TCP/UDP

Bandwidth Requirements

- To ensure the performance of video conference, the recommended bandwidth for VC800 is as below:

Video Resolution	Recommended Bandwidth
Full HD 1080P	1.3Mb
People 1080P+Content 1080P	2.6Mb

 For more information of the configurations, contact your system administrator.

 The bandwidth mentioned above is based on two-way conference. Bandwidth in head office should be increased along with the growing number of connected branch offices .

Troubleshooting

- After installation and deployment, you can test the VC800 by dialing the Yealink Demo Room. If you can't dial out successfully, please contact your IT administrator to check the internal network configuration.
- If you do not use Cloud platform and deploy your VC800 in an Intranet, you have configured port mapping on the firewall or gateway, but you find that local system appears black screen and you cannot hear sound when you call Yealink Demo or other systems. The most likely reason is that the firewall or gateway in your environment does not support the H.323 ALG feature. In this situation, please take the following actions so that the NAT feature on the VC800 can solve this problem.

To configure NAT via the remote control:

- Select **More->Setting->Advanced** (Default Admin Password:0000)->**NAT/Firewall**.
- Select **Auto** from the pull-down list of **Type**, the system will obtain public IP address automatically.
- If the system does not obtain a public IP address automatically, select **Manual Settings** from the pull-down list of **Type**, and then enter the public IP address in the **Public IP Address** field.

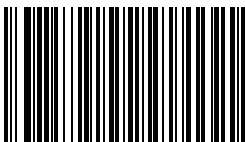
Yealink Test Room IP: 117.28.251.50, 117.28.251.51

About Yealink

Yealink (Stock Code: 300628) is a global leading unified communication (UC) terminal solution provider that primarily offers video conferencing systems and voice communication solutions. Founded in 2001, Yealink leverages its independent research and development and innovation to pursue its core mission: "Easy collaboration, high productivity." The company's high-quality UC terminal solutions enhance the work efficiency and competitive advantages of its customers in over 100 countries. Yealink is the world's second-largest SIP phone provider and is number one in the China market.

Technical Support

Visit Yealink WIKI (<http://support.yealink.com/>) for the latest firmware, guides, FAQ, Product documents, and more. For better service, we sincerely recommend you to use Yealink Ticketing system (<https://ticket.yealink.com>) to submit all your technical issues.



VC800-EN

YEALINK(XIAMEN) NETWORK TECHNOLOGY CO.,LTD.

Web: www.yealink.com | Addr: 309, 3th Floor, No.16, Yun Ding North Road, Huli District, Xiamen City, Fujian, P.R. China

Copyright©2017YEALINK(XIAMEN) NETWORK TECHNOLOGY CO.,LTD. All rights reserved.

