

## Yealink T5 Series Microsoft Skype for Business Edition Release Notes of Version 9

### Table of Contents

<b>Yealink T5 Series Microsoft Skype for Business Edition Release Notes of Version 9</b> .....	<b>1</b>
<b>Yealink T5 Series Microsoft Skype for Business Edition Release Notes of Version 55.9.0.14</b> .....	<b>2</b>
1. Introduction .....	2
2. New Features.....	2
3. Optimization.....	2
4. Bug Fixes .....	2
5. New Features Descriptions.....	2
6. Optimization Descriptions .....	3
<b>Yealink T5 Series Microsoft Skype for Business Edition Release Notes of Version 55.9.0.13</b> .....	<b>4</b>
1. Introduction .....	4
2. New Features.....	4
3. Optimization.....	4
4. Bug Fixes .....	4
5. New Features Descriptions.....	4
<b>Yealink T5 Series Microsoft Skype for Business Edition Release Notes of Version 55.9.0.9</b> .....	<b>6</b>
1. Introduction .....	6
2. New Features.....	6
3. Optimization.....	6
4. Bug Fixes .....	6
5. New Features Descriptions.....	6
6. Optimization Descriptions .....	8
<b>Yealink T58A&amp;T56A Microsoft Skype for Business Edition Release Notes of Version 55.9.0.5</b> .....	<b>9</b>
1. Introduction .....	9
2. New Features.....	9
3. Optimization.....	9
4. Bug Fixes .....	9
5. New Features Descriptions.....	9
6. Configuration Parameters Enhancements.....	16

## Yealink T5 Series Microsoft Skype for Business Edition Release Notes of Version 55.9.0.14

### 1. Introduction

- Firmware Version:  
T55A/T56A/T58A: 55.9.0.13 upgrades to 55.9.0.14
- Applicable Models: T55A, T56A, T58A
- Release Date: Jun 15<sup>th</sup>, 2019.

### 2. New Features

1. Added the feature of Shared Line Appearance (SLA).

### 3. Optimization

1. Optimized the Skype for Business Feature License.

### 4. Bug Fixes

None

### 5. New Features Descriptions

#### 1. Added the feature of Shared Line Appearance (SLA).

**Description:** Shared Line Appearance is a feature in Skype for Business for handling multiple calls on a specific number called a shared number. The system administrator assigns members to a SLA group. When users call the shared number, the calls are not actually received on the shared number, instead they are forwarded to SLA groups members.

Any SLA group member can place, answer, hold, or resume calls on the lines, and all group members can view the status of a call on the shared line on their phones. Each line supports up to 25 call appearances. Only one call at a time can be active on the shared line appearance. If a call is placed to the shared line with an active call in progress, the incoming call is sent to another shared line.

## 6. Optimization Descriptions

### 1. Optimized the Skype for Business Feature License.

**Description:** By default, the phone has a built-in Skype for Business feature license, which allows user to use Yealink phones with Skype for Business features directly.

Any Open SIP build upgrades to Skype for Business build will be required to apply and import the license.

Any Skype for Business will not be allowed to downgrade to the Open SIP from this release. If Skype for Business phones are under temporary license (for demo testing purpose) and want to get back to Open SIP, please contact Yealink support team for technical support for a unlock license.

Once upgraded to the latest Skype for Business, it will not be allowed to downgrade to the previous Skype for Business version.

## Yealink T5 Series Microsoft Skype for Business Edition Release Notes of Version 55.9.0.13

### 1. Introduction

- Firmware Version:  
T55A/T56A/T58A: 55.9.0.9 upgrades to 55.9.0.13
- Applicable Models: T55A, T56A, T58A
- Release Date: May 9<sup>th</sup>, 2019.

### 2. New Features

1. Bundled the 3<sup>rd</sup>-party app ID for applying OAuth 2.0 & 3<sup>rd</sup>-party application with greater security.

### 3. Optimization

None

### 4. Bug Fixes

None

### 5. New Features Descriptions

1. **Bundled the 3<sup>rd</sup>-party app ID for applying OAuth 2.0 & 3<sup>rd</sup>-party application with greater security.**

**Description:** Microsoft recently announced that it will enable third-party applications and use OAuth 2.0 to provide users with greater security. This change is confined to 3PIP certified Skype for Business IP phones and requires the update of Microsoft server synchronization for all 3PIP partners. Yealink released new firmware for its complete range of Skype for Business phones in Mid-May, well in advance of the **January 15, 2020** deadline for Microsoft's global service update. In order to ensure that end users can successfully sign in to the phones in question, administrators must complete the following steps before the deadline.

Admins will be asked to consent one time on behalf of the organization to grant the application the necessary permissions.

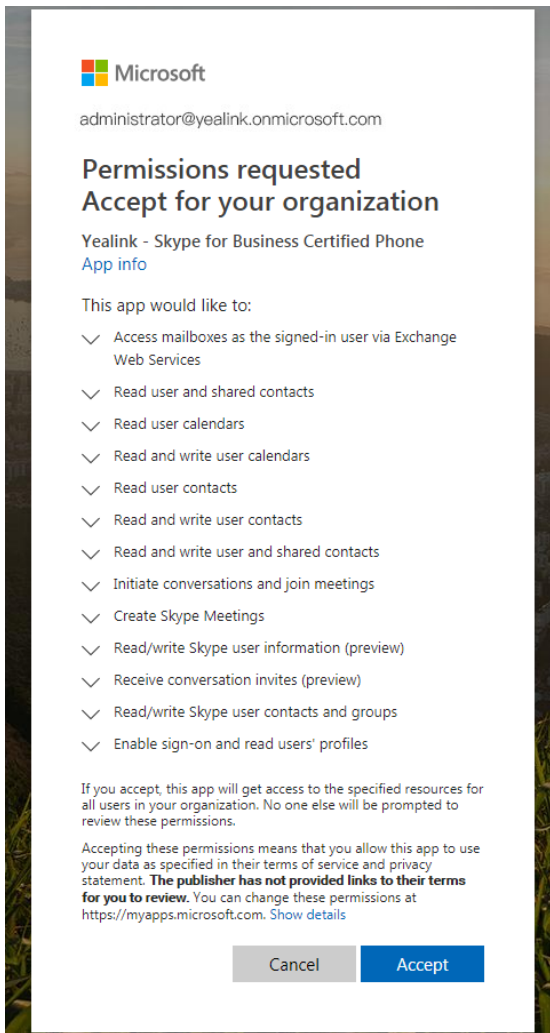
a) URL access:

[https://login.microsoftonline.com/common/adminconsent?client\\_id=f1faadeb-88b3-4852-8138-3b9e23b24619](https://login.microsoftonline.com/common/adminconsent?client_id=f1faadeb-88b3-4852-8138-3b9e23b24619)

b) Sign in using the tenant admin account rather than as a user. Please note that only administrator accounts can grant the relevant permissions. Non-administrator account users will be forwarded to the Need Admin Approval Page.

c) When successful, the Device Login Page will recognize the device as a **Yealink – Skype for Business Certified Phone**.

d) Click **Accept** to grant all the required permissions on the below consent screen from Azure. Then, other users in the organization can sign-in according to the typical Web Sign-in and there will be no need to re-grant any permissions.



For more information, refer to <https://techcommunity.microsoft.com/t5/Skype-for-Business-Blog/OAuth-2-0-and-third-party-application-ID/ba-p/482876>.

## Yealink T5 Series Microsoft Skype for Business Edition Release Notes of Version 55.9.0.9

### 1. Introduction

- Firmware Version:  
T55A/T56A/T58A: 55.9.0.9
- Applicable Models: T55A, T56A, T58A
- Release Date: April 2<sup>nd</sup>, 2019.

### 2. New Features

1. Unified the firmware of T58A, T56A and T55A Skype for Business IP phones.
2. Added the feature that you can use Wi-Fi USB dongle WF50 to connect your phone to available wireless networks on T56A and T55A.

### 3. Optimization

1. Optimized the feature that you should apply for new SfB license on Yealink license management platform: <https://license.yealink.com/>.

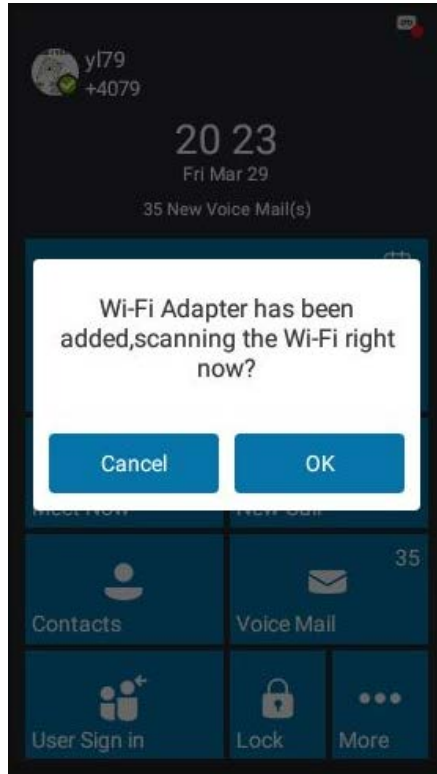
### 4. Bug Fixes

None

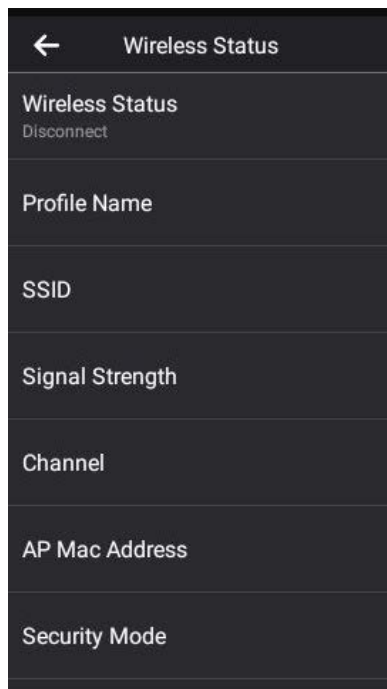
### 5. New Features Descriptions

1. **Added the feature that you can use Wi-Fi USB dongle WF50 to connect your phone to available wireless networks on T56A and T55A.**

**Description:** If you want your phone to connect to the wireless network, you should attach the Wi-Fi USB dongle WF50 into the USB port on the back of the phone first. After WF50 is attached, a message is popped up, then you press OK, the phone will go to the Wi-Fi Settings and the Wi-Fi mode is activated automatically. You can select the desired wireless network and connect.



If the phone is connected to the wired network and the Wi-Fi mode is also activated, the phone will use the wireless network by default. If there is no available wireless network, the phone will use the wired network instead automatically. If the IP phone is connected to a wireless network successfully, you can also view the connected wireless network information on the Wireless Status screen.



## 6. Optimization Descriptions

1. **Optimized the feature that you should apply for new SfB license on Yealink license management platform (<https://license.yealink.com/>).**

**Description:** The new SfB license should be apply on Yealink license management platform (<https://license.yealink.com/>), and the new license is bound with the specific phone model and MAC address. If you have uploaded the license to your phone before, when you upgrade your phone to the latest firmware, the old license will be compatible with the new one. However, if you do not upload the license to the phone before, and you upgrade your phone from SIP version to the SfB version, only when you apply for the license, can your phone work normally.



## Yealink T58A&T56A Microsoft Skype for Business Edition Release Notes of Version 55.9.0.5

### 1. Introduction

- Firmware Version:  
T58A: 55.9.0.2 upgrades to 55.9.0.5  
T56A: 55.9.0.2 upgrades to 55.9.0.5
- Applicable Models: T58A, T56A
- Release Date: Nov 5<sup>th</sup>, 2018.

### 2. New Features

1. Added the feature of Intercom.
2. Added the feature of Bluetooth for T58A Skype for Business phone.
3. Added the feature of Audio Recording.
4. Added the feature of Multicast Paging.
5. Supports EXP50 Expansion Module.
6. Added the feature of Wi-Fi for T58A Skype for Business phone.
7. Added the feature of Music on Hold.
8. Added the feature of Provisioning Methods Priority.
9. Supports USB headset.
10. Added the feature that you can press **Add to SFB** to add the contacts to Skype for Business directory.

### 3. Optimization

None

### 4. Bug Fixes

None

### 5. New Features Descriptions

1. **Added the feature of Intercom.**

**Description:** Intercom allows establishing an audio conversation directly. The phone can answer intercom calls automatically. Intercom calls include outgoing intercom calls and incoming intercom calls, and there are four configuration options for incoming intercom calls: Intercom Allow, Intercom Mute, Intercom Tone and Intercom Barge.

**The parameters in the auto provision template are described as follows:**

*features.intercom.enable =*

*features.intercom.outgoing =*

*features.intercom.allow =*

*features.intercom.barge =*

*features.intercom.mute =*

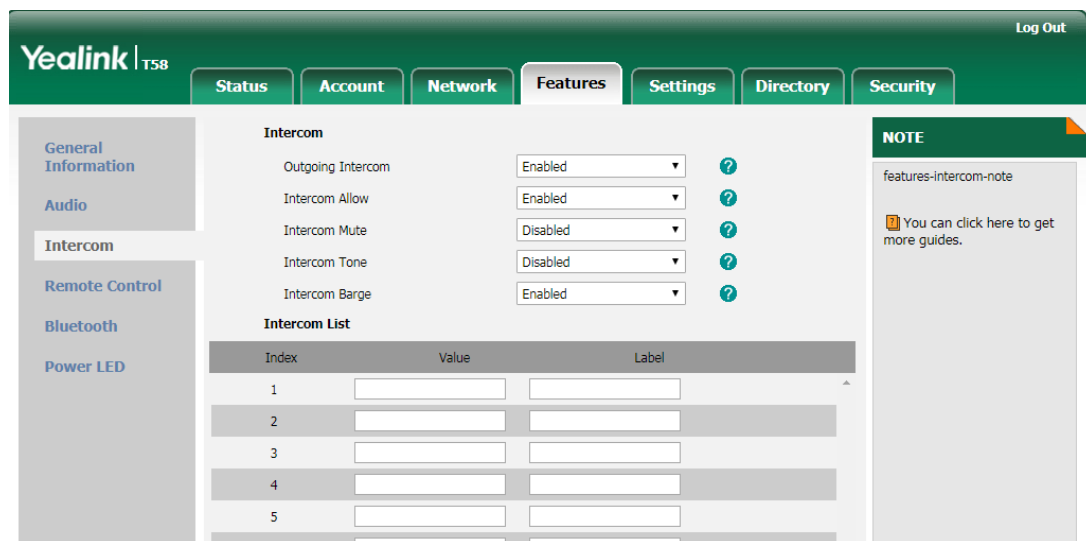
*features.intercom.tone =*

*intercom.x.label =*

*intercom.x.value =*

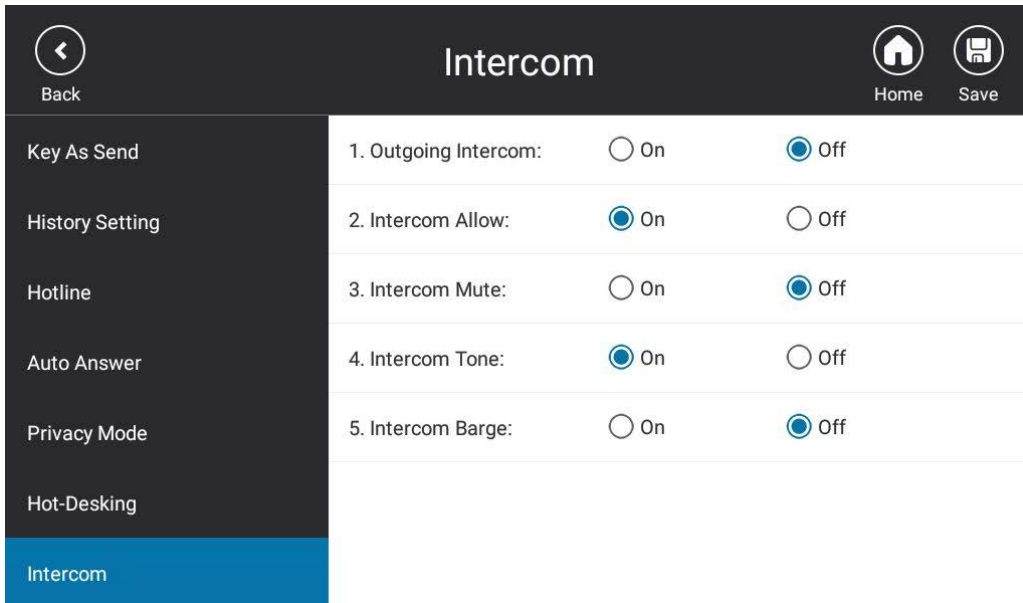
**To configure intercom features via web user interface:**

Click **Features** -> **Intercom**.



**To configure the intercom feature via phone user interface:**

Tap **Menu** -> **Settings** -> **Features** -> **Intercom**.



## 2. Added the feature of Bluetooth for T58A Skype for Business phone.

**Description:** You can use your T58A Skype for Business phone as a Bluetooth speaker for your mobile phone and manage calls for your mobile phone. You can personalize the Bluetooth device name. The pre-configured Bluetooth device name will display in scanning list of other devices. It is helpful for the other Bluetooth devices to identify and pair with your phone.

**The parameters in the auto provision template are described as follows:**

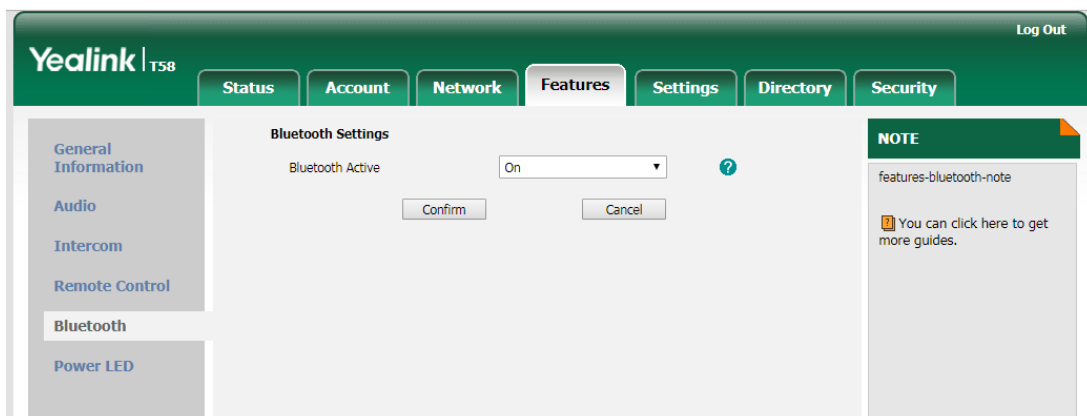
bluetooth.function.enable =

features.bluetooth\_enable =

features.bluetooth\_adapter\_name =

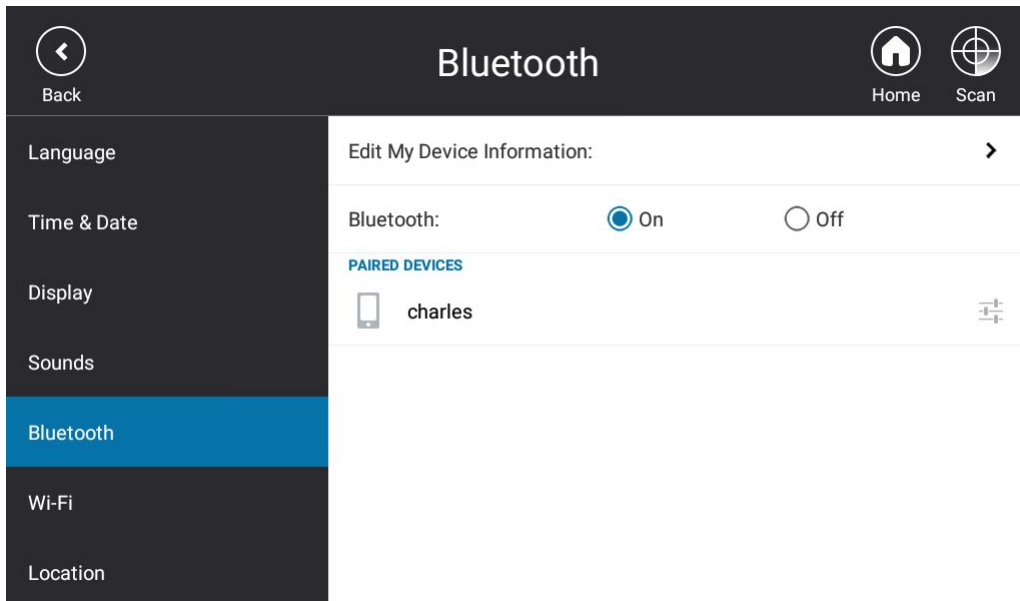
**To active the Bluetooth mode via web user interface:**

Click **Features** -> **Bluetooth**.



**To active the Bluetooth mode via phone user interface:**

Tap **Menu** -> **Setting** -> **Basic** -> **Bluetooth**.



### 3. Added the feature of Audio Recording.

**Description:** Yealink phones support recording during a call. Before recording, ensure that the USB flash drive has been inserted into the USB port of the phone. You need to press the Start REC soft key during a call to record the audio call or conference.

**The parameters in the auto provision template are described as follows:**

*features.usb\_call\_recording.enable =*  
*features.call\_recording.fast\_entrance =*

### 4. Added the feature of Multicast Paging.

**Description:** Multicast paging allows the phone to send/receive Real-time Transport Protocol (RTP) streams to/from the pre-configured multicast address(es) without involving SIP signaling.

**The parameters in the auto provision template are described as follows:**

*multicast.codec =*  
*multicast.paging\_address.X.ip\_address =*  
*multicast.paging\_address.X.label =*  
*multicast.listen\_address.X.ip\_address =*  
*multicast.listen\_address.X.label =*  
*multicast.receive\_priority.enable =*  
*multicast.receive\_priority.priority =*  
*features.paging.enable =*

**To configure sending multicast addresses via web user interface:**

Click **Directory** -> **Multicast IP**.

**Multicast Listening**

Paging Barge: 31

Paging Priority Active: Enabled

IP Address	Listening Address	Label	Channel	priority
1 IP Address			0	1
2 IP Address			0	2
3 IP Address			0	3
4 IP Address			0	4
5 IP Address			0	5
6 IP Address			0	6
7 IP Address			0	7
8 IP Address			0	8
9 IP Address			0	9
10 IP Address			0	10

**Paging List**

Index	Paging Address	Label	Channel
1	224.0.0.1:1024	FAE	0
2			0
3			0
4			0

**To configure paging list via phone user interface:**

Tap **Menu** -> **Setting** -> **Features** -> **Paging List**.

**Paging List**

Back Home Delete All

Call Forward	1. FAE	⋮
Call Waiting	2. (Empty)	✎
<b>Paging List</b>	3. (Empty)	✎
BToE	4. (Empty)	✎
Key As Send	5. (Empty)	✎
History Setting	6. (Empty)	✎
Hotline	7. (Empty)	✎

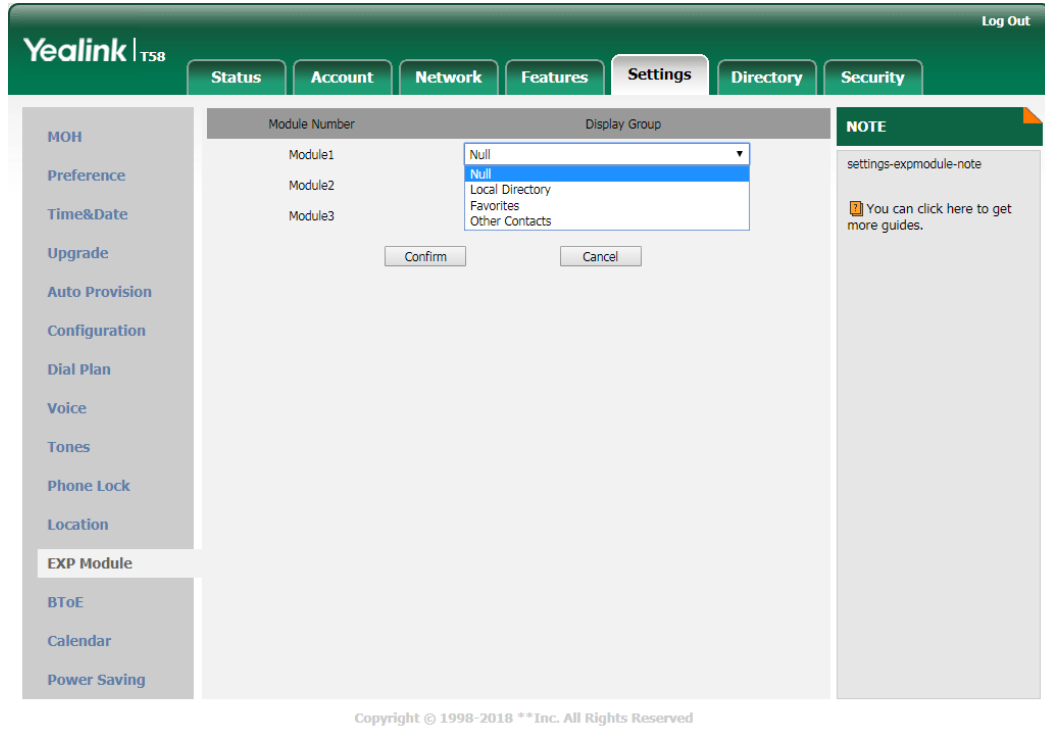
## 5. Supports EXP50 Expansion Module.

**Description:** You can connect an EXP50 to T58A/T56A Skype for Business phones. When your T58A/T56A is registered with a Skype for Business account, you can assign contacts to EXP keys on your EXP50 expansion module, so that you can quickly call

contact by pressing the corresponding EXP key. You can also monitor your Skype for Business contacts' presence status from your expansion module.

**To assign contact group to the EXP50 expansion module via web user interface:**

Click **Settings** -> **EXP Module**.



**6. Added the feature of Wi-Fi for T58A Skype for Business phone.**

**Description:** Wi-Fi feature enables users to connect their phones to the organization's wireless network. The wireless network is more convenient and cost-effective than wired network. When the Wi-Fi feature is enabled, the phone will automatically scan the available wireless networks. All the available wireless networks will display in scanning list on the touch screen. You can store up to 5 frequently-used wireless networks on your phone and specify the priority for them.

**The parameters in the auto provision template are described as follows:**

- static.wifi.enable* =
- static.wifi.x.label* =
- static.wifi.x.ssid* =
- static.wifi.x.security\_mode* =
- static.wifi.x.cipher\_type* =
- static.wifi.x.password* =
- static.wifi.x.priority* =
- static.wifi.x.eap\_user\_name* =

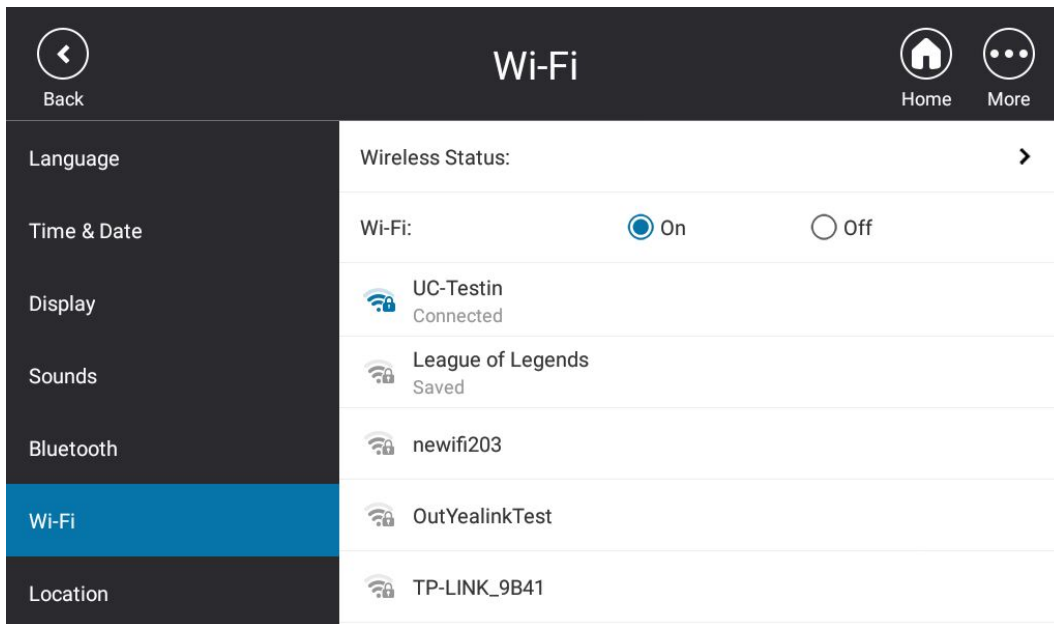
*static.wifi.x.eap\_type =*

*static.wifi.x.eap\_password =*

*wifi.function.enable =*

**To activate the Wi-Fi mode via phone user interface:**

Tap **Menu** -> **Setting** -> **Basic** -> **Wi-Fi**.



**7. Added the feature of Music on Hold.**

**Description:** Music on Hold (MoH) is the business practice of playing recorded music to fill the silence that would be heard by the party who has been placed on hold. When a call is placed on hold, the phone will play a ring tone to the held party. Users can upload a custom music to the phone or use the music received from the Skype for Business server via In-band provisioning method.

**The parameters in the auto provision template are described as follows:**

*sfb.music\_on\_hold.enable =*

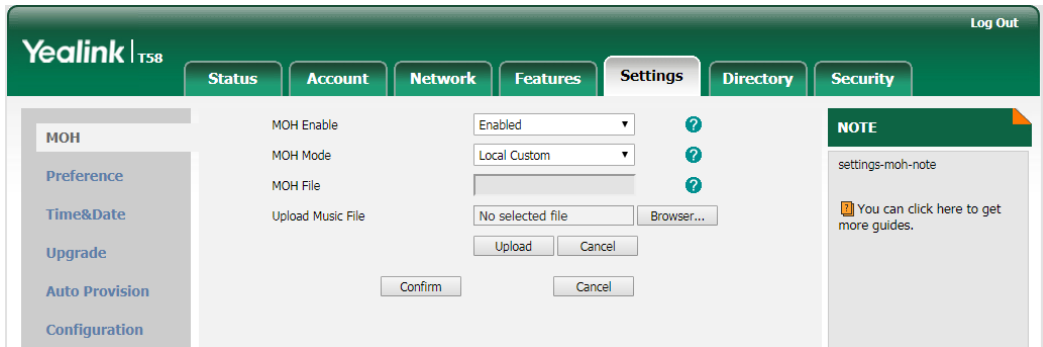
*sfb.music\_on\_hold.mode =*

*sfb.music\_on\_hold.url =*

*sfb.music\_on\_hold.delete =*

**To configure music on hold via web user interface:**

Click **Settings** -> **MOH**.



## 8. Added the feature of Provisioning Methods Priority.

**Description:** By default, different provisioning methods (central provisioning, in-band Provisioning and manual Provisioning) have no priority. That is, the subsequent operations always override previous operations regardless of the provisioning method you are using. If users want to keep the personalized settings, the system administrator can enable the provisioning methods priority to ensure that provision with high priority will not be overwritten by provision with low priority.

**The parameters in the auto provision template are described as follows:**

*static.auto\_provision.custom.protect =*

*static.phone\_setting.receive\_inband.enable =*

## 6. Configuration Parameters Enhancements

Auto Provision Template Flies Change Log							
Firmware Version: [55.9.0.2]-[55.9.0.5]							
Feature	Provisioning syntax Comparison		Permitted Values	Default Value	Action	Description	File
	55.9.0.2	55.9.0.5					
WiFi		wifi.function.enable =	0 or 1	1	Add	Enables or disables the Wi-Fi feature. 0-Disabled 1-Enabled Note: If you change this parameter, the phone will reboot to make the change take effect.	common.cfg
WiFi		static.wifi.enable =	0 or 1	0	Add	It enables or disables the Wi-Fi feature. 0-Disabled	common.cfg



						1-Enabled	
WiFi		static.wifi.x.label =	String within 32 characters	Blank	Add	It configures the profile name of the wireless network X for the IP phone. Note: It works only if the value of the parameter "static.wifi.enable" is set to 1 (Enabled).	common.cfg
WiFi		static.wifi.x.ssid =	String within 32 characters	Blank	Add	It configures the Service Set Identifier (SSID) of the wireless network X. SSID is a unique identifier for accessing wireless access points. Note: It works only if the value of the parameter "static.wifi.enable" is set to 1 (Enabled).	common.cfg
WiFi		static.wifi.x.security_mode =	NONE, WEP, WPA-PSK, WPA2-PSK, WPA-EAP or WPA2-EAP	NONE	Add	It configures the security mode of the wireless network X. Note: It works only if the value of the parameter "static.wifi.enable" is set to 1 (Enabled).	common.cfg
WiFi		static.wifi.x.cipher_type =	NONE, WEP, TKIP, AES or TKIP AES	NONE	Add	It configures the encryption type of the wireless network X. If the value of the parameter "static.wifi.x.security_mode" is set to NONE, the permitted value of this parameter is NONE. If the value of the parameter "static.wifi.x.security_mode" is set to WEP, the permitted value of this parameter is WEP. If the value of the parameter "static.wifi.x.security_mode" is set to other values, the permitted values of this parameter are TKIP, AES or TKIP AES. Note: It works only if the value of the parameter	common.cfg

						"static.wifi.enable" is set to 1 (Enabled).	
WiFi		static.wifi.x.password =	String within 64 characters	Blank	Add	It configures the password of the wireless network X. Note: It works only if the value of the parameter "static.wifi.enable" is set to 1 (Enabled) and "static.wifi.x.security_mode" is set to WEP, WPA-PSK or WPA2-PSK.	common.cfg
WiFi		static.wifi.x.priority =	Integer from 1 to 5	1	Add	It configures the priority for the wireless network X for the IP phone. 5 is the highest priority, 1 is the lowest priority. Note: It works only if the value of the parameter "static.wifi.enable" is set to 1 (Enabled).	common.cfg
WiFi		static.wifi.x.eap_user_name =	String within 32 characters	Blank	Add	It configures the EAP authentication username of the wireless network X. Note: It works only if the value of the parameter "static.wifi.enable" is set to 1 (Enabled), "static.wifi.x.security_mode" is set to WPA-EAP or WPA2-EAP and the value of the parameter "static.wifi.x.eap_type" is set to TTLS or PEAP .	common.cfg
WiFi		static.wifi.x.eap_type =	TTLS, PEAP or TLS	Blank	Add	It configures the EAP authentication mode of the wireless network X. Note: It works only if the value of the parameter "static.wifi.enable" is set to 1 (Enabled) and "static.wifi.x.security_mode" is set to WPA-EAP or WPA2-EAP.	common.cfg
WiFi		static.wifi.x.eap_password =	String within 64 characters	Blank	Add	It configures the EAP authentication password of	common.cfg

						the wireless network X. Note: It works only if the value of the parameter "static.wifi.enable" is set to 1 (Enabled) and "static.wifi.x.security_mode" is set to WPA-EAP or WPA2-EAP.	
Voice Mail		account.1.voice_mail.skip_pin.enable =	0 or 1	1	Add	It enables or disables the IP phone to access voice mail box without entering PIN. 0-Disabled 1-Enabled	mac.cfg
Expansion Module		phone_setting.exp40_led.enable =	0 or 1	1	Add	It enables or disables the EXP key indicator LED on the expansion module to monitor the status of the Skype for Business contacts. 0-Disabled 1-Enabled If it is set to 0 (Disabled), the EXP key LED indicators corresponding to your Skype for Business contacts are off. If it is set to 0 (Enabled), the EXP key LED indicators vary depending on the status of your Skype for Business contacts.	common.cfg
Multicast Paging		multicast.codec =	PCMU, PCMA, G729, G722	G722	Add	It configures the codec for multicast paging. Example: multicast.codec = G722F201	common.cfg
Multicast Paging		multicast.receive_priority.enable =	0 or 1	1	Add	It enables or disables the IP phone to handle the incoming multicast paging calls when there is an active multicast paging call on the IP phone. 0-Disabled 1-Enabled If it is set to 0 (Disabled), the IP phone will ignore the incoming multicast paging calls when there is an active multicast	common.cfg

						<p>paging call on the IP phone.</p> <p>If it is set to 1 (Enabled), the IP phone will receive the incoming multicast paging call with a higher priority and ignore that with a lower priority.</p>	
Multicast Paging		multicast.receive_priority.priority =	Integer from 0 to 10	10	Add	<p>It configures the priority of the voice call (a normal phone call rather than a multicast paging call) in progress.</p> <p>1 is the highest priority, 10 is the lowest priority.</p> <p>0-Disabled, all incoming multicast paging calls will be automatically ignored when a voice call is in progress.</p> <p>1-1 2-2 3-3 ... 10-10</p> <p>If it is set to other values, the IP phone will receive the incoming multicast paging call with a higher or equal priority and ignore that with a lower priority when a voice call is in progress.</p>	common.cfg
Multicast Paging		multicast.listen_address.x.label =	String within 99 characters	Blank	Add	<p>It configures the label to be displayed on the LCD screen when receiving the multicast paging calls.</p> <p>Example: multicast.listen_address.1.label = Paging1</p>	common.cfg
Multicast Paging		multicast.listen_address.x.ip_address =	IP address: port	Blank	Add	<p>It configures the multicast address and port number that the IP phone listens to.</p> <p>Example: multicast.listen_address.1.ip_address = 224.5.6.20:10008</p> <p>Note: The valid multicast IP</p>	common.cfg

						addresses range from 224.0.0.0 to 239.255.255.255.	
Multicast Paging		multicast.paging_address.x.ip_address =	String	Blank	Add	<p>It configures the IP address and port number of the multicast paging group in the paging list. It will be displayed on the LCD screen when placing the multicast paging call.</p> <p>Example: multicast.paging_address.1.ip_address = 224.5.6.20:10008 multicast.paging_address.2.ip_address = 224.1.6.25:1001</p> <p>Note: The valid multicast IP addresses range from 224.0.0.0 to 239.255.255.255.</p>	common.cfg
Multicast Paging		multicast.paging_address.x.label =	String	Blank	Add	<p>It configures the name of the multicast paging group to be displayed in the paging list. It will be displayed on the LCD screen when placing the multicast paging calls.</p> <p>Example: multicast.paging_address.1.label = Product</p>	common.cfg
Multicast Paging		features.paging.enable =	0 or 1	For individual phone: 1 For Common Area Phone: 0	Add	<p>It enables or disables the phone to configure the multicast paging feature.</p> <p>0-Disabled, the phone hides multicast paging configurations. 1-Enabled, the phone displays multicast paging configurations.</p>	common.cfg
MOH		sfb.music_on_hold.enable =	0 or 1	0	Add	<p>It enables or disables the Music On Hold feature when placing an active call on hold.</p> <p>0-Disabled 1-Enabled</p> <p>If it is set to 1 (Enabled), the IP phone will play built-in music when placing an active call on</p>	common.cfg

						hold.	
MOH		sfb.music_on_hold.delete =	URL within 512 characters	Blank	Add	Delete all custom music files. Example: sfb.music_on_hold.delete = http://localhost/all	common. cfg
MOH		sfb.music_on_hold.mode =	0 or 1	1	Add	It configures the source of the music played for the held party. 0-Inband Provision 1-Local Custom If it is set to 1 (Enabled), your phone will play the music received from the Skype for Business Server (via Inband provisioning method) to the held party. If it is set to 0 (Disabled), your phone will play the custom music to the held party. Note: It works only if the value of the parameter "sfb.music_on_hold.enable" is set to 1 (Enabled).	common. cfg
MOH		sfb.music_on_hold.url =	URL within 512 characters	Blank	Add	It configures the access URL of the custom music file. Example: sfb.music_on_hold.url = tftp://192.168.1.100/Customring.wav Note: It works only if the values of the parameter "sfb.music_on_hold.enable" and parameter "sfb.music_on_hold.mode" are set to 1.	common. cfg
Autop Code		static.autoprovision.X.name =	String within 64 characters	Blank	Add	It configures the code name to trigger auto provisioning.	common. cfg
Autop Code		static.autoprovision.X.code =	String	Blank	Add	It configures the activation code to trigger auto provisioning. The activation code can be numeric characters, special	common. cfg

						characters # * or a combination of them. Example: static.autoprovision.1.code = 123 static.autoprovision.2.code = ** static.autoprovision.3.code = *123	
Autop Code		static.autoprovision.X.url =	URL within 511 characters	Blank	Add	It configures the access URL of the provisioning server for the IP phone to perform auto provisioning which is triggered by activation code.	common.cfg
Autop Code		static.autoprovision.X.user =	String within 64 characters	Blank	Add	It configures the user name for authentication during auto provisioning which is triggered by activation code.	common.cfg
Autop Code		static.autoprovision.X.password =	String within 32 characters	Blank	Add	It configures the password for authentication during auto provisioning which is triggered by activation code.	common.cfg
Autop Code		static.autoprovision.X.com_aes =	16 characters	Blank	Add	It configures the plaintext AES key for decrypting the Common CFG file. If it is configured, it has a higher priority than the value configured in the parameter "static.auto_provision.aes_key_16.com".	common.cfg
Autop Code		static.autoprovision.X.mac_aes =	16 characters	Blank	Add	It configures the plaintext AES key for decrypting the MAC-Oriented CFG file. If it is configured, it has a higher priority than the value configured in the parameter "static.auto_provision.aes_key_16.mac".	common.cfg
Bluetooth		bluetooth.function.enable =	0 or 1	1		Enable or disable the Bluetooth feature. 0-Disable 1-Enable	common.cfg

						Note: It is only applicable to T58A/T56A Skype for Business phones. If you change this parameter, the phone will reboot to make the change take effect.	
Bluetooth		features.bluetooth_enable =	0 or 1	0	Add	It triggers the Bluetooth feature to on or off. 0-Off 1-On	common. cfg
Bluetooth		features.bluetooth_adapter_name =	String within 64 characters	For T58A IP phones: The default value is Yealink T58A.	Add	It configures the Bluetooth device name. Note: It works only if the value of the parameter "features.bluetooth_enable" is set to 1 (On).	common. cfg
RingTone		phone_setting.boss_line_ring.enable =	0 or 1	1	Add	It enables or disables the delegate to set a distinct ringtone for assigned bosses' lines. 0-Disabled 1-Enabled If it is set to 0 (Disabled), ringtone for assigned bosses' lines will use the phone's ringtone. The phone's ringtone is configured by the parameter "phone_setting.ring_type". If it is set to 1 (Enabled), the delegate can set a distinct ringtone for assigned bosses' lines. When delegate receives incoming calls from assigned bosses or assigned bosses receive incoming calls, delegate's phone will play the distinct ringtone.	common. cfg
RingTone		phone_setting.delegates_call_ring.enable =	0 or 1	1	Add	It enables or disables the boss to set a distinct ringtone for incoming calls from the assigned delegates' lines.	common. cfg



						<p>0-Disabled 1-Enabled</p> <p>If it is set to 0 (Disabled), incoming calls from the assigned delegates' lines will use the phone's ringtone. The phone's ringtone is configured by the parameter "phone_setting.ring_type".</p> <p>If it is set to 1 (Enabled), the boss can set a distinct ringtone for incoming calls from the assigned delegates' lines.</p>	
RingTone	account.1.ringtone.ring_type =		<p>Common, Ring1.wav, Ring2.wav, ..... Ring8.wav, Silent.wav, Splash.wav, or custom ring tone name (e.g., Customring.wav)</p>	Common	delete	<p>It configures a ring tone for account 1.</p> <p>Example: account.1.ringtone.ring_type = Ring3.wav</p> <p>It means configuring Ring3.wav for account1.</p> <p>account.1.ringtone.ring_type = Common</p> <p>It means account1 will use the ring tone selected for the IP phone configured by the parameter "phone_setting.ring_type".</p>	mac.cfg
Intercom		features.intercom.enable =	0 or 1	1	Add	<p>It enables or disables the phone to display intercom configurations.</p> <p>0-Disabled 1-Enabled</p>	common.cfg
Intercom		features.intercom.outgoing =	0 or 1	0	Add	<p>It enables or disables the IP phone to place an outgoing intercom call from the intercom list.</p> <p>0-Disabled 1-Enabled</p> <p>Note: It works only if the value of parameter "features.intercom.enable" is set to 1 (Enabled).</p>	common.cfg

Intercom		intercom.x.label =	string	Blank	Add	It configures the label displayed on the intercom list. Example: intercom1.label = test Note: It works only if the values of parameters "features.intercom.enable" and "features.intercom.outgoing" are set to 1 (Enabled).	common. cfg
Intercom		intercom.x.value =	string	Blank	Add	It configures the intercom number displayed on the intercom list. Example: intercom1.value = 4039 Note: It works only if the values of parameters "features.intercom.enable" and "features.intercom.outgoing" are set to 1 (Enabled).	common. cfg
Intercom		features.intercom.allow =	0 or 1	1	Add	It enables or disables the IP phone to answer an incoming intercom call. 0-Disabled, the IP phone will handle an incoming intercom call like a normal incoming call. 1-Enabled, the IP phone will automatically answer an incoming intercom call.	common. cfg
Intercom		features.intercom.barge =	0 or 1	0	Add	It enables or disables the IP phone to answer an incoming intercom call while there is already an active call on the IP phone. 0-Disabled, the IP phone will handle an incoming intercom call like a normal incoming call while there is already an active call on the IP phone. 1-Enabled, the IP phone will automatically answer the intercom call while there is already an active call on the IP phone and place the active call	common. cfg

						<p>on hold.</p> <p>Note: It works only if the values of parameters "features.intercom.allow" and "call_waiting.enable" are set to 1 (Enabled) and the value of the parameters "phone_setting.call_appearance.calls_per_linekey" is greater than 1.</p>	
Intercom		features.intercom.mute =	0 or 1	0	Add	<p>It enables or disables the IP phone to mute the microphone when answering an intercom call.</p> <p>0-Disabled 1-Enabled, the microphone is muted for intercom calls, and then the other party cannot hear you.</p> <p>Note: It works only if the values of parameters "features.intercom.allow" and "features.allow_mute" are set to 1 (Enabled).</p>	common.cfg
Intercom		features.intercom.tone =	0 or 1	1	Add	<p>It enables or disables the IP phone to play a warning tone when answering an intercom call.</p> <p>0-Disabled 1-Enabled</p> <p>Note: It works only if the value of the parameter "features.intercom.allow" is set to 1 (Enabled).</p>	common.cfg
Auto Provision		static.phone_setting.receive_inband.enable =	0 or 1	1	Add	<p>It enables or disables the phone to accept the in-band provisioning device settings from the Skype for Business server.</p> <p>0-Disabled 1-Enabled</p>	common.cfg
Auto Provision		static.auto_provision.custom	0 or 1	0	Add	<p>It enables or disables the</p>	common.cfg

		m.protect =				<p>provisioning methods priority. 0-Disabled, different provisioning methods (central provisioning, in-band Provisioning and manual Provisioning) have no priority. The subsequent operations always override previous operations regardless of the provisioning method you are using.</p> <p>1-Enabled, different provisioning methods have priority (phone/web user interface&gt;in-band provisioning&gt;central provisioning&gt;factory defaults). Provision with high priority will not be overwritten by provision with low priority.</p>	
USB Record		features.usb_c all_recording. enable =	0 or 1	0	Add	<p>It enables or disables the call recording (using a USB flash drive) feature for the phone.</p> <p>0-Disabled</p> <p>1-Enabled, you can record the active audio call for the phone by pressing the Start REC soft key, and the recorded calls will be saved to the USB flash drive.</p>	common. cfg
USB Record		features.call_r ecording.fast_ entrance =	0 or 1	0	Add	<p>It enables or disables the phone to display a Recording menu on the idle screen.</p> <p>0-Disabled</p> <p>1-Enabled</p>	common. cfg
RPS		static.auto_pr ovision.rps_hi ghest_priority. enable =	0 or 1	0	Add	<p>It enables or disables the Redirection and Provisioning Server (RPS) method to be the highest priority when provisioning the Skype for Business phone automatically.</p> <p>0- the lowest priority</p> <p>1-the highest priority</p>	common. cfg

