

Yealink Microsoft Skype for Business Edition IP Phones

Release Notes of Version 9

Table of Contents

Yealink Microsoft Skype for Business Edition IP Phones Release Notes of Version 9	1
Yealink Microsoft Skype for Business Edition IP Phones Release Notes of Version 66.9.0.80	3
1. Introduction	3
2. New Features	3
3. Optimization	3
4. Bug Fixes	3
5. Optimization Descriptions	3
Yealink Microsoft Skype for Business Edition IP Phones Release Notes of Version 66.9.0.78	5
1. Introduction	5
2. New Features	5
3. Optimization	5
4. Bug Fixes	5
5. New Features Descriptions	6
Yealink Microsoft Skype for Business Edition IP Phones Release Notes of Version 66.9.0.45	9
1. Introduction	9
2. New Features	9
3. Optimization	9
4. Configuration Parameters Enhancements	9
Yealink Microsoft Skype for Business Edition IP Phones Release Notes of Version 66.9.0.42	14
1. Introduction	14
2. New Features	14
3. Optimization	14
4. Bug Fixes	15
5. New Features Descriptions	15
6. Optimization Description	17
7. Configuration Parameters Enhancements	19
Yealink Microsoft Skype for Business Edition IP Phones Release Notes of Version 66.9.0.25	24
1. Introduction	24
2. New Features	24
3. Optimization	24
4. Bug Fixes	25
5. New Features Descriptions	25
6. Optimization Descriptions	30

7.	Configuration Parameters Enhancements.....	31
8.	Default Value Setting Changes.....	39
Yealink Microsoft Skype for Business Edition IP Phones Release Notes of Version 66.9.0.23		41
1.	Introduction	41
2.	New Features.....	41
3.	Optimization.....	41
4.	Bug Fixes	41
5.	New Features Descriptions	41
6.	Configuration Parameters Enhancements.....	42
Yealink Microsoft Skype for Business Edition IP Phones Release Notes of Version 66.9.0.5.....		46
1.	Introduction	46
2.	New Features.....	46
3.	Optimization.....	46
4.	Bug Fixes	46
5.	New Features Descriptions	46
7.	Optimization Descriptions	51
8.	Configuration Parameters Enhancements.....	53

Yealink Microsoft Skype for Business Edition IP Phones

Release Notes of Version 66.9.0.80

1. Introduction

- Firmware Version:
T41S/T42S/T46S/T48S: 66.9.0.78 upgrades to 66.9.0.80
- Applicable Models: T41S, T42S, T46S, T48S
- Release Date: Jun 15th, 2019.

2. New Features

None

3. Optimization

1. Optimized the Skype for Business Feature License.

4. Bug Fixes

None

5. Optimization Descriptions

1. Optimized the Skype for Business Feature License.

Description: By default, the phone has a built-in Skype for Business feature license, which allows user to use Yealink phones with Skype for Business features directly. Any Open SIP build upgrades to Skype for Business build will be required to apply and import the license.

Any Skype for Business will not be allowed to downgrade to the Open SIP from this release. If Skype for Business phones are under temporary license (for demo testing purpose) and want to get back to Open SIP, please contact Yealink support team for technical support for a unlock license.

Once upgraded to the latest Skype for Business, it will not be allowed to downgrade to

the previous Skype for Business version.

Yealink Microsoft Skype for Business Edition IP Phones

Release Notes of Version 66.9.0.78

1. Introduction

- Firmware Version:
T41S/T42S/T46S/T48S: 66.9.0.45 upgrades to 66.9.0.78
- Applicable Models: T41S, T42S, T46S, T48S
- Release Date: May 15th, 2019.

2. New Features

1. Bundled the 3rd-party app ID for applying OAuth 2.0 & 3rd-party application with greater security.
2. Added the feature that you can customize the specific hostname of SfB phones via auto provisioning.
3. Added the feature that you can access Status/Features/Basic page without admin password.
4. Added the feature that you can sign into a common area phone without PIN.
5. Added the time zone of South Africa.
6. Added the feature that the entrance of PIN sign-in can be found after the parameter "sfb.cert_service.url" is configured.
7. Added the feature of displaying detailed presence info on the Favorites page.
8. Supported the feature of generating Certificate Signing Request file on the phone.
9. Added the feature that you can modify the location via auto provisioning.
10. Supported the USB Wi-Fi dongle WF50.
11. Supported Arabic keyboard

3. Optimization

None

4. Bug Fixes

1. Fixed the issue that the color ring back tone may be mixed up with the ring tone during an outgoing call.
2. Fixed the issue that 802.1 may fail to authorize during the multi-auth.
3. Fixed the issue that the power LED indicator cannot work normally when the phone

receives a voice mail.

4. Fixed the issue that T48S may not obtain the correct time zone.
5. Fixed the issue that the authorization information of the configuration "firmware.url =" may be printed in the log file.
6. Fixed the issue that the information may lose the QoE package on Yealink Device Management Platform.
7. Fixed the issue that the output volume of MOH is too loud.

5. New Features Descriptions

1. Bundled the 3rd-party app ID for applying OAuth 2.0 & 3rd-party application with greater security.

Description: Microsoft recently announced that it will enable third-party applications and use OAuth 2.0 to provide users with greater security. This change is confined to 3PIP certified Skype for Business IP phones and requires the update of Microsoft server synchronization for all 3PIP partners. Yealink released new firmware for its complete range of Skype for Business phones in Mid-May, well in advance of the **January 15, 2020** deadline for Microsoft's global service update. In order to ensure that end users can successfully sign in to the phones in question, administrators must complete the following steps before the deadline.

Admins will be asked to consent one time on behalf of the organization to grant the application the necessary permissions.

a) URL access:

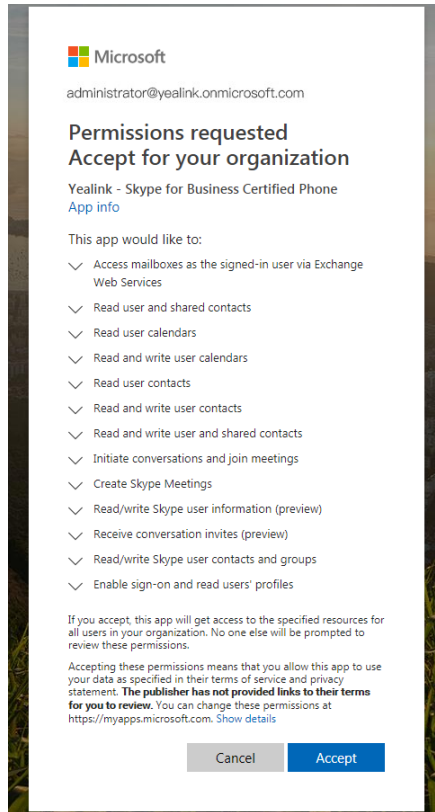
https://login.microsoftonline.com/common/adminconsent?client_id=f1faadeb-88b3-4852-8138-3b9e23b24619

b) Sign-in using the tenant admin account rather than as a user. Please note that only administrator accounts can grant the relevant permissions. Non-administrator account users will be forwarded to the Need Admin Approval Page.

c) When successful, the Device Login Page will recognize the device as a **Yealink – Skype for Business Certified Phone**.

d) Click **Accept** to grant all the required permissions on the below consent screen from Azure. Then, other users in the organization can sign-in according to the typical Web Sign-in and there will be no need to re-grant any permissions.

For more information, refer to <https://techcommunity.microsoft.com/t5/Skype-for-Business-Blog/OAuth-2-0-and-third-party-application-ID/ba-p/482876>.



2. Added the feature that you can customize the specific hostname of SfB phones via auto provisioning.

Description: You can modify the hostname of the devices with MAC addresses, vendor name, version number and device name.

The parameters in the auto provision template are described as follows:

network.dhcp_host_name =

3. Added the feature that you can access Status/Features/Basic page without admin password.

Description: Sometimes the users need to check the IP address of a common area phone but the phone will ask for the credential of admins, now you can remove authentication requirements via auto provisioning.

The parameters in the auto provision template are described as follows:

phone_setting.cap_status_lock.enable =

phone_setting.cap_features_lock.enable=

phone_setting.cap_basic_lock.enable=

4. Added the feature that you can sign into a common area phone without PIN.

Description: If you sign into a common area phone, you will be required to set up an

admin password, now you can remove this procedure via auto provisioning.

The parameters in the auto provision template are described as follows:

features.cap_set_pin.enable =

- 5. Added the feature that the entrance of PIN sign-in can be displayed after the parameter "sfb.cert_service.url" is configured.**

Description: If the users manually import the certificates via the configuration "sfb.cert_service.url", the phone will display the entrance of PIN sign-in although there's no DHCP option 43 configured in the environment.

The parameters in the auto provision template are described as follows:

sfb.cert_service.url =

- 6. Added the feature of displaying detailed presence info on the Favorites page.**

Description: If the user want to view the detailed presence on the Favorites page, they can configure it via auto provisioning to make it be displayed in text format.

The parameters in the auto provision template are described as follows:

features.favorites_show_presence_text.enable =

- 7. Supported the feature of generating Certificate Signing Request file on the phone.**

Description: The users can generate the CSR files and private keys on the phone, also they can trigger the generation via website and auto provisioning.

The parameters in the auto provision template are described as follows:

security.csr.country =

security.csr.state =

security.csr.locality =

security.csr.organization =

security.csr.organization_unit =

security.csr.common_name =

security.csr.email_address =

- 8. Added the feature of disabling the modification of location via auto provision.**

Description: The administrator can prevent the users to modify the E911 location on the phone.

The parameters in the auto provision template are described as follows:

phone_setting.e911.edit_location_information.enable =

Yealink Microsoft Skype for Business Edition IP Phones

Release Notes of Version 66.9.0.45

1. Introduction

- Firmware Version:
T41S/T42S/T46S/T48S: 66.9.0.42 upgrades to 66.9.0.45
- Applicable Models: T41S, T42S, T46S, T48S
- Release Date: Jun 14th, 2018.

2. New Features

1. Supported Yealink Device Management Platform.

3. Optimization

None

4. Configuration Parameters Enhancements

Auto Provision Template Flies Change Log							
Firmware Version: [66.9.0.42]-[66.9.0.45]							
Feature	Provisioning syntax Comparison		Permitted Values	Default Value	Action	Description	File
	66.9.0.42	66.9.0.45					
Account	static.account.1.sign_in.server_address =	static.account.sfb.1.server =	String within 128 characters	Blank	Change	It configures the sign-in address for the User Sign-in method. The value format is username@domain.com. Example: static.account.1.sign_in.server_address = 2216@yealinkuc.com	mac.cfg
Account	static.account	static.account.	String within	Blank	Change	It configures the user name for	mac.cfg

	nt.1.sign_in. user_name =	sfb.1.user_name =	128 characters			the User Sign-in method. The value format is username@domain.com or username@domain, domain.com\username or domain\username. Example: static.account.1.sign_in.user_name= 2216@yealinkuc.com	
Account	static.account. nt.1.sign_in. password =	static.account. sfb.1.password =	String within 128 characters	Blank	Change	It configures the password for the User Sign-in method.	mac.cfg
Account	static.account. nt.1.sign_in. pin_number =	static.account. sfb.1.pin_number =	String within 99 characters	Blank	Change	It configures the IP phone's extension for the PIN Authentication method.	mac.cfg
Account	static.account. nt.1.sign_in. pin_password =	static.account. sfb.1.pin_password =	String within 99 characters	Blank	Change	It configures the PIN for the PIN Authentication method.	mac.cfg
Inband Provisioning	account.1.auth_method =	account.sfb.1. auth_method =	0, 1, 2, 4 or 8	2	Change	It configures the login authentication method. 0-enabled all supportive authentication method 1-org-id authentication 2-OAuth authentication 4-NTLM authentication 8-device pairing authentication	mac.cfg
Exchange Account	static.account. nt.1.ews.auth_address =	static.account. sfb.1.ews.auth_address =	String within 128 characters	Blank	Change	It configures the Exchange address for accessing the Microsoft Exchange Server. Example: static.account.1.ews.auth_address = yl39@redmond.yealinksf.com	mac.cfg
Exchange Account	static.account. nt.1.ews.auth_user =	static.account. sfb.1.ews.auth_user =	String within 128 characters	Blank	Change	It configures the user name for accessing the Microsoft Exchange Server. Example:	mac.cfg

						static.account.1.ews.auth_user = yl39@yealinksfb.com	
Exchange Account	static.account.1.ews.auth_pwd =	static.account.sfb.1.ews.auth_pwd =	String within 128 characters	Blank	Change	It configures the password for accessing the Microsoft Exchange Server.	mac.cfg
Device Management Platform		static.dm.server.address =	String	Blank	Add	It configures the server address of the Device Management Platform. After the phone connects to the platform, you can manage your phone using Device Management Platform.	common.cfg
Device Management Platform		static.dm.server.port =	Integer from 0 to 65535	443	Add	It configures the port of the Device Management Platform.	common.cfg
Device Management Platform		static.dm.qoe_report.enable =	0 or 1	1	Add	It enables or disables the phone to send Quality of Experience (QoE) metrics to the Device Management Platform. 0-Disabled 1-Enabled	common.cfg
Device Management Platform		static.dm.call_record.upload.enable =	0 or 1	0	Add	It enables or disables the phone to send record file to the Device Management Platform. 0-Disabled 1-Enabled	common.cfg
Calling		features.skip_pstn_display_name =	0 or 1	0	Add	It enables or disables the phone to clear the caller name carried in the call protocol for an incoming PSTN call. This works only when the caller name is same as the PSTN number. 1-Enabled, the phone displays the caller using locally stored caller name. 0-Disabled, the phone displays the caller using the caller name that carried in the incoming call protocol.	common.cfg

Calling		sfb.save_ext_number.enable =	0 or 1	0	Add	<p>It enables or disables the phone to analyze the extension number when the format of called number is xxx;ext=xx. As a result, the phone will find the name based on the analyzed results, and then display the called name when places a call.</p> <p>1-Enabled, the phone analyzes the full called number (xxx;ext=xx) to find the name associated with it, and then displays the called name when places a call.</p> <p>0-Disabled, the phone ignores the extension number when looking for the name associated with it.</p> <p>For example: the phone has a contact whose number is 17144911500;ext=9255, and whose name is Jack. When you dial this number, your phone displays that you are calling Jack. If you disable this parameter, your phone displays that you are calling 17144911500.</p>	common. cfg
Calling		phone_setting.search_key_trim_number_flag =	0 or 1	1	Add	<p>It enables or disables the phone to analyze the extension number when the format of called number is xxx;ext=xx. The phone will find the name associated with the called number, and then display the called name when places a call.</p> <p>1- Enabled, the phone searches the caller number with a prefix "+", and displays the caller name associated with the full caller number.</p> <p>2- Disabled, the phone ignores</p>	common. cfg

						<p>the prefix "+", and only displays the caller name associated with the caller number.</p> <p>For example, the phone has a contact whose number is +33 6 66 66 66 66, and whose name is Jack. When you receive a call from this number, your phone displays that the caller is Jack. If you disable this parameter, your phone displays that the caller is 33 6 66 66 66 66.</p>	
Log		static.auto_provision.local_log.backup.http_method =	1 or 2	2	Add	<p>It configures the way that how the phone uploads the local log files to a desired server.</p> <p>1-POST 2-PUT</p>	common.cfg

Yealink Microsoft Skype for Business Edition IP Phones

Release Notes of Version 66.9.0.42

1. Introduction

- Firmware Version:
T41S/T42S/T46S/T48S: 66.9.0.25 upgrades to 66.9.0.42
- Applicable Models: T41S, T42S, T46S, T48S
- Release Date: May 2nd, 2018.

2. New Features

1. Added the feature that Paging and Intercom feature are still available during the call on T48S/T46S.
2. Added the feature of Multi-factor Authentication.
3. Added the feature that if you pair your phone with your Skype for Business client via BToE, you can pass Exchange authentication on your Skype for Business client to access features that associated with the Microsoft Exchange Server (history records, voice mail and calendars).
4. Added the feature of Web Sign-In method in the web user interface.
5. Added the feature of CAP Provisioning Sign-in Method in the web user interface.
6. Added a Home button on T48S.
7. Added the feature that you can use on-screen keyboard when setting Location information, editing or adding local contact/Intercom list/Paging list, and setting Wi-Fi, etc.
8. Added the feature of Exporting the Log Files to the PC which is paired with your phone via BToE.
9. Added the feature of Exporting the Log Files to a USB Flash Drive.

3. Optimization

1. Optimized the feature that Features menu, Basic menu and Advanced menu are all categorized under the directory of Setting.
2. Optimized the feature of Showing Full Name.
3. Optimized the feature of Log Files.
4. Optimized the user interface for you to choose which method to sign into Skype for Business.

4. Bug Fixes

None

5. New Features Descriptions

1. Added the feature of Multi-factor Authentication.

Description: For account security, your system administrator may enable multi-factor authentication (MFA) feature for your online account. In this case, you need to pass a 2-step verification at the initial sign-in. It means that you should sign in with your password and a verification sent to your phone.

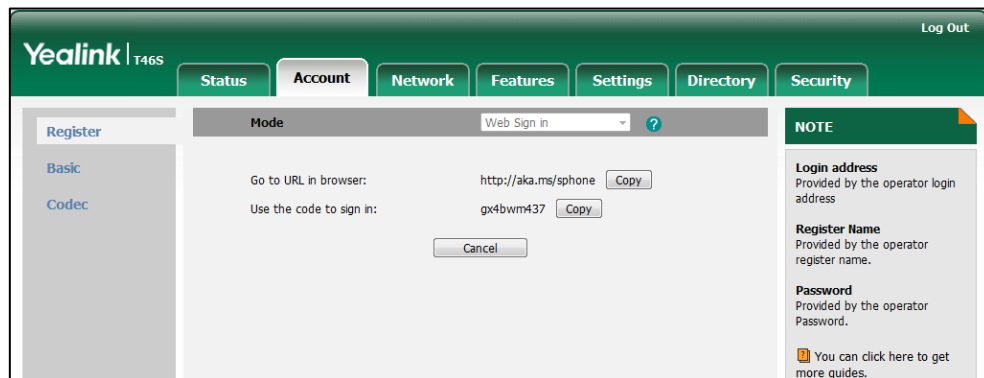
To use MFA feature, you should bind your mobile phone with online account first.

2. Added the feature of Web Sign-In method in the web user interface.

Description: You can sign into the Skype for Business server via web user interface using Web Sign-In method. The URL and pairing code will be displayed, you can click to copy easily.

To sign into the Skype for Business server using Web Sign-In method via web user interface:

Click **Account** -> **Register**.

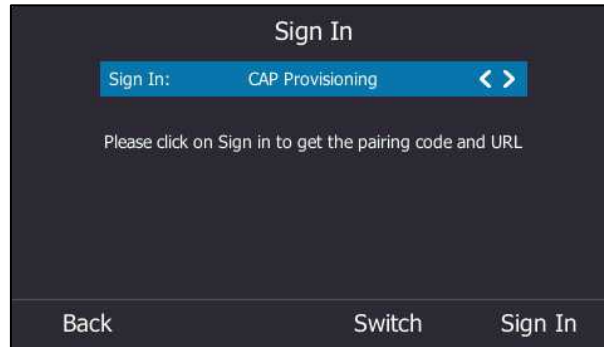


3. Added the feature of CAP Provisioning Sign-in Method in the web user interface.

Description: If you are the person who is given permission to provision CAP accounts, you can use a web browser to provision numerous CAPs quickly.

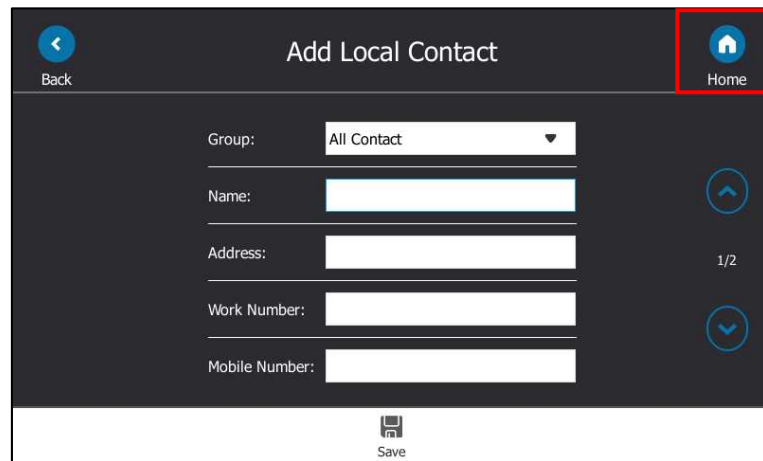
To sign into a CAP using the CAP Provisioning method via phone user interface:

Press the **Sign In** soft key.



4. Added a Home button on T48S.

Description: You can go back to Idle screen quickly by tapping Home button. But you cannot use Home button when you are during the call.



5. Added the feature of Exporting the Log Files to the PC which is paired with your phone via BToE.

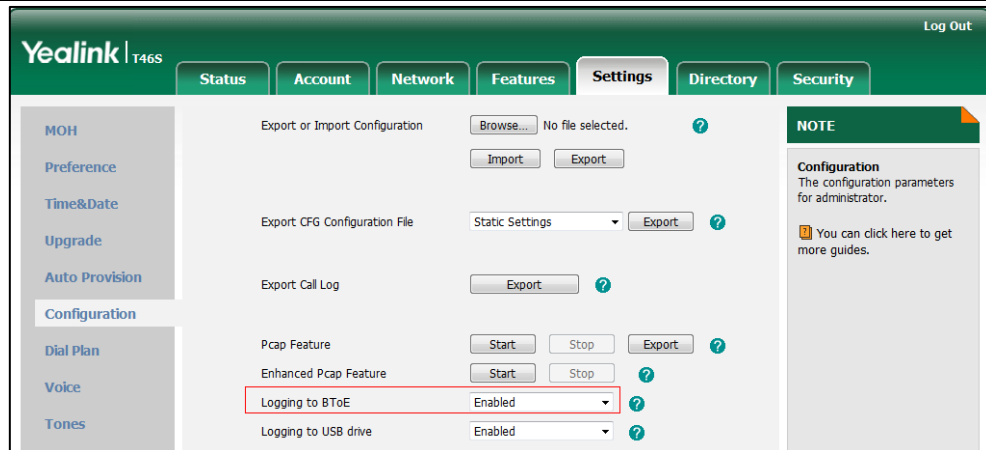
Description: You can upload your syslog file to the paired computer instead of the syslog server. Make sure your phone pairs with your computer using the BToE. The phone will automatically adjust the syslog level to the debug level and record the complete syslog.

The parameters in the auto provision template are described as follows:

static.phone_setting.logging_to_btoe.enable =

To enable logging to BToE feature via web user interface:

Click **Settings** -> **Configuration**.



6. Added the feature of Exporting the Log Files to a USB Flash Drive.

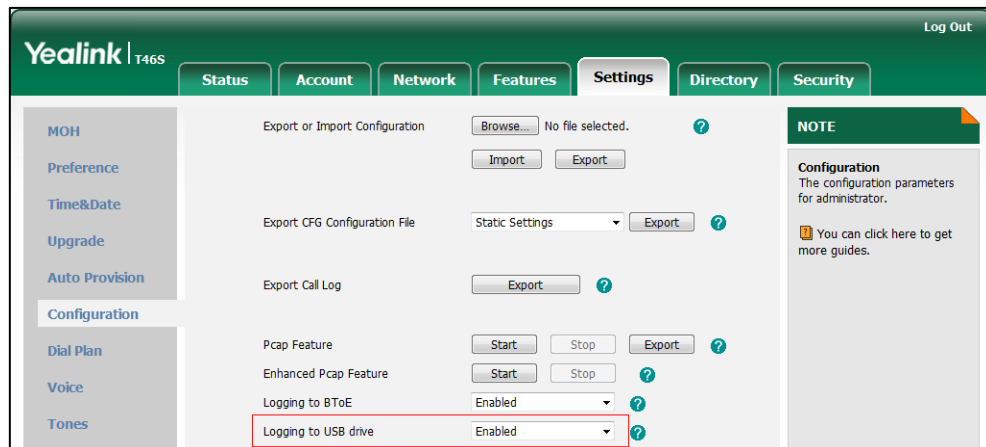
Description: You can upload your local log to the connected USB flash drive instead of your phone flash. The phone will automatically adjust the log level to the debug level and record the complete log.

The parameters in the auto provision template are described as follows:

static.phone_setting.logging_to_usb_drive.enable =

To enable logging to USB flash drive feature via web user interface:

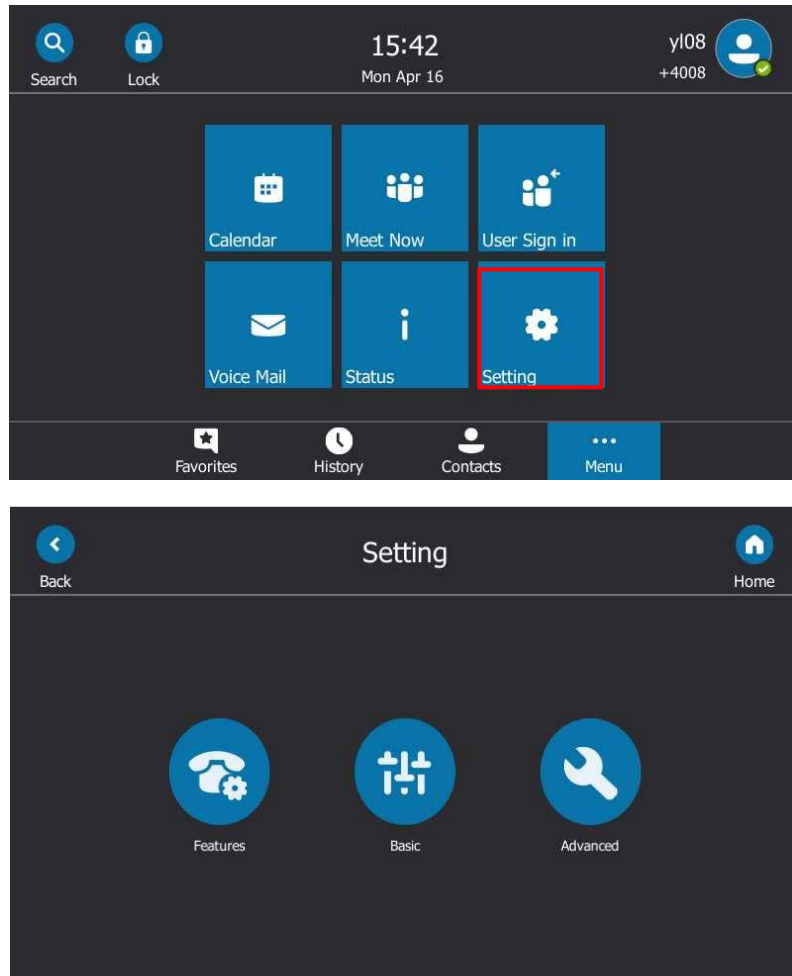
Click **Settings** -> **Configuration**.



6. Optimization Description

1. Optimized the feature that Features menu, Basic menu and Advanced menu are all categorized under the directory of Setting.

Description: Tap Menu and then Setting to access Features menu, Basic menu or Advanced menu.



2. Optimized the feature of Showing Full Name.

Description: You can configure how to show full name on T48S/T46S Skype for Business phones with the configuration parameter.

The parameters in the auto provision template are described as follows:

phone_setting.name_full_display.mode =

3. Optimized the feature of Log Files.

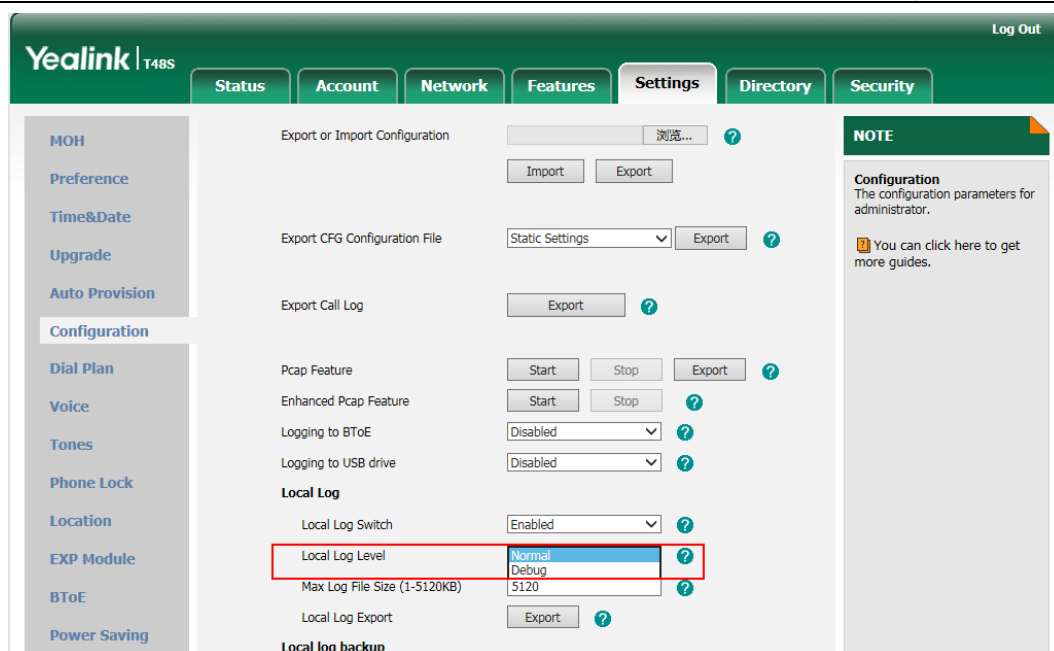
Description: You can configure the severity level, Normal or Debug, of the logs to be reported to the sys.log file.

The parameters in the auto provision template are described as follows:

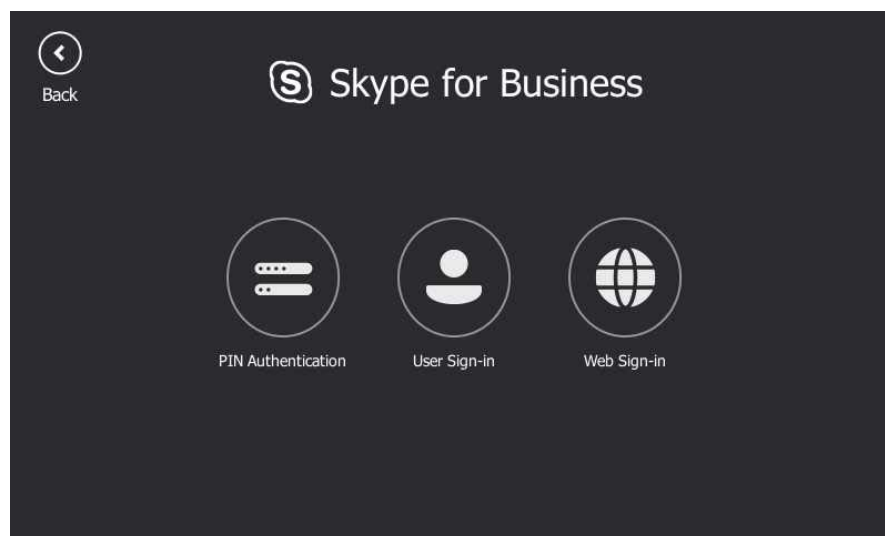
static.local_log.level =

To configure the severity level of the logs via web user interface:

Click **Settings** -> **Configuration** -> **Local Log Level**.



- Optimized the user interface for you to choose which method to sign into Skype for Business.



7. Configuration Parameters Enhancements

Auto Provision Template Flies Change Log						
Firmware Version: [66.9.0.25]-[66.9.0.42]						
Feature	Provisioning syntax Comparison		Permitted Values	Default Value	Action	Description
	66.9.0.25	66.9.0.42				

Exchange Account		phone_setting.ews_auth_popup.enable =	0 or 1	1	Add	It enables or disables the phone to pop up a reminder about Exchange authentication failure. 0-Disabled 1-Enabled	common.cfg
Exchange Account		exchange.connect_keepalive.enable =	0 or 1	1	Add	It enables or disables the phone to request a persistent connection with the Exchange server. 0-Disabled, the phone needs repeat the connection establishment and handshake process. 1-Enabled, the phone will not release resources after requesting a connection with the the Exchange server.	common.cfg
UI		phone_setting.name_full_display.mode =	0 , 1 or 2	0	Add	It configures the display mode of the contacts' names. 0-Off, the phone does not extend the display length of the contacts' names. 1-On, the phone extends the display length of the contacts' names. More characters can be displayed in a line. 2-On (only applicable to T48S), the phone extends the display length of the contacts' names. More characters (about 15 characters) can be displayed in a line. If the contact's name includes a dot, the dot breaks a line into two lines.	common.cfg
Features_Transfer		phone_setting.transfer_harkey_type =	0 or 1	0	Add	It configures the function of the TRANSFER key on your phone. 0-Blind Transfer, you can press the TRANSFER key to transfer a call directly to another party	common.cfg

						without consulting. 1- Consultative Transfer, you can press the TRANSFER key to transfer a call with prior consulting.	
Incoming Call Focus		phone_setting.incoming_call.priority =	0 or 1	0	Add	It enables or disables the phone to focus on incoming calls in any condition. 0-Disabled, the phone shows the incoming call after you finish operating the phone. 1-Enabled	common.cfg
Incoming Call Focus		phone_setting.incoming_call_when_dialing.priority =	0 or 1	0	Add	It enables or disables the phone to focus on incoming calls when you are dialing a call. 0-Disabled, the phone shows the incoming call after you dialing a call. 1-Enabled, the phone shows the incoming call immediately even though you are dialing a call. Note: It works only if the value of the parameter "phone_setting.incoming_call.priority" is set to 1 (Enabled).	common.cfg
SIP		sip.timeout_hangup_call.enable =	0 or 1	0	Add	It enables or disables the phone to hang up the call when the call response times out. 0-Disabled 1-Enabled	common.cfg
RTP		features.rtp_nopkt_timeout =	Integer from 0 to 300	65	Add	It configure the phone the specified time(s) to hang up the call when the phone do not receive the rtp packets.	common.cfg
Log		static.phone_setting.logging_to_usb_drive.enable =	0 or 1	0	Add	It enables or disables the phone to record local log messages to the connected	common.cfg

						USB flash drive. 0-Disabled 1-Enabled	
Log		static.phone_setting.logging_to_btoe.enable =	0 or 1	0	Add	It enables or disables the phone to upload syslog messages to the paired PC using the BToE software. The log files will be saved at the root directory of BToE on your computer. 0-Disabled 1-Enabled	common.cfg
Module Log Level Settings	syslog.directory_module.log_level =		Integer from 0 to 6	6	Delete	It configures the severity level of the directory logs.	common.cfg
Module Log Level Settings	syslog.account_module.log_level =		Integer from 0 to 6	6	Delete	It configures the severity level of the account logs.	common.cfg
Module Log Level Settings	syslog.dsskey_module.log_level =		Integer from 0 to 6	6	Delete	It configures the severity level of the DSSkey logs.	common.cfg
Module Log Level Settings	syslog.taskaction_module.log_level =		Integer from 0 to 6	6	Delete	It configures the severity level of the task action log.	common.cfg
Module Log Level Settings	syslog.setting_module.log_level =		Integer from 0 to 6	6	Delete	It configures the severity level of the setting module logs.	common.cfg
Module Log Level Settings	syslog.sfb_feature.log_level =		Integer from 0 to 6	3	Delete	It configures the severity level of the logs related to Skype for Business features.	common.cfg
Module Log Level Settings	syslog.register_loglevel =		Integer from 0 to 6	3	Delete	It configures the severity level of the register log.	common.cfg
Module Log Level Settings	syslog.subscribe_loglevel =		Integer from 0 to 6	3	Delete	It configures the severity level of the subscribe log.	common.cfg
Module Log Level Settings	syslog.call_loglevel =		Integer from 0 to 6	3	Delete	It configures the severity level of the logs related to calling feature.	common.cfg
Module Log Level	syslog.ice_loglevel =		Integer from 0 to 6	3	Delete	It configures the severity level	common.cfg

Settings						of the ICE log.	
Module Log Level Settings	syslog.btoe_loglevel =		Integer from 0 to 6	3	Delete	It configures the severity level of the BToE (Better Together over Ethernet) log.	common.cfg
Module Log Level Settings	syslog.exchange_loglevel =		Integer from 0 to 6	3	Delete	It configures the severity level of the Exchange log.	common.cfg
QoE		phone_setting.qoe.enable =	0 or 1	1	Add	It enables or disables the IP phone to send Quality of Experience (QoE) metrics to a server. 0-Disabled 1-Enabled	common.cfg

Yealink Microsoft Skype for Business Edition IP Phones

Release Notes of Version 66.9.0.25

1. Introduction

- Firmware Version:
T41S/T42S/T46S/T48S: 66.9.0.23 upgrades to 66.9.0.25
- Applicable Models: T41S, T42S, T46S, T48S
- Release Date: Dec 15th, 2017.

2. New Features

1. Added the feature of Intercom.
2. Added the feature of USB Recording.
3. Added the feature of Shared Line Appearance (SLA).
4. Added the feature that you can use the on-screen keyboard to input German and French characters on T48S.
5. Added the feature of Configuring the Unlock Attempts.
6. Added the feature that you can press **Add to local** soft key to add the history record to your local directory or press **Add to SFB** to add to Skype for Business directory.
7. Added the feature that you can add the contact to or delete the contact from Skype for Business directory from the search result.
8. Added the feature of In-Band Provisioning Settings.
9. Added the feature of Call Queue.
10. Added the feature of Wi-Fi on T48S.

3. Optimization

1. Optimized the feature that you can delete the input characters by tapping the delete soft key in the dialing interface on T48S.
2. Optimized the feature of Call Transfer that you can transfer to a history record from history.
3. Optimized the feature of Common Area Phone (CAP) that when you set the phone to work as a common area phone, no matter how you sign in the phone, by user name, PIN, BToE or web sign in, some features, like calendar, voice mail, are limited by default.
4. Optimized the feature of Presence Status.

4. Bug Fixes

None

5. New Features Descriptions

1. Added the feature of Intercom.

Description: Intercom allows establishing an audio conversation directly. The phone can answer intercom calls automatically. Intercom calls include outgoing intercom calls and incoming intercom calls, and there are four configuration options for incoming intercom calls: Intercom Allow, Intercom Mute, Intercom Tone and Intercom Barge.

The parameters in the auto provision template are described as follows:

features.intercom.enable =

features.intercom.outgoing =

features.intercom.allow =

features.intercom.barge =

features.intercom.mute =

features.intercom.tone =

intercom.x.label =

intercom.x.value =

To configure intercom features via web user interface:

Click on **Features** -> **Intercom**.

Intercom

Outgoing Intercom: ?

Intercom Allow: ?

Intercom Mute: ?

Intercom Tone: ?

Intercom Barge: ?

Intercom List

Index	Value	Label
1	80738	Jess
2	80739	Fiona
3	80740	Josh
4	80741	Andy
5	80742	Linna
6	80743	Sam
7		
8		
9		
10		

Confirm Cancel

NOTE

features-intercom-note

You can click here to get more guides.

To configure the intercom feature:

Tap **Menu** -> **Features** -> **Intercom**.

Intercom

Back

Hotline

Auto Answer

Privacy Mode

Hot-Desking

Intercom

Intercom List

2/2

1. Outgoing Intercom: ☒ On ☐ Off

2. Intercom Allow: ☒ On ☐ Off

3. Intercom Mute: ☐ On ☒ Off

4. Intercom Tone: ☒ On ☐ Off

5. Intercom Barge: ☐ On ☒ Off

Save

2. Added the feature of USB Recording.

Description: Yealink phones support recording during a call. Before recording, ensure that the USB flash drive has been inserted into the USB port of the phone. You need to press the **Start REC** soft key during a call to record the audio call or conference.

The parameters in the auto provision template are described as follows:

features.usb_call_recording.enable =

3. Added the feature of Shared Line Appearance (SLA).

Description: Shared Line Appearance is a feature in Skype for Business for handling multiple calls on a specific number called a shared number. The system administrator assigns members to a SLA group. When users call the shared number, the calls are not actually received on the shared number, instead they are forwarded to SLA groups members.

4. Added the feature of Configuring the Unlock Attempts.

Description: You can specify the maximum number of unsuccessful unlock attempts for a locked phone that is not during a call. You will be automatically signed out of the phone when the unsuccessful unlock attempts exceeds the limit.

The parameters in the auto provision template are described as follows:

sfb.phone_lock.enable =

sfb.phone_lock.max_attempts =

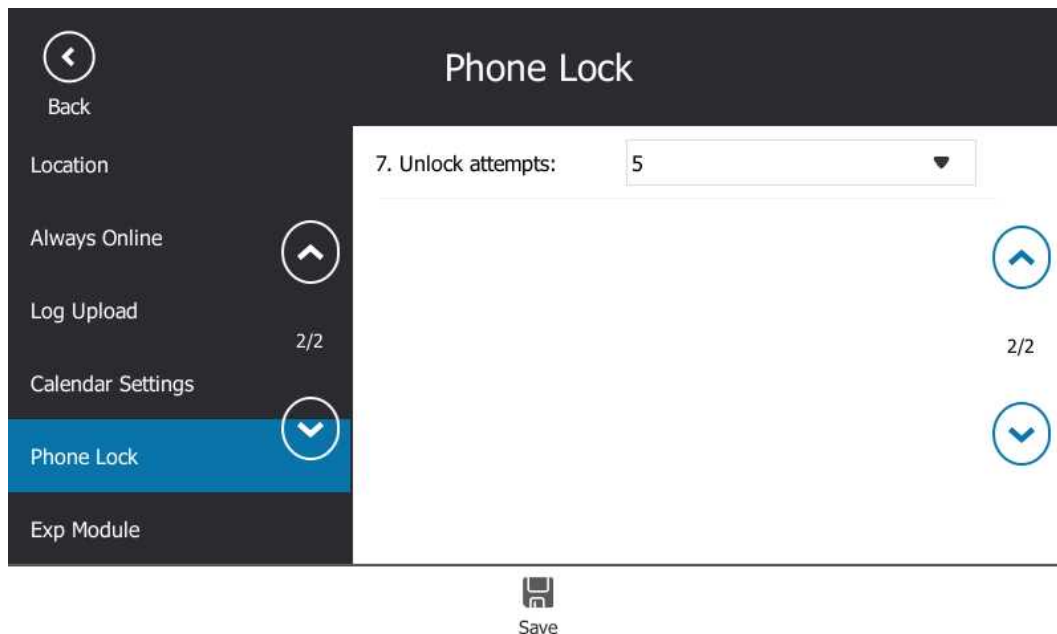
To configure the unlock attempts via web user interface:

Click on **Settings** -> **Phone Lock** -> **Max attempts of unlock**

The screenshot shows the Yealink T48S web user interface. The top navigation bar includes 'Status', 'Account', 'Network', 'Features', 'Settings', 'Directory', and 'Security'. The left sidebar lists various settings categories: MOH, Preference, Time&Date, Upgrade, Auto Provision, Configuration, Dial Plan, Voice, Tones, Phone Lock (selected), Location, EXP Module, BToE, and Power Saving. The main content area displays the 'Phone Lock' settings. The 'Phone Lock' dropdown is set to 'Enabled'. The 'Phone Unlock PIN(6~15 Digit)' is masked with dots. The 'Idle time-out(1-1440mins)' is set to 5. The 'Max attempts of unlock' is set to 5 and is highlighted with a red box. The 'Phone Lock with PC' dropdown is also set to 'Enabled'. There are 'Confirm' and 'Cancel' buttons at the bottom. A 'NOTE' section on the right states: 'settings-phonelock-note. You can click here to get more guides.'

To configure the unlock attempts via phone user interface:

Tap **Menu** -> **Basic** -> **Phone Lock** -> **Unlock attempts**.



5. Added the feature of In-Band Provisioning Settings.

Description: After the phone is signed in, the phone receives settings from the Skype for Business server pool through in-band provisioning.

Skype for Business in-band provisioning device settings take precedence over the same settings configured via central provisioning. To avoid configuration conflicts, ensure that the settings applied to phones are from one source or the other. If you are provisioning in-band, remove the parameters from the configuration files before using central provisioning method. If you are using central provisioning, it is best practice to disable in-band provisioning device settings.

The parameters in the auto provision template are described as follows:

static.phone_setting.receive_inband.enable =

static.auto_provision.custom.protect =

6. Added the feature of Call Queue.

Description: If you sign into the phone using Online account, you can use call queue feature. On-Premises environment does not support this feature.

A call queue is a feature that route and queue incoming calls to groups of people, called agents, such as for a help desk or a customer service desk.

7. Added the feature of Wi-Fi on T48S.

Description: Wi-Fi feature enables users to connect their phones to the organization's wireless network. The wireless network is more convenient and cost-effective than

wired network.

When the Wi-Fi feature is enabled, the phone will automatically scan the available wireless networks. All the available wireless networks will display in scanning list on the touch screen. You can store up to 5 frequently-used wireless networks on your phone and specify the priority for them.

The parameters in the auto provision template are described as follows:

static.wifi.enable =

static.wifi.x.label =

static.wifi.x.ssid =

static.wifi.x.security_mode =

static.wifi.x.cipher_type =

static.wifi.x.password =

static.wifi.x.priority =

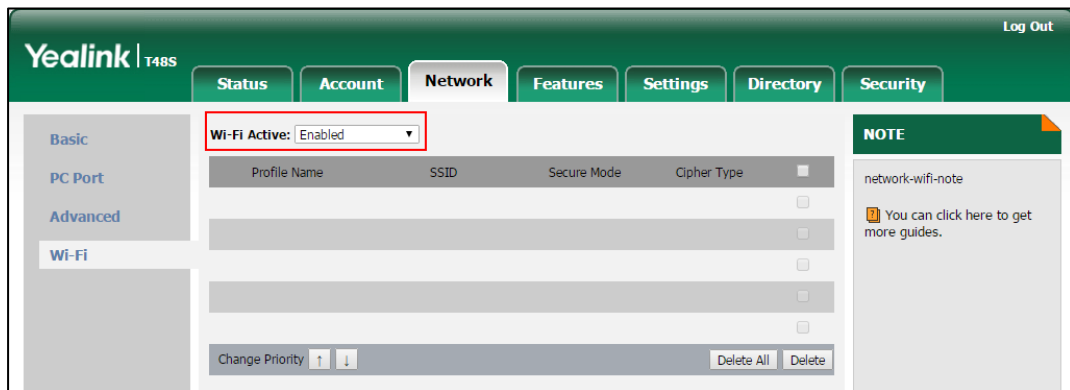
static.wifi.x.eap_user_name =

static.wifi.x.eap_type =

static.wifi.x.eap_password =

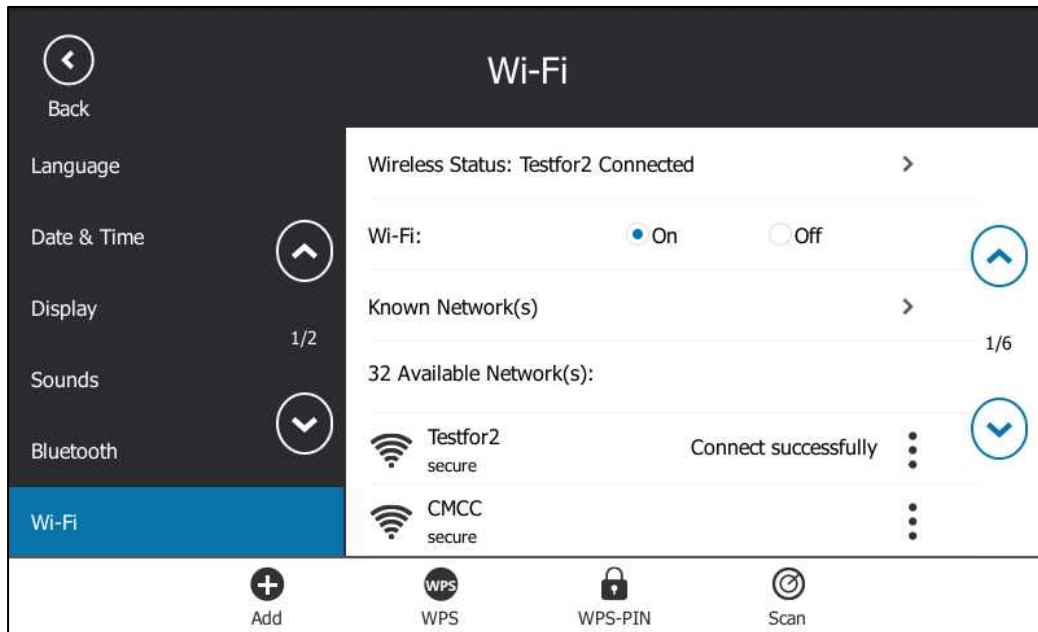
To enable the Wi-Fi feature via web user interface:

Click on **Network** -> **Wi-Fi**.



To activate the Wi-Fi mode via phone user interface:

Tap **Menu** -> **Basic** -> **Wi-Fi**.



6. Optimization Descriptions

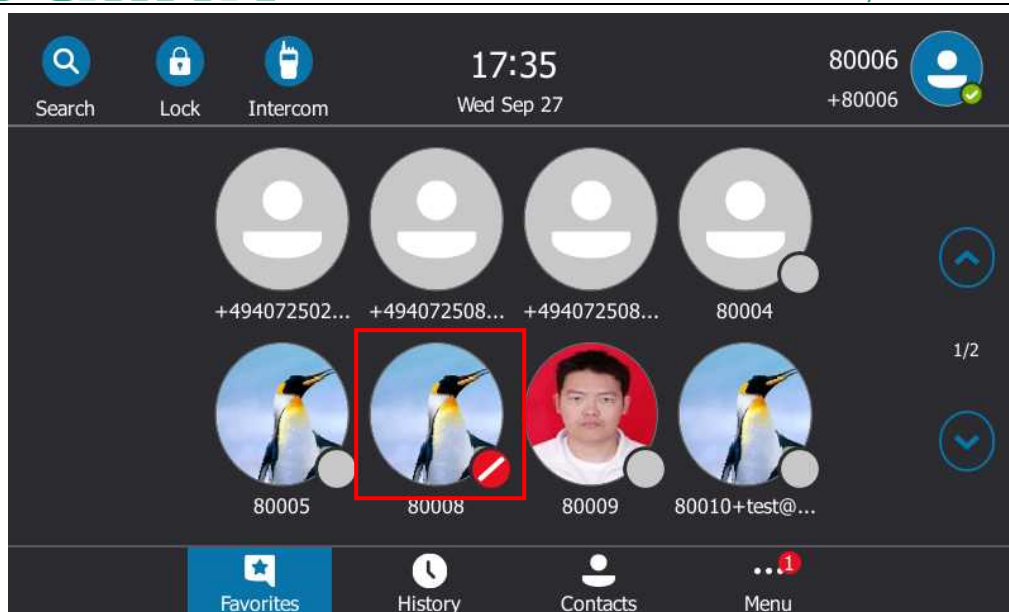
1. Optimized the feature of Presence Status.

Description:

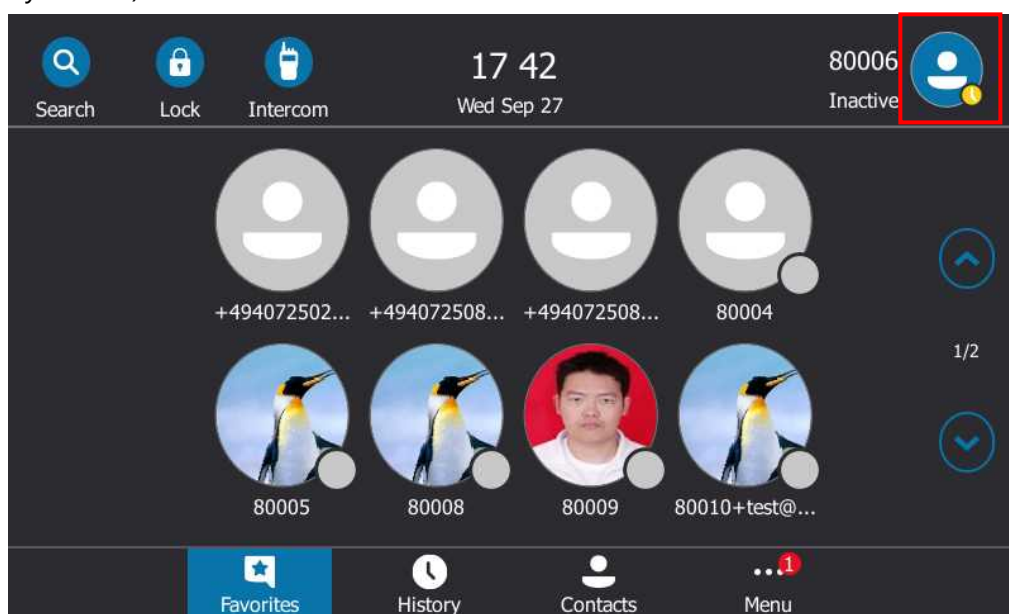
- (1) **Out of Office:** Set automatically for you when you set automatic replies in Outlook.
Note that this status cannot be set via phone user interface.



- (2) **Blocked:** Prevent a contact from reaching you via Skype for Business. You can see this status for a contact who has assigned by you to be a blocked contact using the Skype for Business client.



- (3) **Inactive:** Your phone has been idle for a specified period of time (set by you). Set automatically for you when your phone has been idle for a specified time (5 minutes by default).



7. Configuration Parameters Enhancements

Auto Provision Template Flies Change Log						
Firmware Version: [66.9.0.23]-[66.9.0.25]						
Feature	Provisioning syntax Comparison		Permitted Values	Default Value	Action	Description
	66.9.0.23	66.9.0.25				

Exchange Account		account.1.ews.auth_address =	String within 128 characters	Blank	Add	It configures the Exchange address for accessing the Microsoft Exchange Server. Example: static.account.1.ews.auth_address = yl39@redmond.yealinksfb.com	mac.cfg
Exchange Account		account.1.ews.auth_user =	String within 128 characters	Blank	Add	It configures the user name for accessing the Microsoft Exchange Server. Example: static.account.1.ews.auth_user = yl39@yealinksfb.com	mac.cfg
Exchange Account		account.1.ews.auth_pwd =	String within 128 characters	Blank	Add	It configures the password for accessing the Microsoft Exchange Server.	mac.cfg
Advanced	account.1.voice_mail.skip_pin.enable =	account.1.voice_mail.skip_pin.enable =	0 or 1	0	Change	It enables or disables the IP phone to access voice mail box without entering PIN. 0-Disabled 1-Enabled	mac.cfg
Phone Lock	sfb.phone_lock.enable =	phone_setting.phone_lock.enable =	0 or 1	1	Change	It enables or disables the phone lock feature. 1-Enabled 0-Disabled If it is set to 1 (Enabled), the IP phone will prompt the user to configure an n-digit unlock PIN at the initial sign-in.	common.cfg
Phone Lock		sfb.phone_lock.max_attempts =	Integer from 3 to 10	5	Add	It configures the maximum number of unsuccessful unlock attempts for a locked phone that is not during a call.	common.cfg
Contact		sfb.contact_search_list =	String within 255 characters	mailNickname,displayName,givenName,Sn,telephoneNumber,Mail,m	Add	It configures the attributes you can use to search the Microsoft Active Directory. The attributes are introduced as below: mailNickname: Email Alias	common.cfg

				sRTC SIP- Primary User Address ,mobile,home phone		displayName: Display Name givenName: First Name sn: Last Name, telephoneNumber: Telephone Number mail: Primary Email Address msRTC SIP- PrimaryUserAddress: SIP Address mobile: Mobile Number homephone: Home Number	
Calendar		phone_setting.calendar_reminder =	0 or 1	0	Add	It enables or disables the meeting reminder. 0-Disabled 1-Enabled If it is set to 1 (Enabled), the phone will display reminders for all meetings. The reminder appears 15 minutes before the meeting start time. If it is set to 0 (Disabled), the phone will not display reminders for any meeting.	common.cfg
Calendar		phone_setting.calendar_reminder.interval =	Integer from 1 to 15	5	Add	It configures the interval (in minutes) for the phone to display the next meeting reminder after you temporarily remove the reminder. Note: It works only if the value of the parameter "phone_setting.calendar_reminder" is set to 1 (Enabled).	common.cfg
CAP		features.set_area_cap.enable =	0 or 1	0	Add	It enables or disables the phone to work as a common area phone. 0-Disabled, the phone will work as an individual phone. 1-Enabled, the phone will work as a common area phone (with limited features enabled).	common.cfg

Login		features.web_sign_in.enable =	0 or 1	1	Add	It enables or disables the user to sign into the phone using Web Sign-In method. 0-Disabled 1-Enabled	common.cfg
Features_Intercom		features.intercom.enable =	0 or 1	1	Add	It enables or disables the phone to display intercom configurations. 0-Disabled 1-Enabled	common.cfg
Features_Intercom		features.intercom.outgoing =	0 or 1	0	Add	It enables or disables the IP phone to place an outgoing intercom call from the intercom list. 0-Disabled 1-Enabled Note: It works only if the value of parameter "features.intercom.enable" is set to 1 (Enabled).	common.cfg
Features_Intercom		features.intercom.allow =	0 or 1	1	Add	It enables or disables the IP phone to answer an incoming intercom call. 0-Disabled, the IP phone will handle an incoming intercom call like a normal incoming call. 1-Enabled, the IP phone will automatically answer an incoming intercom call.	common.cfg
Features_Intercom		features.intercom.barge =	0 or 1	0	Add	It enables or disables the IP phone to answer an incoming intercom call while there is already an active call on the IP phone. 0-Disabled, the IP phone will handle an incoming intercom call like a normal incoming call while there is already an active call on the IP phone. 1-Enabled, the IP phone will	common.cfg

						<p>automatically answer the intercom call while there is already an active call on the IP phone and place the active call on hold.</p> <p>Note: It works only if the values of parameters "features.intercom.allow" and "call_waiting.enable" are set to 1 (Enabled) and the value of the parameters "phone_setting.call_appearance.calls_per_linekey" is greater than 1 .</p>	
Features_I ntercom		features.interc om.mute =	0 or 1	0	Add	<p>It enables or disables the IP phone to mute the microphone when answering an intercom call.</p> <p>0-Disabled</p> <p>1-Enabled, the microphone is muted for intercom calls, and then the other party cannot hear you.</p> <p>Note: It works only if the values of parameters "features.intercom.allow" and "features.allow_mute" are set to 1 (Enabled).</p>	common. cfg
Features_I ntercom		features.interc om.tone =	0 or 1	1	Add	<p>It enables or disables the IP phone to play a warning tone when answering an intercom call.</p> <p>0-Disabled</p> <p>1-Enabled</p> <p>Note: It works only if the value of the parameter "features.intercom.allow" is set to 1 (Enabled).</p>	common. cfg
Features_I ntercom		intercom.x.lab el = (x ranges from 1 to 5)	string	Blank	Add	<p>It configures the label displayed on the intercom list.</p> <p>Example:</p>	common. cfg

						intercom1.label = test Note: It works only if the values of parameters "features.intercom.enable" and "features.intercom.outgoing" are set to 1 (Enabled).	
Features_Intercom		intercom.x.value = (x ranges from 1 to 5)	string	Blank	Add	It configures the intercom number displayed on the intercom list. Example: intercom1.value = 4039 Note: It works only if the values of parameters "features.intercom.enable" and "features.intercom.outgoing" are set to 1 (Enabled).	common. cfg
Features_Wi-Fi		static.wifi.enable =	0 or 1	0	Add	It enables or disables the Wi-Fi feature. 0-Disabled 1-Enabled	common. cfg
Features_Wi-Fi		static.wifi.x.label = (X ranges from 1 to 5)	String within 32 characters	Blank	Add	It configures the profile name of the wireless network X for the IP phone. Note: It works only if the value of the parameter "static.wifi.enable" is set to 1 (Enabled).	common. cfg
Features_Wi-Fi		static.wifi.x.ssid = (X ranges from 1 to 5)	String within 32 characters	Blank	Add	It configures the Service Set Identifier (SSID) of the wireless network X. SSID is a unique identifier for accessing wireless access points. Note: It works only if the value of the parameter "static.wifi.enable" is set to 1 (Enabled).	common. cfg
Features_Wi-Fi		static.wifi.x.security_mode =	NONE, WEP, WPA-PSK, WPA2-PSK,	NONE	Add	It configures the security mode of the wireless network X. Note: It works only if the value	common. cfg

		(X ranges from 1 to 5)	WPA-EAP or WPA2-EAP			of the parameter "static.wifi.enable" is set to 1 (Enabled).	
Features_ Wi-Fi		static.wifi.x.cipher_type = (X ranges from 1 to 5)	NONE, WEP, TKIP, AES or TKIP AES	NONE	Add	<p>It configures the encryption type of the wireless network X. If the value of the parameter "static.wifi.x.security_mode" is set to NONE, the permitted value of this parameter is NONE.</p> <p>If the value of the parameter "static.wifi.x.security_mode" is set to WEP, the permitted value of this parameter is WEP.</p> <p>If the value of the parameter "static.wifi.x.security_mode" is set to other values, the permitted values of this parameter are TKIP, AES or TKIP AES.</p> <p>Note: It works only if the value of the parameter "static.wifi.enable" is set to 1 (Enabled).</p>	common. cfg
Features_ Wi-Fi		static.wifi.x.password = (X ranges from 1 to 5)	String within 64 characters	Blank	Add	<p>It configures the password of the wireless network X.</p> <p>Note: It works only if the value of the parameter "static.wifi.enable" is set to 1 (Enabled) and "static.wifi.x.security_mode" is set to WEP, WPA-PSK or WPA2-PSK.</p>	common. cfg
Features_ Wi-Fi		static.wifi.x.priority = (X ranges from 1 to 5)	Integer from 1 to 5	1	Add	<p>It configures the priority for the wireless network X for the IP phone.</p> <p>5 is the highest priority, 1 is the lowest priority.</p> <p>Note: It works only if the value of the parameter "static.wifi.enable" is set to 1</p>	common. cfg

						(Enabled).	
Features_ Wi-Fi		static.wifi.x.ea p_user_name = (X ranges from 1 to 5)	String within 32 characters	Blank	Add	It configures the EAP authentication username of the wireless network X. Note: It works only if the value of the parameter "static.wifi.enable" is set to 1 (Enabled), "static.wifi.x.security_mode" is set to WPA-EAP or WPA2-EAP and the value of the parameter "static.wifi.x.eap_type" is set to TTLS or PEAP .	common. cfg
Features_ Wi-Fi		static.wifi.x.ea p_type = (X ranges from 1 to 5)	TTLS, PEAP or TLS	Blank	Add	It configures the EAP authentication mode of the wireless network X. Note: It works only if the value of the parameter "static.wifi.enable" is set to 1 (Enabled) and "static.wifi.x.security_mode" is set to WPA-EAP or WPA2-EAP.	common. cfg
Features_ Wi-Fi		static.wifi.x.ea p_password = (X ranges from 1 to 5)	String within 64 characters	Blank	Add	It configures the EAP authentication password of the wireless network X. Note: It works only if the value of the parameter "static.wifi.enable" is set to 1 (Enabled) and "static.wifi.x.security_mode" is set to WPA-EAP or WPA2-EAP.	common. cfg
Inband		static.phone_s etting.receive _inband.enabl e =	0 or 1	1	Add	It enables or disables the in-band provisioning device settings sent from Skype for Business. 0-Disabled, the phone blocks in-band provisioning device settings sent from Skype for Business. 1-Enabled, the phone accepts in-band provisioning device	common. cfg

						settings sent from Skype for Business.	
Inband		static.auto_provision.custom_protect =	0 or 1	0	Add	<p>It enables or disables the provisioning methods priority.</p> <p>0-Disabled, different provisioning methods (central provisioning, in-band Provisioning and manual Provisioning) have no priority. The subsequent operations always override previous operations regardless of the provisioning method you are using.</p> <p>1-Enabled, different provisioning methods have priority (phone/web user interface>in-band provisioning>central provisioning>factory defaults). Provision with high priority will not be overwritten by provision with low priority.</p>	common.cfg
USB Record		features.usb_call_recording.enable =	0 or 1	0	Add	<p>It enables or disables the call recording (using a USB flash drive) feature for the phone.</p> <p>0-Disabled</p> <p>1-Enabled, you can record the active audio call for the phone by pressing the Start REC soft key, and the recorded calls will be saved to the USB flash drive.</p>	common.cfg
Root CA		sfb.cert_service.url =	String within 513 characters	Blank	Add	It configures the web server URL for downloading the Root CA when your environment cannot obtain this URL automatically.	common.cfg

8. Default Value Setting Changes

Default Value Factory Setting Change Log			
Features	Description	Default Value of Factory Setting	
		66.9.0.23	66.9.0.25
Inband Provision	It configures the login authentication method. 0-enabled all supportive authentication method 1-org-id authentication 2-OAuth authentication 4-NTLM authentication 8-device pairing authentication	static.account.1.auth_method = 0	static.account.1.auth_method = 2

Yealink Microsoft Skype for Business Edition IP Phones

Release Notes of Version 66.9.0.23

1. Introduction

- Firmware Version:
T41S/T42S/T46S/T48S: 66.9.0.5 upgrades to 66.9.0.23
- Applicable Models: T41S, T42S, T46S, T48S
- Release Date: Sep 15th, 2017.

2. New Features

1. Added the feature of Allowing Update from the Skype for Business Server.

3. Optimization

1. Changed the file format of installation package of BToE into .msi and optimized the UI of BToE also.
2. Optimized the feature that after you sign into common area phone (CAP), you cannot change the account status when you tap the avatar on T48S.

4. Bug Fixes

None

5. New Features Descriptions

1. **Added the feature of Allowing Update from the Skype for Business Server.**

Description: The system administrator should allow the phone to download firmware from the Skype for Business server first.

(1) When no User Signs in

If you use central provisioning method to deploy your phones, updating firmware from Skype for Business Server can be configured using the configuration file.

(2) When a User Signs in

When a user signs into the phone, the phone will receive in-band provisioning

parameters sent from the Skype for Business server.

For more information, please refer to *Updating Phone Firmware from Skype for Business Server*.

6. Configuration Parameters Enhancements

Auto Provision Template Flies Change Log							
Firmware Version: [66.9.0.5]-[66.9.0.23]							
Feature	Provisioning syntax Comparison		Permitted Values	Default Value	Action	Description	File
	66.9.0.5	66.9.0.23					
LED		phone_setting.boss_admin.talk_power_light.enable =	0 or 1	0	Add	It enables or disables the power indicator LED to be turned on when using the Boss-Admin feature. 0-Disabled (power indicator LED does not flash) 1-Enabled (power indicator LED fast flashes (500ms) red)	common.cfg
Syslog		static.auto_provision.local_log.backup.enable =	0 or 1	0	Add	It enables or disables the IP phone to upload the local log files (<MAC>-boot.log and <MAC>-sys.log) to the provisioning server or a specific server. 0-Disabled 1-Enabled If it is set to 1 (Enabled), the IP phone will upload the local log files to the provisioning server or the specific server to back up these files when one of the following happens: - Auto provisioning is triggered; - The size of the local log files reaches maximum configured by the parameter "static.local_log.max_file_size";	common.cfg

						<p>- It's time to upload local log files according to the upload period configured by the parameter "static.auto_provision.local_log.backup.upload_period".</p> <p>Note: The upload path is configured by the parameter "static.auto_provision.local_log.backup.path".</p>	
Syslog		static.auto_provision.local_log.backup.path =	URL within 1024 characters	Blank	Add	<p>It configures the upload path of the local log files (<MAC>-boot.log and <MAC>-sys.log). If you leave it blank, the IP phone will upload the local log files to the provisioning server.</p> <p>If you configure a relative URL (e.g., /upload), the IP phone will upload the local log files by extracting the root directory from the access URL of the provisioning server.</p> <p>If you configure an absolute URL with protocol (e.g., tftp), the IP phone will upload the local log files using the desired protocol. If no protocol, the IP phone will use the same protocol with auto provisioning for uploading files.</p> <p>Example:</p> <p>static.auto_provision.local_log.backup.path = tftp://10.3.6.133/upload/</p> <p>Note: It works only if the value of the parameter "static.auto_provision.local_log.backup.enable" is set to 1 (Enabled).</p>	common.cfg
Syslog		static.auto_provision.local_log.backup.period =	Integer from 30 to 86400	30	Add	It configures the period (in seconds) of the local log files	common.cfg

		og.backup.upload_period =				(<MAC>-boot.log and <MAC>-sys.log) uploads to the provisioning server or a specific server. Example: static.auto_provision.local_log.backup.upload_period = 60 Note: It works only if the value of the parameter "static.auto_provision.local_log.backup.enable" is set to 1 (Enabled).	
Syslog		static.auto_provision.local_log.backup.append =	0 or 1	0	Add	It configures whether the local log files (<MAC>-boot.log and <MAC>-sys.log) on the provisioning server or a specific server are overwritten or appended. 0-Overwrite 1-Append (not applicable to TFTP Server)	common.cfg
Syslog		static.auto_provision.local_log.backup.append.limit_mode =	0 or 1	0	Add	It configures the behavior when local log files (<MAC>-boot.log and <MAC>-sys.log) on the provisioning server or a specific server reach the maximum size. 0-Delete 1-Stet If it is set to 1 (Delete), the IP phone will delete the old log and start over. If it is set to 2 (Stet), the IP phone will stop uploading log.	common.cfg
Syslog		static.auto_provision.local_log.backup.append.max_file_size =	Integer from 200 to 65535	1024	Add	It configures the maximum size (in KB) of the local log files (<MAC>-boot.log and <MAC>-sys.log) can be stored on the provisioning server or a specific server. Example:	common.cfg

						static.auto_provision.local_log. backup.append.max_file_size = 1025	
Syslog		static.auto_pr ovision.local_l og.backup.bo otlog.upload_ wait_time =	Integer from 1 to 86400	120	Add	It configures the waiting time (in seconds) before the phone uploads the local log file (<MAC>-boot.log) to the provisioning server or a specific server after startup. Example: static.auto_provision.local_log. backup.bootlog.upload_wait_ti me = 121	common. cfg

Yealink Microsoft Skype for Business Edition IP Phones

Release Notes of Version 66.9.0.5

1. Introduction

- Firmware Version:
T41S/T42S/T46S/T48S: 66.8.0.5 upgrades to 66.9.0.5
- Applicable Models: T41S, T42S, T46S, T48S
- Release Date: June 5th, 2017.

2. New Features

1. Added the feature of Hot Desking.
2. Added the feature of Multiple Emergency Numbers.
3. Added the feature of Resetting Your lock PIN.
4. Added the feature of Screen Saver for T46S and T48S.
5. Added the feature of Power Saving.

3. Optimization

1. Change the UI style of T46S and T48S into Black&White.
2. Optimized the feature of Music on Hold (MoH).
3. Optimized the user experience of Call forward which is consistent with the SFB client.
4. Optimized the feature of Calendar.
5. Optimized the feature that the phone will show you the source of each Skype for Business contact (from outlook, local or Skype for Business) on the phone.
6. Optimized the sign in status.

4. Bug Fixes

None

5. New Features Descriptions

1. Added the feature of Hot Desking.

Description: Hot desking originates from the definition of being the temporary

physical occupant of a work station or surface by a particular employee. A primary motivation for hot desking is cost reduction. Hot desking is regularly used in places where not all employees are in the office at the same time, or not in the office for a long time, which means actual personal offices would often be vacant, consuming valuable space and resources.

Hot desking allows a Guest to clear registration configurations of the Host on the phone, and then register his own account.

The parameters in the auto provision template are described as follows:

sfb.hot_desking.enable =

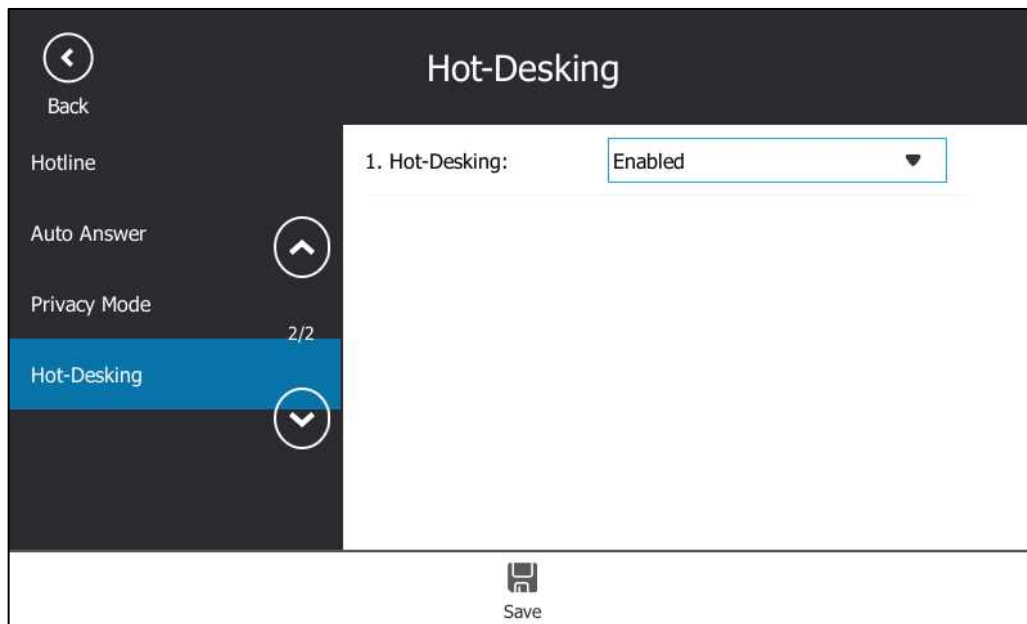
To configure hot desking via web user interface:

Click on **Features** -> **General Information**.

The screenshot shows the Yealink T46S web interface. The top navigation bar includes 'Status', 'Account', 'Network', 'Features', 'Settings', 'Directory', and 'Security'. The 'Features' tab is selected, and the 'General Information' sub-tab is active. On the left sidebar, 'General Information' is highlighted. The main content area lists various settings. The 'Hot Desking Enable' setting at the bottom is highlighted with a red rectangular box and is currently set to 'Enabled'. Other settings include 'Call Waiting' (Enabled), 'Key As Send' (#), 'Hotline Number' (empty), 'Hotline Delay(0~10s)' (4), 'Busy Tone Delay (Seconds)' (0), 'Return code when refuse' (603 (Decline)), 'Time-Out for Dial-Now Rule' (1), 'SFB Cert Service URL' (empty), 'Enable SFB Automation' (Disabled), 'SFB Inactive Time' (5), 'SFB Away Time' (5), 'Web Sign in' (Enabled), 'Set as CAP' (Disabled), 'Remember Password' (Disabled), 'History Record Contacts Avatar' (Enabled), 'Auto Discover' (Enabled), and 'Exchange Server Uri' (empty). A 'NOTE' section on the right provides details for 'Call Waiting' and 'Key As Send'. At the bottom, there are 'Confirm' and 'Cancel' buttons.

To configure hot desking feature via phone user interface:

Press **Menu** -> **Features** -> **Hot-Desking**.

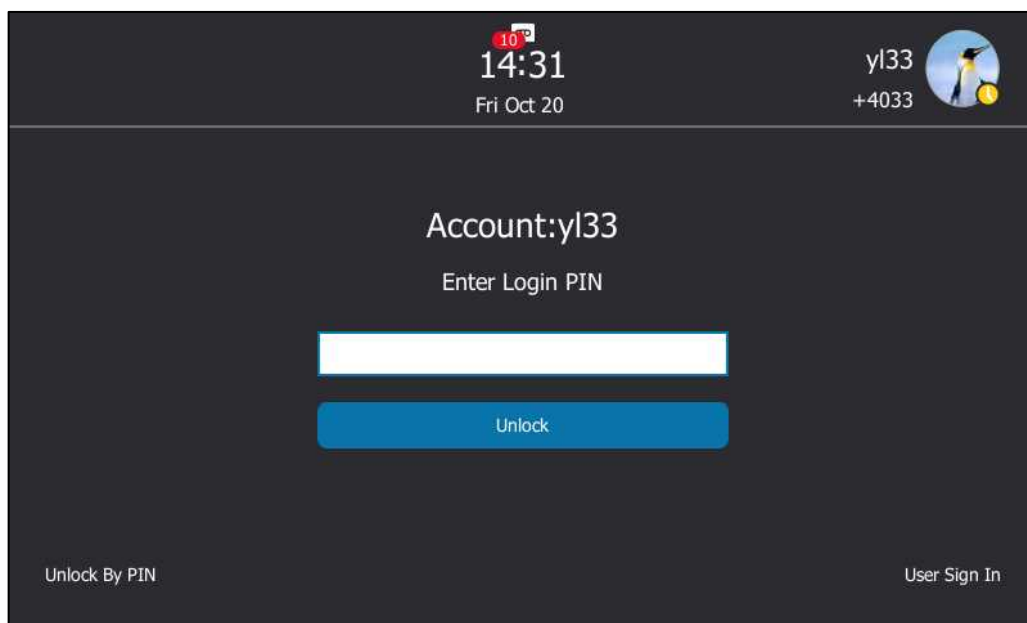


2. Added the feature of Resetting Your lock PIN.

Description: If you forget your lock PIN, you can reset the lock PIN from your phone using your login password.

To reset the lock PIN when the phone is locked via phone user interface:

Tap **Forgot unlock PIN?** on the lock screen.



3. Added the feature of Screen Saver for T46S and T48S.

Description: The screen saver will automatically start when the phone has been idle for a certain amount of time if you have configured the screensaver wait time. You can

stop the screen saver and return to the idle screen at any time by pressing a key on the phone or tapping the touch screen (touch screen is only applicable to T48S Skype for Business phones). Users can select to display the built-in screen saver or a custom screen saver.

The parameters in the auto provision template are described as follows:

screensaver.wait_time=

screensaver.type=

screensaver.picture_change_interval =

screensaver.clock_move_interval =

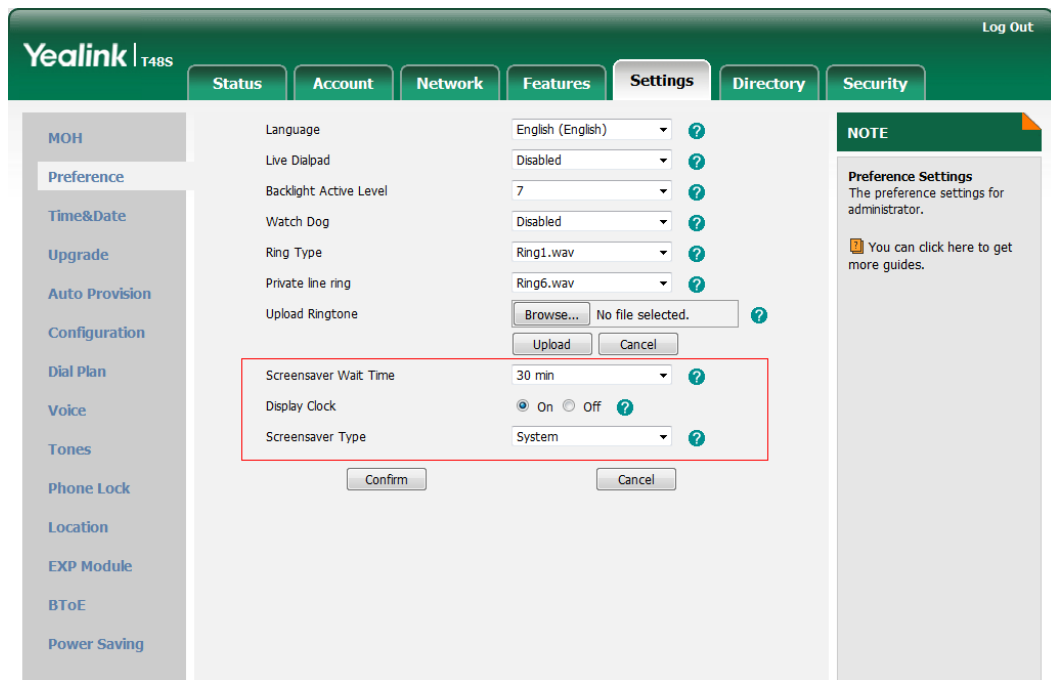
screensaver.display_clock.enable ="

screensaver.upload_url =

screensaver.delete =

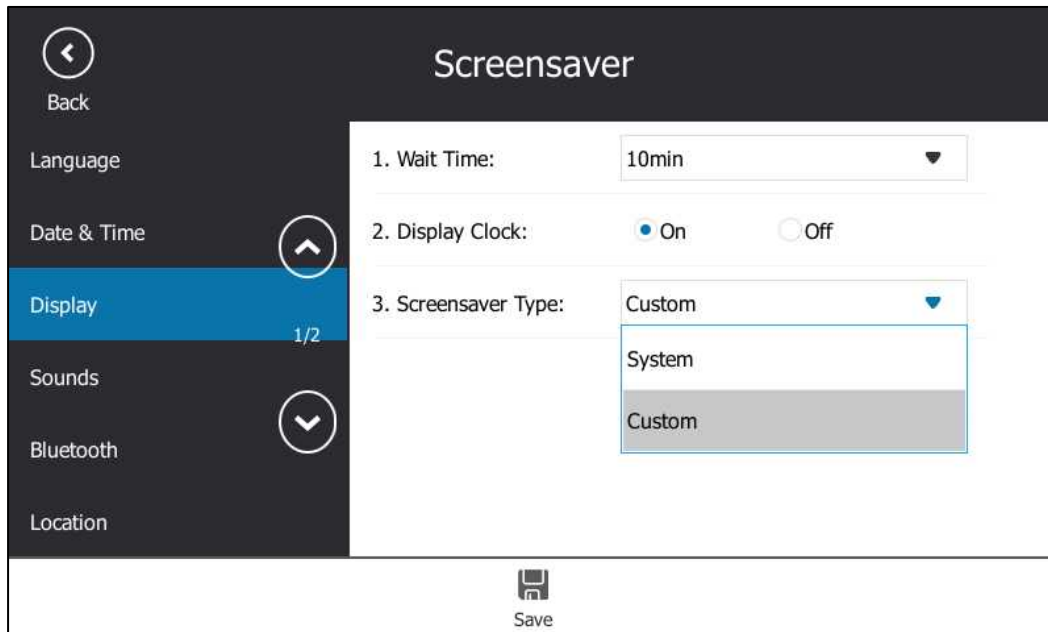
To configure the screen saver via phone user interface:

Click on **Settings** -> **Preference**.



To configure the screen saver via phone user interface:

Press **Menu** -> **Basic** -> **Display** -> **Screensaver**.



4. Added the feature of Power Saving.

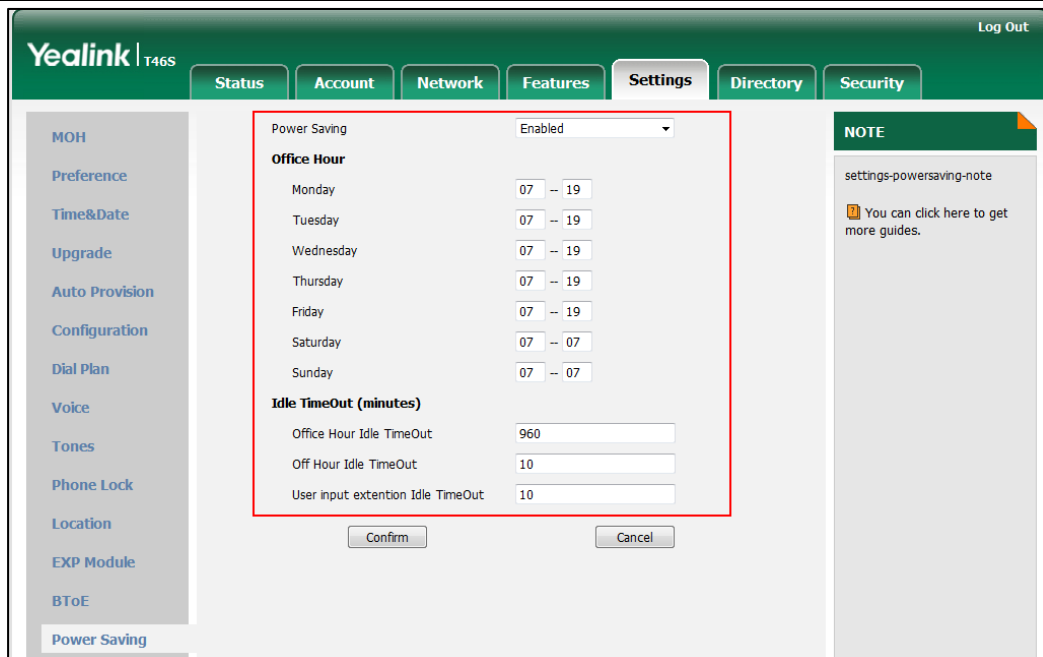
Description: The power-saving feature is used to turn off the backlight and screen to conserve energy. The phone enters power-saving mode after it has been idle for a certain period of time. And the phone will exit power-saving mode if a phone event occurs - for example, the phone receives an incoming call, or you press a key on the phone.

The parameters in the auto provision template are described as follows:

features.power_saving.office_hour.idle_timeout =
features.power_saving.off_hour.idle_timeout =
features.power_saving.user_input_ext.idle_timeout =
features.power_saving.office_hour.monday =
features.power_saving.office_hour.tuesday =
features.power_saving.office_hour.wednesday =
features.power_saving.office_hour.thursday =
features.power_saving.office_hour.friday =
features.power_saving.office_hour.saturday =
features.power_saving.office_hour.sunday =
features.power_saving.enable =

To configure the power-saving feature via web user interface:

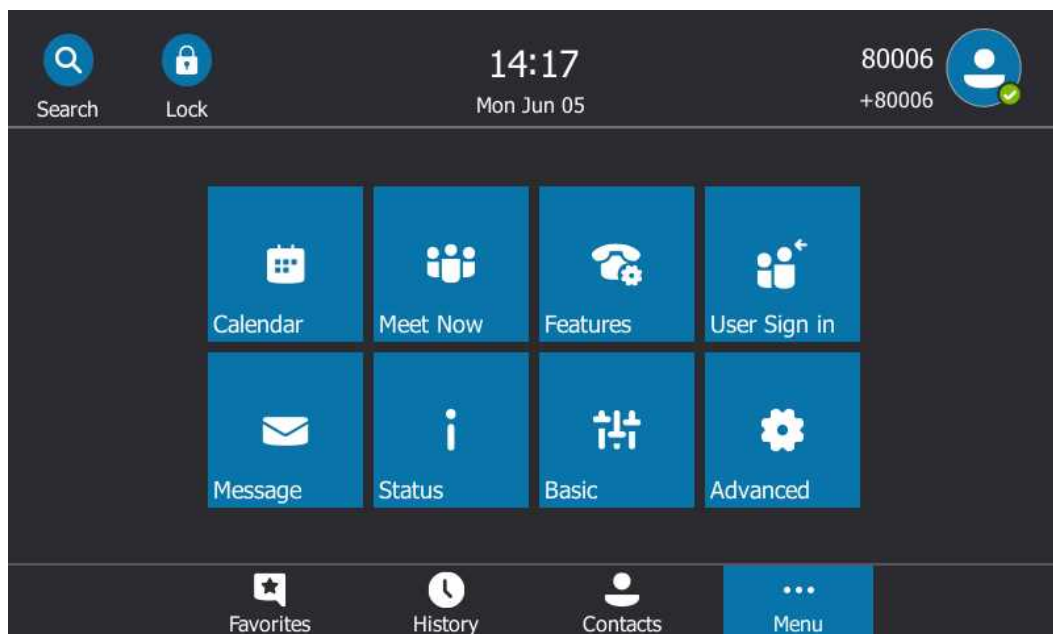
Click on **Settings** -> **Power Saving**.



6. Optimization Descriptions

1. Change the UI style of T46S and T48S into Black&White.

Description: Take T48S as an example, after you log in successfully, the UI is shown as below:



2. Optimized the feature of Music on Hold (MoH).

Description: Users can upload a custom music to the phone or use the music received from the Skype for Business server via In-band provisioning method.

The parameters in the auto provision template are described as follows:

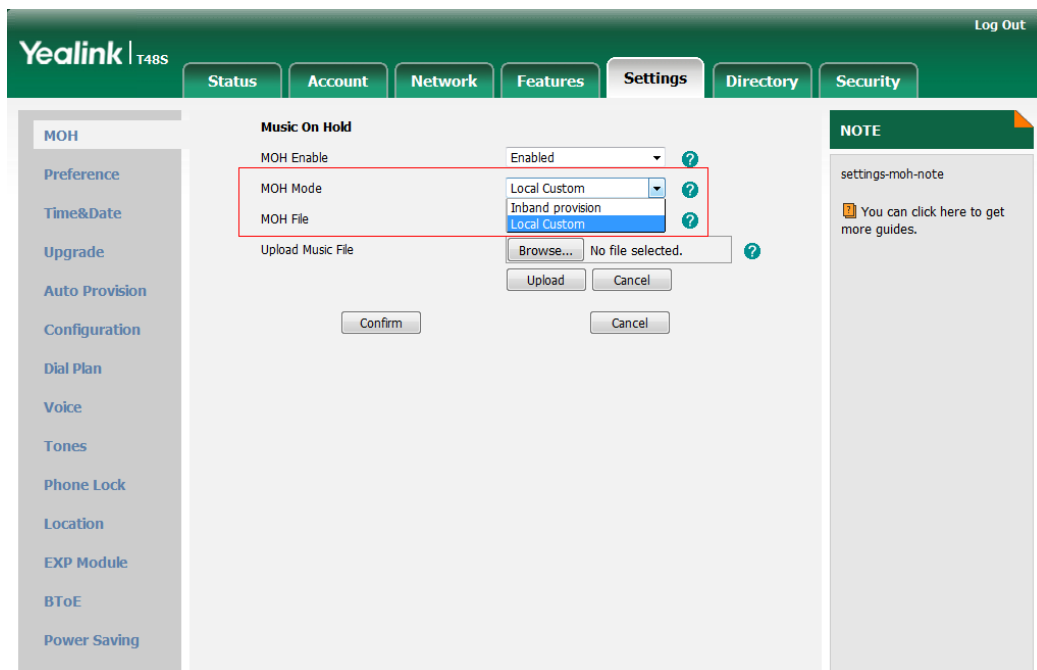
sfb.music_on_hold.mode=

sfb.music_on_hold.url=

sfb.music_on_hold.delete=

To configure music on hold via web user interface:

Click on **Settings** -> **MOH**.



3. Optimized the feature of Calendar.

Description:

(1) Working with Schedule Reminders

If you have a schedule, a reminder pop-up is displayed 15 minutes before it starts.

The reminder shows the main information of the schedule, including subject, start time, end time and the rest time.

The parameters in the auto provision template are described as follows:

phone_setting.calendar_reminder =

phoen_setting.calendar_reminder.interval =

To configure the reminder via phone user interface:

Press **Menu** -> **Basic** -> **Calendar Settings**.

(2) Calendar Status Synchronization

You can synchronize the calendar status with Microsoft Outlook application on your phone.

7. Configuration Parameters Enhancements

Auto Provision Template Flies Change Log							
Firmware Version: [66.8.0.5]-[66.9.0.5]							
Feature	Provisioning syntax Comparison		Permitted Values	Default Value	Action	Description	File
	66.8.0.5	66.9.0.5					
Power Saving		features.power_saving.office_hour.idle_timeout =	Integer from 1 to 960	960	Add	It configures the time (in minutes) to wait in the idle state before IP phone enters power-saving mode during the office hours. Example: features.power_saving.office_hour.idle_timeout = 600 The IP phone will enter power-saving mode when it has been inactivated for 600 minutes (10 hour) during the office hours.	common.cfg
Power Saving		features.power_saving.off	Integer from 1 to 10	10	Add	It configures the time (in minutes) to wait in the idle	common.cfg

		_hour.idle_timeout =				state before IP phone enters power-saving mode during the non-office hours. Example: features.power_saving.off_hour.idle_timeout = 5 The IP phone will enter power-saving mode when it has been inactivated for 5 minutes during the non-office hours.	
Power Saving		features.power_saving.user_input_ext.idle_timeout =	Integer from 1 to 30	10	Add	It configures the minimum time (in minutes) to wait in the idle state - after using the phone - before the IP phone enters power-saving mode. Example: features.power_saving.user_input_ext.idle_timeout = 5	common.cfg
Power Saving		features.power_saving.office_hour.monday =	Integer from 0 to 23, Integer from 0 to 23	7,19	Add	It configures the starting time and ending time of the day's office hour on Monday. Starting time and ending time are separated by a comma. Example: features.power_saving.office_hour.monday = 7,19	common.cfg
Power Saving		features.power_saving.office_hour.tuesday =	Integer from 0 to 23, Integer from 0 to 23	7,19	Add	It configures the starting time and ending time of the day's office hour on Tuesday. Starting time and ending time are separated by a comma. Example: features.power_saving.office_hour.tuesday = 7,19	common.cfg
Power Saving		features.power_saving.office_hour.wednesday =	Integer from 0 to 23, Integer from 0 to 23	7,19	Add	It configures the starting time and ending time of the day's office hour on Wednesday. Starting time and ending time are separated by a comma. Example: features.power_saving.office_hour.wednesday = 7,19	common.cfg

						features.power_saving.office_h our.wednesday = 7,19	
Power Saving		features.pow er_saving.offi ce_hour.tues day =	Integer from 0 to 23, Integer from 0 to 23	7,19	Add	It configures the starting time and ending time of the day's office hour on Tuesday. Starting time and ending time are separated by a comma. Example: features.power_saving.office_h our.tuesday = 7,19	common. cfg
Power Saving		features.pow er_saving.offi ce_hour.frida y =	Integer from 0 to 23, Integer from 0 to 23	7,19	Add	It configures the starting time and ending time of the day's office hour on Tuesday. Starting time and ending time are separated by a comma. Example: features.power_saving.office_h our.friday = 7,19	common. cfg
Power Saving		features.pow er_saving.offi ce_hour.satu rday =	Integer from 0 to 23, Integer from 0 to 23	7,7	Add	It configures the starting time and ending time of the day's office hour on Saturday. Starting time and ending time are separated by a comma. Example: features.power_saving.office_h our.saturday = 7,7 It represents there is no office hour on Saturday.	common. cfg
Power Saving		features.pow er_saving.offi ce_hour.sun day =	Integer from 0 to 23, Integer from 0 to 23	7,7	Add	It configures the starting time and ending time of the day's office hour on Sunday. Starting time and ending time are separated by a comma. Example: features.power_saving.office_h our.sunday = 7,7 It represents there is no office hour on Sunday.	common. cfg
Power		features.pow	0 or 1	1	Add	It enables or disables the	common.

Saving		er_saving.enable =				power saving feature. 0-Disabled 1-Enabled	cfg
Screen saver		screensaver.wait_time =	15, 30, 60, 120, 300, 600, 1800, 3600, 7200, 10800 or 21600	600	Add	It configures the time (in seconds) to wait in the idle state before the screen saver starts. 15-15s 30-30s 60-1min 120-2min 300-5min 600-10min 1800-30min 3600-1h 7200-2h 10800-3h 21600-6h	common. cfg
Screen saver		screensaver.type =	0 or 1	0	Add	It configures the type of screen saver to display. 0-System, the LCD screen will display the built-in picture. 1-Custom, the LCD screen will display the custom screen saver images (configured by the parameter "screensaver.upload_url "). If multiple images are uploaded, the IP phone will display all images alternately. The time interval is configured by the parameter "screensaver.picture_change_interval".	common. cfg
Screen saver		screensaver.picture_change_interval =	Integer from 5 to 1200	60	Add	It configures the interval (in seconds) for the IP phone to change the picture when the screen saver starts. Note: It works only if the value of the parameter	common. cfg

						<p>"screensaver.type" is set to 1 (Upload Picture) and the parameter "screensaver.upload_url" should be configured in advance.</p>	
Screen saver		screensaver.clock_move_interval =	Integer from 5 to 1200	600	Add	<p>It configures the interval (in seconds) for the IP phone to move the clock and icons when the screen saver starts.</p> <p>Note: It works only if the value of the parameter "screensaver.display_clock.enable" is set to 1 (Enabled).</p>	common.cfg
Screen saver		screensaver.display_clock.enable =	0 or 1	1	Add	<p>It enables or disables the IP phone to display the clock and icons when the screen saver starts.</p> <p>0-Disabled 1-Enabled</p>	common.cfg
Screen saver		screensaver.upload_url =	URL within 511 characters	Blank	Add	<p>It configures the access URL of the custom screen saver image.</p> <p>Example:</p> <p>screensaver.upload_url = http://192.168.10.25/Screenshot.jpg</p> <p>During the auto provisioning process, the IP phone connects to the HTTP provisioning server "192.168.10.25", and downloads the screen saver image "Screenshot.jpg".</p> <p>If you want to upload multiple screen saver images to the phone simultaneously, you can configure as following:</p> <p>screensaver.upload_url = http://192.168.10.25/Screenshot.jpg</p>	common.cfg

						screensaver.upload_url = http://192.168.10.25/Screensaver.jpg	
Screen saver		screensaver.delete =	http://localhost/all or http://localhost/name.jpg/png/bmp)	Blank	Add	It deletes the specified or all custom screen saver images. Example: Delete all custom screen saver images: screensaver.delete = http://localhost/all Delete a custom screen saver image (for example, Screenshot.jpg): gui_lang.delete = http://localhost/Screenshot.jpg	common.cfg
Autodiscover		phone_settings_autodiscover.enable =	0 or 1	1	Add	It enables or disables the phone to obtain the Microsoft Exchange Server address automatically via Auto discover request. 0-Disabled 1-Enabled If it is set to 1 (Enabled), the phone will obtain Microsoft Exchange Server address automatically via Auto discover request. If it is set to 0 (Disabled), the phone does not obtain Microsoft Exchange Server address automatically via Auto discover request. You need to configure the Microsoft Exchange Server address manually.	common.cfg
Hotdesking		sfb.hot_desking.enable =	0 or 1	1	Add	It enables or disables the hot desking feature. 0-Disabled 1-Enabled	common.cfg

						Note: This parameter is controlled by the policy "EnableHotDesking" configured on the Skype for Business Server. If it is disabled on the Skype for Business Server, you cannot use hot desking feature even if you set "sfb.hot_desking.enable" to 1(Enabled).	
MOH		sfb.music_on_hold.mode =	0 or 1	1	Add	<p>It configures the source of the music played for the held party.</p> <p>0-Inband Provision 1-Local Custom</p> <p>If it is set to 1 (Enabled), your phone will play the music received from the Skype for Business Server (via Inband provisioning method) to the held party.</p> <p>If it is set to 0 (Disabled), your phone will play the custom music to the held party.</p> <p>Note: It works only if the value of the parameter "sfb.music_on_hold.enable" is set to 1 (Enabled).</p>	common.cfg
MOH		sfb.music_on_hold.url =	URL within 512 characters	Blank	Add	<p>It configures the access URL of the custom music file.</p> <p>Example: sfb.music_on_hold.url = tftp://192.168.1.100/Customring.wav</p> <p>Note: It works only if the values of the parameter "sfb.music_on_hold.enable" and parameter "sfb.music_on_hold.mode" are set to 1.</p>	common.cfg

MOH		sfb.music_on_hold.delete =	URL within 512 characters	Blank	Add	Delete all custom music files. Example: sfb.music_on_hold.delete = http://localhost/all	common.cfg
Calendar		phone_setting.calendar_reminder =	0 or 1	0	Add	It enables or disables the meeting reminder. 0-Disabled 1-Enabled If it is set to 1 (Enabled), the phone will display reminders for all meetings. The reminder appears 15 minutes before the meeting start time. If it is set to 0 (Disabled), the phone will not display reminders for any meeting.	common.cfg
Calendar		phone_setting.calendar_reminder.interval =	Integer from 1 to 15	5	Add	It configures the interval (in minutes) for the phone to display the next meeting reminder after you temporarily remove the reminder. Note: It works only if the value of the parameter "phone_setting.calendar_reminder" is set to 1 (Enabled).	common.cfg
CAP		features.set_as_cap.enable =	0 or 1	0	Add	It enables or disables the phone to work as a common area phone. 0-Disabled, the phone will work as an individual phone. 1-Enabled, the phone will work as a common area phone (with limited features enabled).	common.cfg
Phone Lock		sfb.phone_lock.time_out =	Integer from 1 to 1440	10	Add	It configures the time (in minutes) the phone can be idle before it automatically locks.	common.cfg
Phone Lock		sfb.phone_lock_with_pc.e	0 or 1	0	Add	It enables or disables the phone to be locked and	common.cfg

		nable =				<p>unlocked automatically when you lock or unlock your computer.</p> <p>0-Enabled</p> <p>1-Disabled</p> <p>Note: It works only when your phone is paired with your computer using the BToE (Better Together over Ethernet) application and the BToE status is Paired (Sign In).</p>	
Contact		phone_setting.search_skype_contacts.return_number =	Integer from 0 to 1000	20	Add	It defines the maximum number of Skype contacts to be displayed when you perform a search in the dialing screen.	common.cfg
Contact		phone_setting.search_local_contacts.return_number =	Integer from 0 to 1000	20	Add	It defines the maximum number of local contacts to be displayed when you perform a search in the dialing screen.	common.cfg
Features		features.search_num_filter =	String within 255 characters	()-	Add	<p>It configures the characters the IP phone filters when searching for contacts.</p> <p>If the entered number contains the configured characters, the phone will automatically filter these characters when searching for contacts.</p> <p>Example:</p> <p>features.search_num_filter = -</p> <p>If you enter 40-38, the phone will filter the character -, and then search 4038.</p> <p>Note: If it is left blank, the phone will not automatically filter any characters when searching for contacts. If you want to filter just a space, you have to set the value to " " (a space first followed by a</p>	common.cfg

						comma).	
Contact		search_in_dialing.local_directory.enable =	0 or 1	1	Add	It enables or disables the phone to search for local contacts in the dialing screen. 0-Disabled 1-Enabled	common. cfg
Contact		search_in_dialing.outlook_directory.enable =	0 or 1	1	Add	It enables or disables the phone to search for outlook contacts in the dialing screen. 0-Disabled 1-Enabled	common. cfg
Contact		search_in_dialing.lync_directory.enable =	0 or 1	1	Add	It enables or disables the phone to search for Microsoft Active Directory in the dialing screen. 0-Disabled 1-Enabled	common. cfg
Contact		search_in_dialing.local_directory.priority =	Integer from 1 to 3	1	Add	It configures the search priority of the local contacts when you are searching for contacts the dialing screen. 1 is the highest priority, 3 is the lowest priority.	common. cfg
Contact		search_in_dialing.outlook_directory.priority =	Integer from 1 to 3	2	Add	It configures the search priority of the outlook contacts when you are searching for contacts the dialing screen. 1 is the highest priority, 3 is the lowest priority.	common. cfg
Contact		search_in_dialing.lync_directory.priority =	Integer from 1 to 3	3	Add	It configures the search priority of the Microsoft Active Directory when you are searching for contacts the dialing screen. 1 is the highest priority, 3 is the lowest priority.	common. cfg
Module Log Level Settings		syslog.directory_module.log_level =	Integer from 0 to 6	6	Add	It configures the severity level of the directory logs.	common. cfg

Module Log Level Settings		syslog.account_module.log_level =	Integer from 0 to 6	6	Add	It configures the severity level of the account logs.	common.cfg
Module Log Level Settings		syslog.dsskey_module.log_level =	Integer from 0 to 6	6	Add	It configures the severity level of the DSSkey logs.	common.cfg
Module Log Level Settings		syslog.taskaction_module.log_level =	Integer from 0 to 6	6	Add	It configures the severity level of the task action log.	common.cfg
Module Log Level Settings		syslog.setting_module.log_level =	Integer from 0 to 6	6	Add	It configures the severity level of the setting module logs.	common.cfg
Module Log Level Settings		syslog.sfb_feature.log_level =	Integer from 0 to 6	3	Add	It configures the severity level of the logs related to Skype for Business features.	common.cfg
Module Log Level Settings		syslog.register_log_level =	Integer from 0 to 6	3	Add	It configures the severity level of the register log.	common.cfg
Module Log Level Settings		syslog.subscribe_log_level =	Integer from 0 to 6	3	Add	It configures the severity level of the subscribe log.	common.cfg
Module Log Level Settings		syslog.calling_log_level =	Integer from 0 to 6	3	Add	It configures the severity level of the logs related to calling feature.	common.cfg
Module Log Level Settings		syslog.ice_log_level =	Integer from 0 to 6	3	Add	It configures the severity level of the ICE log.	common.cfg
Module Log Level Settings		syslog.btoe_log_level =	Integer from 0 to 6	3	Add	It configures the severity level of the BToE (Better Together over Ethernet) log.	common.cfg
Module Log Level Settings		syslog.exchange_log_level =	Integer from 0 to 6	3	Add	It configures the severity level of the Exchange log.	common.cfg