



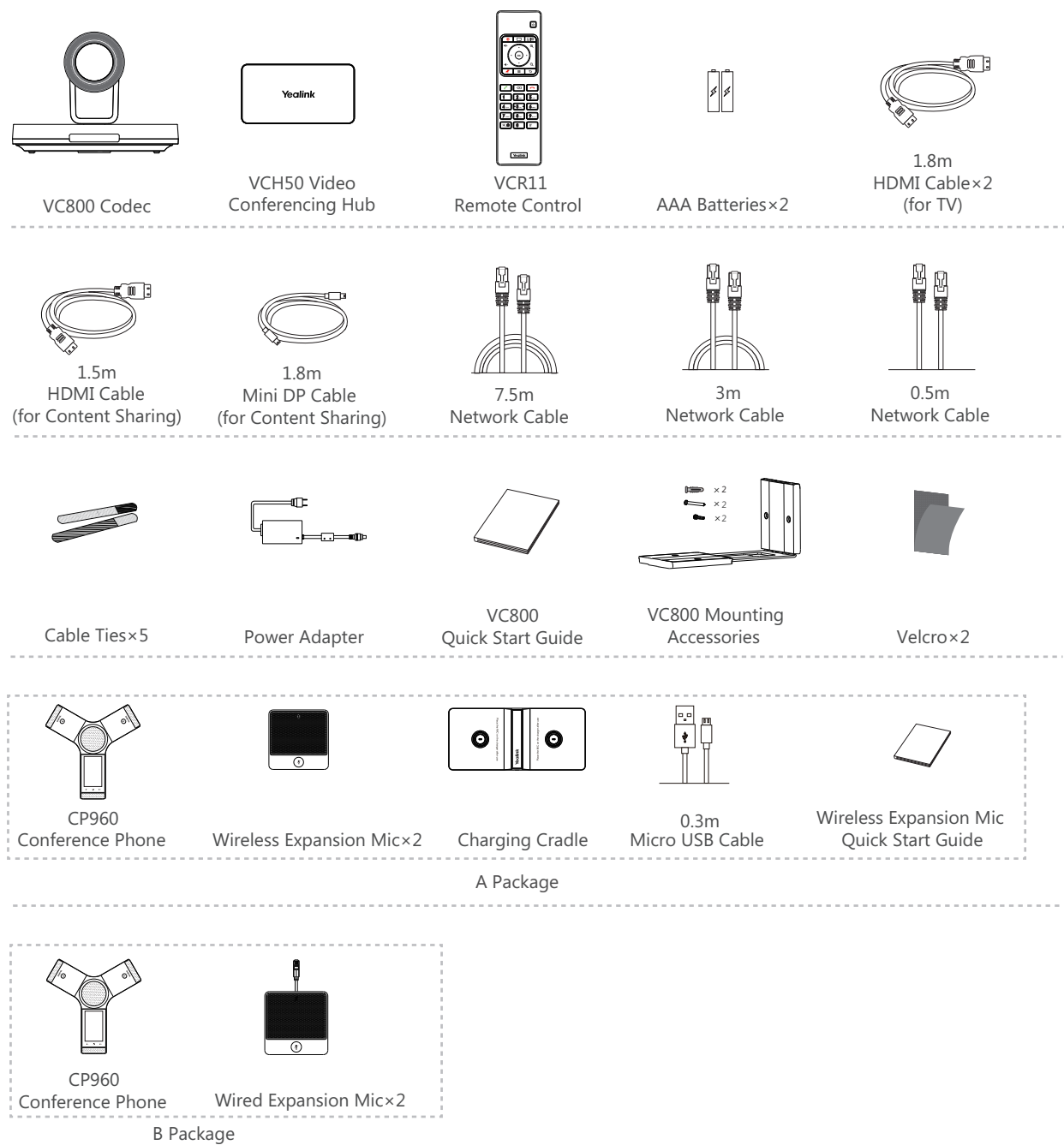
Yealink Network Technology CO., LTD

Yealink VC800 Full HD Video Conferencing System Quick Start Guide

V30.6

Applies to firmware version 63.30.0.6 or later

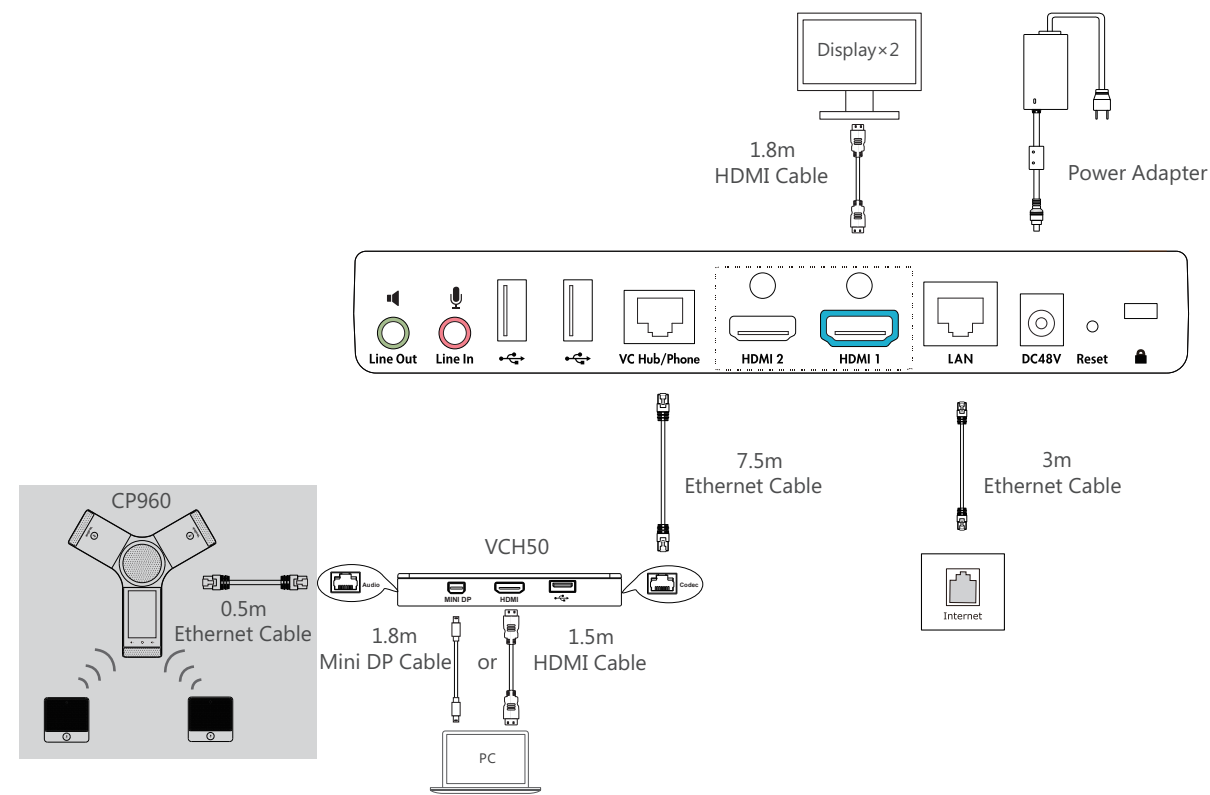
Packaging Contents



- ⚡ We recommend that you use the accessories and cables provided or approved by Yealink. The use of unapproved third-party accessories and cables may result in reduced performance.
- 💡 VC800 codec can work with A package or B package.
- 💡 The system should be used with Yealink original power adapter (48V/0.7A) only. The use of the third-party power adapter may cause the damage to the system. The cable and wire should be replaced at once if its skin is broken.

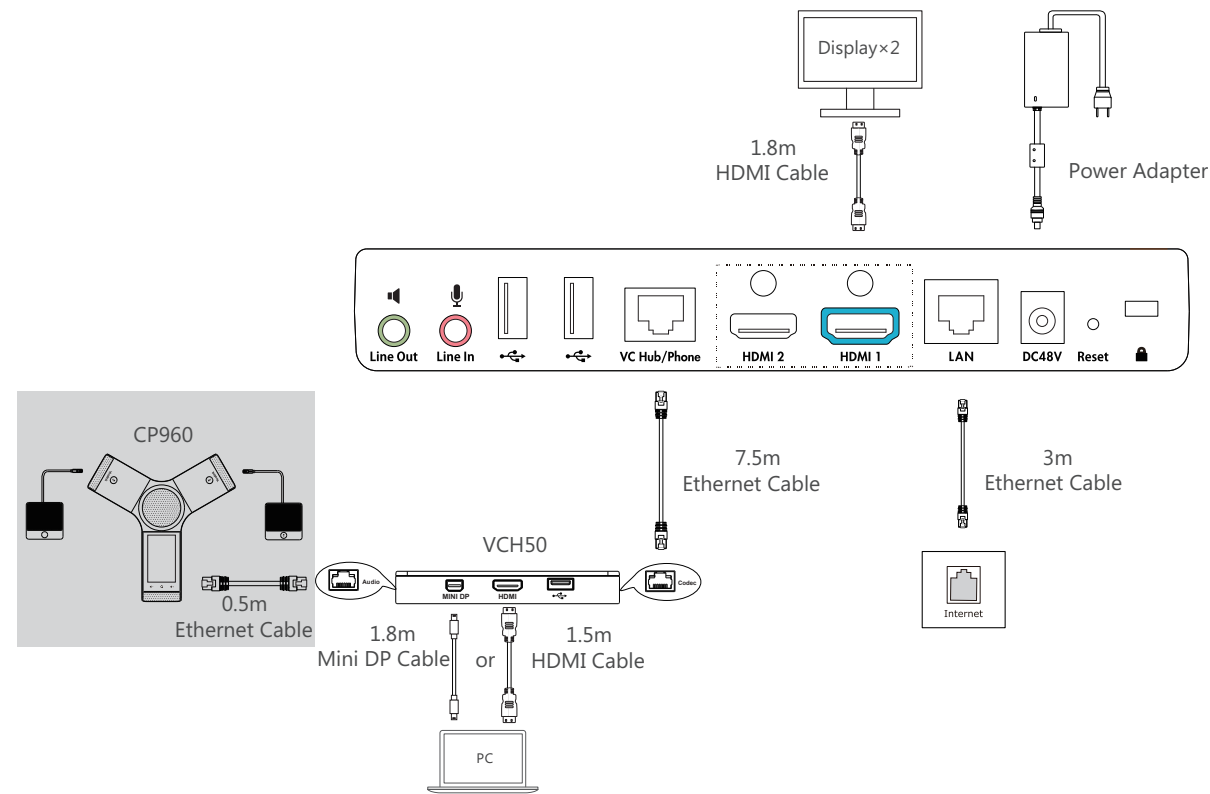
Connections

- If you use A package, you can do the following:



- 💡 Please connect to the HDMI 1 port if you only have one display device.
- 💡 You can also connect the VC Hub/Phone port on the VC800 codec to the Internet port on CP960 conference phone directly.

- If you use B package, you can do the following:



- 💡 Please connect to the HDMI 1 port if you only have one display device.

About Yealink

Yealink (Stock Code: 300628) is a global leading unified communication (UC) terminal solution provider that primarily offers video conferencing systems and voice communication solutions. Founded in 2001, Yealink leverages its independent research and development and innovation to pursue its core mission: "Easy collaboration, high productivity." The company's high-quality UC terminal solutions enhance the work efficiency and competitive advantages of its customers in over 100 countries. Yealink is the world's second-largest SIP phone provider and is number one in the China market.

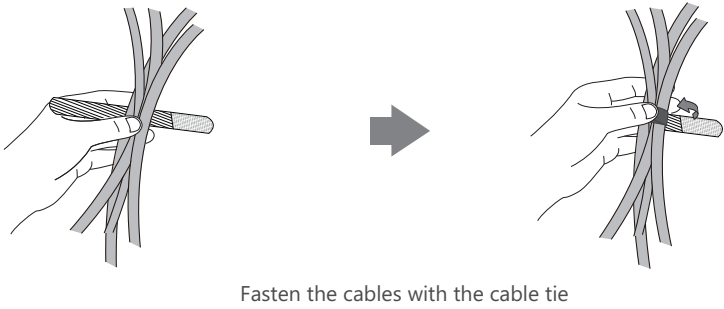
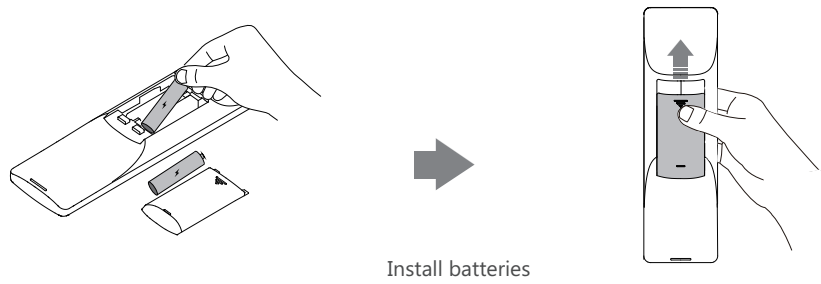
Technical Support

Visit Yealink WIKI (<http://support.yealink.com/>) for the latest firmware, guides, FAQ, Product documents, and more. For better service, we sincerely recommend you to use Yealink Ticketing system (<https://ticket.yealink.com>) to submit all your technical issues.



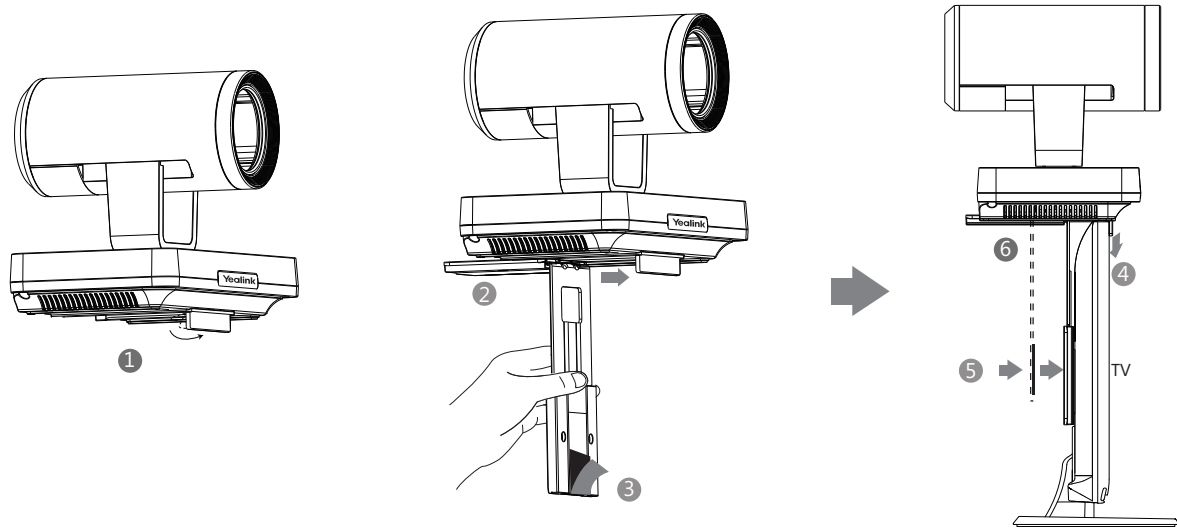
YEALINK(XIAMEN) NETWORK TECHNOLOGY CO.,LTD.
Web: www.yealink.com
Addr: 309, 3th Floor, No.16, Yun Ding North Road, Huli District, Xiamen City, Fujian, P.R. China
Copyright©2017 YEALINK(XIAMEN) NETWORK TECHNOLOGY CO.,LTD.All rights reserved.

Remote Control and Cable Ties Installation



VC800 Codec Installation

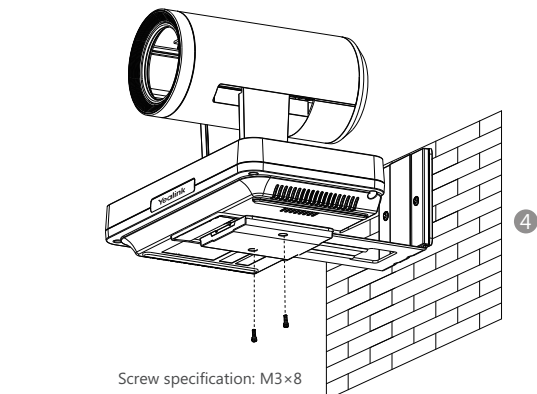
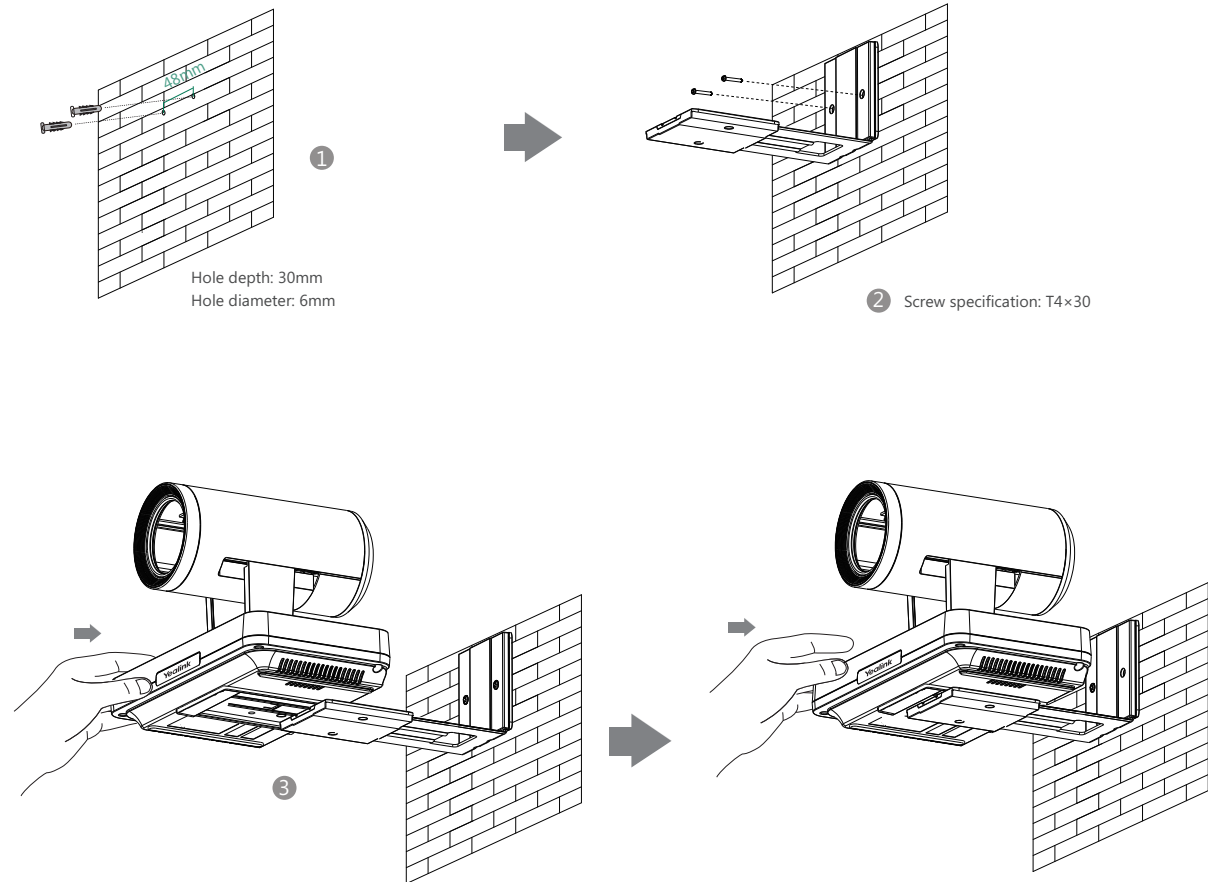
- Hanging Mode**
Please choose the following installation mode when the thickness of the TV is between 35-120mm.



- Steps:
- Open the baffle.
 - Push the bracket along the track at the bottom of the VC800 codec.
 - Remove the protection of the Velcro.
 - Put the bracket on the top of the TV.
 - Make sure the back of the TV is clean, and then adjust the bracket to ensure close adhesion to the back of the TV with Velcro.
 - Lock the VC800 codec to the bracket with two M3x8 screws.
- Adjust the bracket to ensure close adhesion to the back of the TV.

3

- Wall-mount Mode**



- Steps:
- Punch holes & Insert expansion bolts.
 - Drive two T4x30 screws.
 - Push the VC800 codec along the track of the bracket.
 - Lock the VC800 codec to the bracket with two M3x8 screws.

The recommended height for VC800 codec positioning is 1.6m-1.8m.

4

Network Deployment

VC800 supports two network deployment methods: Cloud deployment and traditional deployment.

- Cloud Deployment**

With Cloud service, organizations can communicate using the Cloud platform, so that complex network settings are unnecessary. You can log into Yealink VC Cloud Management Service/Yealink Meeting Server/StarLeaf/Zoom/Pexip/BlueJeans/Mind platform using VC800 video conferencing system. Get account information from your administrator.

Do the following to log into your VC800 via remote control:

- Select **More->Setting->Advanced** (Default Admin Password:0000)->**Video Conference Platform**.
- In the **Cloud Account** field, check the **Enabled** checkbox.
- Select the desired platform from the pull-down list of **Platform Type**.
- Configure the desired platform and log in.

- Traditional Deployment**

If you do not log into the Cloud platform, you can choose traditional deployment method to deploy your VC800, and dial the IP address of other device to make a call.

In order to ensure that the VC800 can work properly, please configure it according to the actual situation.

If it is in the head office, please make sure that it is reachable from public network. If it is in the branch office, please use intelligent traversal to deploy it or just follow the same steps as for the head office.

Head Office

If you deploy VC800 in the head office, at least one static public IP address is required in the head office to allow branch offices to connect.

Do one of the following to deploy VC800:

Option1: To deploy the VC800 on a public network, at least one static public IP address is required, you need to assign a static public IP address to the VC800.

Option2: To deploy the VC800 in an Intranet (behind the firewall), you must assign a static private IP address to the VC800. In the meantime, do port mapping on the firewall for VC800.

Configure a Static IP

The following introduces how to configure a static IP address for the VC800.

For example: use the remote control to configure a static IPv4 address for your VC800.

- Select **More->Setting->Advanced** (Default Admin Password:0000)->**Internet Configuration**.
- Select **IPv4** from the pull-down list of **IP Mode**.
- Press **▲** or **▼** to select **IPv4**, and then press **(OK)**.
- Uncheck the **DHCP** checkbox.
- Enter the IP address, subnet mask, gateway and DNS information in corresponding fields.
- Press **▲** or **▼** to select **Save**, and then press **(OK)** to save the configuration.
- The screen prompts **Reboot now?** . Select **OK** to reboot the system.

Configure Port Mapping

If the VC800 is deployed in an Intranet, and you want to solve the interconnection problem by port mapping, you must forward the following ports to the public network on the firewall.

Function	Port	Protocol Type
H.323 signal port	1719-1720	UDP/TCP
Audio & Video media stream port	50000-50499	TCP/UDP
Web management port (optional)	443	TCP
SIP (optional)	5060	TCP/UDP

5

It is recommended that you forward the web management port (443/TCP) to the public network, so that the head office can remotely manage the branch office.

Function	Port	Protocol Type
H.323 signal port	1719-1720	UDP/TCP
Audio & Video media stream port	50000-50499	TCP/UDP
SIP (optional)	5060-5061	TCP/UDP

Bandwidth Requirements

- To ensure the performance of video conference, the recommended bandwidth for VC800 is as below:

Video Resolution	Recommended Bandwidth
Full HD 1080P	1.3Mb
People 1080P+Content 1080P	2.6Mb

For more information on the configurations, contact your system administrator.

The bandwidth mentioned above is based on two-way conference. Bandwidth in head office should be increased along with the growing number of connected branch offices.

Troubleshooting

- After installation and deployment, you can test the VC800 by calling the Yealink Demo Room. If you cannot dial out successfully, please contact your network administrator to check the network connectivity.
- If you are in the following situations:
 - You do not use Cloud platform.
 - You deploy your VC800 in an Intranet.
 - You have configured port mapping on the firewall or gateway.

But you find that local system appears black screen and you cannot hear sound when you call Yealink Demo Room or other systems. The most likely reason is that the firewall or gateway in your environment does not support the H.323 ALG feature. In this situation, please take the following actions so that the NAT feature on the VC800 can solve this problem.

To configure NAT via the remote control:

- Select **More->Setting->Advanced** (Default Admin Password:0000)->**NAT/Firewall**.
- Select **Auto** from the pull-down list of **Type**, the system will obtain public IP address automatically.
- If the system does not obtain a public IP address automatically, select **Manual Settings** from the pull-down list of **Type**, and then enter the public IP address in the **Public IP Address** field.

Yealink Demo Room IP: 117.28.251.50, 117.28.251.51

6