

Wall Mount Quick Installation Guide for SIP-T23_T22_T21_T20_T19 IP Phones

This quick installation guide provides step-by-step instructions for mounting your IP phone to a wall.

Wall mount is available for the following IP phones:

- SIP-T23P/G IP Phone
- SIP-T22(P) IP Phone
- SIP-T21(P) E2 IP Phone
- SIP-T21(P) IP Phone
- SIP-T20(P) IP Phone
- SIP-T19(P) IP Phone
- SIP-T19(P) E2 IP Phone

Depending on which model you own, your IP phone can be mounted to the wall in one of two ways:

- By using the stand (included with SIP-T23P/T23G/T22(P)/T21(P)/T21(P) E2 /T20(P) IP phone)
- By using the slots on the back of the phone (for SIP-T19(P)/T19(P) E2 IP phone)

Screws, wall anchors and applicable tools are also required for wallmount installation. These are not included with your IP phones. You need to purchase them separately.

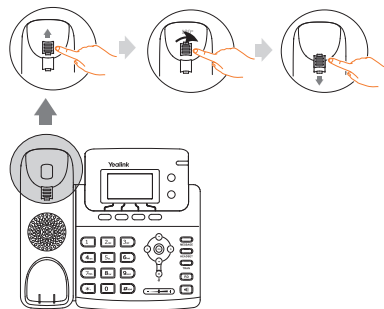
Adjusting the Hookswitch Tab

The IP phone is packaged with the hookswitch tab in desk mount position. Before mounting the IP phone to a wall, you must set the hookswitch tab to wall mount position.

To adjust the hookswitch tab:

1. Pull the hookswitch tab in the handset cradle.
2. Rotate the hookswitch tab 180 degrees.
3. Reinsert the hookswitch tab.

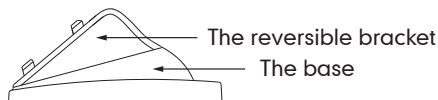
Adjust the hookswitch tab as shown below (Take a SIP-T21P IP phone as an example):



The hookswitch tab has a lip which allows the handset to stay on-hook when the IP phone is mounted vertically.

Adjusting the Stand

SIP-T23P/G, SIP-T22(P), SIP-T21(P), SIP-T21(P) E2 and SIP-T20(P) IP phones are mounted to the wall via the stand which consists of the reversible bracket and the base, as shown below:

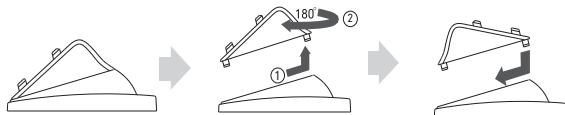


SIP-T19(P)/T19(P) E2 IP phones are mounted to the wall via the slots on the back of the phone. If you are using a SIP-T19(P)/T19(P) E2 IP phone, see the section "Mounting the IP Phone to the Wall".

To adjust the stand(Not applicable to the SIP-T19(P)/T19(P) E2 IP phone):

1. Detach the reversible bracket from the stand.
2. Rotate the reversible bracket 180 degrees.
3. Attach the reversible bracket to the base.

Adjust the stand as shown below:

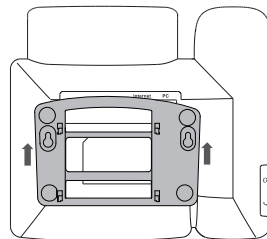


Attaching the Stand to the IP Phone

To attach the stand to the IP phone(Not applicable to the SIP-T19(P)/T19(P) E2 IP phone):

1. Insert the tabs on the stand into the slots on the back of IP phone. And then slide the stand to up.

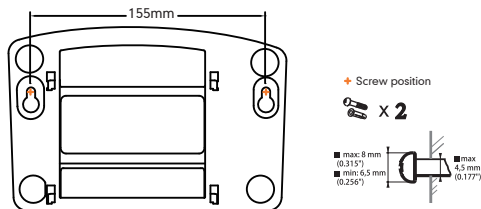
Attach the stand to the IP phone as shown below
(Take a SIP-T21P IP phone as an example):



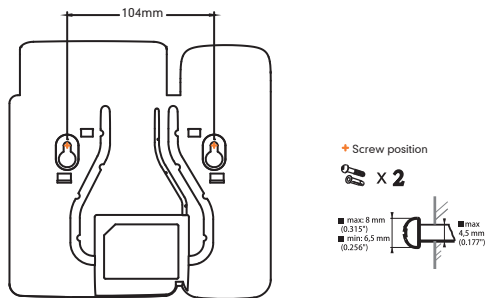
Mounting the IP Phone to the Wall

Yealink provides the wall mount drilling template for each IP phone model, which locates and marks the position for mounting the anchors/screws (not provided) on the wall, as shown below:

For SIP-T23P/T23G/T22(P)/T21(P)/T21(P) E2/T20(P) IP phones:



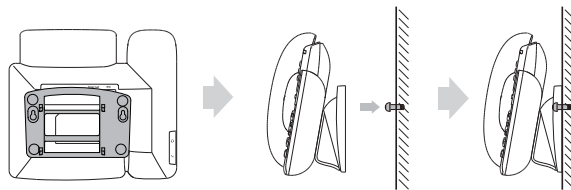
For SIP-T19(P)/T19(P) E2 IP phones:



You can also download the wall mount drilling template online: <http://www.yealink.com/Support.aspx>.

Following the drilling template above, you can mount the IP phone to the wall, as shown below (Take SIP-T21P and SIP-T19P IP phones as examples):

For a SIP-T21P IP phone:



For a SIP-T19P IP phone:

