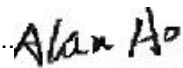
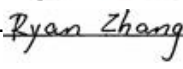


TEST REPORT

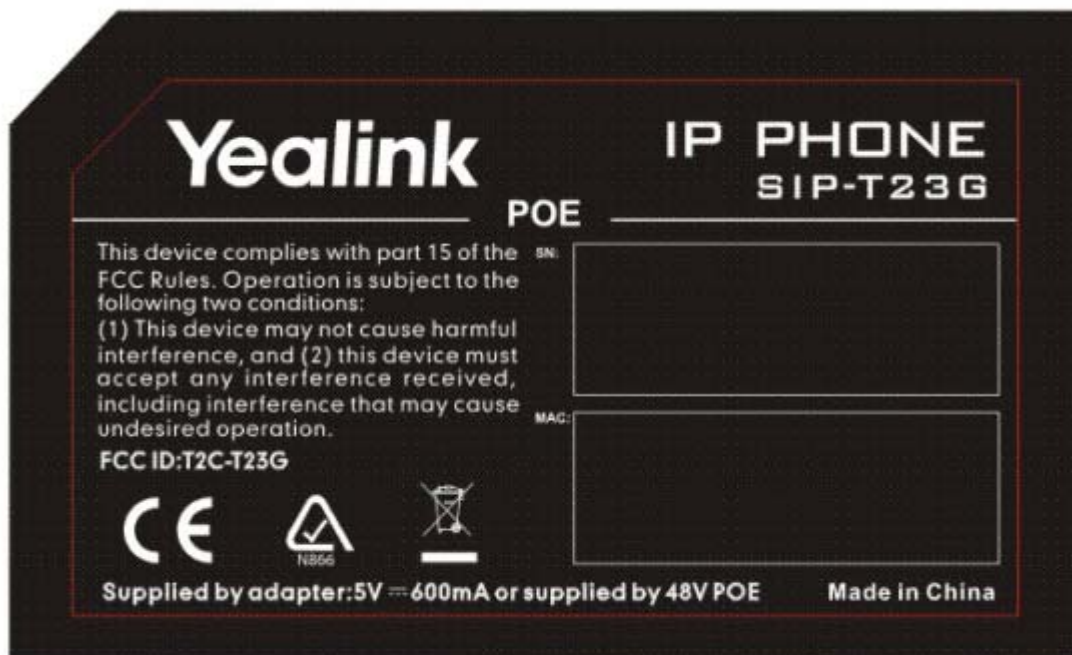
EN 60950-1

Safety of information technology equipment

Part 1-General requirements

Report reference No	RSZ141008002-03
Compiled by (+ signature)	Alan Ao 
Approved by (+ signature)	Safety Engineer: Ryan Zhang 
Date of issue	2014-10-31
Testing laboratory	Bay Area Compliance Laboratories Corp. (Shenzhen)
Address	6/F, the 3rd Phase of WanLi Industrial Building, ShiHua Road, FuTian Free Trade Zone, ShenZhen, Guangdong, P.R.China
Testing location	As above
Applicant's name	Yealink (Xiamen) Network Technology Co.,Ltd
Address.....	4th-5th Floor, South Building, NO.63 WangHai Road, 2nd Software Park, Xiamen, China
Manufacturer's name.....	Same as applicant
Address.....	
Factory's name	----
Address.....	
Standard	EN 60950-1:2006+A11:2009+A1:2010+A12:2011+A2:2013
Test sample(s) received	2014-10-13
Test in period	2014-10-13 To 2014-10-24
Procedure deviation	N.A.
Non-standard test method	N.A.
This test report is for the customer shown above and their specific product only. It may not be duplicated or used in part without prior written consent from Bay Area Compliance Laboratories Corp. (Shenzhen). This report must not be used by the customer to claim product certification, approval, or endorsement by NVLAP, NIST, or any agency of the Federal Government. This report is valid only with a valid digital signature. The digital signature may be available only under the Adobe software above version 7.0.	
Type of test object	IP Phone
Trademark	---
Test model/type reference	SIP-T23G
Manufacturer	Yealink (Xiamen) Network Technology Co., Ltd
Rating	Supplied by adapter: 5V---0.6A or supplied by 48V POE

Copy of marking plate



Draft

Test item particulars	
Equipment mobility	<input checked="" type="checkbox"/> movable <input type="checkbox"/> hand-held <input type="checkbox"/> transportable <input type="checkbox"/> stationary <input type="checkbox"/> for building-in <input type="checkbox"/> direct plug-in
Connection to the mains	<input type="checkbox"/> pluggable equipment <input type="checkbox"/> type A <input type="checkbox"/> type B <input type="checkbox"/> detachable power supply cord <input type="checkbox"/> non-detachable power supply cord <input checked="" type="checkbox"/> not directly connected to the mains
Operating condition	<input checked="" type="checkbox"/> continuous <input type="checkbox"/> rated operating / resting time:
Access location	<input checked="" type="checkbox"/> operator accessible <input type="checkbox"/> restricted access location
Over voltage category (OVC)	<input checked="" type="checkbox"/> OVC I <input type="checkbox"/> OVC II <input type="checkbox"/> OVC III <input type="checkbox"/> OVC IV <input type="checkbox"/> other:
Mains supply tolerance (%)	N/A
Tested for IT power systems	<input type="checkbox"/> Yes <input checked="" type="checkbox"/> No
IT testing, phase-phase voltage (V)	N/A
Class of equipment	<input type="checkbox"/> Class I <input type="checkbox"/> Class II <input checked="" type="checkbox"/> Class III <input type="checkbox"/> Not classified
Considered current rating of protective device as part of the building installation (A)	N/A
Pollution degree (PD)	<input type="checkbox"/> PD 1 <input checked="" type="checkbox"/> PD 2 <input type="checkbox"/> PD 3
IP protection class	IP20
Altitude during operation (m)	Up to 2000
Altitude of test laboratory (m)	Below 2000
Laser or LED Classification	LED indicators provided
Max. Specified ambient temperature(°C)	40°C
Mass of equipment (kg)	For base unit: Approx 0.61kg (without adapter and accessories) For handset unit: Approx 0.15kg (without accessories)
Possible test case verdicts	
- test case does not apply to the test object.....: N(.A.)	
- test object does meet the requirement.....: P(ass)	
- test object does not meet the requirement.....: F(ail)	
General remarks:	
"(see remark #)" refers to a remark appended to the report. (see appended table)" refers to a table appended to the report. The test results presented in this report relate only to the object tested. This report shall not be reproduced except in full without the written approval of the testing laboratory. Throughout this report a <input type="checkbox"/> comma/ <input checked="" type="checkbox"/> point is used as the decimal separator.	

General product information:

The product tested with model name SIP-T23G is a IP Phone, which supplied by an approved adapter or 48V POE, for indoor use only.

The EUT consists of

- IP Phone;

Model: SIP-T23P

- Approved adapter for IP Phone.

Model number: NSA6EE-050060

Input:100-240V~ 50/60Hz, 0.2A

Output: 5V---0.6A

Model number: OH-1006B0500600U-VDE

Input:100-240V~ 50/60Hz, 0.25A

Output: 5V---0.6A

See appended table 1.5.1

Draft

EN 60950-1			
Clause	Requirement + Test	Result - Remark	Verdict

1	General		P
----------	----------------	--	----------

1.5	Components		P
1.5.1	General		P
	Comply with IEC60950-1 or relevant component standard	Components that were found to affect safety aspects comply with the requirements of this standard or within the safety aspects of the relevant IEC component standards. (see appended table 1.5.1)	P
1.5.2	Evaluation and testing of components	<p>Certified components are used in accordance with their ratings, certifications and they comply with applicable parts of this Standard.</p> <p>Components not certified are used in accordance with their ratings and they comply with IEC60950-1 and the relevant component Standard.</p> <p>Components, for which no relevant IEC Standard exist, have been tested under the condition occurring in the equipment, using applicable parts of IEC60950-1.</p>	P
1.5.3	Thermal controls	No thermal controls	N
1.5.4	Transformers	No transformers	N
1.5.5	Interconnecting cables	The interconnecting cables contain only SELV.	P
1.5.6	Capacitors bridging insulation	Class III equipment.	N
1.5.7	Resistors bridging insulation	Class III equipment.	N
1.5.7.1	Resistors bridging functional, basic or supplementary insulation		N
1.5.7.2	Resistors bridging double or reinforced insulation between a.c. mains and other circuits	Not used.	N
1.5.7.3	Resistors bridging double or reinforced insulation between a.c. mains and antenna or coaxial cable	Not used.	N
1.5.8	Components in equipment for IT power systems	Not intend for IT power distribution systems.	N
1.5.9	Surge suppressors		N
1.5.9.1	General		N
1.5.9.2	Protection of VDRs		N
1.5.9.3	Bridging of functional insulation by a VDR		N

EN 60950-1			
Clause	Requirement + Test	Result - Remark	Verdict

1.5.9.4	Bridging of basic insulation by a VDR		N
1.5.9.5	Bridging of supplementary, double or reinforced insulation by a VDR		N

1.6	Power interface		P
1.6.1	AC power distribution systems	The equipment is regarded as class III equipment.	N
1.6.2	Input current	(see appended table 1.6.2)	P
1.6.3	Voltage limit of hand-held equipment	The rated voltage of the equipment does not exceed 250V	P
1.6.4	Neutral conductor	Class III equipment.	N

1.7	Marking and instructions		P
1.7.1	Power rating and identification markings		P
1.7.1.1	Power rating marking		P
	Multiple mains supply connections.....		N
	Rated voltage(s) or voltage range(s) (V)	5V or POE 48V	P
	Symbol for nature of supply, for d.c. only	==	P
	Rated frequency or rated frequency range (Hz).....		N
	Rated current (mA or A)	0.6A	P
1.7.1.2	Identification markings		P
	Manufacturer's name or trade-mark or identification mark	Yealink (Xiamen) Network Technology Co., Ltd	P
	Model identification or type reference	SIP-T23G	P
	Symbol for Class II equipment only	Class III equipment	N
	Other markings and symbols	CE mark	P
1.7.1.3	Use of graphical symbols	Operating/safety instructions made available to the user.	N
1.7.2	Safety instructions and marking	Class III equipment	N
1.7.2.1	General		N
1.7.2.2	Disconnect devices		N
	-for permanently connected equipment, a readily accessible disconnect device shall be incorporated in the building installation wiring	Neither a PLUGGABLE EQUIPMENT TYPE B nor a PERMANENTLY CONNECTED EQUIPMENT	N
	-for pluggable equipment, the socket-outlet shall be installed near the equipment and shall be easily accessible		N
1.7.2.3	Overcurrent protective device		N
1.7.2.4	IT power distribution systems	Class III equipment	N

EN 60950-1			
Clause	Requirement + Test	Result - Remark	Verdict
1.7.2.5	Operator access with a tool		N
1.7.2.6	Ozone	No ozone produced	N
1.7.3	Short duty cycles	Continuous operation.	N
1.7.4	Supply voltage adjustment	No voltage selector	N
	Methods and means of adjustment; reference to installation instructions		N
1.7.5	Power outlets on the equipment	No standard power outlet.	N
1.7.6	Fuse identification (marking, special fusing characteristics, cross-reference)		N
1.7.7	Wiring terminals		N
1.7.7.1	Protective earthing and bonding terminals	No protective earthing and bonding terminals	N
1.7.7.2	Terminals for a.c. mains supply conductors	The equipment not for permanent connection or provided with a non-detachable power supply cord	N
1.7.7.3	Terminals for d.c. mains supply conductors	The equipment not intended to be connected to DC mains	N
1.7.8	Controls and indicators	LED indicators provided	P
1.7.8.1	Identification, location and marking	Such marking do not affect safety.	P
1.7.8.2	Colours	For functional indication a LED lights when the equipment is operating.	P
1.7.8.3	Symbols according to IEC 60417	The equipment not intended to be connected to DC mains	N
1.7.8.4	Markings using figures		N
1.7.9	Isolation of multiple power sources	Single DC source input.	N
1.7.10	Thermostats and other regulating devices	No thermostats or other regulating devices	N
1.7.11	Durability	Rubbed with a cloth soaked with water for 15s then again for 15s with cloth soaked with petroleum spirit, after this test, the marking on the label did not fade there are no curling nor lifting of the label edge.	P
1.7.12	Removable parts	No marking located on a removable part.	N
1.7.13	Replaceable batteries	No replaceable batteries	N
	Language(s)	English	—
1.7.14	Equipment for restricted access locations		N
2	Protection from hazards		P

EN 60950-1			
Clause	Requirement + Test	Result - Remark	Verdict
2.1	Protection from electric shock and energy hazards		P
2.1.1	Protection in operator access areas	Protected by enclosure, no operator access areas	N
2.1.1.1	Access to energized parts		P
	Test by inspection	Inspected and as below.	P
	Test with test finger (Figure 2A)		P
	Test with test pin (Figure 2B)		N
	Test with test probe (Figure 2C)		N
2.1.1.2	Battery compartments		N
2.1.1.3	Access to ELV wiring	No ELV wiring in operator accessible area	N
	Working voltage (V_{peak} or V_{rms}); minimum distance through insulation (mm)		—
2.1.1.4	Access to hazardous voltage circuit wiring		N
2.1.1.5	Energy hazards	No energy hazards presents in operator access area.	P
2.1.1.6	Manual controls		N
2.1.1.7	Discharge of capacitors in equipment		N
	Measured voltage (V); time-constant (s)		—
2.1.1.8	Energy hazards – d.c. mains supply		N
	a) Capacitor connected to the d.c. mains supply ..		N
	b) Internal battery connected to the d.c. mains supply		N
2.1.1.9	Audio amplifiers		N
2.1.2	Protection in service access areas	No bare parts operating at HAZARDOUS VOLTAGES in a service access area.	P
2.1.3	Protection in restricted access locations	Equipment not intended for installation in restricted access locations	N

2.2	SELV circuits		P
2.2.1	General requirements	Unit is Class III equipment supplied by SELV.	P
2.2.2	Voltages under normal conditions (V)		P
2.2.3	Voltages under fault conditions (V)		P
2.2.4	Connection of SELV circuits to other circuits	SELV separated from Primary by Reinforced insulation. Evaluated as part of Power Supply Certification.	P

2.3	TNV circuits		N
------------	---------------------	--	----------

EN 60950-1			
Clause	Requirement + Test	Result - Remark	Verdict
2.3.1	Limits		N
	Type of TNV circuits		—
2.3.2	Separation from other circuits and from accessible parts		N
2.3.2.1	General requirements		N
2.3.2.2	Protection by basic insulation		N
2.3.2.3	Protection by earthing		N
2.3.2.4	Protection by other constructions		N
2.3.3	Separation from hazardous voltages		N
	Insulation employed.....		—
2.3.4	Connection of TNV circuits to other circuits		N
	Insulation employed.....		—
2.3.5	Test for operating voltages generated externally		N
2.4	Limited current circuits	<i>No limited current circuits</i>	N
2.4.1	General requirements		N
2.4.2	Limit values		N
	Frequency (Hz).....		—
	Measured current (mA).....		—
	Measured voltage (V)		—
	Measured circuit capacitance (nF or μ F).....		—
2.4.3	Connection of limited current circuits to other circuits		N
2.5	Limited power sources		N
	a) Inherently limited output		N
	b) Impedance limited output		N
	c) Regulating network limited output under normal operating and single fault condition		N
	d) Overcurrent protective device limited output		N
	Max. output voltage (V), max. output current (A), max. apparent power (VA)		—
	Current rating of overcurrent protective device (A)		—
	Use of integrated circuit (IC) current limiters		N
2.6	Provisions for earthing and bonding		N
2.6.1	Protective earthing	Class III equipment.	N
2.6.2	Functional earthing		N
2.6.3	Protective earthing and protective bonding conductors		N

EN 60950-1			
Clause	Requirement + Test	Result - Remark	Verdict
2.6.3.1	General		N
2.6.3.2	Size of protective earthing conductors		N
	Rated current (A), cross-sectional area (mm ²), AWG		—
2.6.3.3	Size of protective bonding conductors		N
	Rated current (A), cross-sectional area (mm ²), AWG		—
2.6.3.4	Resistance of earthing conductors and their terminations; resistance (Ω), voltage drop (V), test current (A), duration (min)		N
2.6.3.5	Colour of insulation		N
2.6.4	Terminals		N
2.6.4.1	General		N
2.6.4.2	Protective earthing and bonding terminals		N
	Rated current (A), type, nominal thread diameter (mm)		—
2.6.4.3	Separation of the protective earthing conductor from protective bonding conductors		N
2.6.5	Integrity of protective earthing		N
2.6.5.1	Interconnection of equipment		N
2.6.5.2	Components in protective earthing conductors and protective bonding conductors		N
2.6.5.3	Disconnection of protective earth		N
2.6.5.4	Parts that can be removed by an operator		N
2.6.5.5	Parts removed during servicing		N
2.6.5.6	Corrosion resistance		N
2.6.5.7	Screws for protective bonding		N
2.6.5.8	Reliance on telecommunication network or cable distribution system		N

2.7	Overcurrent and earth fault protection in primary circuits		N
2.7.1	Basic requirements	Class III equipment	N
	Instructions when protection relies on building installation		N
2.7.2	Faults not simulated in 5.3.7		N
2.7.3	Short-circuit backup protection		N
2.7.4	Number and location of protective devices		N
2.7.5	Protection by several devices		N
2.7.6	Warning to service personnel		N

2.8	Safety interlocks	N
------------	--------------------------	----------

EN 60950-1			
Clause	Requirement + Test	Result - Remark	Verdict
2.8.1	General principles	No safety interlocks	N
2.8.2	Protection requirements		N
2.8.3	Inadvertent reactivation		N
2.8.4	Fail-safe operation		N
	Protection against extreme hazard		N
2.8.5	Moving parts		N
2.8.6	Overriding		N
2.8.7	Switches, relays and their related circuits		N
2.8.7.1	Separation distances for contact gaps and their related circuits (mm)		N
2.8.7.2	Overload test		N
2.8.7.3	Endurance test		N
2.8.7.4	Electric strength test		N
2.8.8	Mechanical actuators		N
2.9	Electrical insulation		P
2.9.1	Properties of insulating materials	Natural rubber, asbestos or hygroscopic material not used	P
2.9.2	Humidity conditioning		N
	Relative humidity (%), temperature (°C)		—
2.9.3	Grade of insulation	Functional insulation	P
2.9.4	Separation from hazardous voltages	Have evaluated in approved direct plug-in adapter.	P
	Method(s) used	Method 2 used	—
2.10	Clearances, creepage distances and distances through insulation		N
2.10.1	General		N
2.10.1.1	Frequency		N
2.10.1.2	Pollution degrees		N
2.10.1.3	Reduced values for functional insulation		N
2.10.1.4	Intervening unconnected conductive parts		N
2.10.1.5	Insulation with varying dimensions		N
2.10.1.6	Special separation requirements		N
2.10.1.7	Insulation in circuits generating starting pulses		N
2.10.2	Determination of working voltage		N
2.10.2.1	General		N
2.10.2.2	RMS working voltage		N
2.10.2.3	Peak working voltage		N
2.10.3	Clearances		N

EN 60950-1			
Clause	Requirement + Test	Result - Remark	Verdict
2.10.3.1	General		N
2.10.3.2	Mains transient voltages		N
	a) AC mains supply		N
	b) Earthed d.c. mains supplies		N
	c) Unearthed d.c. mains supplies		N
	d) Battery operation		N
2.10.3.3	Clearances in primary circuits		N
2.10.3.4	Clearances in secondary circuits		N
2.10.3.5	Clearances in circuits having starting pulses		N
2.10.3.6	Transients from a.c. mains supply		N
2.10.3.7	Transients from d.c. mains supply		N
2.10.3.8	Transients from telecommunication networks and cable distribution systems		N
2.10.3.9	Measurement of transient voltage levels		N
	a) Transients from a mains supply		N
	For an a.c. mains supply		N
	For a d.c. mains supply		N
	b) Transients from a telecommunication network :		N
2.10.4	Creepage distances		N
2.10.4.1	General		N
2.10.4.2	Material group and comparative tracking index		N
	CTI tests		—
2.10.4.3	Minimum creepage distances		N
2.10.5	Solid insulation		N
2.10.5.1	General		N
2.10.5.2	Distances through insulation		N
2.10.5.3	Insulating compound as solid insulation		N
2.10.5.4	Semiconductor devices		N
2.10.5.5	Cemented joints		N
2.10.5.6	Thin sheet material – General		N
2.10.5.7	Separable thin sheet material		N
	Number of layers (pcs)		—
2.10.5.8	Non-separable thin sheet material		N
2.10.5.9	Thin sheet material – standard test procedure		N
	Electric strength test		—
2.10.5.10	Thin sheet material – alternative test procedure		N
	Electric strength test		—
2.10.5.11	Insulation in wound components		N

EN 60950-1			
Clause	Requirement + Test	Result - Remark	Verdict
2.10.5.12	Wire in wound components		N
	Working voltage		N
	a) Basic insulation not under stress		N
	b) Basic, supplementary, reinforced insulation		N
	c) Compliance with Annex U		N
	Two wires in contact inside wound component; angle between 45° and 90°		N
2.10.5.13	Wire with solvent-based enamel in wound components		N
	Electric strength test		—
	Routine test		N
2.10.5.14	Additional insulation in wound components		N
	Working voltage		N
	- Basic insulation not under stress		N
	- Supplementary, reinforced insulation		N
2.10.6	Construction of printed boards		N
2.10.6.1	Uncoated printed boards		N
2.10.6.2	Coated printed boards		N
2.10.6.3	Insulation between conductors on the same inner surface of a printed board		N
2.10.6.4	Insulation between conductors on different layers of a printed board		N
	Distance through insulation		N
	Number of insulation layers (pcs).....		N
2.10.7	Component external terminations		N
2.10.8	Tests on coated printed boards and coated components		N
2.10.8.1	Sample preparation and preliminary inspection		N
2.10.8.2	Thermal conditioning		N
2.10.8.3	Electric strength test		N
2.10.8.4	Abrasion resistance test		N
2.10.9	Thermal cycling		N
2.10.10	Test for Pollution Degree 1 environment and insulating compound		N
2.10.11	Tests for semiconductor devices and cemented joints		N
2.10.12	Enclosed and sealed parts		N
3	Wiring, connections and supply		P
3.1	General		P
3.1.1	Current rating and overcurrent protection	Class III equipment.	N

EN 60950-1			
Clause	Requirement + Test	Result - Remark	Verdict
3.1.2	Protection against mechanical damage	Wireways are smooth and free from sharp edges	P
3.1.3	Securing of internal wiring	The wires are positioned in such a manner that prevents excessive strain, loosening of terminal connections and damage of conductor insulation.	P
3.1.4	Insulation of conductors		P
3.1.5	Beads and ceramic insulators		N
3.1.6	Screws for electrical contact pressure	No screws for electrical contact pressure	N
3.1.7	Insulating materials in electrical connections	No insulating materials in electrical connections	N
3.1.8	Self-tapping and spaced thread screws	No self-tapping and spaced thread screws for the connection of current-carrying	N
3.1.9	Termination of conductors		N
	10 N pull test		N
3.1.10	Sleeving on wiring	No sleeving	N
3.2	Connection to a mains supply		N
3.2.1	Means of connection	Class III equipment	N
3.2.1.1	Connection to an a.c. mains supply		N
3.2.1.2	Connection to a d.c. mains supply		N
3.2.2	Multiple supply connections		N
3.2.3	Permanently connected equipment		N
	Number of conductors, diameter of cable and conduits (mm)		—
3.2.4	Appliance inlets		N
3.2.5	Power supply cords		N
3.2.5.1	AC power supply cords		N
	Type		—
	Rated current (A), cross-sectional area (mm ²), AWG		—
3.2.5.2	DC power supply cords		N
3.2.6	Cord anchorages and strain relief		N
	Mass of equipment (kg), pull (N)		—
	Longitudinal displacement (mm)		—
3.2.7	Protection against mechanical damage		N
3.2.8	Cord guards		N

EN 60950-1			
Clause	Requirement + Test	Result - Remark	Verdict

	Diameter or minor dimension D (mm); test mass (g)		—
	Radius of curvature of cord (mm).....		—
3.2.9	Supply wiring space		N

3.3	Wiring terminals for connection of external conductors		N
3.3.1	Wiring terminals	Class III equipment	N
3.3.2	Connection of non-detachable power supply cords		N
3.3.3	Screw terminals		N
3.3.4	Conductor sizes to be connected		N
	Rated current (A), cord/cable type, cross-sectional area (mm ²).....		—
3.3.5	Wiring terminal sizes		N
	Rated current (A), type, nominal thread diameter (mm)		—
3.3.6	Wiring terminal design		N
3.3.7	Grouping of wiring terminals		N
3.3.8	Stranded wire		N

3.4	Disconnection from the mains supply		N
3.4.1	General requirement	Class III equipment	N
3.4.2	Disconnect devices		N
3.4.3	Permanently connected equipment		N
3.4.4	Parts which remain energized		N
3.4.5	Switches in flexible cords		N
3.4.6	Number of poles - single-phase and d.c. equipment		N
3.4.7	Number of poles - three-phase equipment		N
3.4.8	Switches as disconnect devices		N
3.4.9	Plugs as disconnect devices		N
3.4.10	Interconnected equipment		N
3.4.11	Multiple power sources		N

3.5	Interconnection of equipment		P
3.5.1	General requirements	Considered.	P
3.5.2	Types of interconnection circuits	SELV circuit.	P
3.5.3	ELV circuits as interconnection circuits	No ELV.	N
3.5.4	Data ports for additional equipment	The EUT is powered from the approved adapter considered as LPS	P

EN 60950-1			
Clause	Requirement + Test	Result - Remark	Verdict

4	Physical requirements		N
4.1	Stability		N
	Angle of 10°	Equipment with mass not exceeding 7kg and nor a floor-standing	N
	Test force (N)		N

4.2	Mechanical strength		P
4.2.1	General		P
	Rack-mounted equipment.		N
4.2.2	Steady force test, 10 N		N
4.2.3	Steady force test, 30 N		N
4.2.4	Steady force test, 250 N	250 N applied for top, side, bottom of metal enclosures of unit. No hazards as a result for enclosure push test.	P
4.2.5	Impact test		N
	Fall test		N
	Swing test		N
4.2.6	Drop test; height (mm)	Dropped from 750mm height for 3 times on different side of EUT, no hazards produced.	P
4.2.7	Stress relief test		N
4.2.8	Cathode ray tubes	No Cathode ray tubes	N
	Picture tube separately certified		N
4.2.9	High pressure lamps	No high pressure lamps	N
4.2.10	Wall or ceiling mounted equipment; force (N)	Wall mounted and applied 50N pull on EUT last for 1 min.	P
4.2.11	Rotating solid media		N
	Test to cover on the door.....		N

4.3	Design and construction		P
4.3.1	Edges and corners	All coners are smooth and rounded	P
4.3.2	Handles and manual controls; force (N).....		N
4.3.3	Adjustable controls		N
4.3.4	Securing of parts	No loosening of parts impairing creepage distances or clearances is likely to occur.	P
4.3.5	Connection by plugs and sockets	No plug or socket	P
4.3.6	Direct plug-in equipment		N

EN 60950-1			
Clause	Requirement + Test	Result - Remark	Verdict
	Torque		—
	Compliance with the relevant mains plug standard		N
4.3.7	Heating elements in earthed equipment	No heating elements	N
4.3.8	Batteries		N
	- Overcharging of a rechargeable battery		N
	- Unintentional charging of a non-rechargeable battery		N
	- Reverse charging of a rechargeable battery		N
	- Excessive discharging rate for any battery		N
4.3.9	Oil and grease	No oil and grease	N
4.3.10	Dust, powders, liquids and gases		N
4.3.11	Containers for liquids or gases		N
4.3.12	Flammable liquids		N
	Quantity of liquid (l)		N
	Flash point (°C)		N
4.3.13	Radiation		P
4.3.13.1	General		P
4.3.13.2	Ionizing radiation		N
	Measured radiation (pA/kg)		—
	Measured high-voltage (kV)		—
	Measured focus voltage (kV)		—
	CRT markings		—
4.3.13.3	Effect of ultraviolet (UV) radiation on materials		N
	Part, property, retention after test, flammability classification		N
4.3.13.4	Human exposure to ultraviolet (UV) radiation		N
4.3.13.5	Lasers (including laser diodes) and LEDs		P
4.3.13.5.1	Lasers (including laser diodes)		N
	Laser class		—
4.3.13.5.2	Light emitting diodes (LEDs)	LEDs are only used as indicating lights.	P
4.3.13.6	Other types		N
4.4	Protection against hazardous moving parts		P
4.4.1	General	No moving parts	N
4.4.2	Protection in operator access areas		N
	Household and home/office document/media shredders		N
4.4.3	Protection in restricted access locations		N

EN 60950-1			
Clause	Requirement + Test	Result - Remark	Verdict
4.4.4	Protection in service access areas		N
4.4.5	Protection against moving fan blades		N
4.4.5.1	General		N
	Not considered to cause pain or injury. a)		N
	Is considered to cause pain, not injury. b)		N
	Considered to cause injury. c)		N
4.4.5.2	Protection for users		N
	Use of symbol or warning		N
4.4.5.3	Protection for service persons		N
	Use of symbol or warning		N

4.5	Thermal requirements		P
4.5.1	General		P
4.5.2	Temperature tests		P
	Normal load condition per Annex L		—
4.5.3	Temperature limits for materials	(see appended table 4.5)	P
4.5.4	Touch temperature limits	(see appended table 4.5)	P
4.5.5	Resistance to abnormal heat		N

4.6	Openings in enclosures		P
4.6.1	Top and side openings	No opening	P
	Dimensions (mm)		—
4.6.2	Bottoms of fire enclosures	No fire enclosure necessary, see 4.7.2	N
	Construction of the bottom, dimensions (mm) ...:		—
4.6.3	Doors or covers in fire enclosures		N
4.6.4	Openings in transportable equipment		N
4.6.4.1	Constructional design measures		N
	Dimensions (mm)		—
4.6.4.2	Evaluation measures for larger openings		N
4.6.4.3	Use of metallized parts		N
4.6.5	Adhesives for constructional purposes		N
	Conditioning temperature (°C), time (weeks).....:		—

4.7	Resistance to fire		P
4.7.1	Reducing the risk of ignition and spread of flame	Method 1 is used.	P
	Method 1, selection and application of components wiring and materials		P

EN 60950-1			
Clause	Requirement + Test	Result - Remark	Verdict

	Method 2, application of all of simulated fault condition tests	Method 2 is not used for the evaluation of the fire hazard.	N
4.7.2	Conditions for a fire enclosure	Refer below.	P
4.7.2.1	Parts requiring a fire enclosure	All components are mounted on V-1 PCB. The power adapter complies with LPS No fire enclosure required.	N
4.7.2.2	Parts not requiring a fire enclosure	See above	P
4.7.3	Materials		P
4.7.3.1	General	PCB rated min. V-1 and enclosure rated min. HB	P
4.7.3.2	Materials for fire enclosures		N
4.7.3.3	Materials for components and other parts outside fire enclosures		N
4.7.3.4	Materials for components and other parts inside fire enclosures		N
4.7.3.5	Materials for air filter assemblies	No air filter assemblies	N
4.7.3.6	Materials used in high-voltage components	No high-voltage components	N

5	Electrical requirements and simulated abnormal conditions		P
5.1	Touch current and protective conductor current		N
5.1.1	General		N
5.1.2	Configuration of equipment under test (EUT)		N
5.1.2.1	Single connection to an a.c. mains supply		N
5.1.2.2	Redundant multiple connections to an a.c. mains supply		N
5.1.2.3	Simultaneous multiple connections to an a.c. mains supply		N
5.1.3	Test circuit		N
5.1.4	Application of measuring instrument		N
5.1.5	Test procedure		N
5.1.6	Test measurements		N
	Supply voltage (V)		—
	Measured touch current (mA)		—
	Max. allowed touch current (mA)		—
	Measured protective conductor current (mA)		—
	Max. allowed protective conductor current (mA)		—
5.1.7	Equipment with touch current exceeding 3,5 mA		N
5.1.7.1	General		N
5.1.7.2	Simultaneous multiple connections to the supply		N

EN 60950-1			
Clause	Requirement + Test	Result - Remark	Verdict
5.1.8	Touch currents to telecommunication networks and cable distribution systems and from telecommunication networks		N
5.1.8.1	Limitation of the touch current to a telecommunication network or to a cable distribution system		N
	Supply voltage (V)		—
	Measured touch current (mA)		—
	Max. allowed touch current (mA)		—
5.1.8.2	Summation of touch currents from telecommunication networks		N
	a) EUT with earthed telecommunication ports		N
	b) EUT whose telecommunication ports have no reference to protective earth		N
5.2	Electric strength		N
5.2.1	General		N
5.2.2	Test procedure		N
5.3	Abnormal operating and fault conditions		P
5.3.1	Protection against overload and abnormal operation	Considered	P
5.3.2	Motors		N
5.3.3	Transformers		N
5.3.4	Functional insulation.....	Functional insulation complies with the requirements (c).	P
5.3.5	Electromechanical components		N
5.3.6	Audio amplifiers in ITE		N
5.3.7	Simulation of faults	(see appended table 5.3)	P
5.3.8	Unattended equipment	No thermostat, temperature limiter or thermal cut-out.	N
5.3.9	Compliance criteria for abnormal operating and fault conditions	(see appended table 5.3)	P
5.3.9.1	During the tests	No fire or molten metal occurred and no deformation of enclosure during the tests.	P
5.3.9.2	After the tests		P
6	Connection to telecommunication networks		N
6.1	Protection of telecommunication network service persons, and users of other equipment connected to the network, from hazards in the equipment		N
6.1.1	Protection from hazardous voltages		N

EN 60950-1			
Clause	Requirement + Test	Result - Remark	Verdict
6.1.2	Separation of the telecommunication network from earth		N
6.1.2.1	Requirements		N
	Supply voltage (V)		—
	Current in the test circuit (mA)		—
6.1.2.2	Exclusions		N
6.2	Protection of equipment users from overvoltages on telecommunication networks		N
6.2.1	Separation requirements		N
6.2.2	Electric strength test procedure		N
6.2.2.1	Impulse test		N
6.2.2.2	Steady-state test		N
6.2.2.3	Compliance criteria		N
6.3	Protection of the telecommunication wiring system from overheating		N
	Max. output current (A)		—
	Current limiting method		—
7	Connection to cable distribution systems		N
7.1	General		N
7.2	Protection of cable distribution system service persons, and users of other equipment connected to the system, from hazardous voltages in the equipment		N
7.3	Protection of equipment users from overvoltages on the cable distribution system		N
7.4	Insulation between primary circuits and cable distribution systems		N
7.4.1	General		N
7.4.2	Voltage surge test		N
7.4.3	Impulse test		N
Annex A	Tests for resistance to heat and fire		N
A.1	Flammability test for fire enclosures of movable equipment having a total mass exceeding 18 kg, and of stationary equipment (see 4.7.3.2)		N
A.1.1	Samples.....		—
	Wall thickness (mm)		—
A.1.2	Conditioning of samples; temperature (°C)		N
A.1.3	Mounting of samples		N
A.1.4	Test flame (see IEC 60695-11-3)		N

EN 60950-1			
Clause	Requirement + Test	Result - Remark	Verdict
	Flame A, B, C or D		—
A.1.5	Test procedure		N
A.1.6	Compliance criteria		N
	Sample 1 burning time (s)		—
	Sample 2 burning time (s)		—
	Sample 3 burning time (s)		—
A.2	Flammability test for fire enclosures of movable equipment having a total mass not exceeding 18 kg, and for material and components located inside fire enclosures (see 4.7.3.2 and 4.7.3.4)		N
A.2.1	Samples, material.....		—
	Wall thickness (mm)		—
A.2.2	Conditioning of samples; temperature (°C)		N
A.2.3	Mounting of samples		N
A.2.4	Test flame (see IEC 60695-11-4)		N
	Flame A, B or C		—
A.2.5	Test procedure		N
A.2.6	Compliance criteria		N
	Sample 1 burning time (s)		—
	Sample 2 burning time (s)		—
	Sample 3 burning time (s)		—
A.2.7	Alternative test acc. to IEC 60695-11-5, cl. 5 and 9		N
	Sample 1 burning time (s)		—
	Sample 2 burning time (s)		—
	Sample 3 burning time (s)		—
A.3	Hot flaming oil test (see 4.6.2)		N
A.3.1	Mounting of samples		N
A.3.2	Test procedure		N
A.3.3	Compliance criterion		N

Annex B	Motor tests under abnormal conditions (see 4.7.2.2 and 5.3.2)	N
B.1	General requirements	N
	Position	—
	Manufacturer	—
	Type	—
	Rated values	—
B.2	Test conditions	N
B.3	Maximum temperatures	N
B.4	Running overload test	N

EN 60950-1			
Clause	Requirement + Test	Result - Remark	Verdict

B.5	Locked-rotor overload test		N
	Test duration (days)		—
	Electric strength test: test voltage (V)		—
B.6	Running overload test for d.c. motors in secondary circuits		N
B.6.1	General		N
B.6.2	Test procedure		N
B.6.3	Alternative test procedure		N
B.6.4	Electric strength test; test voltage (V)		N
B.7	Locked-rotor overload test for d.c. motors in secondary circuits		N
B.7.1	General		N
B.7.2	Test procedure		N
B.7.3	Alternative test procedure		N
B.7.4	Electric strength test; test voltage (V)		N
B.8	Test for motors with capacitors		N
B.9	Test for three-phase motors		N
B.10	Test for series motors		N
	Operating voltage (V)		—

Annex C	Transformers (see 1.5.4 and 5.3.3)		N
	Position		—
	Manufacturer		—
	Type		—
	Rated values		—
	Method of protection.....		—
C.1	Overload test		N
C.2	Insulation		N
	Protection from displacement of windings.....		N

Annex D	Measuring instruments for touch-current testes(see 5.1.4)		N
D.1	Measuring instrument		N
D.2	Alternative measuring instrument		N

Annex E	Temperature rise of a winding (see 1.4.13)		N
----------------	---	--	----------

Annex F	Measurement of clearances and creepage distances (see 2.10 and Annex G)		N
----------------	--	--	----------

Annex G	Alternative method for determining minimum clearances		N
----------------	--	--	----------

EN 60950-1			
Clause	Requirement + Test	Result - Remark	Verdict
G.1	Clearances		N
G.1.1	General		N
G.1.2	Summary of the procedure for determining minimum clearances		N
G.2	Determination of mains transient voltage (V)		N
G.2.1	AC mains supply		N
G.2.2	Earthed d.c. mains supplies		N
G.2.3	Unearthed d.c. mains supplies		N
G.2.4	Battery operation		N
G.3	Determination of telecommunication network transient voltage (V)		N
G.4	Determination of required withstand voltage (V)		N
G.4.1	Mains transients and internal repetitive peaks		N
G.4.2	Transients from telecommunication networks		N
G.4.3	Combination of transients		N
G.4.4	Transients from cable distribution systems		N
G.5	Measurement of transient voltages (V)		N
	a) Transients from a mains supply		N
	For an a.c. mains supply		N
	For a d.c. mains supply		N
	b) Transients from a telecommunication network		N
G.6	Determination of minimum clearances		N
Annex H	Ionizing radiation (see 4.3.13)		N
Annex J	Table of electrochemical potentials (see 2.6.5.6)		N
	Metal(s) used		—
Annex K	Thermal controls (see 1.5.3 and 5.3.8)		N
K.1	Making and breaking capacity		N
K.2	Thermostat reliability; operating voltage (V)		N
K.3	Thermostat endurance test; operating voltage (V)		N
K.4	Temperature limiter endurance; operating voltage (V)		N
K.5	Thermal cut-out reliability		N
K.6	Stability of operation		N
Annex L	Normal load conditions for same types of electrical business equipment (see 1.2.2.1 and 4.5.2)		N

EN 60950-1			
Clause	Requirement + Test	Result - Remark	Verdict
L.1	Typewriters		N
L.2	Adding machines and cash registers		N
L.3	Erasers		N
L.4	Pencil sharpeners		N
L.5	Duplicators and copy machines		N
L.6	Motor-operated files		N
L.7	Other business equipment	See appended table 1.6.2	P

Annex M	Criteria for telephone ringing signals (see 2.3.1)	N
M.1	Introduction	N
M.2	Method A	N
M.3	Method B	N
M.3.1	Ringing signal	N
M.3.1.1	Frequency (Hz)	—
M.3.1.2	Voltage (V)	—
M.3.1.3	Cadence; time (s), voltage (V)	—
M.3.1.4	Single fault current (mA)	—
M.3.2	Tripping device and monitoring voltage	N
M.3.2.1	Conditions for use of a tripping device or a monitoring voltage	N
M.3.2.2	Tripping device	N
M.3.2.3	Monitoring voltage (V)	N

Annex N	Impulse test generators (see 1.5.7.2, 1.5.7.3, 2.10.3.9, 6.2.2.1, 7.3.2, 7.4.3 and Clause G.5)	N
N.1	ITU-T impulse test generators	N
N.2	IEC 60065 impulse test generator	N

Annex P	Normative references	—
----------------	-----------------------------	---

Annex Q	Voltage dependent resistors (VDRs) (see 1.5.9.1)	N
	a) Preferred climatic categories	N
	b) Maximum continuous voltage	N
	c) Pulse current	N
	Body of the VDR Test according to IEC 60695-11-5	N
	Body of the VDR. Flammability class of material (min. V-1)	N

EN 60950-1			
Clause	Requirement + Test	Result - Remark	Verdict

Annex R	Examples of requirements for quality control programmes		N
R.1	Minimum separation distances for unpopulated coated printed boards (see 2.10.6.2)		N
R.2	Reduced clearances (see 2.10.3)		N

Annex S	Procedure for impulse testing (see 6.2.2.3)		N
S.1	Test equipment		N
S.2	Test procedure		N
S.3	Examples of waveforms during impulse testing		N

Annex T	Guidance on protection against ingress of water (see 1.1.2)		N
			—

Annex U	Insulated winding wires for use without interleaved insulation (see 2.10.5.4)		N
			—

Annex V	AC power distribution systems (see 1.6.1)		N
V.1	Introduction		N
V.2	TN power distribution systems		N

Annex W	Summation of touch currents		N
W.1	Touch current from electronic circuits		N
W.1.1	Floating circuits		N
W.1.2	Earthed circuits		N
W.2	Interconnection of several equipments		N
W.2.1	Isolation		N
W.2.2	Common return, isolated from earth		N
W.2.3	Common return, connected to protective earth		N

Annex X	Maximum heating effect in transformer tests (see clause C.1)		N
X.1	Determination of maximum input current		N
X.2	Overload test procedure		N

Annex Y	Ultraviolet light conditioning test (see 4.3.13.3)		N
Y.1	Test apparatus		N
Y.2	Mounting of test samples		N
Y.3	Carbon-arc light-exposure apparatus		N
Y.4	Xenon-arc light exposure apparatus		N

EN 60950-1			
Clause	Requirement + Test	Result - Remark	Verdict

Annex Z	Overvoltage categories (see 2.10.3.2 and Clause G.2)	N
Annex AA	Mandrel test (see 2.10.5.8)	N

Annex BB	Changes in the second edition	—
-----------------	--------------------------------------	----------

Annex CC	Evaluation of integrated circuit (IC) current limiters	N
CC.1	General	N
CC.2	Test program 1	—
CC.3	Test program 2	—
CC.4	Test program 3	—
CC.5	Compliance.....	N

Annex DD	Requirements for the mounting means of rack-mounted equipment	N
DD.1	General	N
DD.2	Mechanical strength test, variable N	—
DD.3	Mechanical strength test, 250N, including end stops	—
DD.4	Compliance.....	N

Annex EE	Household and home/office document/media shredders	N
EE.1	General	N
EE.2	Markings and instructions	N
	Use of markings or symbols.....	N
	Information of user instructions, maintenance and/or servicing instructions.....	N
EE.3	Inadvertent reactivation test	N
EE.4	Disconnection of power to hazardous moving parts	N
	Use of markings or symbols	N
EE.5	Protection against hazardous moving parts	N
	Test with test finger (Figure 2A)	—
	Test with wedge probe (Figure EE1 and EE2)	—

EN 60950-1			
Clause	Requirement + Test	Result - Remark	Verdict

EN 60950-1:2006+A11:2009+A1:2010+A12:2011+A2:2013 –CENELEC COMMON MODIFICATIONS			
	Clauses, subclauses, notes, tables and figures which are additional to those in IEC60950-1 and it's amendmets are prefixed "Z"		P
Contents (A2:2013)	Add the following annexes: Annex ZA (normative) Normative references to international publications with their corresponding European publications Annex ZB (normative) Special national conditions Annex ZC (informative) A-deviations Annex ZD (informative) IEC and CENELEC code designations for flexible cords		P
General	Delete all the "country" notes in the reference document according to the following list: 1.4.8 Note 2 1.5.1 Note 2 & 3 1.5.7.1 Note 1.5.8 Note 2 1.5.9.4 Note 1.7.2.1 Note 4, 5 & 6 2.2.3 Note 2.2.4 Note 2.3.2 Note 2.3.2.1 Note 2 2.3.4 Note 2 2.6.3.3 Note 2 & 3 2.7.1 Note 2.10.3.2 Note 2 2.10.5.13 Note 3 3.2.1.1 Note 3.2.4 Note 3 2.5.1 Note 2 4.3.6 Note 1 & 2 4.7 Note 4 4.7.2.2 Note 4.7.3.1 Note 2 5.1.7.1 Note 3 & 4 5.3.7 Note 1 6 Note 2 & 5 6.1.2.1 Note 2 6.1.2.2 Note 6.2.2 Note 6. 2.2.1 Note 2 6.2.2.2 Note 7.1 Note 3 7.2 Note 7.3 Note 1 & 2 G.2.1 Note 2 Annex H Note 2		P
General (A1:2010)	Delete all the "country" notes in the reference document (IEC 60950-1:2005/A1:2010) according to the following list: 1.5.7.1 Note 6.1.2.1 Note 2 6.2.2.1 Note 2 EE.3 Note		P
General (A2:2013)	Delete all the "country" notes in the reference document (IEC 60950-1:2005/A2:2013) according to the following list: 2.7.1 Note * 2.10.3.1 Note 2 6.2.2. Note * Note of secretary: Text of Common Modification remains unchanged.		P
1.1.1 (A1:2010)	Replace the text of NOTE 3 by the following. NOTE 3 The requirements of EN 60065 may also be used to meet safety requirements for multimedia equipment. See IEC Guide 112, Guide on the safety of multimedia equipment. For television sets EN 60065 applies.		P

EN 60950-1			
Clause	Requirement + Test	Result - Remark	Verdict
1.3.Z1	<p>Add the following subclause:</p> <p>1.3.Z1 Exposure to excessive sound pressure</p> <p>The apparatus shall be so designed and constructed as to present no danger when used for its intended purpose, either in normal operating conditions or under fault conditions, particularly providing protection against exposure to excessive sound pressures from headphones or earphones.</p> <p>NOTE Z1 A new method of measurement is described in EN 50332-1, Sound system equipment: Headphones and earphones associated with portable audio equipment - Maximum sound pressure level measurement methodology and limit considerations - Part 1: General method for "one package equipment", and in EN 50332-2, Sound system equipment: Headphones and earphones associated with portable audio equipment - Maximum sound pressure level measurement methodology and limit considerations - Part 2: Guidelines to associate sets with headphones coming from different manufacturers.</p>		N
(A12:2011)	<p>In EN 60950-1:2006/A12:2011</p> <p>Delete the addition of 1.3.Z1/EN 60950-1:2006</p> <p>Delete the definition of 1.2.3.Z1/EN 60950-1:2006/A1:2010</p>		P
1.5.1 (Added info*)	<p>Add the following NOTE:</p> <p>NOTE Z1 The use of certain substances in electrical and electronic equipment is restricted within the EU: see Directive 2002/95/EC. New Directive 2011/65/EU*</p>		P
1.7.2.1 (A1:2010)	<p>In addition, for a PORTABLE SOUND SYSTEM, the instructions shall include a warning that excessive sound pressure from earphones and headphones can cause hearing loss.</p>		N
1.7.2.1 (A12:2011)	<p>In EN 60950-1:2006/A12:2011</p> <p>Delete NOTE Z1 and the addition for Portable Sound System.</p> <p>Add the following clause and annex to the existing standard and amendments.</p>		N

EN 60950-1									
Clause	Requirement + Test	Result - Remark	Verdict						
2.7.1	<p>Replace the subclause as follows:</p> <p>Basic requirements</p> <p>To protect against excessive current, short-circuits and earth faults in PRIMARY CIRCUITS, protective devices shall be included either as integral parts of the equipment or as parts of the building installation, subject to the following, a), b) and c):</p> <p>a) except as detailed in b) and c), protective devices necessary to comply with the requirements of 5.3 shall be included as parts of the equipment;</p> <p>b) for components in series with the mains input to the equipment such as the supply cord, appliance coupler, r.f.i. filter and switch, short-circuit and earth fault protection may be provided by protective devices in the building installation;</p> <p>c) it is permitted for PLUGGABLE EQUIPMENT TYPE B or PERMANENTLY CONNECTED EQUIPMENT, to rely on dedicated overcurrent and short-circuit protection in the building installation, provided that the means of protection, e.g. fuses or circuit breakers, is fully specified in the installation instructions.</p> <p>If reliance is placed on protection in the building installation, the installation instructions shall so state, except that for PLUGGABLE EQUIPMENT TYPE A the building installation shall be regarded as providing protection in accordance with the rating of the wall socket outlet.</p>		N						
2.7.2	This subclause has been declared 'void'.		N						
3.2.3	Delete the NOTE in Table 3A, and delete also in this table the conduit sizes in parentheses.		N						
3.2.5.1	<p>Replace "60245 IEC 53" by "H05 RR-F"; "60227 IEC 52" by "H03 VV-F or H03 VVH2-F"; "60227 IEC 53" by "H05 VV-F or H05 VVH2-F2".</p> <p>In Table 3B, replace the first four lines by the following:</p> <table><tr><td> Up to and including 6 </td><td>0,75 ^{a)} </td></tr><tr><td> Over 6 up to and including 10 </td><td>(0,75) ^{b)} 1,0 </td></tr><tr><td> Over 10 up to and including 16 </td><td>(1,0) ^{c)} 1,5 </td></tr></table> <p>In the conditions applicable to Table 3B delete the words "in some countries" in condition ^{a)}.</p> <p>In NOTE 1, applicable to Table 3B, delete the second sentence.</p>	Up to and including 6	0,75 ^{a)}	Over 6 up to and including 10	(0,75) ^{b)} 1,0	Over 10 up to and including 16	(1,0) ^{c)} 1,5		N
Up to and including 6	0,75 ^{a)}								
Over 6 up to and including 10	(0,75) ^{b)} 1,0								
Over 10 up to and including 16	(1,0) ^{c)} 1,5								
3.2.5.1 (A2:2013)	NOTE Z1 The harmonised code designations corresponding to the IEC cord types are given in Annex ZD		N						
3.3.4	<p>In Table 3D, delete the fourth line: conductor sizes for 10 to 13 A, and replace with the following:</p> <table><tr><td> Over 10 up to and including 16 </td><td>1,5 to 2,5 </td></tr><tr><td>1,5 to 4 </td><td></td></tr></table> <p>Delete the fifth line: conductor sizes for 13 to 16 A.</p>	Over 10 up to and including 16	1,5 to 2,5	1,5 to 4			N		
Over 10 up to and including 16	1,5 to 2,5								
1,5 to 4									

EN 60950-1			
Clause	Requirement + Test	Result - Remark	Verdict
4.3.13.6 (A1:2010)	Replace the existing NOTE by the following: NOTE Z1 Attention is drawn to: 1999/519/EC: Council Recommendation on the limitation of exposure of the general public to electromagnetic fields 0 Hz to 300 GHz, and 2006/25/EC: Directive on the minimum health and safety requirements regarding the exposure of workers to risks arising from physical agents (artificial optical radiation).		N
	Standards taking into account mentioned Recommendation and Directive which demonstrate compliance with the applicable EU Directive are indicated in the OJEC.		N
Annex H	Replace the last paragraph of this annex by: At any point 10 cm from the surface of the OPERATOR ACCESS AREA, the dose rate shall not exceed 1 µSv/h (0,1 mR/h) (see NOTE). Account is taken of the background level. Replace the notes as follows: NOTE These values appear in Directive 96/29/Euratom. Delete NOTE 2.		N
Bibliography	Additional EN standards.		—

ZA	NORMATIVE REFERENCES TO INTERNATIONAL PUBLICATIONS WITH THEIR CORRESPONDING EUROPEAN PUBLICATIONS	—
-----------	--	---

ZB ANNEX (normative) SPECIAL NATIONAL CONDITIONS (EN)			
1.2.4.1	In Denmark , certain types of Class I appliances (see 3.2.1.1) may be provided with a plug not establishing earthing conditions when inserted into Danish socket-outlets.		N
1.2.13.14 (A11:2009)	In Norway and Sweden , for requirements see 1.7.2.1 and 7.3 of this annex.		N
1.5.7.1 (A11:2009)	In Finland , Norway and Sweden , resistors bridging BASIC INSULATION in CLASS I PLUGGABLE EQUIPMENT TYPE A must comply with the requirements in 1.5.7.2.		N
1.5.8	In Norway , due to the IT power system used (see annex V, Figure V.7), capacitors are required to be rated for the applicable line-to-line voltage (230 V).		N
1.5.9.4	In Finland , Norway and Sweden , the third dashed sentence is applicable only to equipment as defined in 6.1.2.2 of this annex.		N

EN 60950-1			
Clause	Requirement + Test	Result - Remark	Verdict
1.7.2.1	<p>In Finland, Norway and Sweden, CLASS I PLUGGABLE EQUIPMENT TYPE A intended for connection to other equipment or a network shall, if safety relies on connection to protective earth or if surge suppressors are connected between the network terminals and accessible parts, have a marking stating that the equipment must be connected to an earthed mains socket-outlet.</p> <p>The marking text in the applicable countries shall be as follows:</p> <p>In Finland: "Laite on liitettävä suojakoskettimilla varustettuun pistorasiaan"</p> <p>In Norway: "Apparatet må tilkoples jordet stikkontakt"</p> <p>In Sweden: "Apparaten skall anslutas till jordat uttag"</p> <p>In Norway and Sweden, the screen of the cable distribution system is normally not earthed at the entrance of the building and there is normally no equipotential bonding system within the building. Therefore the protective earthing of the building installation need to be isolated from the screen of a cable distribution system.</p> <p>It is however accepted to provide the insulation external to the equipment by an adapter or an interconnection cable with galvanic isolator, which may be provided by e.g. a retailer.</p> <p>The user manual shall then have the following or similar information in Norwegian and Swedish language respectively, depending on in what country the equipment is intended to be used in:</p> <p>"Equipment connected to the protective earthing of the building installation through the mains connection or through other equipment with a connection to protective earthing – and to a cable distribution system using coaxial cable, may in some circumstances create a fire hazard. Connection to a cable distribution system has therefore to be provided through a device providing electrical isolation below a certain frequency range (galvanic isolator, see EN 60728-11)."</p> <p>NOTE In Norway, due to regulation for installations of cable distribution systems, and in Sweden, a galvanic isolator shall provide electrical insulation below 5 MHz. The insulation shall withstand a dielectric strength of 1,5 kV r.m.s., 50 Hz or 60 Hz, for 1 min. Translation to Norwegian (the Swedish text will also be accepted in Norway):</p> <p>"Utstyr som er koplet til beskyttelsesjord via nettplugg og/eller via annet jordtilkoplet"</p>		N

EN 60950-1			
Clause	Requirement + Test	Result - Remark	Verdict
	<p>utstyr – og er tilkople et kabel-TV nett, kan forårsake brannfare. For å unngå dette skal det ved tilkopling av utstyret til kabel-TV nettet installeres en galvanisk isolator mellom utstyret og kabel-TV nettet.”</p> <p>Translation to Swedish: "Utrustning som är kopplad till skyddsjord via jordat vägguttag och/eller via annan utrustning och samtidigt är kopplad till kabel-TV nät kan i vissa fall medföra risk för brand. För att undvika detta skall vid anslutning av utrustningen till kabel-TV nät galvanisk isolator finnas mellan utrustningen och kabel-TV nätet.”</p>		N
1.7.2.1 (A2:2013)	<p>In Denmark, CLASS I PLUGGABLE EQUIPMENT TYPE A intended for connection to other equipment or a network shall, if safety relies on connection to protective earth or if surge suppressors are connected between the network terminals and accessible parts, have a marking stating that the equipment must be connected to an earthed mains socket-outlet.</p> <p>The marking text in Denmark shall be as follows: In Denmark: "Apparatets stikprop skal tilsluttes en stikkontakt med jord, som giver forbindelse til stikproppens jord.”</p>		N
1.7.5 (A11:2009)	<p>In Denmark, socket-outlets for providing power to other equipment shall be in accordance with the Heavy Current Regulations, Section 107-2-D1, Standard Sheet DK 1-3a, DK 1-5a or DK 1-7a, when used on Class I equipment. For STATIONARY EQUIPMENT the socket-outlet shall be in accordance with Standard Sheet DK 1-1b or DK 1-5a.</p> <p>For CLASS II EQUIPMENT the socket outlet shall be in accordance with Standard Sheet DKA 1-4a.</p>		N
1.7.5 (A2:2013)	<p>In Denmark, socket-outlets for providing power to other equipment shall be in accordance with the DS 60884-2-D1:2011.</p> <p>For class I equipment the following Standard Sheets are applicable: DK 1-3a, DK 1-1c, DK 1-1d, DK 1-5a or DK 1-7a, with the exception for STATIONARY EQUIPMENT where the socket-outlets shall be in accordance with Standard Sheet DK 1-1b, DK 1-1c, DK 1-1d or DK 1-5a.</p> <p>Socket outlets intended for providing power to Class II apparatus with a rated current of 2,5 A shall be in accordance with DS 60884-2-D1 standard sheet DKA 1-4a. Other current rating socket outlets shall be in compliance with by DS 60884-2-D1 Standard Sheet DKA 1-3a or DKA 1-3b.</p> <p>Justification the Heavy Current Regulations, 6c</p>		N

EN 60950-1			
Clause	Requirement + Test	Result - Remark	Verdict
2.2.4	In Norway , for requirements see 1.7.2.1, 6.1.2.1 and 6.1.2.2 of this annex.		N
2.3.2	In Finland, Norway and Sweden there are additional requirements for the insulation. See 6.1.2.1 and 6.1.2.2 of this annex.		N
2.3.4	In Norway , for requirements see 1.7.2.1, 6.1.2.1 and 6.1.2.2 of this annex.		N
2.6.3.3	In the United Kingdom , the current rating of the circuit shall be taken as 13 A, not 16 A.		N
2.7.1	In the United Kingdom , to protect against excessive currents and short-circuits in the PRIMARY CIRCUIT of DIRECT PLUG-IN EQUIPMENT, tests according to 5.3 shall be conducted, using an external protective device rated 30 A or 32 A. If these tests fail, suitable protective devices shall be included as integral parts of the DIRECT PLUG-IN EQUIPMENT, so that the requirements of 5.3 are met.		N
2.10.5.13	In Finland, Norway and Sweden , there are additional requirements for the insulation, see 6.1.2.1 and 6.1.2.2 of this annex.		N
3.2.1.1	<p>In Switzerland, supply cords of equipment having a RATED CURRENT not exceeding 10 A shall be provided with a plug complying with SEV 1011 or IEC 60884-1 and one of the following dimension sheets:</p> <p>SEV 6532-2.1991 Plug Type 15 3P+N+PE 250/400 V, 10 A</p> <p>SEV 6533-2.1991 Plug Type 11 L+N 250 V, 10 A</p> <p>SEV 6534-2.1991 Plug Type 12 L+N+PE 250 V, 10 A</p> <p>In general, EN 60309 applies for plugs for currents exceeding 10 A. However, a 16 A plug and socket-outlet system is being introduced in Switzerland, the plugs of which are according to the following dimension sheets, published in February 1998:</p> <p>SEV 5932-2.1998 Plug Type 25 3L+N+PE 230/400 V, 16 A</p> <p>SEV 5933-2.1998 Plug Type 21 L+N 250 V, 16 A</p> <p>SEV 5934-2.1998 Plug Type 23 L+N+PE 250 V, 16 A</p>		N

EN 60950-1			
Clause	Requirement + Test	Result - Remark	Verdict
3.2.1.1	<p>In Denmark, supply cords of single-phase equipment having a rated current not exceeding 13 A shall be provided with a plug according to the Heavy Current Regulations, Section 107-2-D1.</p> <p>CLASS I EQUIPMENT provided with socket-outlets with earth contacts or which are intended to be used in locations where protection against indirect contact is required according to the wiring rules shall be provided with a plug in accordance with standard sheet DK 2-1a or DK 2-5a.</p> <p>If poly-phase equipment and single-phase equipment having a RATED CURRENT exceeding 13 A is provided with a supply cord with a plug, this plug shall be in accordance with the Heavy Current Regulations, Section 107-2-D1 or EN 60309-2.</p>		N
3.2.1.1 (A2:2013)	<p>In Denmark, supply cords of single-phase equipment having a rated current not exceeding 13 A shall be provided with a plug according to DS 60884-2-D1.</p> <p>CLASS I EQUIPMENT provided with socket-outlets with earth contacts or which are intended to be used in locations where protection against indirect contact is required according to the wiring rules shall be provided with a plug in accordance with standard sheet DK 2-1a or DK 2-5a.</p> <p>If a single-phase equipment having a RATED CURRENT exceeding 13 A or if a poly-phase equipment is provided with a supply cord with a plug, this plug shall be in accordance with the standard sheets DK 6-1a in DS 60884-2-D1 or EN 60309-2.</p> <p>Justification the Heavy Current Regulations, 6c</p>		N
3.2.1.1	<p>In Spain, supply cords of single-phase equipment having a rated current not exceeding 10 A shall be provided with a plug according to UNE 20315:1994.</p> <p>Supply cords of single-phase equipment having a rated current not exceeding 2,5 A shall be provided with a plug according to UNE-EN 50075:1993.</p> <p>CLASS I EQUIPMENT provided with socket-outlets with earth contacts or which are intended to be used in locations where protection against indirect contact is required according to the wiring rules, shall be provided with a plug in accordance with standard UNE 20315:1994.</p> <p>If poly-phase equipment is provided with a supply cord with a plug, this plug shall be in accordance with UNE-EN 60309-2.</p>		N

EN 60950-1			
Clause	Requirement + Test	Result - Remark	Verdict
3.2.1.1	In the United Kingdom , apparatus which is fitted with a flexible cable or cord and is designed to be connected to a mains socket conforming to BS 1363 by means of that flexible cable or cord and plug, shall be fitted with a 'standard plug' in accordance with Statutory Instrument 1768:1994 - The Plugs and Sockets etc. (Safety) Regulations 1994, unless exempted by those regulations. NOTE 'Standard plug' is defined in SI 1768:1994 and essentially means an approved plug conforming to BS 1363 or an approved conversion plug.		N
3.2.1.1	In Ireland , apparatus which is fitted with a flexible cable or cord and is designed to be connected to a mains socket conforming to I.S. 411 by means of that flexible cable or cord and plug, shall be fitted with a 13 A plug in accordance with Statutory Instrument 525:1997 - National Standards Authority of Ireland (section 28) (13 A Plugs and Conversion Adaptors for Domestic Use) Regulations 1997.		N
3.2.4	In Switzerland , for requirements see 3.2.1.1 of this annex.		N
3.2.5.1	In the United Kingdom , a power supply cord with conductor of 1,25 mm ² is allowed for equipment with a rated current over 10 A and up to and including 13 A.		N
3.3.4	In the United Kingdom , the range of conductor sizes of flexible cords to be accepted by terminals for equipment with a RATED CURRENT of over 10 A up to and including 13 A is: • 1,25 mm ² to 1,5 mm ² nominal cross-sectional area.		N
4.3.6	In the United Kingdom , the torque test is performed using a socket outlet complying with BS 1363 part 1:1995, including Amendment 1:1997 and Amendment 2:2003 and the plug part of DIRECT PLUG-IN EQUIPMENT shall be assessed to BS 1363: Part 1, 12.1, 12.2, 12.3, 12.9, 12.11, 12.12, 12.13, 12.16 and 12.17, except that the test of 12.17 is performed at not less than 125 °C. Where the metal earth pin is replaced by an Insulated Shutter Opening Device (ISOD), the requirements of clauses 22.2 and 23 also apply.		N
4.3.6	In Ireland , DIRECT PLUG-IN EQUIPMENT is known as plug similar devices. Such devices shall comply with Statutory Instrument 526:1997 - National Standards Authority of Ireland (Section 28) (Electrical plugs, plug similar devices and sockets for domestic use) Regulations, 1997.		N

EN 60950-1			
Clause	Requirement + Test	Result - Remark	Verdict
5.1.7.1	<p>In Finland, Norway and Sweden TOUCH CURRENT measurement results exceeding 3,5 mA r.m.s. are permitted only for the following equipment:</p> <ul style="list-style-type: none"> • STATIONARY PLUGGABLE EQUIPMENT TYPE A that <ul style="list-style-type: none"> ○ is intended to be used in a RESTRICTED ACCESS LOCATION where equipotential bonding has been applied, for example, in a telecommunication centre; and ○ has provision for a permanently connected PROTECTIVE EARTHING CONDUCTOR; and ○ is provided with instructions for the installation of that conductor by a SERVICE PERSON; • STATIONARY PLUGGABLE EQUIPMENT TYPE B; • STATIONARY PERMANENTLY CONNECTED EQUIPMENT. 		N


EN 60950-1			
Clause	Requirement + Test	Result - Remark	Verdict
6.1.2.1 (A1:2010)	<p>In Finland, Norway and Sweden, add the following text between the first and second paragraph of the compliance clause:</p> <p>If this insulation is solid, including insulation forming part of a component, it shall at least consist of either</p> <ul style="list-style-type: none"> - two layers of thin sheet material, each of which shall pass the electric strength test below, or - one layer having a distance through insulation of at least 0,4 mm, which shall pass the electric strength test below. <p>Alternatively for components, there is no distance through insulation requirements for the insulation consisting of an insulating compound completely filling the casing, so that CLEARANCES and CREEPAGE DISTANCES do not exist, if the component passes the electric strength test in accordance with the compliance clause below and in addition</p> <ul style="list-style-type: none"> - passes the tests and inspection criteria of 2.10.11 with an electric strength test of 1,5 kV multiplied by 1,6 (the electric strength test of 2.10.10 shall be performed using 1,5 kV), and - is subject to ROUTINE TESTING for electric strength during manufacturing, using a test voltage of 1,5 kV. <p>It is permitted to bridge this insulation with an optocoupler complying with 2.10.5.4 b).</p> <p>It is permitted to bridge this insulation with a capacitor complying with EN 60384-14:2005, subclass Y2.</p> <p>A capacitor classified Y3 according to EN 60384-14:2005, may bridge this insulation under the following conditions:</p> <ul style="list-style-type: none"> - the insulation requirements are satisfied by having a capacitor classified Y3 as defined by EN 60384-14, which in addition to the Y3 testing, is tested with an impulse test of 2,5 kV defined in EN 60950-1:2006, 6.2.2.1; - the additional testing shall be performed on all the test specimens as described in EN 60384-14; - the impulse test of 2,5 kV is to be performed before the endurance test in EN 60384-14, in the sequence of tests as described in EN 60384-14. 		N

EN 60950-1			
Clause	Requirement + Test	Result - Remark	Verdict
6.1.2.2	In Finland, Norway and Sweden , the exclusions are applicable for PERMANENTLY CONNECTED EQUIPMENT, PLUGGABLE EQUIPMENT TYPE B and equipment intended to be used in a RESTRICTED ACCESS LOCATION where equipotential bonding has been applied, e.g. in a telecommunication centre, and which has provision for a permanently connected PROTECTIVE EARTHING CONDUCTOR and is provided with instructions for the installation of that conductor by a SERVICE PERSON.		N
7.2	In Finland, Norway and Sweden , for requirements see 6.1.2.1 and 6.1.2.2 of this annex. The term TELECOMMUNICATION NETWORK in 6.1.2 being replaced by the term CABLE DISTRIBUTION SYSTEM.		N
7.3 (A11:2009)	In Norway and Sweden , for requirements see 1.2.13.14 and 1.7.2.1 of this annex.		N

Annex ZC (informative) A-deviations			
1.5.1	Switzerland (Ordinance on environmentally hazardous substances SR 814.081, Annex 1.7, Mercury - Annex 1.7 of SR 814.81 applies for mercury.) Add the following: NOTE In Switzerland, switches containing mercury such as thermostats, relays and level controllers are not allowed.		N
1.7.2.1	Germany (Gesetz über technische Arbeitsmittel und Verbraucherprodukte (Geräte- und Produktsicherheitsgesetz – GPSG) [Law on technical labour equipment and consumer products], of 6th January 2004, Section 2, Article 4, Clause (4), Item 2). If for the assurance of safety and health certain rules during use, amending or maintenance of a technical labour equipment or readymade consumer product are to be followed, a manual in German language has to be delivered when placing the product on the market. Of this requirement, rules for use even only by SERVICE PERSONS are not exempted.		N
1.7.13	Switzerland (Ordinance on chemical hazardous risk reduction SR 814.81, Annex 2.15 Batteries) Annex 2.15 of SR 814.81 applies for batteries.		N
Zx. Protection against excessive sound pressure from personal music players			

EN 60950-1			
Clause	Requirement + Test	Result - Remark	Verdict
	<p>Zx.1 General</p> <p>This sub-clause specifies requirements for protection against excessive sound pressure from personal music players that are closely coupled to the ear. It also specifies requirements for earphones and headphones intended for use with personal music players.</p> <p>A personal music player is a portable equipment for personal use, that:</p> <ul style="list-style-type: none"> – is designed to allow the user to listen to recorded or broadcast sound or video; and – primarily uses headphones or earphones that can be worn in or on or around the ears; and – allows the user to walk around while in use. <p>NOTE 1 Examples are hand-held or body-worn portable CD players, MP3 audio players, mobile phones with MP3 type features, PDA"s or similar equipment.</p> <p>A personal music player and earphones or headphones intended to be used with personal music players shall comply with the requirements of this sub-clause.</p> <p>The requirements in this sub-clause are valid for music or video mode only. The requirements do not apply:</p> <ul style="list-style-type: none"> – while the personal music player is connected to an external amplifier; or – while the headphones or earphones are not used. <p>NOTE 2 An external amplifier is an amplifier which is not part of the personal music player or the listening device, but which is intended to play the music as a standalone music player.</p> <p>The requirements do not apply to:</p> <ul style="list-style-type: none"> – hearing aid equipment and professional equipment; <p>NOTE 3 Professional equipment is equipment sold through special sales channels. All products sold through normal electronics stores are considered not to be professional equipment.</p> <ul style="list-style-type: none"> – analogue personal music players (personal music players without any kind of digital processing of the sound signal) that are brought to the market before the end of 2015. <p>NOTE 4 This exemption has been allowed because this technology is falling out of use and it is expected that within a few years it will no longer exist. This exemption will not be extended to other technologies.</p> <p>For equipment which is clearly designed or intended for use by young children, the limits of EN 71-1 apply.</p>		N

EN 60950-1			
Clause	Requirement + Test	Result - Remark	Verdict
	<p>Zx.2 Equipment requirements</p> <p>No safety provision is required for equipment that complies with the following:</p> <ul style="list-style-type: none"> – equipment provided as a package (personal music player with its listening device), where the acoustic output $L_{Aeq,T}$ is ≤ 85 dBA measured while playing the fixed “programme simulation noise” as described in EN 50332-1; and – a personal music player provided with an analogue electrical output socket for a listening device, where the electrical output is ≤ 27 mV measured as described in EN 50332-2, while playing the fixed “programme simulation noise” as described in EN 50332-1. <p>NOTE 1 Wherever the term acoustic output is used in this clause, the 30 s A-weighted equivalent sound pressure level $L_{Aeq,T}$ is meant. See also Zx.5 and Annex Zx.</p> <p>All other equipment shall:</p> <ul style="list-style-type: none"> a) protect the user from unintentional acoustic outputs exceeding those mentioned above; and b) have a standard acoustic output level not exceeding those mentioned above, and automatically return to an output level not exceeding those mentioned above when the power is switched off; and c) provide a means to actively inform the user of the increased sound pressure when the equipment is operated with an acoustic output exceeding those mentioned above. Any means used shall be acknowledged by the user before activating a mode of operation which allows for an acoustic output exceeding those mentioned above. The acknowledgement does not need to be repeated more than once every 20 h of cumulative listening time; and <p>NOTE 2 Examples of means include visual or audible signals. Action from the user is always required.</p> <p>NOTE 3 The 20 h listening time is the accumulative listening time, independent how often and how long the personal music player has been switched off.</p> <ul style="list-style-type: none"> d) have a warning as specified in Zx.3; and e) not exceed the following: <ul style="list-style-type: none"> 1) equipment provided as a package (player with its listening device), the acoustic output shall be ≤ 100 dBA measured while playing the fixed “programme simulation noise” described in EN 50332-1; and 		N

EN 60950-1			
Clause	Requirement + Test	Result - Remark	Verdict
	<p>2) a personal music player provided with an analogue electrical output socket for a listening device, the electrical output shall be ≤ 150 mV measured as described in EN 50332-2, while playing the fixed "programme simulation noise" described in EN 50332-1. For music where the average sound pressure (long term $L_{Aeq,T}$) measured over the duration of the song is lower than the average produced by the programme simulation noise, the warning does not need to be given as long as the average sound pressure of the song is below the basic limit of 85 dBA. In this case T becomes the duration of the song.</p> <p>NOTE 4 Classical music typically has an average sound pressure (long term $L_{Aeq,T}$) which is much lower than the average programme simulation noise. Therefore, if the player is capable to analyse the song and compare it with the programme simulation noise, the warning does not need to be given as long as the average sound pressure of the song is below the basic limit of 85 dBA. For example, if the player is set with the programme simulation noise to 85 dBA, but the average music level of the song is only 65 dBA, there is no need to give a warning or ask an acknowledgement as long as the average sound level of the song is not above the basic limit of 85 dBA.</p>		N
	<p>Zx.3 Warning The warning shall be placed on the equipment, or on the packaging, or in the instruction manual and shall consist of the following:</p> <ul style="list-style-type: none"> – the symbol of Figure 1 with a minimum height of 5 mm; and – the following wording, or similar: "To prevent possible hearing damage, do not listen at high volume levels for long periods."  <p>Figure 1 – Warning label (IEC 60417-6044) Alternatively, the entire warning may be given through the equipment display during use, when the user is asked to acknowledge activation of the higher level.</p>		N
	Zx.4 Requirements for listening devices (headphones and earphones)		N
	<p>Zx.4.1 Wired listening devices with analogue input With 94 dBA sound pressure output $L_{Aeq,T}$, the input voltage of the fixed "programme simulation noise" described in EN 50332-2 shall be ≥ 75 mV. This requirement is applicable in any mode where the headphones can operate (active or passive), including any available setting (for example built-in volume level control). NOTE The values of 94 dBA – 75 mV correspond with 85dBA – 27 mV and 100 dBA – 150 mV.</p>		N

EN 60950-1			
Clause	Requirement + Test	Result - Remark	Verdict
	<p>Zx.4.2 Wired listening devices with digital input With any playing device playing the fixed “programme simulation noise” described in EN 50332-1 (and respecting the digital interface standards, where a digital interface standard exists that specifies the equivalent acoustic level), the acoustic output $L_{Aeq,T}$ of the listening device shall be ≤ 100 dBA.</p> <p>This requirement is applicable in any mode where the headphones can operate, including any available setting (for example built-in volume level control, additional sound feature like equalization, etc.).</p> <p>NOTE An example of a wired listening device with digital input is a USB headphone.</p>		N
	<p>Zx.4.3 Wireless listening devices In wireless mode:</p> <ul style="list-style-type: none"> – with any playing and transmitting device playing the fixed programme simulation noise described in EN 50332-1; and – respecting the wireless transmission standards, where an air interface standard exists that specifies the equivalent acoustic level; and – with volume and sound settings in the listening device (for example built-in volume level control, additional sound feature like equalization, etc.) set to the combination of positions that maximize the measured acoustic output for the abovementioned programme simulation noise, the acoustic output $L_{Aeq,T}$ of the listening device shall be ≤ 100 dBA. <p>NOTE An example of a wireless listening device is a Bluetooth headphone.</p>		N
	<p>Zx.5 Measurement methods Measurements shall be made in accordance with EN 50332-1 or EN 50332-2 as applicable. Unless stated otherwise, the time interval T shall be 30 s.</p> <p>NOTE Test method for wireless equipment provided without listening device should be defined.</p>		N

EN 60950-1			
Clause	Requirement + Test	Result - Remark	Verdict

**Annex ZD
(informative)**

IEC and CENELEC code designations for flexible cords

Type of flexible cord	Code designations	
	IEC	CENELEC
PVC insulated cords		
Flat twin tinsel cord	60227 IEC 41	H03VH-Y
Light polyvinyl chloride sheathed flexible cord	60227 IEC 52	H03VV-F H03VVH2-F
Ordinary polyvinyl chloride sheathed flexible cord	60277 IEC 53	H05VV-F H05VVH2-F
Rubber insulated cords		
Braided cord	60245 IEC 51	H03RT-F
Ordinary tough rubber sheathed flexible cord	60245 IEC 53	H05RR-F
Ordinary polychloroprene sheathed flexible cord	60245 IEC 57	H05RN-F
Heavy polychloroprene sheathed flexible cord	60245 IEC 66	H07RN-F
Cords having high flexibility		
Rubber insulated and sheathed cord	60245 IEC 86	H03RR-H
Rubber insulated, crosslinked PVC sheathed cord	60245 IEC 87	H03RV4-H
Crosslinked PVC insulated and sheathed cord	60245 IEC 88	H03V4V4-H

EN 60950-1			
Clause	Requirement + Test	Result - Remark	Verdict

1.5.1	TABLE: List of critical components					P
Object/part No.	Manufacturer/ trademark	Type/model	Technical data	Standard (Edition / year)	Mark(s) of conformity ¹⁾	
Internal Wiring	Various	Various	Min. VW-1,80°C	---	UL	
Adapter	Dongguan Oriental Hero Electrical Factory	OH- 1006B05006 00U-VDE	rated Input: 100~240V~ 50/60Hz 0.25A, Output: 5Vdc, 600mA(LPS)	IEC 60950- 1:2005+ A1:2009 & EN 60950-1: 2006 + A11: 2009 + A1: 2010+A12:2011	CB by TUV Rheinland (Guangdong) Ltd report No.: 16055173 001	
-alternative	Shenzhen JingQuanHua Electronics Co. Ltd.	NSA6EE- 050060	rated Input: 100~240V~ 50/60Hz 0.2A, Output: 5Vdc, 600mA(LPS)	IEC 60950- 1:2005+ A1:2009 & EN 60950-1: 2006 + A11: 2009 + A1: 2010+A12:2011	CB by ATT Product Service Co., Ltd. report No.: 13BAS01042 11	
PCB	Various	Various	Min. V-1,105°C	UL94 UL 796	UL	
Enclosure material	Various	Various	Min. HB, 60°C	EN60950- 1:2006+A11:20 09+A1:2010+A1 2:2011	Test with equipment	
Speaker	Xiamen jia xin south lake technology co., LTD	YL5013	6 Ω ±15%	EN60950- 1:2006+A11:20 09+A1:2010+A1 2:2011	Test with equipment	
1) An asterisk indicates a mark which assures the agreed level of surveillance						
Supplementary information:						

1.5.1	TABLE: Opto Electronic Devices	N
Manufacturer.....:		
Type.....:		
Separately tested.....:		
Bridging insulation.....:		
External creepage distance.....:		
Internal creepage distance.....:		
Distance through insulation.....:		
Tested under the following conditions.....:		
Input.....:		
Output.....:		
Supplementary information:		

EN 60950-1			
Clause	Requirement + Test	Result - Remark	Verdict

1.6.2	TABLE: Electrical data (in normal conditions)						P
U (V)	I (A)	I _{rated} (A)	P (W)	Fuse #	I _{fuse} (A)	Condition/status	
Normal condition 1: Supplied by adapter and working at max. working condition.							
DC5V	0.021	0.6	0.105	---	---	Max. normal operation condition. Adapter model number: OH-1006B0500600U-VDE	
DC5V	0.017	0.6	0.085	---	---	Max. normal operation condition. Adapter model number: NSA6EE-050060	
Normal condition 2: Supplied by POE and working at max. working condition.							
POE (DC48V)	0.033	---	1.584	---	---	Max. normal operation condition	
Supplementary information:							

2.1.1.5 c)1)	TABLE: max. V, A, VA test				N
Voltage (rated) (V)	Current (rated) (A)	Voltage (max.) (V)	Current (max.) (A)	VA (max.) (VA)	
Supplementary information:					

2.1.1.5 c)2)	TABLE: stored energy		N
Capacitance C (μF)	Voltage U (V)	Energy E (J)	
Supplementary information:			

2.2	TABLE: evaluation of voltage limiting components in SELV circuits			N
Component (measured between)		max. voltage (V) (normal operation)		Voltage Limiting Components
		V peak	V d.c.	
Fault test performed on voltage limiting components		Voltage measured (V) in SELV circuits (V peak or V d.c.)		
Supplementary information:				

EN 60950-1			
Clause	Requirement + Test	Result - Remark	Verdict

2.4.2	TABLE: limited current circuit measurement				N
Location	Voltage (V)	Current (mA)	Freq. (KHz)	Limit (mA)	
Supplementary information:					

2.5	TABLE: limited power sources				N
Circuit output tested:					
Measured Uoc (V) with all load circuits disconnected :					
	Isc (A)		VA		
	Meas.	Limit	Meas.	Limit	
Supplementary information:					

2.10.2	Table: working voltage measurement			N
Location		Peak voltage (V)	RMS voltage (V)	Comments
Supplementary information:				

2.10.3 and 2.10.4	TABLE: Clearance and creepage distance measurements						N
Clearance (cl) and creepage distance (cr) at/of/between:	U peak (V)	U r.m.s. (V)	Required cl (mm)	cl (mm)	Required cr (mm)	cr (mm)	
Supplementary information:							

2.10.5	TABLE: Distance through insulation measurements					N
Distance through insulation (DTI) at/of:		U peak (V)	U rms (V)	Test voltage (V)	Required DTI (mm)	DTI (mm)
Supplementary information:						

EN 60950-1			
Clause	Requirement + Test	Result - Remark	Verdict

4.3.8	TABLE: Batteries								N
The tests of 4.3.8 are applicable only when appropriate battery data is not available									N
Is it possible to install the battery in a reverse polarity position?									N
	Non-rechargeable batteries			Rechargeable batteries					
	Discharging		Un-intentional charging	Charging		Discharging		Reversed charging	
	Meas. current	Manuf. Specs.		Meas. current	Manuf. Specs.	Meas. current	Manuf. Specs.	Meas. current	Manuf. Specs.
Max. current during normal condition									
Max. current during fault condition									
Test results:									Verdict
- Chemical leaks									N
- Explosion of the battery									N
- Emission of flame or expulsion of molten metal									N
- Electric strength tests of equipment after completion of tests									N
Supplementary information:									

4.3.8	TABLE: Batteries	N
Battery category: (Lithium, NiMh, NiCad, Lithium Ion ...)		
Manufacturer.....:		
Type / model.....:		
Voltage.....:		
Capacity.....: mAh		
Tested and Certified by (incl. Ref. No.):		
Circuit protection diagram:		

EN 60950-1			
Clause	Requirement + Test	Result - Remark	Verdict

MARKINGS AND INSTRUCTIONS (1.7.13)

Location of replaceable battery	
Language(s).....:	
Close to the battery.....:	
In the servicing instructions	
In the operating instructions.....:	

4.5	TABLE: Thermal requirements					P		
	Supply voltage (V)	A		B		—		
	Ambient Tmin (°C)	25.5	---	25.8	---	—		
	Ambient Tmax (°C)	26.1	Shift to Tma	26.4	Shift to Tma	—		
Maximum measured temperature T of part/at:		T (°C)				Allowed T _{max} (°C)		
Ambient		26.1	40.0	26.4	40.0	---		
PCB near U7		37.1	51.0	----	----	105		
PCB near U2		29.8	43.7	43.7	57.3	105		
PCB of key board		29.3	43.2	29.4	43	105		
Connetor/J1		----	----	31.8	45.4	90		
PCB near U8		----	----	37.4	51.0	105		
DC jack/J3 surface		30.4	44.3	----	----	80		
Inner wire		32.1	46.0	33.2	46.8	95		
Enclosure of base		28.7	42.6	26.6	40.2	60		
Enclosure of handset		27.9	41.8	30.4	44.0	60		
LCD		28.5	42.4	31.3	44.9	70		
Key		28.1	42.0	28.1	41.7	60		
Supplementary information:								
1. Tma is 40°C								
2."A"-see appended table 1.6.2 normal operation 1;								
3."B"-see appended table 1.6.2 normal operation 2.								
Note: the adapter model used for test is OH-1006B0500600U-VDE which get the higher input power.								
Temperature T of winding:		t ₁ (°C)	R ₁ (Ω)	t ₂ (°C)	R ₂ (Ω)	T (°C)	Allowed T _{max} (°C)	Insulation class
Supplementary information:								

EN 60950-1			
Clause	Requirement + Test	Result - Remark	Verdict

4.5.5	TABLE: Ball pressure test of thermoplastic parts			N
	Allowed impression diameter (mm)	≤ 2 mm		—
Part		Test temperature (°C)	Impression diameter (mm)	
Supplementary information:				

4.7	TABLE: Resistance to fire					N
Part	Manufacturer of material	Type of material	Thickness (mm)	Flammability class	Evidence	
Supplementary information:						

5.1	TABLE: touch current measurement			N
Measured between:		Measured (mA)	Limit (mA)	Comments/conditions
Supplementary information:				

5.2	TABLE: Electric strength tests, impulse tests and voltage surge tests			N
Test voltage applied between:		Voltage shape (AC, DC, impulse, surge)	Test voltage (V)	Breakdown Yes / No
Supplementary information:				

EN 60950-1			
Clause	Requirement + Test	Result - Remark	Verdict

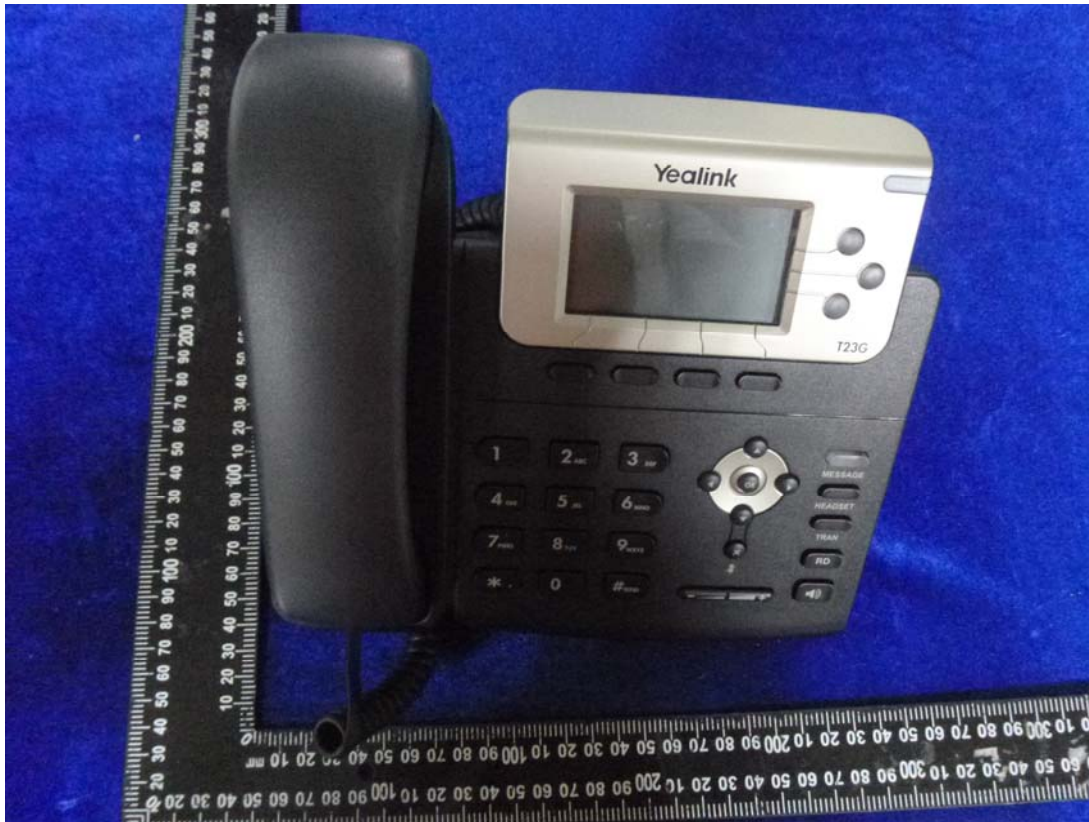
5.3	TABLE: Fault condition tests					P
	Ambient temperature (°C): 26.7					—
	Power source for EUT: Manufacturer, model/type, output rating : See appended table 1.5.1					—
Component No.	Fault	Supply voltage (V)	Test time	Fuse #	Fuse current (A)	Observation
Z3(pin1-2)	S-C	48VDC	1 hour	---	---	NCD, NFG,NHT, No hazardous voltage and energy
Q11(pinS-D)	S-C	48VDC	10mins	---	---	Unit shut down immediately, recoverable,NCD, NFG,NHT
C126	S-C	48VDC	10mins	---	---	NCD, NFG,NHT, No hazardous voltage and energy
Q1pin(c, e)	S-C	48VDC	10mins	---	---	Unit shut down immediately, recoverable,NCD, NFG,NHT
Speaker	S-C	48VDC	1h	---	---	Unit shut down immediately, recoverable,NCD, NFG,NHT
microphone	S-C	48VDC	1h	---	---	Unit shut down immediately, recoverable,NCD, NFG,NHT
Supplementary information:						
NHT: No High Temperature; NCD: No Component Damage; NFG no flammability gas.						

C.2	TABLE: transformers							N
Loc.	Tested insulation	Working voltage peak / V (2.10.2)	Working voltage rms / V (2.10.2)	Required electric strength (5.2)	Required clearance / mm (2.10.3)	Required creepage distance / mm(2.10.4)	Required distance thr. insul. (2.10.5)	
Loc.	Tested insulation			Test voltage/ V	Measured clearance / mm	Measured creepage dist./ mm	Measured distance thr. insul. / mm; number of layers	
Supplementary information:								

C.2	TABLE: transformers	N

Appendix A EUT PHOTOS

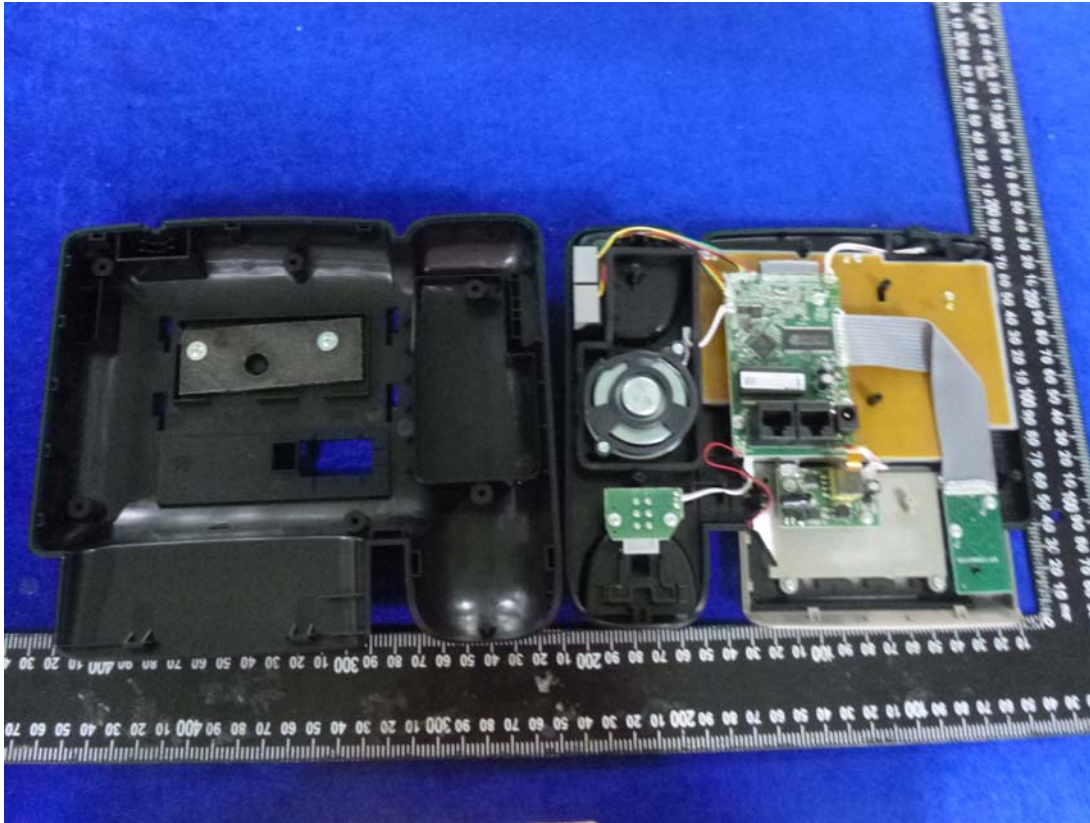
A.1 EUT- Whole view of unit



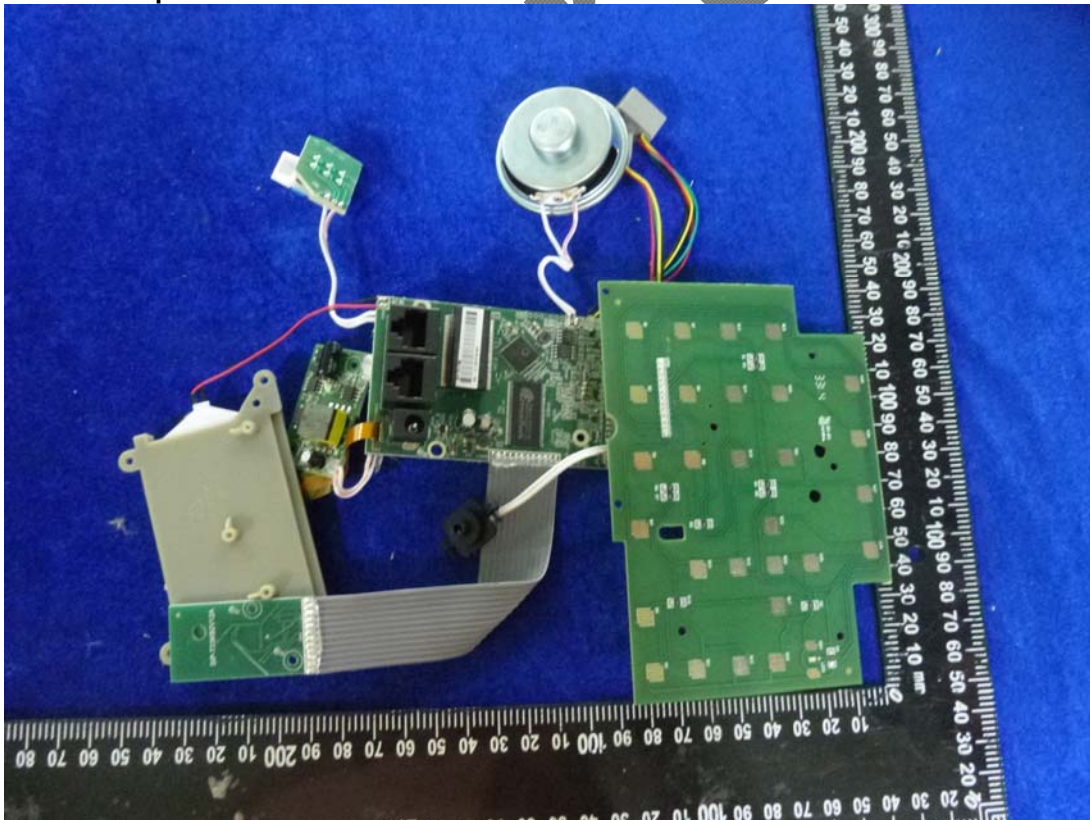
A.2 EUT- Bottom view of unit



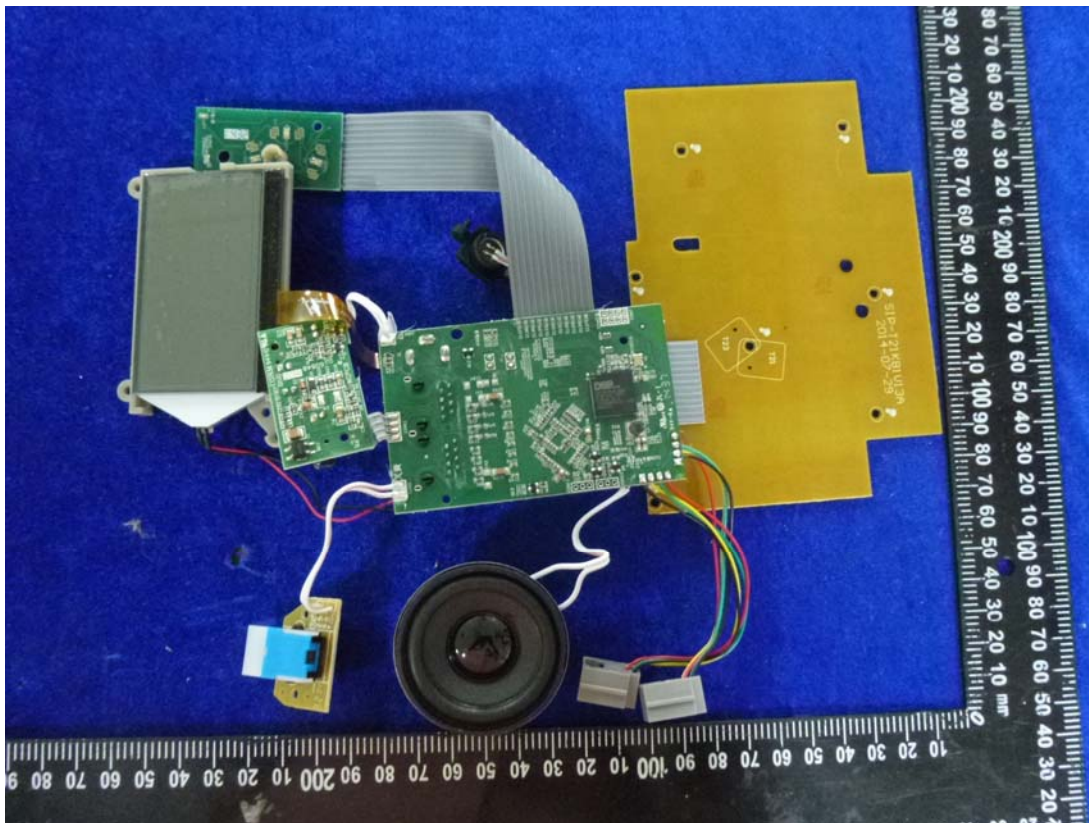
A.3 EUT- Open view of unit



A.4 EUT- Top view of PCB



A.5 EUT- Rear view of PCB



A.6 EUT-Adapter view(Model number: OH-1006B0500600U-VDE)



A.7 EUT-Adapter view(Model number: NSA6EE-050060)



Draw

APPENDIX B – USER’S MANUAL

Important Safety Instructions

PROTECTION OF THE ENVIRONMENT / DISPOSAL OF THE EQUIPMENT



Do not on any account put your old equipment out with the domestic refuse.

For the sake of the environment, please use your local authority's collection point set to return and recycle old electric and electronic equipment.



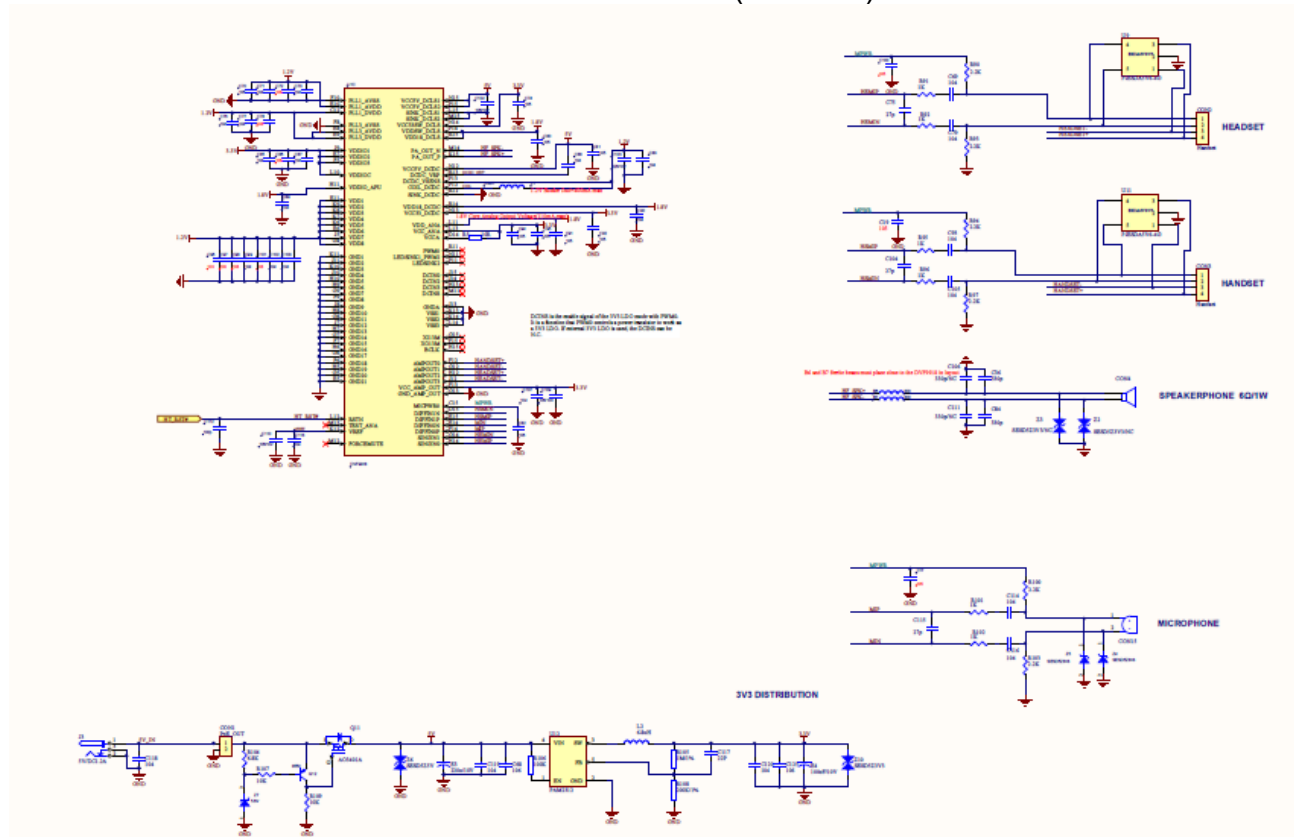
Only used the power supply listed in user manual as follow:

Manufacturer: Dongguan Oriental Hero Electrical Factory
Model number: NSA6EE-050060
Input: 100-240V~ 50/60Hz, 0.2A
Output: 5V---0.6A

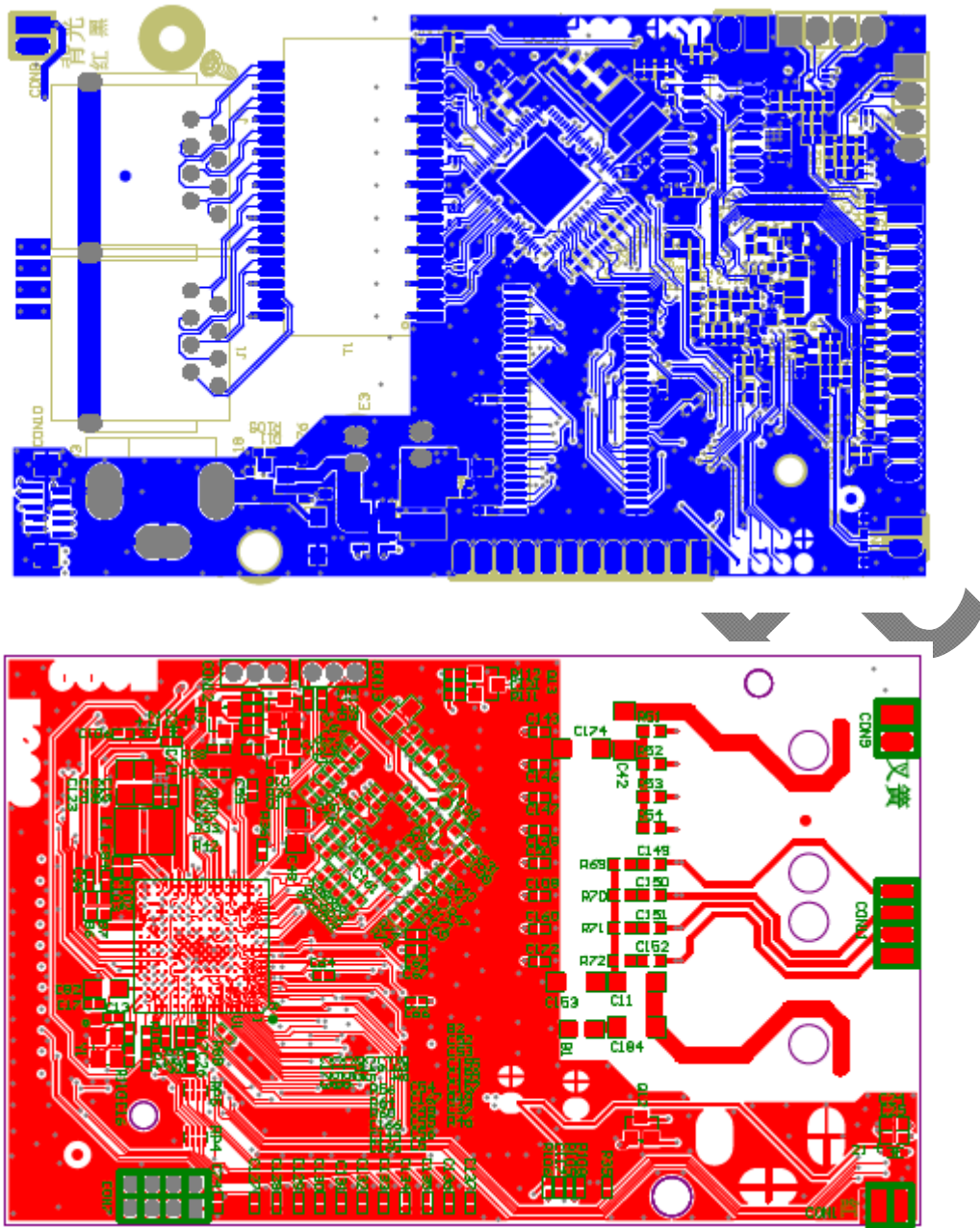
Manufacturer: Shenzhen JingQuanHua Electronics Co. Ltd.
Model number: OH-1006B0500600U-SAA
Input: 100-240V~ 50/60Hz, 0.25A
Output: 5V---0.6A

SAVE THESE INSTRUCTIONS

APPENDIX C- CIRCUIR SCHEMATICS DIAGRAM(POWER)



APPENDIX D- PCB LAYOUT DIAGRAM



APPENDIX E- THE PART OF ADAPTER REPORT

Model number: OH-1006B0500600U-VDE



Test Report issued under the responsibility of:



TEST REPORT IEC 60950-1 Information technology equipment – Safety – Part 1: General requirements	
Report Number	16055173 001
Date of issue	Jun. 19, 2013
Total number of pages	Total 61 pages
CB Testing Laboratory	TÜV Rheinland (Guangdong) Ltd.
Address	No.199 Kazhu Road, Guangzhou Science City 510663 Guangzhou China
Applicant's name	Dongguan Oriental Hero Electrical Factory
Address	Zhaiwu Industrial Zone, Liuwu, Shijie, Dongguan, Guangdong 523303, P.R. China
Manufacturer's name	Same as applicant
Address	Same as applicant
Test specification:	
Standard	IEC 60950-1:2005 (Second Edition) + Am 1:2009
Test procedure	CB Scheme
Non-standard test method	N/A
Test Report Form No	IEC60950_1C
Test Report Form(s) Originator	SGS Fimko Ltd
Master TRF	Dated 2012-08
Copyright © 2012 Worldwide System for Conformity Testing and Certification of Electrotechnical Equipment and Components (IECEE), Geneva, Switzerland. All rights reserved. This publication may be reproduced in whole or in part for non-commercial purposes as long as the IECEE is acknowledged as copyright owner and source of the material. IECEE takes no responsibility for and will not assume liability for damages resulting from the reader's interpretation of the reproduced material due to its placement and context. If this Test Report Form is used by non-IECEE members, the IECEE/IEC logo and the reference to the CB Scheme procedure shall be removed. This report is not valid as a CB Test Report unless signed by an approved CB Testing Laboratory and appended to a CB Test Certificate issued by an NCB in accordance with IECEE 02.	
Test item description	AC/DC Switching Adapter
Trade Mark	
Manufacturer	Same as applicant
Model/Type reference	OH-1048AxyU3w-z, OH-1006BxyUw-z, OH-1048ExyU3w (x, y, w are variables, details see model list on pages 9-10)
Ratings	Input: 100-240VAC, 50/60Hz, 250mA Output: see model list on pages 9-10.

List of Attachments (including a total number of pages in each attachment):

- Attachment 1: National differences (60 pages)
- Attachment 2: EU plug, AU plug, UK plug test report (41 pages)
- Attachment 3: Photo documentation (32 pages)

Summary of testing:

Tests performed (name of test and test clause):

- 1.6.2 Input current test
- 1.7.11 Durability of Marking Test
- 2.1.1.5 Energy Hazard in Operator Access Area
- 2.2.2 SELV limits for Normal Conditions
- 2.2.3 SELV limits for Fault Conditions
- 2.4 Limited current circuit
- 2.5 Limited Power Sources
- 2.9.2 Humidity Conditioning
- 2.10.2 Working Voltage over Insulation
- 2.10.3 Clearances measurement
- 2.10.4 Creepage distances measurement
- 4.2.2 Steady Force Test, 10N
- 4.2.4 Steady Force Test, 250N
- 4.2.6 Drop Test
- 4.2.7 Stress Relief Test
- 4.3.6 Torque Test
- 4.5.2 Maximum Temperature Test
- 4.5.5 Ball Pressure Test
- 5.1.6 Touch Current Test
- 5.2 Electric Strength Test
- 5.3 Fault Condition Test

Remark:

1. The models OH-1006B0800750U-VDE, OH-1006B0501200U-VDE, OH-1006B1500400U-VDE, OH-1048A0800750U3-VDE, OH-1048A0501200U3-VDE, OH-1048A1500400U3-VDE were selected for multiple testing, if no specified, model OH-1006B1500400U-VDE and OH-1048A1500400U3-VDE were the selected model for the tests.
2. The 6000 strokes test for replaceable plug was performed with appliance according to IEC 60320-1 on model OH-1048E1500400U3.

Testing location:

TÜV Rheinland (Guangdong) Ltd.
No.199 Kezhu Road, Guangzhou Science City
510663 Guangzhou China

TRF No. IEC60950_1C

Summary of compliance with National Differences

List of countries addressed: (According to IEC 60950-1:2005 (2nd Edition); Am 1:2009)

AU, AR, BR, CA, CN, CH, DE, DK, FI, GB, IL, JP, KR, NO, SI, SE, US.

Explanation of used codes: AU=Australia, AR=Argentina, BR=Brazil, CA=Canada, CN=China, CH=Switzerland, DE=Germany, DK=Denmark, FI=Finland, GB=United Kingdom, IL=Israel, JP=Japan, KR=Republic of Korea, NO=Norway, SI=Slovenia, SE=Sweden, US=United States of America.

☒ The product fulfils the requirements of IEC 60950-1:2005+A1 and/or EN 60950-1:2006 + A11: 2009 + A1:2010 + A12:2011.

All national differences see corresponding pages.

The European plug dimension was evaluated according to EN 50075, the UK plug was evaluated according to BS 1363-1+A1+A2+A3+A4, the Australian plug was evaluated according to AS/NZS 3112+A1, all the other plugs should be evaluated during national approval.

Draft

Manufacturer's Declaration per sub-clause 6.2.5 of IEC 60950-1:

The application for obtaining a CB Test Certificate includes more than one factory location and a declaration from the Manufacturer stating that the sample(s) submitted for evaluation is (are) representative of the products from each factory has been provided ☐ Yes ☒ Not applicable

When differences exist; they shall be identified in the General product information section.

Name and address of factory (ies)..... Dongguan Oriental Hero Electrical Factory
Zhaiwu Industrial Zone, Liuwu, Shijie, Dongguan, Guangdong 523303, P.R. China.

General product information:

- The equipment models OH-1048AxyU3w-z, OH-1006BxyUw-z, OH-1048ExyU3w are switching mode power supply (direct plug-in type) used for DC supply of information technology equipment.
- The AC/DC switching adapter's top enclosure is secured to bottom enclosure by snap-in and screw for models OH-1048AxyU3w-z. For European plug, Korean plug, Brazilian plug, Japanese plug, Chinese plug and American plug type, used one screw; for Australian plug, British plug, Argentina plug and Indian plug, used two screws. The power adapter's top enclosure is secured to bottom enclosure by ultrasonic welding for models for OH-1006BxyUw-z, OH-1048ExyU3w.
- Specified maximum ambient temperature is 45 °C.
- The models are in compliance with the requirements of sub-clause 2.5 (limited power source).
- Pre-production samples without serial numbers.
- The plug portion pins of European plug, Australian plug, British plug, Korean plug, Brazilian plug, Japanese plug, Chinese plug, Indian plug, Argentina plug and United states of American plug are molded into enclosure directly. It is impossible to be remained in the socket outlet after remove the adaptor.
- 5000m altitude only applied for models OH-1048AxyU3w-CCC, OH-1006BxyUw-CCC, OH-1048ExyU3w (only for chinese models).

Model difference:

- Q1, EC1, EC2, EC4, EC5, EC3, D3, R14, R15, R10, R11, R22, R19, R13, R55, C3, R17, R18, R8, R9, R12: The parameter of these components depends on output voltage and output current;
- Transformer TF1: the adapters with different output voltage have different secondary winding of transformer, details see model list.
- For all the models with output voltage 5V, there are two types of output connection, one is non-detachable output cord with circle terminal and another is USB terminal.
- There are two alternative kinds of protective device, current fuse and fusible resistor.
- Secondary LED is optional for all models.
- Magnetic core of output cord is optional for all models.
-

Model no.	Enclosure type	Fixed method of plug
OH-1048AxyU3w-z	Vertical type A	Direct plug-in with fixed plug
OH-1006BxyUw-z	Horizontal type B	Direct plug-in with fixed plug
OH-1048ExyU3w	Horizontal type C	Direct plug-in with replaceable plug

Model list:

TRF No. IEC60950_1C

OH-1048AxyU3w-z, OH-1006BxyUw-z, OH-1048ExyU3w:					
MODEL	INPUT	OUTPUT			TF1 sec. winding (ØxPxTs)
	V, A	U (V DC)	I (A)	Max. P(W)	
OH-1048AxyU3w-z OH-1006BxyUw-z, OH-1048ExyU3w	100- 240VAC, 50/60Hz, 250mA	3.0-7.5	0.10-1.2	6.0	N5(Pin 6-7): 0.45mmx1px10Ts
		7.6-11.0	0.10-0.75	6.0	N3(Pin 6-7): 0.20mmx2px18Ts
		11.1-15.0	0.10-0.55	6.0	N3(Pin 6-7): 0.40mmx1px22Ts

Note:

'x' is 3 digit number from 030 to 150 which represents the output voltage in volt dividing by 10 in step of 0.1V, for example, 030 represents the output voltage is 3.0V, 150 represents the output voltage is 15.0V.

'y' is 4 digit number from 0100 to 1200 which represents the output current in milliampere in step of 1mA, for example, 0100 represents the output current is 100mA, 1200 represents the output current is 1200mA.

'z' can be 'VDE', 'UK', 'UK1', 'SAA', 'KE', 'PSE', 'IR', 'BZ', 'UL' and 'CCC'. 'VDE' means European plug used, 'UK' means British plug used, 'SAA' means Australian plug used, 'KE' means Korean plug used, 'PSE' means Japanese plug used, 'IR' means Argentinean plug used, 'BZ' means Brazilian plug used, 'UL' means United States of American plug used, 'CCC' means Chinese plug used, 'UK1' means Indian plug used.

'w' can be U or blank, U means USB output terminal used, blank means DC cord used.

Abbreviations used in the report:

- normal conditions	N.C.	- single fault conditions	S.F.C
- functional insulation	OP	- basic insulation	BI
- double insulation	DI	- supplementary insulation	SI
- between parts of opposite polarity	BOP	- reinforced insulation	RI
- shorted-circuit	S-C	- opened-circuit	O-C
- over-load	O-L		

Indicate used abbreviations (if any).....



Model number: NSA6EE-050060

Issue Date: 2013-05-08


Page 1 of 53

Report Reference #

13BAS01042 11

	<p>Test Report issued under the responsibility of:</p>	
---	---	---

TEST REPORT IEC 60950-1 Information technology equipment - Safety - Part 1: General requirements	
Report Reference No	13BAS01042 11
Date of issue	May 8, 2013
Total number of pages	53
CB Testing Laboratory	ATT Product Service Co., Ltd.
Address	No. 3 ChangLianShan Industrial Park, ChangAn Town, DongGuan City, GuangDong, China
Applicant's name	Shenzhen JingQuanHua Electronics Co. Ltd.
Address	JINGQUANHUA INDUSTRIAL AREA, No. 1, XINXULONG, POTOUXIA COMMUNITY, GUANLAN STREET, BAOAN DISTRICT, SHENZHEN, GUANGDONG, 518110 CHINA
Test specification:	
Standard	IEC 60950-1:2005 (Second Edition) + Am 1:2009
Test procedure	CB Scheme
Non-standard test method	N/A
Test Report Form No.	IEC60950_1C
Test Report Form originator	SGS Fimko Ltd
Master TRF	Dated 2012-08
<p>Copyright © 2012 Worldwide System for Conformity Testing and Certification of Electrotechnical Equipment and Components (IECEE), Geneva, Switzerland. All rights reserved.</p> <p>This publication may be reproduced in whole or in part for non-commercial purposes as long as the IECEE is acknowledged as copyright owner and source of the material. IECEE takes no responsibility for and will not assume liability for damages resulting from the reader's interpretation of the reproduced material due to its placement and context.</p> <p>If this test Report is used by non-IECEE members, the IECEE/IEC logo and the reference to the CB Scheme procedure shall be removed.</p> <p>This report is not valid as a CB Test Report unless signed by an approved CB Testing Laboratory and appended to a CB Test Certificate issued by an NCB in accordance with IECEE 02.</p>	

Test item description	AC Adaptor
Trade Mark	
Manufacturer	Same as applicant
Model/Type reference	NSA8Ey-050XXX, (XXX=001-120, indicate output current: 0.01A-1.2A; y=U denotes American plug; y=E denotes European plug; y=B denotes Britain plug, y=S denotes Australia plug)
Rating	Input : 100-240Vac, 50/60Hz, 0.2A Output: 5.0Vdc, 1.2A Max.

Draft

APPENDIX F- TEST EQUIPMENT LIST

The record for testing equipment

Project No. RSZ141008002-03

Testing location: ☒ BACL SZ ☐ Other _____

Equipment No.	The Name of Equipment	Model	S/N	Calibration Date	Due Date	Capability Range	Manu- facturer	Testing Item	Date	Testing person	Accredited	Ref.
T-03-SF145	AC Power Meter	GPM-8212	CH150074	2014-4-10	2015-4-10	AC: 0-600V 0-20A 0-5KW	GW Instek	input test	2014/10/24	Hellen	<input checked="" type="checkbox"/> Yes <input type="checkbox"/> NO	
T-03-SF133	Electronic Load	3711A	A06BG03033	2013-11-1	2014-11-1	0-360V, 0-30A, 0-300W	Array Electronic	Abnormal operation test			<input checked="" type="checkbox"/> Yes <input type="checkbox"/> NO	
T-03-SF153	test finger	N/A	N/A	2014-4-15	2015-4-15	12.7mm	N/A	Accessed or energized parts			<input checked="" type="checkbox"/> Yes <input type="checkbox"/> NO	
T-03-SF221	OVEN	DP1000	201105083-2	2014-4-10	2015-4-10	50-200℃	Guangdong Dong Zhi Xu	stress relief test			<input checked="" type="checkbox"/> Yes <input type="checkbox"/> NO	
T-03-SF208	Data Acquisition/Switch unit	34970A	N/A	2014-4-10	2015-4-10	0-200℃	Agilent	temperature test			<input checked="" type="checkbox"/> Yes <input type="checkbox"/> NO	
T-03-SF021	Push & Pull Tester	SN-500	2601050032	2014-4-10	2015-4-10	0-50kg	SUNDOO	steady force test			<input checked="" type="checkbox"/> Yes <input type="checkbox"/> NO	
T-03-SF251	Temperature & Humidity Meter	T218	E0942	2013-1-14	2016-1-14	15-30℃, 30-90%RH	N/A	RH test			<input checked="" type="checkbox"/> Yes <input type="checkbox"/> NO	
T-03-SF210	Digital multimeter	17B	16284529	2014-5-21	2015-5-21	0-1000VAC/ DC, 0-10A AC/DC, 0-40Mohm	Fluke	input test and simulation fault test			<input checked="" type="checkbox"/> Yes <input type="checkbox"/> NO	
T-03-SF183	Stopwatch	PC396	N/A	2014-4-11	2015-4-11	0-3600s/ 3.0s/d	Tianfu	durability test			<input checked="" type="checkbox"/> Yes <input type="checkbox"/> NO	
T-03-SF027	Electron Balance	ACS-30	40136285	2013-11-1	2014-11-1	0~30kg	Huade	step test			<input checked="" type="checkbox"/> Yes <input type="checkbox"/> NO	
T-03-EE198	Digital Power Meter	WY305	806002	2013-11-12	2014-11-12	0.03级	EVERFINE	simulation fault test			<input checked="" type="checkbox"/> Yes <input type="checkbox"/> NO	

Approved by: Joshy Li Date: 2014.10.31

