



Yealink VC Deployment and User Manual for AMX Control Systems

**Version 21.10
Jul 2016**

Copyright

Copyright © 2016 YEALINK(XIAMEN) NETWORK TECHNOLOGY CO., LTD.

Copyright © 2016 Yealink(Xiamen) Network Technology CO., LTD. All rights reserved. No parts of this publication may be reproduced or transmitted in any form or by any means, electronic or mechanical, photocopying, recording, or otherwise, for any purpose, without the express written permission of Yealink(Xiamen) Network Technology CO., LTD. Under the law, reproducing includes translating into another language or format.

When this publication is made available on media, Yealink(Xiamen) Network Technology CO., LTD. gives its consent to downloading and printing copies of the content provided in this file only for private use but not for redistribution. No parts of this publication may be subject to alteration, modification or commercial use. Yealink(Xiamen) Network Technology CO., LTD. will not be liable for any damages arising from use of an illegally modified or altered publication.

Warranty

THE SPECIFICATIONS AND INFORMATION REGARDING THE PRODUCTS IN THIS GUIDE ARE SUBJECT TO CHANGE WITHOUT NOTICE. ALL STATEMENTS, INFORMATION, AND RECOMMENDATIONS IN THIS GUIDE ARE BELIEVED TO BE ACCURATE AND PRESENTED WITHOUT WARRANTY OF ANY KIND, EXPRESS OR IMPLIED. USERS MUST TAKE FULL RESPONSIBILITY FOR THEIR APPLICATION OF PRODUCTS.

YEALINK(XIAMEN) NETWORK TECHNOLOGY CO., LTD. MAKES NO WARRANTY OF ANY KIND WITH REGARD TO THIS GUIDE, INCLUDING, BUT NOT LIMITED TO, THE IMPLIED WARRANTIES OF MERCHANTABILITY AND FITNESS FOR A PARTICULAR PURPOSE. Yealink(Xiamen) Network Technology CO., LTD. shall not be liable for errors contained herein nor for incidental or consequential damages in connection with the furnishing, performance, or use of this guide.

Customer Feedback

We are striving to improve our documentation quality and we appreciate your feedback. Email your opinions and comments to DocsFeedback@yealink.com.

About This Guide

The Yealink video conferencing systems provide an API interface for the AMX NetLinx Controllers. The interface allows you to control the Yealink video conferencing system through the touch panels installed in the control device.

When you successfully deploy environment and configure the AMX NetLinx Controllers, the Yealink video conferencing systems and the control devices, you can remotely manage certain features of your video conferencing system via the control device.

AMX NetLinx Controllers

The following table lists the products included in the AMX NetLinx Controllers.

NX-1200	NetLinx NX Integrated Controller
NX-2200	NetLinx NX Integrated Controller
NX-3200	NetLinx NX Integrated Controller
NX-4200	NetLinx NX Integrated Controller

In This Guide

Topics provided in this guide include:

- Chapter 1 [Deployment Environment](#)
- Chapter 2 [Debugging Process](#)
- Chapter 3 [Yealink VCS Panel Pages Overview](#)
- Chapter 4 [Frequently Asked Questions](#)

Deployment Environment

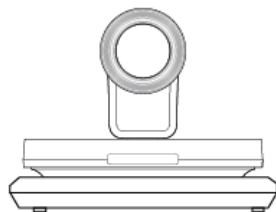
This chapter introduces the deployment environment, which instructs you to connect control and accessibility equipment. The Yealink video conferencing systems support TCP/IP connection and RS-232 connection. Topics include:

- [Hardware Deployment](#)
- [Software Programs](#)

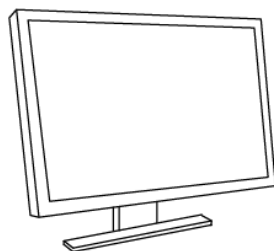
Hardware Deployment

Hardware Devices

- Yealink video conferencing systems (built-in API interface, firmware version X.21.0.10 or later)



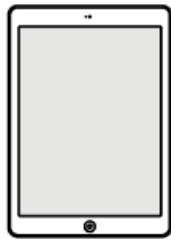
- A display device



- A PC



- **The control devices (iPad, etc.)**



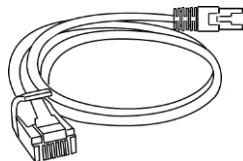
(Taking an iPad for example)

- **The AMX NetLinx Controllers**

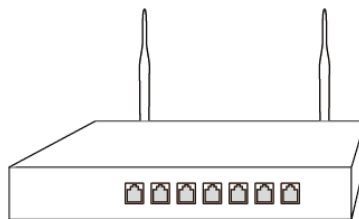


(Taking NX-1200/NetLinx®NX Integrated Controller for example)

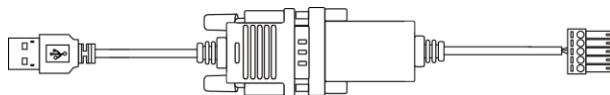
- **Ethernet cable**



- **A router (applying to TCP/IP connection)**



- **A USB to RS-232 cable (applying to RS-232 connection)**

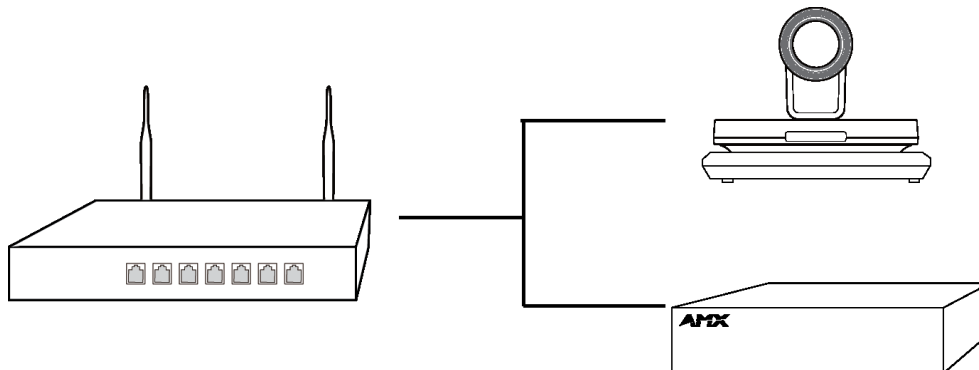


Hardware Connection

The Yealink video conferencing systems support TCP/IP connection and RS-232 connection.

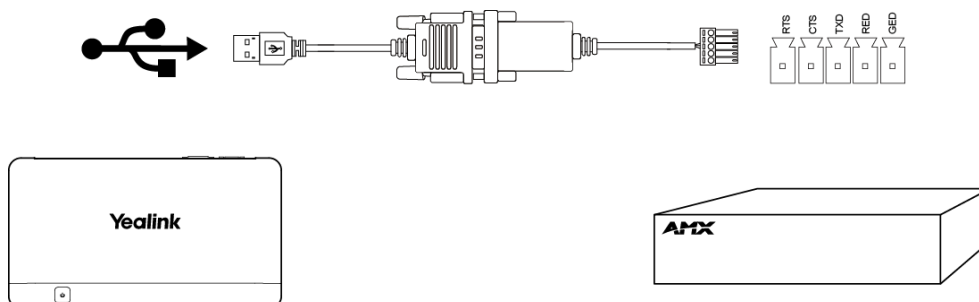
TCP/IP Connection

If you connect the AMX NetLinx Controller to the Yealink video conferencing system through TCP/IP connection, the AMX NetLinx Controller, the PC, the Yealink video conferencing system and the control device should be in the same network segment.



RS-232 Connection

If you connect the AMX NetLinx Controller to the Yealink video conferencing system through RS-232 connection, the AMX NetLinx Controller, the PC and the control device should be in the same network segment.




Software Programs

The software programs contain AMX software, AMX configuration programs and the control device configuration programs.

AMX Software

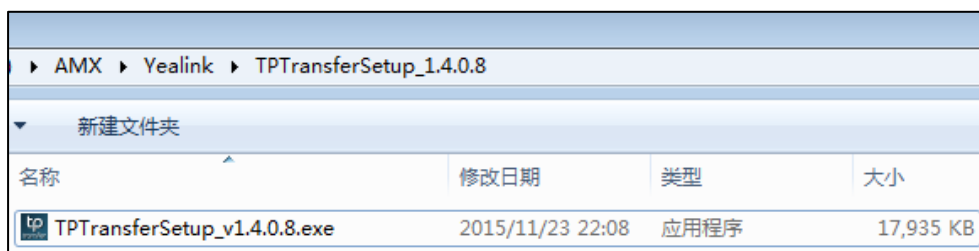
AMX software mainly refers to NetLinx Studio application and TPTransfer application. NetLinx Studio is used to import the corresponding configuration program into the AMX NetLinx Controller. And the TPTransfer is used to the UI file into the control device.

NetLinx Studio application:



名称	修改日期	类型	大小
NetLinxStudioSetup_4_0_1017.exe	2014/6/23 15:15	应用程序	82,544 KB
ReadMe.txt	2014/6/23 15:15	文本文档	6 KB

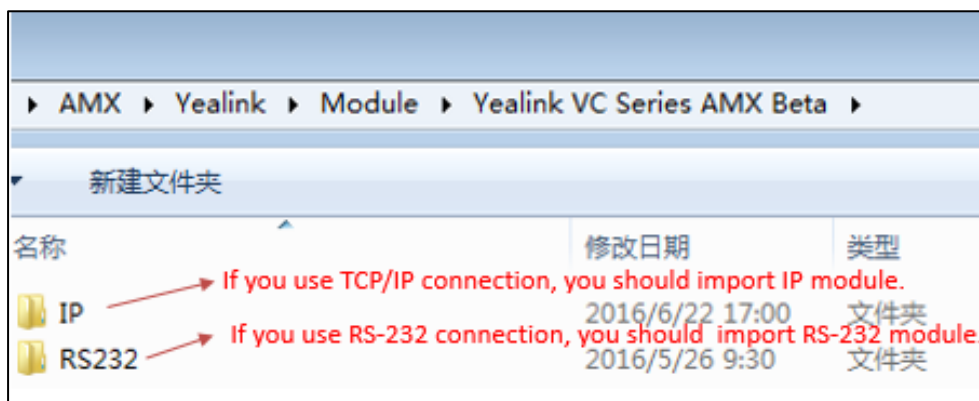
TPTransfer application:



名称	修改日期	类型	大小
TPTransferSetup_v1.4.0.8.exe	2015/11/23 22:08	应用程序	17,935 KB

AMX Configuration Programs

Yealink provides two kinds of modules as the configuration programs. The modules contain a TCP/IP module and a RS-232 module. The selection of modules is depending on connection methods you use.



名称	修改日期	类型
IP	2016/6/22 17:00	文件夹
RS232	2016/5/26 9:30	文件夹

Only one of these connection methods can be used at once.

TCP/IP Module

If you connect the AMX NetLinx Controller to Yealink video conferencing system through

TCP/IP connection, you should use TCP/IP module. And the IP address of Yealink video conferencing system should be written in the configuration file.

AMX > Yealink > Module > Yealink VC Series AMX Beta > IP > IP - 10.2.10.200				
新建文件夹				
名称	修改日期	类型	大小	
Yealink VC Series Example 10.2.10.200.tkn	2016/5/11 14:51	TKN 文件	2,037 KB	

Only a .tkn file requires importing into the AMX NetLinx Controller.

RS-232 Module

If you connect the AMX NetLinx Controller to Yealink video conferencing system through the RS-232 connection, you should use RS-232 module, you need connect the RS-232 serial port in AMX NetLinx Controller to the USB port in your video conferencing system codec through a USB to RS-232 cable. Only a .tkn file requires importing into AMX NetLinx Controller.

AMX > Yealink > Module > Yealink VC Series AMX Beta > RS232				
新建文件夹				
名称	修改日期	类型	大小	
Yealink VC Series Example RS232.tkn	2016/5/11 14:52	TKN 文件	2,037 KB	

RS-232 serial port in the NX-1200/NetLinx® NX Integrated Controller:



Control Device Configuration Programs

Control device configuration programs mainly refer to touch panels' configuration programs. The touch panels are installed in the control device.

The following table lists the configuration programs required in an iPad:

iPad	TPControl application and .TP4 file. For more information, please refer to Installing Touch Panels in an iPad on page 11.
------	--

For more information about the software programs required in other control devices, please contact AMX.

Debugging Process

This chapter provides the debugging process. The RS-232 connection is introduced for example. Topics include:

- [Installing NetLinx Studio](#)
- [Installing TPTransfer](#)
- [Importing Modules](#)
- [Installing Touch Panels](#)

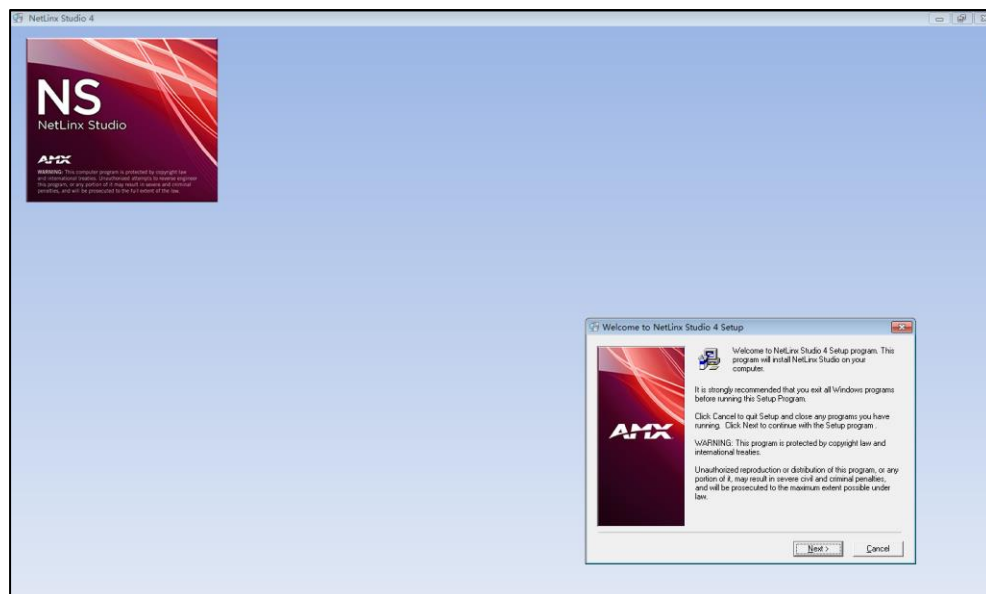
Installing NetLinx Studio

To connect the AMX NetLinx Controller to Yealink video conferencing system, you need install NetLinx Studio application to import Yealink modules to AMX NetLinx Controller.

To install NetLinx Studio in a PC:

1. Double-click NetLinx Studio application.

The NetLinx Studio Setup Wizard is displayed as below:



2. Follow the default installation process.

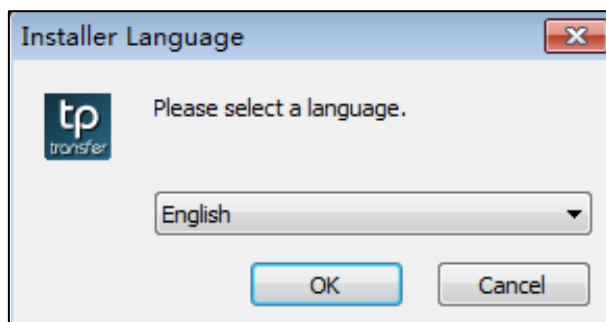
Installing TPTransfer

You need install TPTransfer application to import UI files to the control device. The control

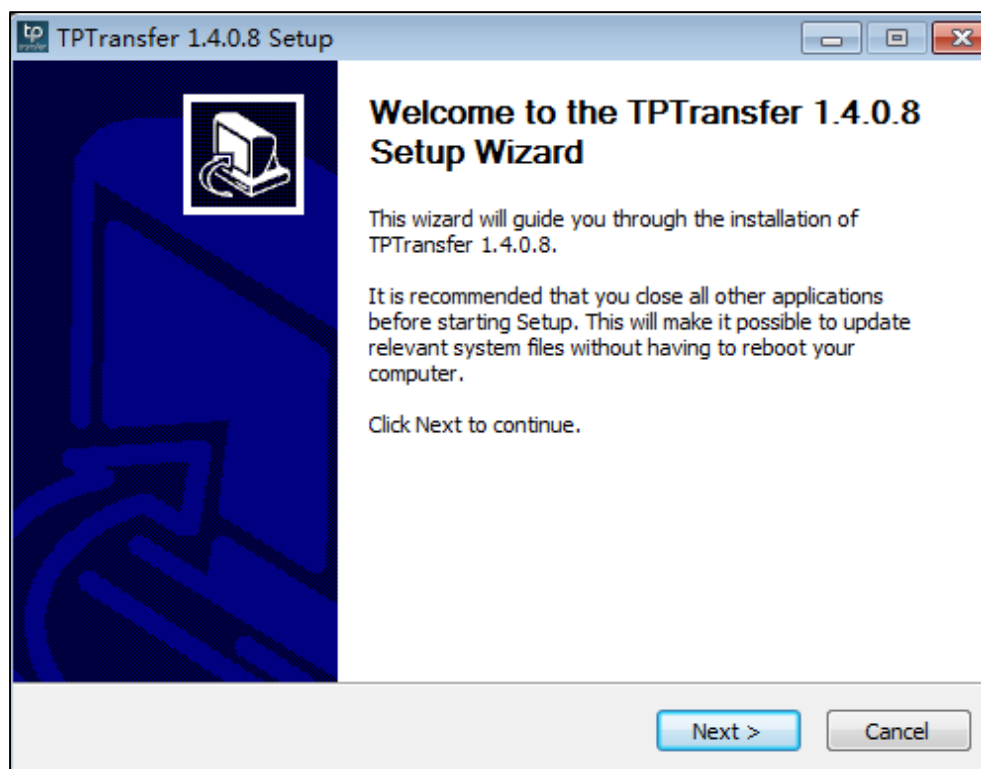
device interacts and operates seamlessly with the AMX NetLinx controller, just like other native AMX system components.

To install TPTransfer in a PC:

1. Double-click TPTransfer application.
2. Select the desired language, and then click **OK**.



The TPTransfer Setup Wizard is displayed as below:




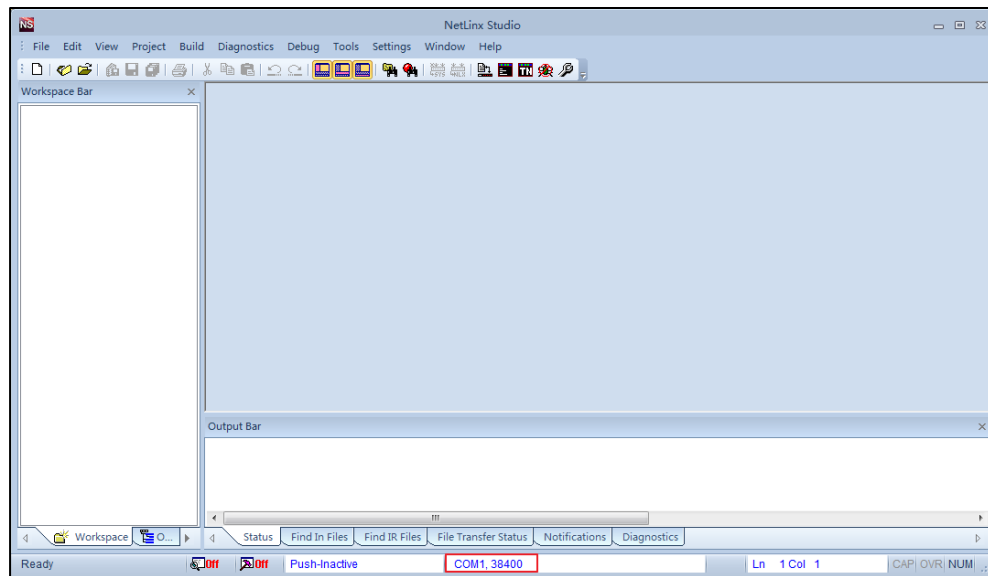
3. Follow the default installation process.

Importing Modules

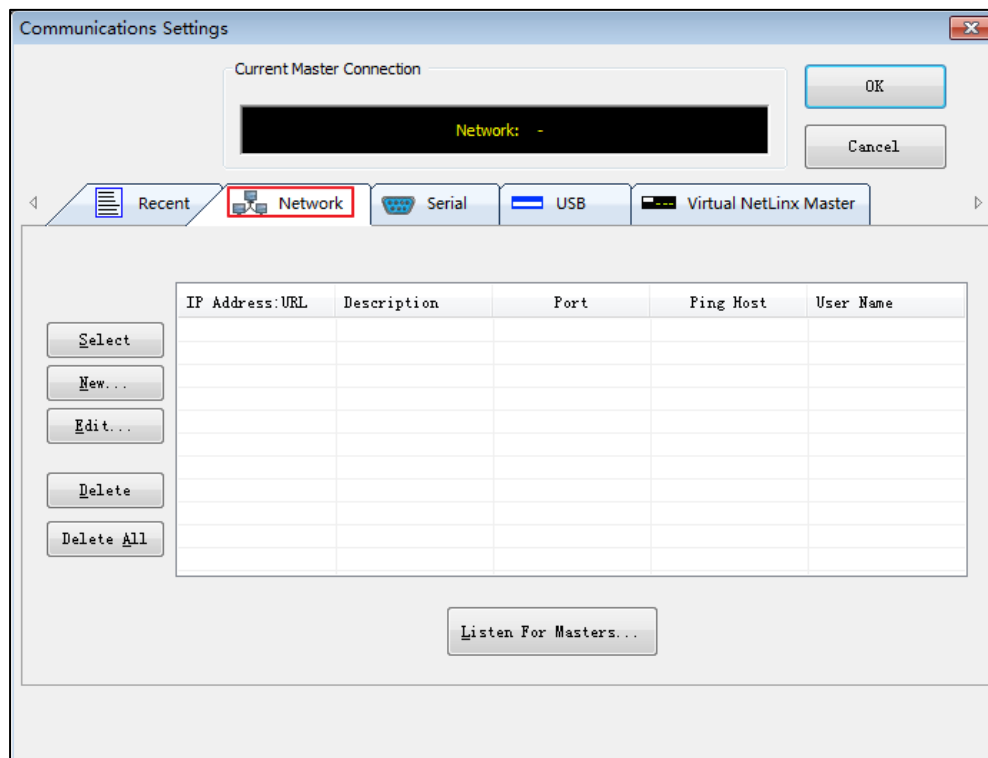
Importing a RS-232 module into the AMX NetLinx Controller is introduced for an example.

To import modules by NetLinx Studio:

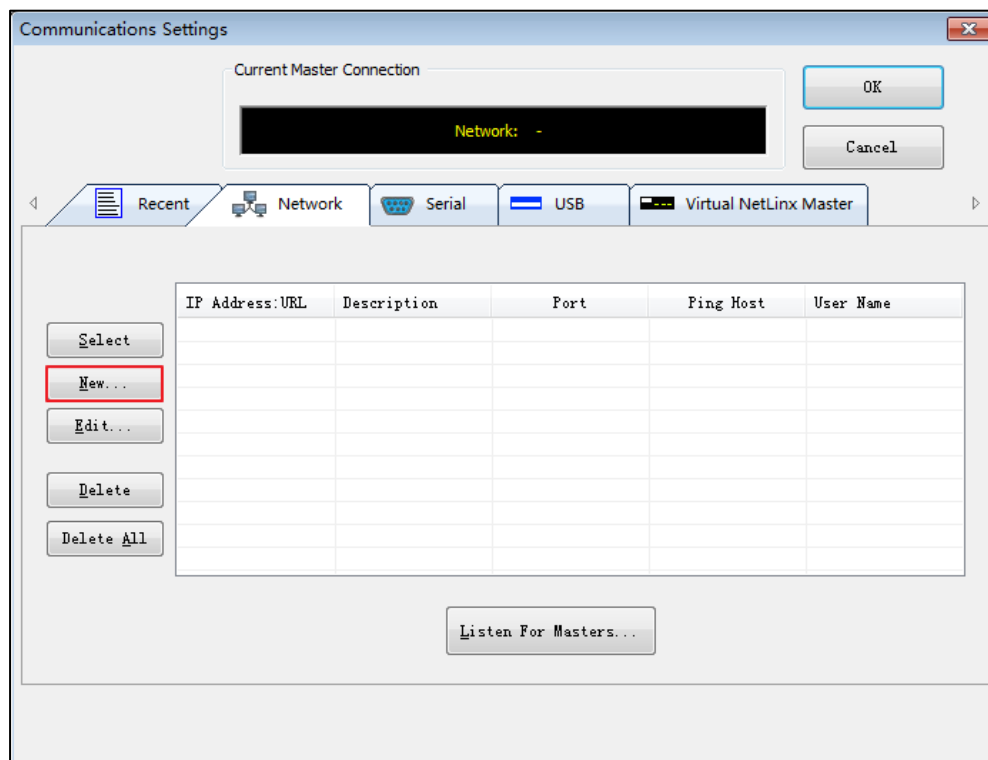
1. Double-click NetLinx Studio application icon .
2. Click the connection details.



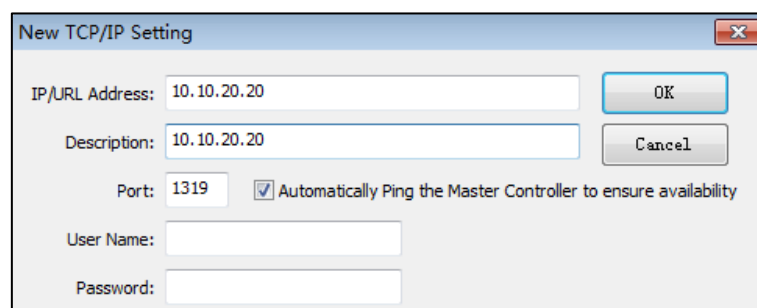
3. Click **Network**.



4. Click **New**.

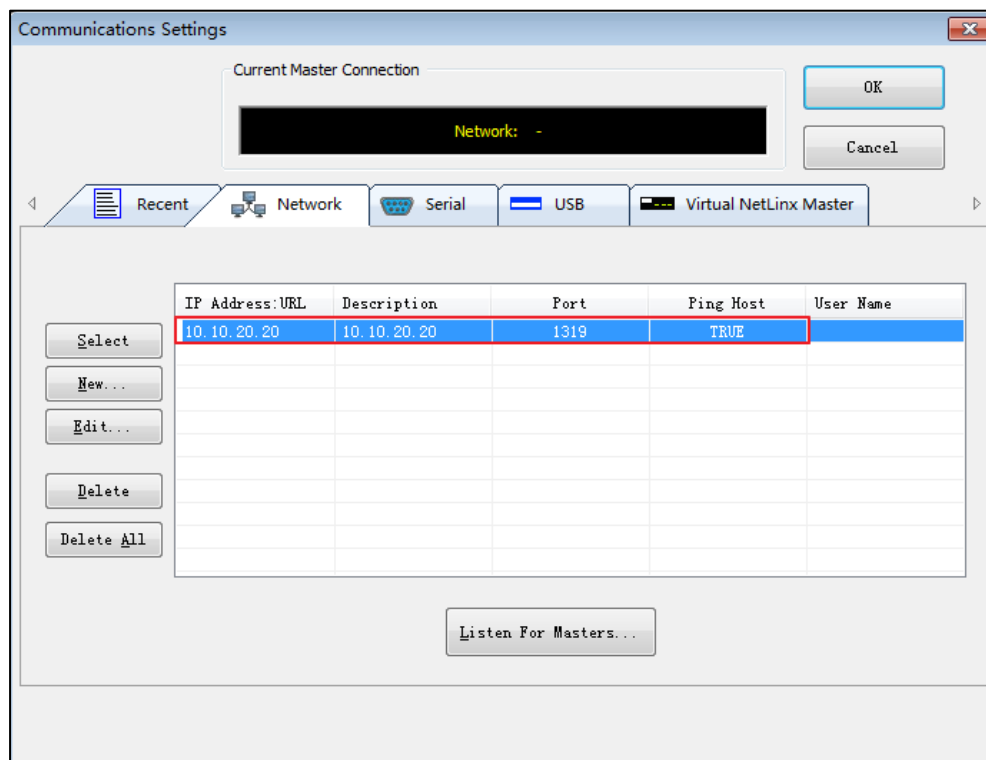


5. Enter the IP address of the AMX NetLinx Controller in the **IP/URL Address** field and the desired name in the **Description** field.



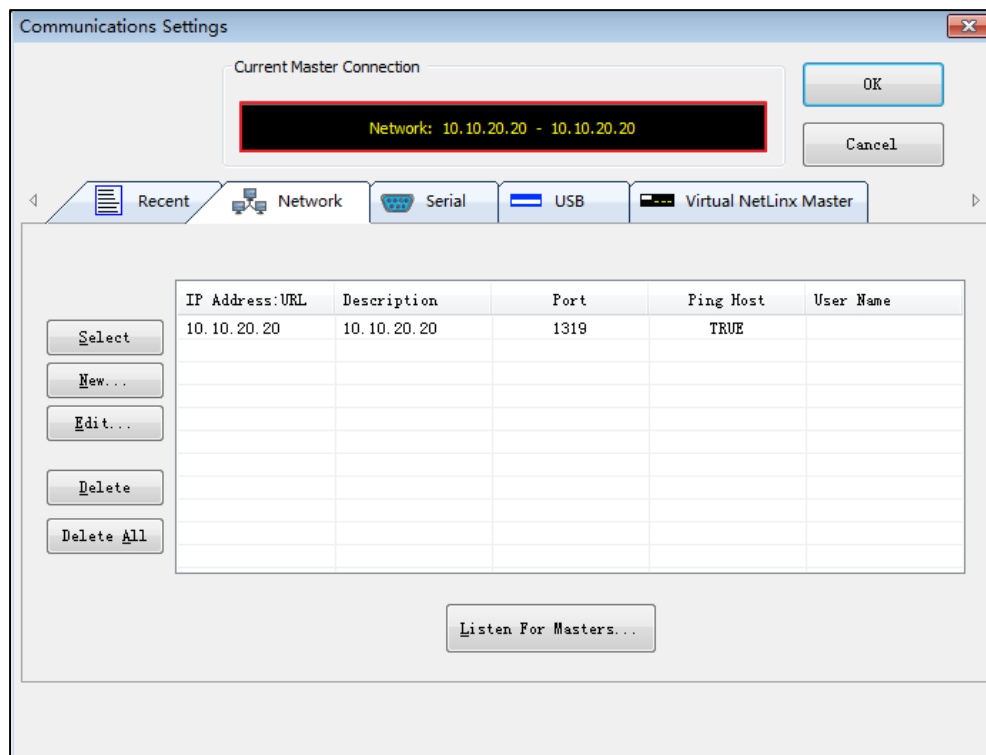
6. Click **OK**.

7. Select the IP/URL address you created.



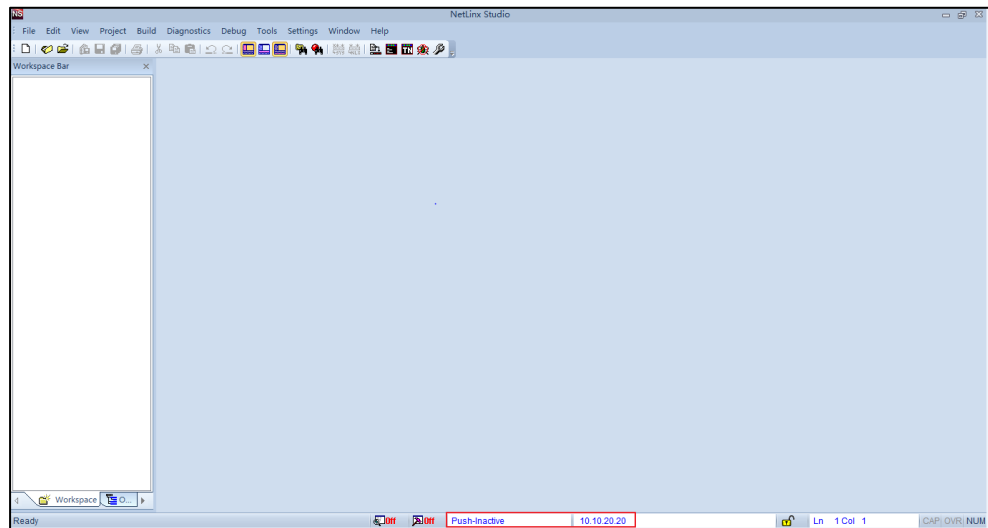
8. Click **Select**.

The IP/URL address and description are displayed in **Current Master Connection** field:



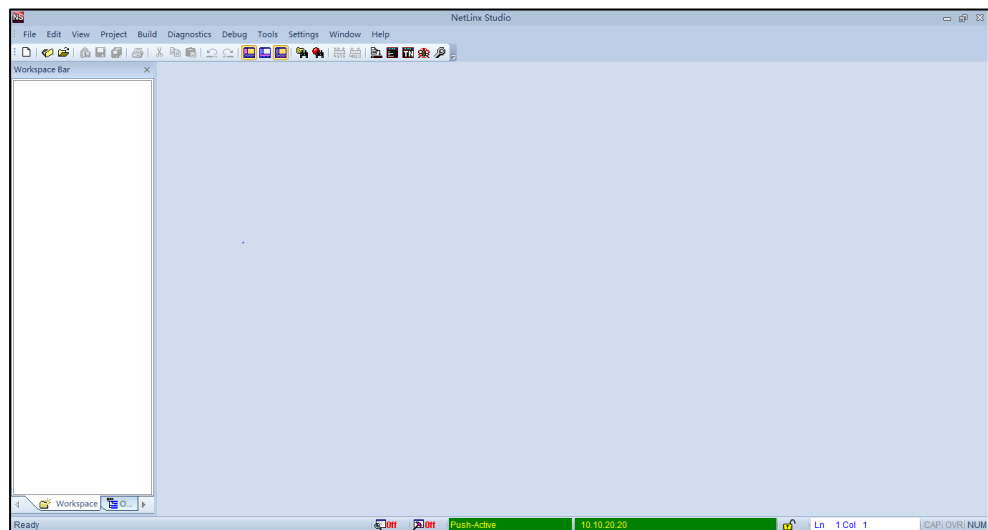
9. Click **OK**.

The status bar is shown as below:



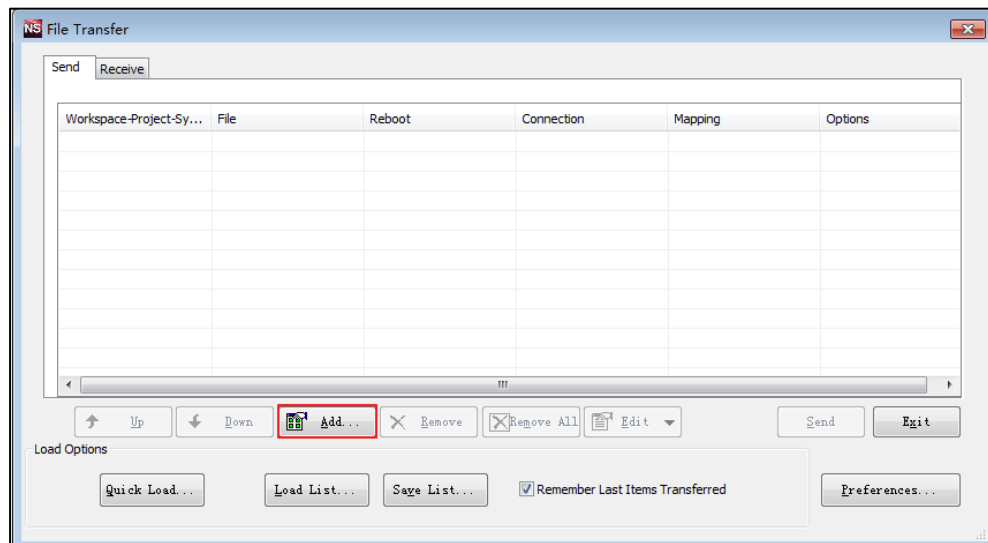
10. Click **Push-Inactive**.

When the NetLinx Studio application connects to the AMX NetLinx Controller successfully, the following field turns to green.

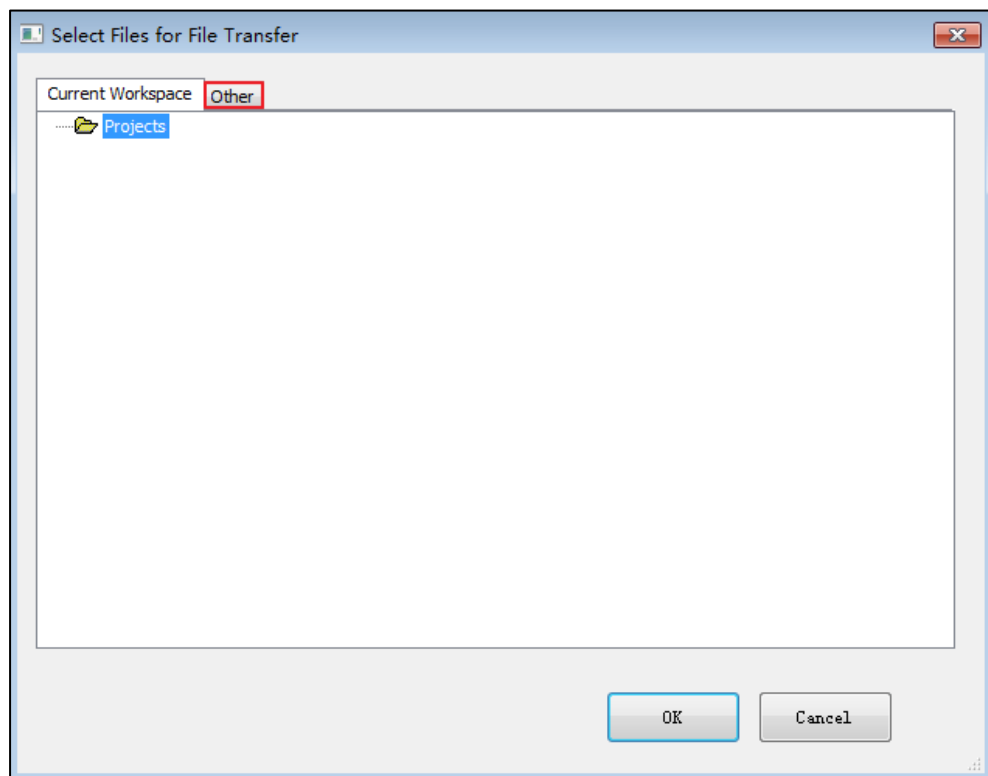


11. Click on **Tool->File Transfer**.

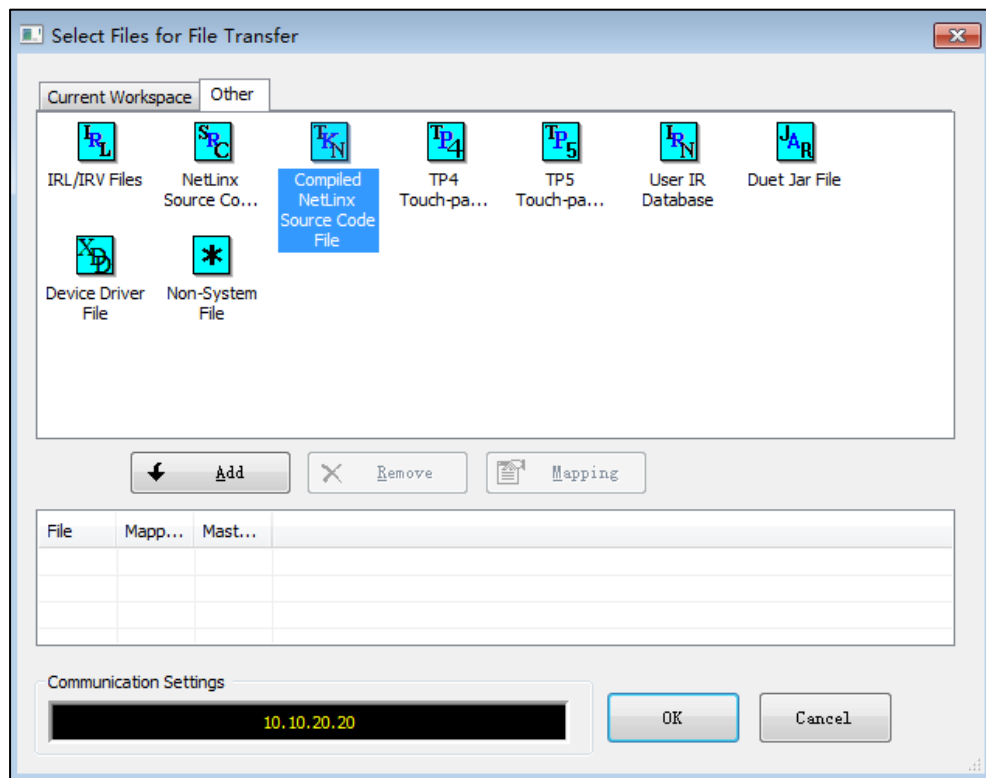
12. Click **Add**.



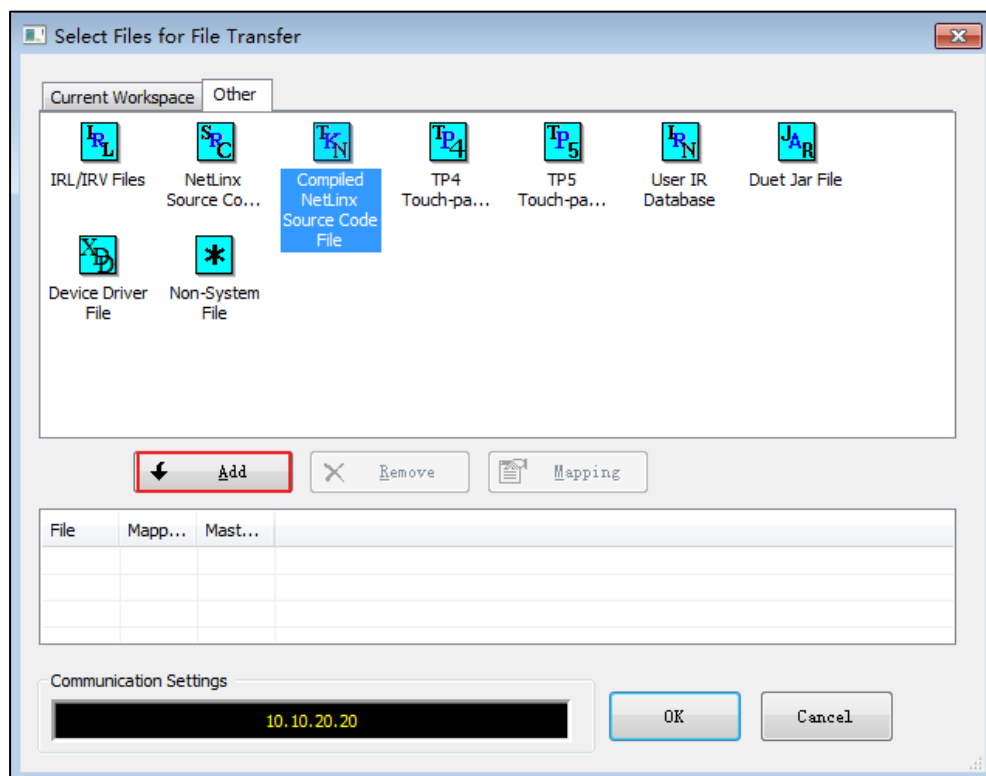
13. Click on **Other**.



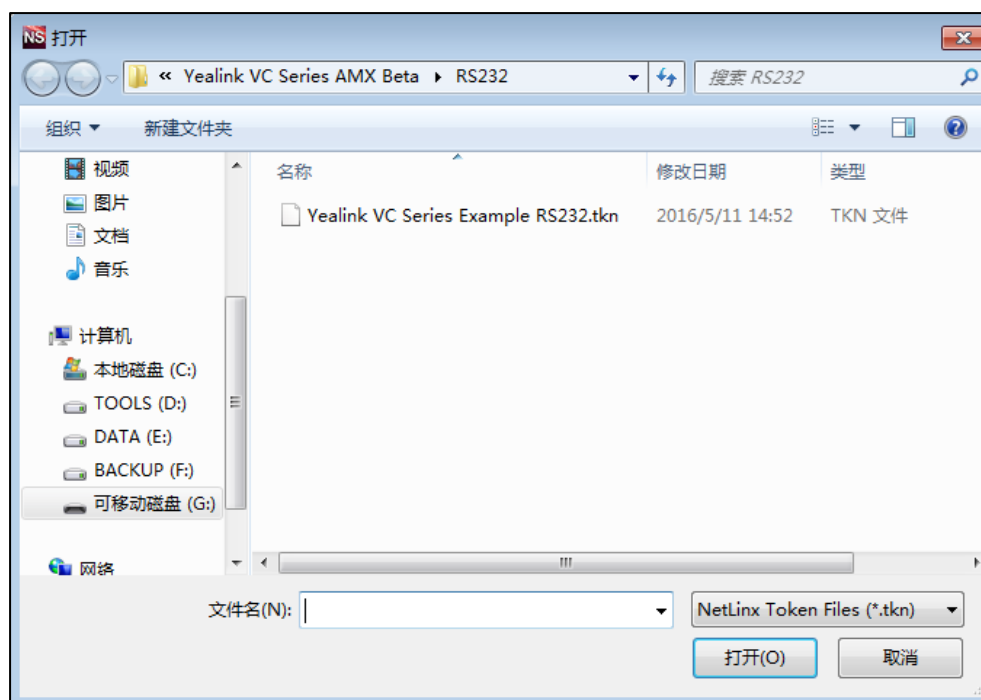
14. Select the **Compiled NetLinx Source Code File**.



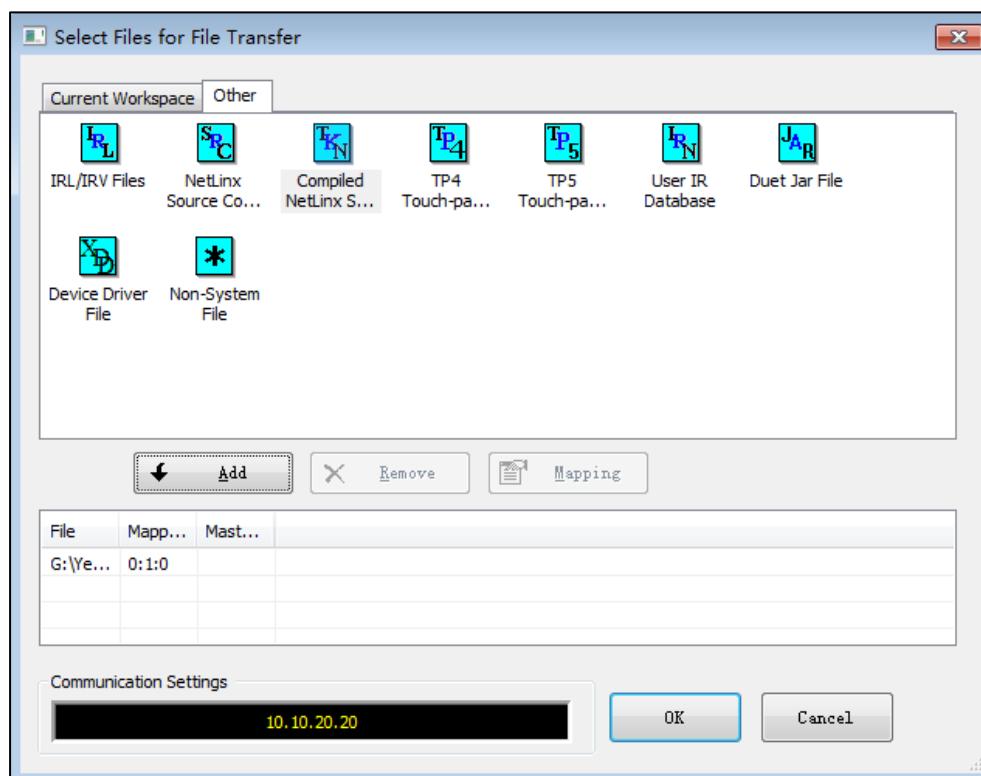
15. Click **Add**.



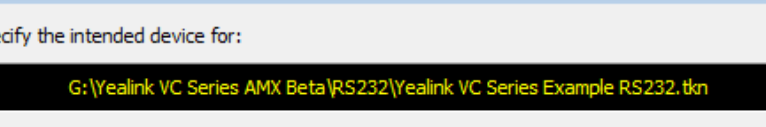
16. According to the RS-232 connection method, select a .tkn file.



17. Click OK.



18. Click OK.



Enter Device Mapping Information

Please specify the intended device for:

G:\Yealink VC Series AMX Beta\RS232\Yealink VC Series Example RS232.tkn

Device Number: 0

Port Number: 1

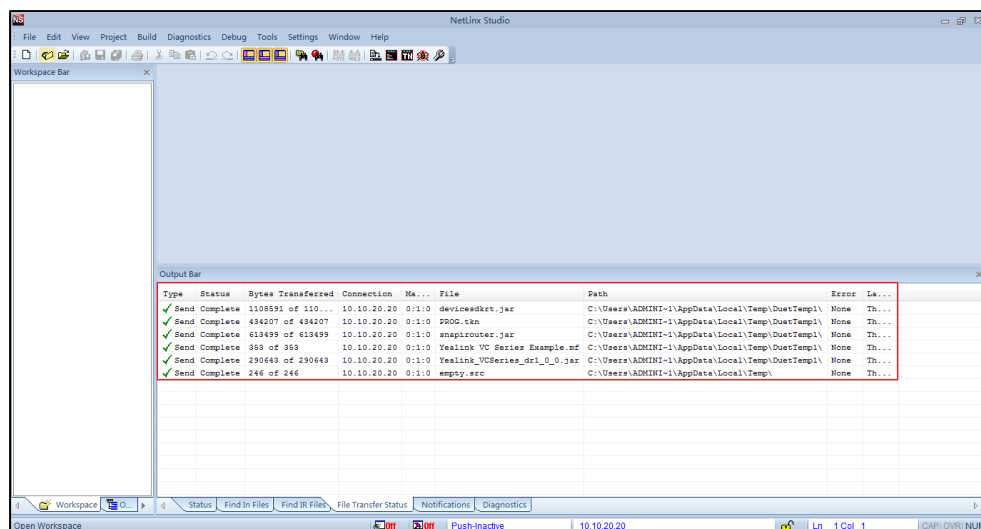
System Number: 0

OK Cancel

19. Click **Send**.

The screenshot shows the NS File Transfer application window. At the top is a title bar with the NS logo and the text "File Transfer". Below the title bar are two tabs: "Send" (selected) and "Receive". The main area contains a table with columns: Workspace-Project-Sy..., File, Reboot, Connection, Mapping, and Options. The first row has a checked checkbox in the first column, a file path "G:\Yealink VC Series A..." in the second, a checked checkbox in the third, the IP address "10.10.20.20" in the fourth, the mapping "0:1:0" in the fifth, and an empty sixth column. Below the table is a horizontal scrollbar. At the bottom of the window is a toolbar with icons for Up, Down, Add... (with a folder icon), Remove (with an X icon), Remove All (with a red X icon), and Edit (with a pencil icon). To the right of the toolbar are two buttons: "Send" (highlighted with a blue border) and "Exit". Below the toolbar is a section labeled "Load Options" containing four buttons: "Quick Load...", "Load List...", "Save List...", and "Remember Last Items Transferred" (which has a checked checkbox next to it). On the far right of this section is a button labeled "Preferences...".

Please wait a few minutes. After the dialog box is shown as below, the send process is finished. The Yealink video conferencing system connects to AMX NetLinx Controller successfully.



Installing Touch Panels

You can remotely control the Yealink video conferencing system through the touch panels installed in the control device (iPad, etc.). The iPad is used as the control device for example, if you want to customize other control device, please contact AMX.

Installing Touch Panels in an iPad

To install touch panels in an iPad:

1. From the Apple App Store, search for **TPControl** and download the application in your iPad.

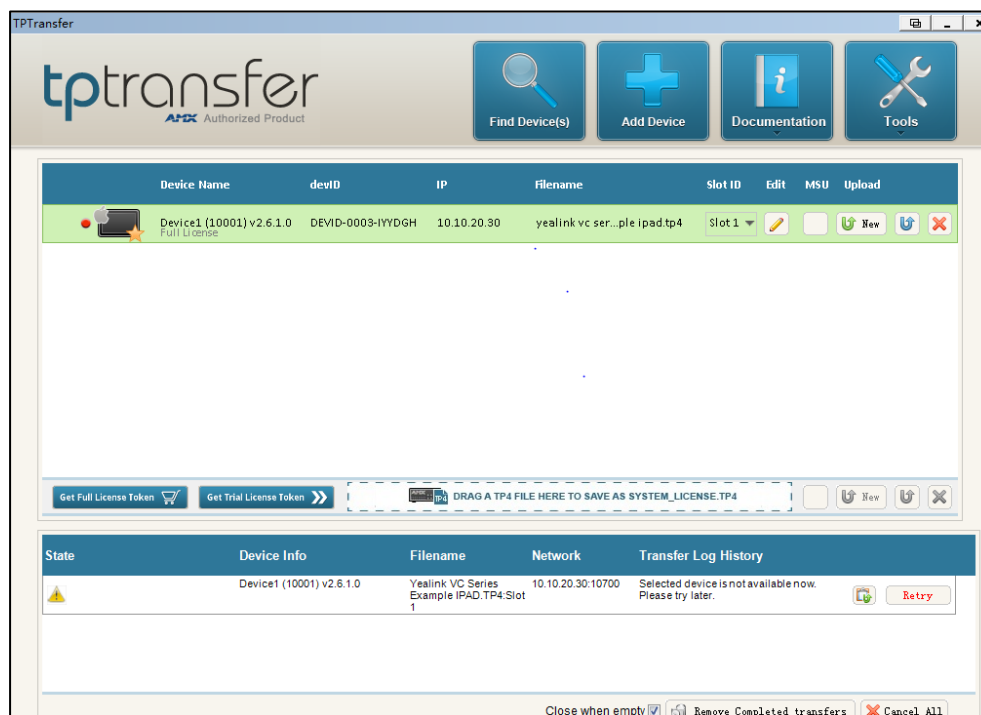
You will now have a shiny new **TPControl** icon  on your HOME screen.

2. Touch the icon  to enter the TPControl in your iPad.

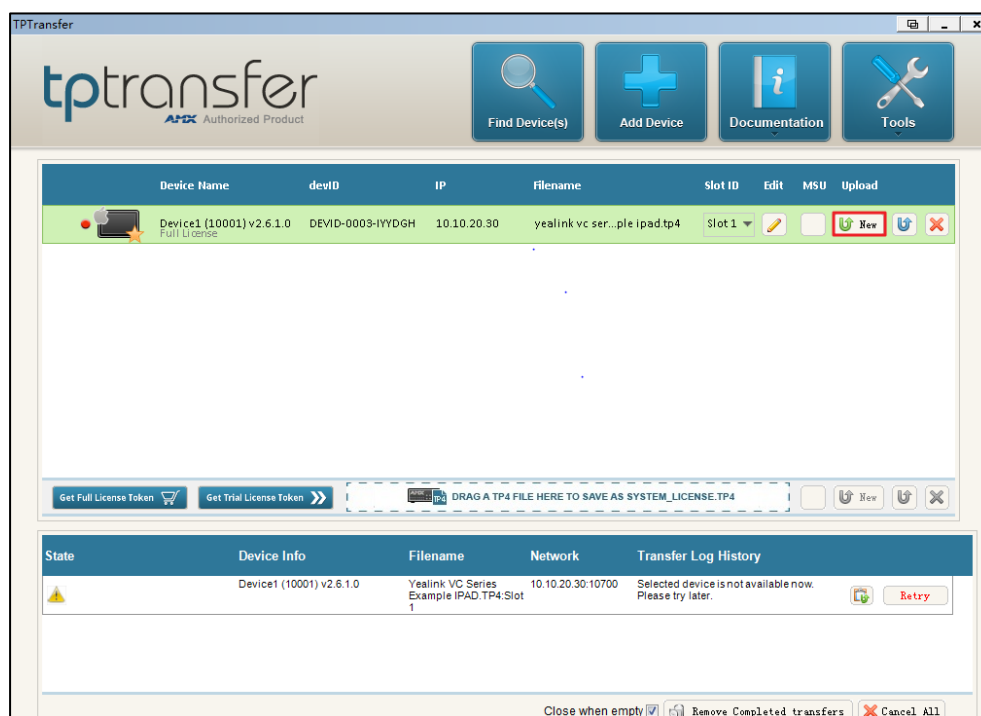
You need use the license obtained from the AMX seller to connect the control device to AMX NetLinx Controller and configure the settings available within control device. For more information, please contact AMX.

3. Double-click TPTransfer application icon  in your PC.

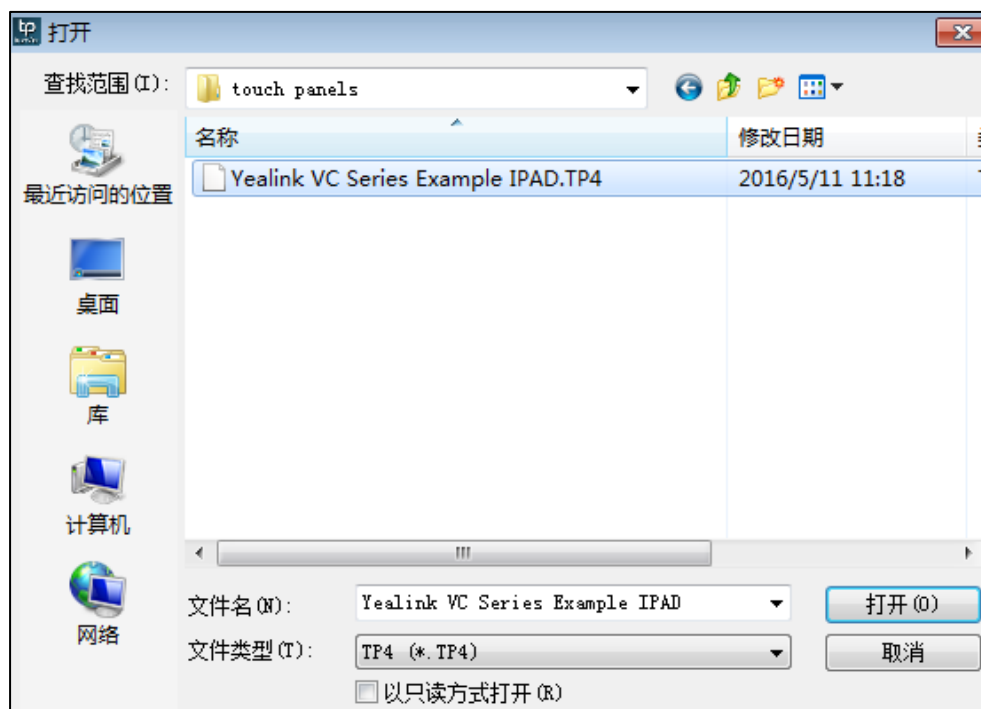
When the iPad and the PC are in the same network segment, the screen will be displayed as below:



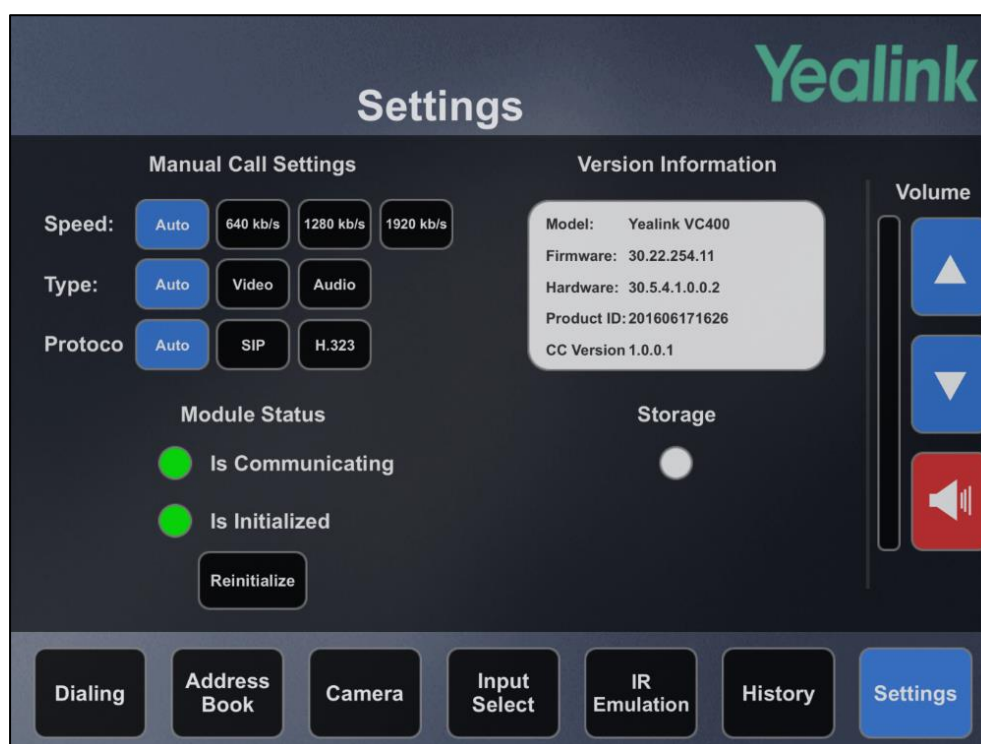
4. (Optional.) If you want to import a new UI file, click **New** to send the new .TP4 file to the iPad.



5. Select a .TP4 file.



6. After you enter the touch panels, touch **Settings** to navigate to the Settings page.



If you can view the version information normally, it means the touch panels in an iPad are installed successfully.

Yealink VCS Panel Pages Overview

Every page in touch panels includes a menu for navigating to a different page. Many of the pages in touch panels also include buttons for increasing or decreasing the volume and muting the microphone. This chapter provides instructions for the Yealink VCS panel pages overview. The touch panels in an iPad are introduced for example. Topics include:

- [Yealink Logo Page](#)
- [Dialing Page](#)
- [Address Book Page](#)
- [Camera Page](#)
- [Input Select Page](#)
- [IR Emulation Page](#)
- [History Page](#)
- [Settings Page](#)

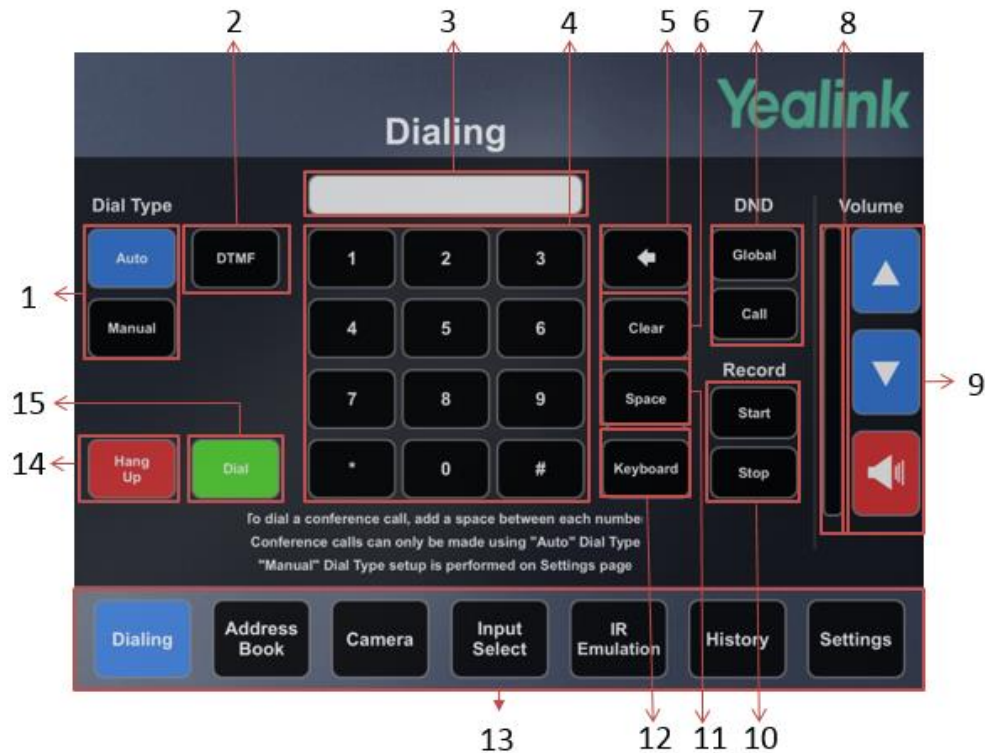
Yealink Logo Page


The Yealink Logo page is displayed after you have loaded the touch panels. Touch the Yealink Logo page to navigate to the **Dialing** page.






Dialing Page

On the **Dialing** page, you can manually dial and hang up a call.



No.	Name	Description
1	Dial type	Specifies the preferred call type for placing calls. <ul style="list-style-type: none"> If you select Auto, the dial type is determined by the configurations on your video conferencing system. If you select Manual, the dial type is determined by the configurations on your Settings page. For more information, please refer to Settings Page on page 27.
2	DTMF	Sends DTMF tones.
3	Input box	Displays the calling information you entered.
4	Keypad	Provides numbers, “#” and “.”. If you want to dial a conference call, you should add a space between each phone number.
5		Deletes a character each time.

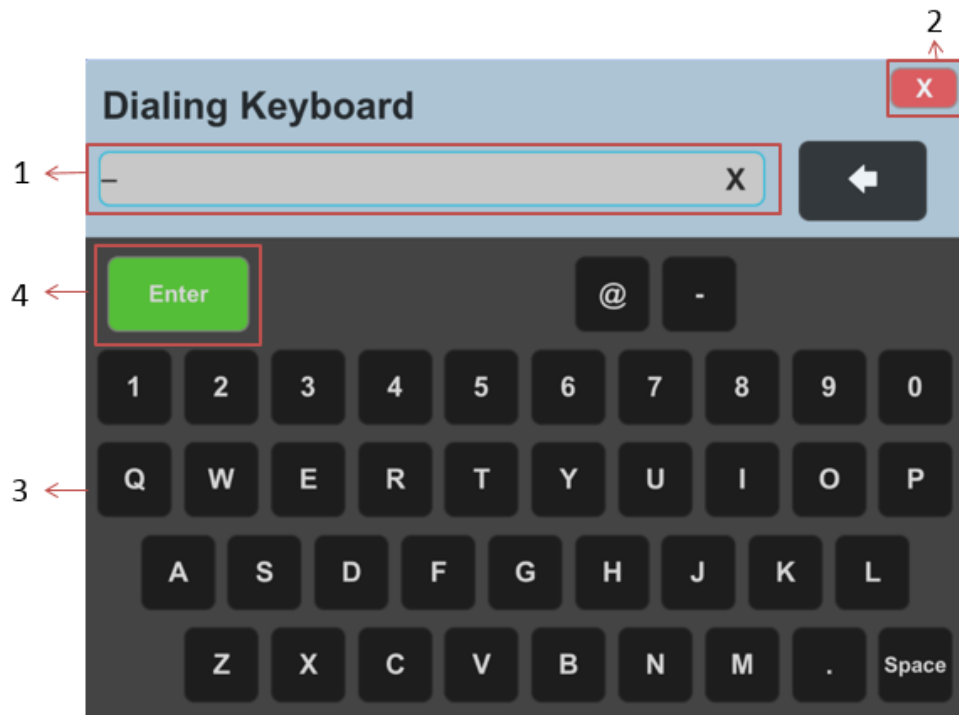
No.	Name	Description
6	Clear	Clears all calling information you entered.
7	DND	<p>Configures the type of Do Not Disturb.</p> <ul style="list-style-type: none"> If you select Global, DND mode applies to global setting. If you select Call during a call, DND mode applies to the current call.
8	Bar graph	Reflects the current volume level.
9	Volume	<ul style="list-style-type: none"> Touches  to increase the volume. Touches  to decrease the volume. Touches  to mute the microphone.
10	Record	Starts/Stops recording video.
11	Space	Enters spaces.
12	Keyboard	<p>Opens the Dialing keyboard.</p> <p>For more information, please refer to Dialing Keyboard Page on page 18.</p>
13	Shortcut Keys	Navigates to the corresponding page.
14	Hang up	Hangs up the current call.
15	Dial	Places a call.


Dialing Keyboard Page

To enter the Dialing Keyboard page:

1. Touch **Dialing** to navigate to the Dialing page.

2. Touch **Keyboard** button to enter the Dialing Keyboard page.



No.	Name	Description
1	Input box	Displays the calling information you entered.
2		Closes the Dialing keyboard and return to the dialing page.
3	Keyboard	Provides the QWERTY keyboard to enter the calling information.
4	Enter	Finishes entering the calling information and returns to the Dialing page.

Address Book Page

Touch **Address Book** to navigate to the Address Book page.



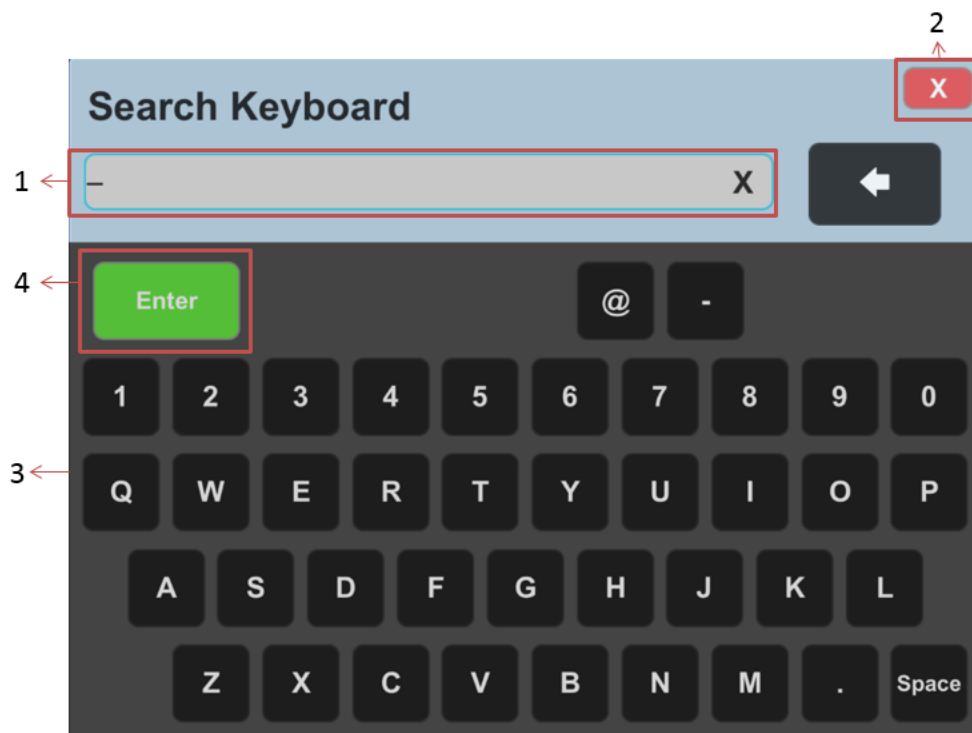
No.	Name	Description
1	Type	Provides the selection of address book type. <ul style="list-style-type: none"> If you select All, you can view all contacts. If you select Local, you can view the local contacts. If you select Conf, you can view the conference contacts.
2	Contact Details	Display the information of the contacts in the selected address book.
3	Page	Turns pages. If the number of contacts is more than one page, you can press ▲ or ▼ to turn pages. The center text indicates the current page and total pages.
4	Search	Opens the Search Keyboard. For more information, please refer to Search Keyboard Page on page 21.
5	Text field	<ul style="list-style-type: none"> Displays the total number of contacts in the current address book in the selected address


No.	Name	Description
		book. <ul style="list-style-type: none"> Displays the total number of the search results.

Search Keyboard Page

To enter the Search Keyboard page:

1. Touch **Address Book** to navigate to the Address Book page.
2. Touch **Search** button to enter the Search Keyboard page.



No.	Name	Description
1	Input box	Displays the search information you entered.
2		Closes the keyboard and return to the Address Book page.
3	Keyboard	Provides the QWERTY keyboard to enter the search information.
4	Enter	Performs a search.

Camera Page

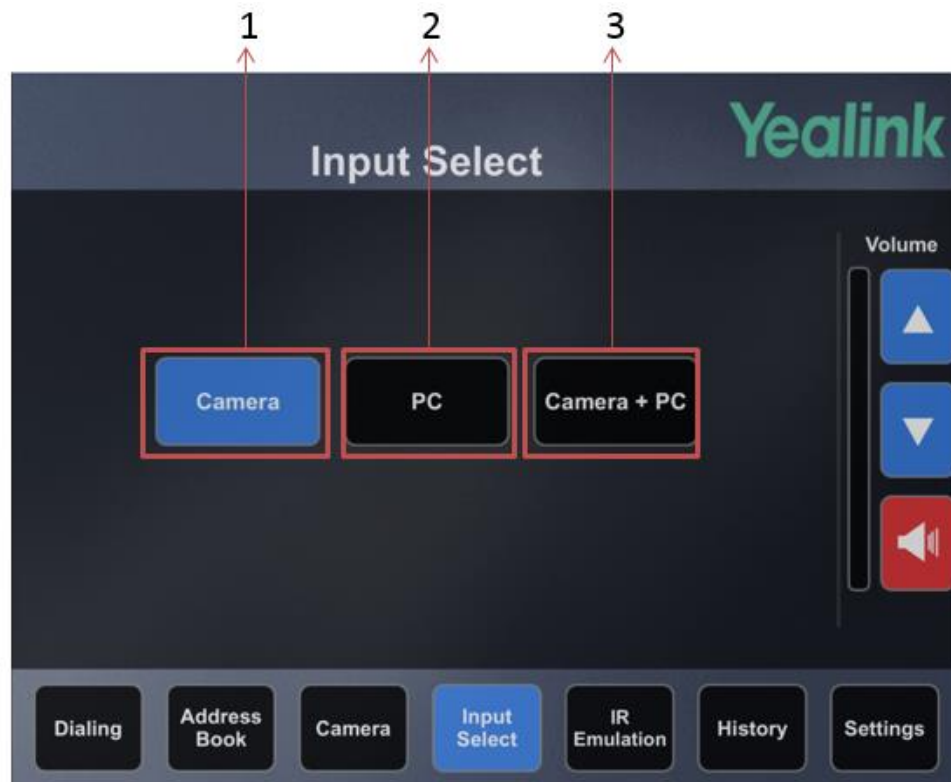
Touch **Camera** to navigate to the Camera page. On this page, you can move the camera, store the preset.



No.	Name	Description
1	Zoom out Key	<ul style="list-style-type: none"> Decreases the camera zoom or the captured image magnifications. Behaves as page down in a multiple page list.
2	Zoom in Key	<ul style="list-style-type: none"> Increases the camera zoom or the captured image magnifications. Behaves as page up in a multiple page list.
3	Navigation Key	In the idle screen, pan and tilt the camera to adjust the viewing angle.
4	Preset	<p>Stores the preset position of the camera or adjust the camera to the preset.</p> <p>You can long touch any numeric key (0-9) to save the current preset position of the camera.</p>

Input Select Page

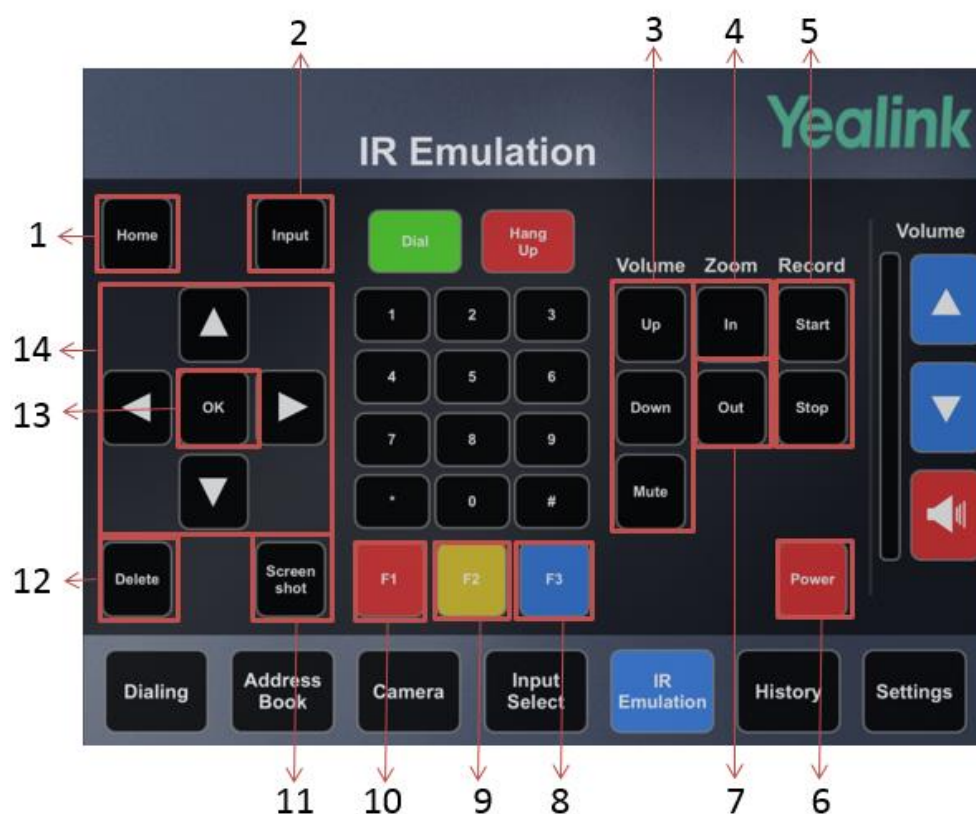
Touch **Input Select** to navigate to the Input Select page.







No.	Name	Description
1	Camera	Displays Camera input source.
2	PC	Displays PC input source.
3	Camera+PC	Displays Camera + PC input source.

IR Emulation Page

Touch **IR Emulation** to navigate to the IR Emulation page. The IR Emulation page provides 3 shortcut keys (F1, F2, F3). They can help users organize conference easily with intuitive and efficient operation in all pages.



No.	Name	Description
1	Home	<ul style="list-style-type: none"> Returns to the idle screen when in the menu screen. Enters the pre-dialing screen during a call.
2	Input	Switches the input source between Camera, Camera and PC, or PC.
3	Volume	<ul style="list-style-type: none"> Touches Up button to increase the volume. Touches Down button to decrease the volume. Touches Mute button to mute the microphone.
4	Zoom in Key	<ul style="list-style-type: none"> Increases the camera zoom or the captured image magnifications. Behaves as page up in a multiple page list.

No.	Name	Description
5	Record	Starts/Stops recording video.
6	Power	Puts the endpoint to sleep or wakes the endpoint up.
7	Zoom out Key	<ul style="list-style-type: none"> Decreases the camera zoom or the captured image magnifications. Behaves as page down in a multiple page list.
8	F3	<p>Identifies context-sensitive features.</p> <p>In the idle screen, this is used to save and check the camera preset position, and corresponds to the Preset soft key.</p>
9	F2	<p>Identifies context-sensitive features.</p> <p>In the idle screen, this is used to enter the pre-dialing screen, and corresponds to the Call soft key.</p>
10	F1	<p>Identifies context-sensitive features.</p> <p>In the idle screen, this is used to enter main menu screen, corresponds to the Menu soft key.</p>
11	Screenshot	Captures the image from the camera.
12	Delete	<ul style="list-style-type: none"> Deletes the calling information you entered. Long press to delete all characters in the input field.
13	Navigation Key	<ul style="list-style-type: none"> In the menu screen, press  or  to switch menus, press  or  to select items. In the idle screen, pan and tilt the camera to adjust the viewing angle.
14	OK Key	Confirms actions or answers incoming calls.

History Page

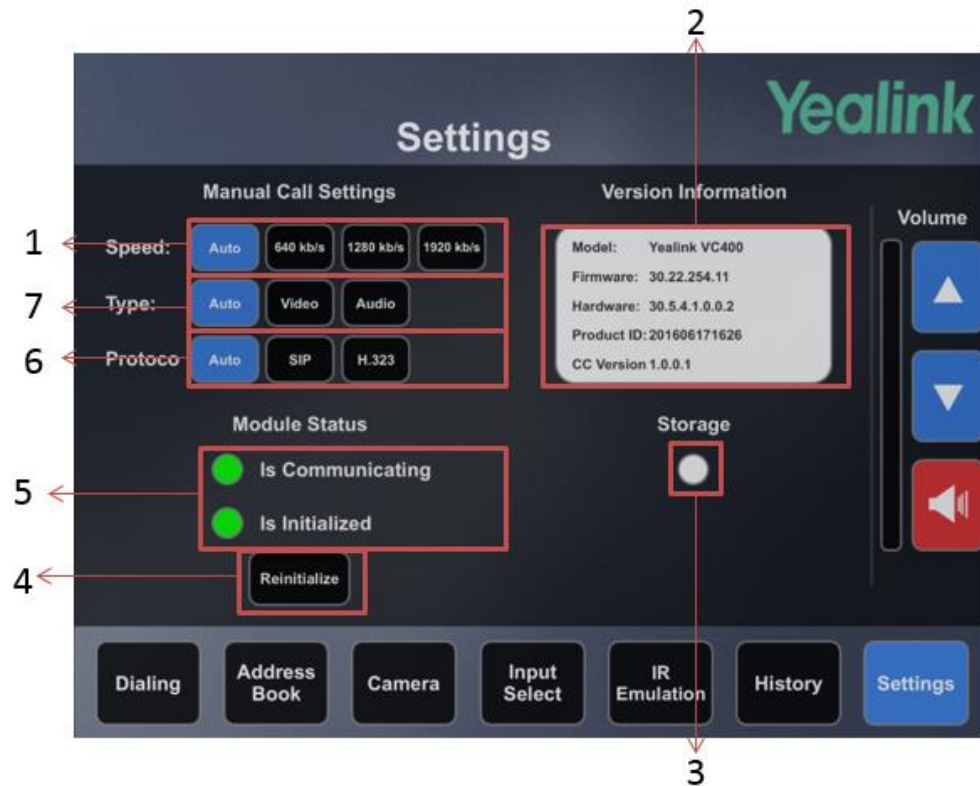
Touch **History** to navigate to the History page.



No.	Name	Description
1	Type	Provides the selection of call history type. It contains all calls, placed calls, received calls and missed calls.
2	Page	Turns pages. If the number of entries is more than one page, you can press ▲ or ▼ to turn pages.
3	Text field	Displays the total amount of entries in the selected call history type.

Settings Page

Touch **Settings** to navigate to the Settings page.



No.	Name	Description
1	Speed	Specifies the preferred call speed for placing calls.
2	Version information	Displays the information of the Yealink video conferencing system.
3	Storage	Displays the status of storage. If you insert a USB flash drive to one of the two USB port for storing screenshots and recording videos, the icon will turn to green.
4	Reinitialize	Reinitializes the NX-1200/NetLinx®NX Integrated Controller.
5	Module status	Indicates the status of the NX-1200/NetLinx®NX Integrated Controller.
6	Protocols	Specifies the preferred protocol for placing calls.
7	Type	Specifies the preferred call type for placing calls.

Frequently Asked Questions

This chapter provides the solutions to common issues to help you solve problems you might encounter. Upon encountering a scenario not listed in this section, contact your Yealink FAE for further support.

Why does the control device fail to connect with AMX NetLinx Controller?

- Ensure WiFi is enabled on the device, and that it is connected to the correct IP network. Furthermore, ensure the IP address assigned to the device is valid.
- Ensure whether the IP address of the iPad is in the same network segment of AMX NetLinx Controller.

