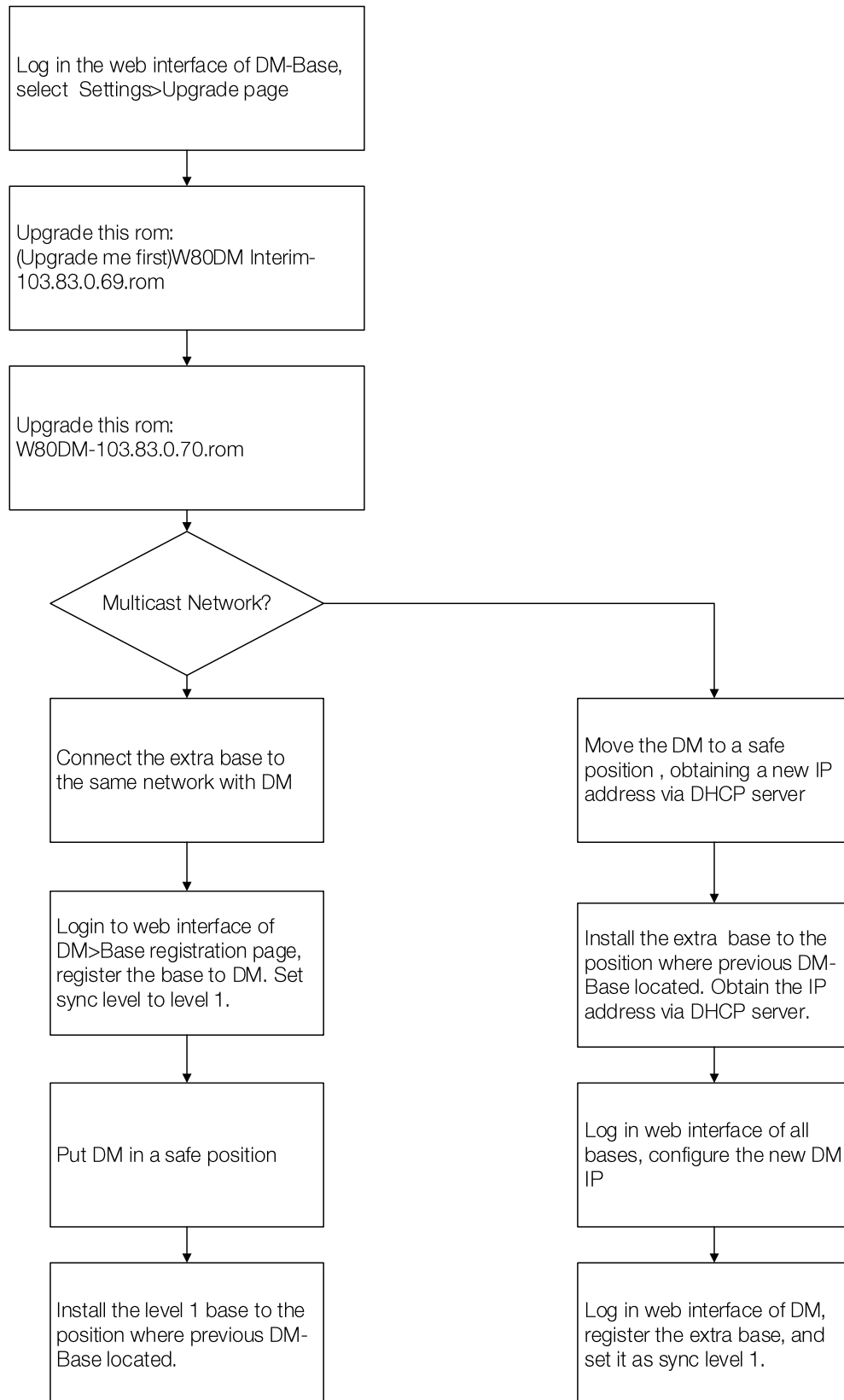


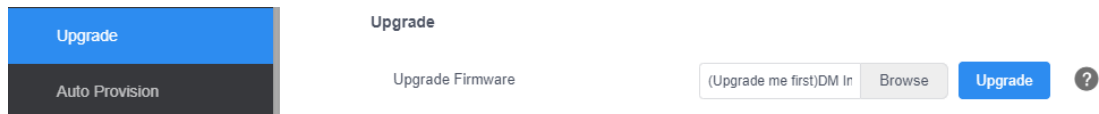
Upgrade guide for built system

To upgrade the built system without changing the system configuration, please follow the steps below.



1. For System established with DM-Base mode

- 1) Log into the DM-Base web page, go to Settings→ Upgrade. Locate to the interim version: (Upgrade me first)W80DM Interim-103.83.0.69.rom



Then the DM-Base will start upgrade to the interim version. When it finished, the Bases in the system will be synchronized to upgrade to this version.

- 2) After interim version upgrade finished, go to the same page, upgrade the DM to formal version (W80DM-103.83.0.70.rom). After that, the whole system will be upgrade successfully.



- 3) Since DM-Base changed to DM which does not working as a level 1 base. We need to add a level 1 base to the system. Do as follows:
 - A. If your system is in a multicast network
 - Connect an extra base to the same network with DM;
 - Login to DM page—Base registration page, register the base to DM.
 - Set sync level to level 1.
 - Install the level 1 base to the position where previous DM-Base located.
 - By doing this, the rebuild of the system is finished.
 - B. If your system is in a non-multicast network
 - Move the DM to a safe position , obtaining a new IP address via DHCP server
 - Install the extra base to the position where previous DM-Base located. Obtain the IP address via DHCP server.
 - Log in web interface of all bases, configure the new DM IPBy doing this, the rebuild of the system is finished.
 - Log in web interface of DM, register the extra base, and set it as sync level 1.

2. For System established with DM mode, please refer to the upgrade step 1) & 2). There is no need to install another base.

Notes:

If you do not use the firmware (Upgrade me first) DM Interim-103.83.0.69.rom to upgrade your system to an interim version first, the system may not work properly. But don't worry, you can take the following steps to recover your system:

- 1) Log into the web user interface of each base station (except W80DM) with its IP address of your multi-cell system.
- 2) Upload the firmware (Upgrade me first) DM Interim-103.83.0.69.rom to upgrade your system to an interim version first.
- 3) After this interim version is upgrade successfully, upload the firmware W80B-103.83.0.70.rom and upgrade.

(If the previously established system is in DM mode, it can now work normally. If it was in DM-Base mode, the next step is required.)

- 4) Since all Bases upgrade successfully, and the DM which does not work as a level 1 base. We need to add a level 1 base to the system. Do as follows:

A. If your system is in a multicast network

- Connect an extra base to the same network with DM;
- Login to DM page—Base registration page, register the base to DM.
- Set sync level to level 1.
- Install the level 1 base to the position where previous DM-Base located.
- By doing this, the rebuild of the system is finished.

B. If your system is in a non-multicast network

- Move the DM to a safe position, obtaining a new IP address via DHCP server
- Install the extra base to the position where previous DM-Base located. Obtain the IP address via DHCP server.
- Log in web interface of all bases, configure the new DM IP. By doing this, the rebuild of the system is finished.
- Log in web interface of DM, register the extra base, and set it as sync level 1.