



VLAN Feature on Yealink IP Phones



About VLAN

VLAN (Virtual Local Area Network) is used to logically divide a physical network into several broadcast domains. VLAN membership can be configured through software instead of physically relocating devices or connections. Grouping devices with a common set of requirements regardless of their physical location can greatly simplify network design. VLANs can address issues such as scalability, security, and network management.

IEEE 802.1Q

IEEE 802.1Q is the networking standard that supports VLANs on an Ethernet network. The specification defines a standard method for tagging Ethernet packets with VLAN membership information. A VLAN-aware device is the one which understands VLAN memberships and VLAN formats. When a packet from the phone enters the VLAN-aware portion of the network, a tag is added to represent the VLAN membership of the phone. Each packet must be distinguishable as being within exactly one VLAN. A packet in the VLAN-aware portion of the network that does not contain a VLAN tag is assumed to be flowing on the native (or default) VLAN.

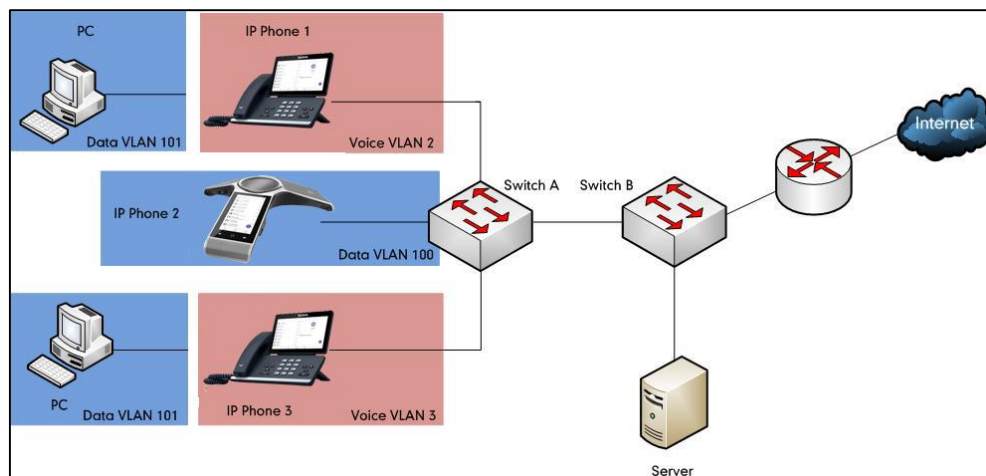
802.1Q adds a 4-byte tag between the source MAC address and the Ethernet type fields of the Ethernet frame. Two bytes are used for the tag protocol identifier (TPID), the other two bytes for tag control information (TCI). The TCI field is further divided into PCP (Priority Code Point), CFI (Canonical Format Indicator), and VID (VLAN ID).

Voice VLAN

As voice traffic is delay and jitter sensitive for the phone, it requires higher priority over data traffic to reduce delay and packet loss during transmission. To simplify configuration procedures and better manage voice transmission policies, the connected switch can be configured to provide voice VLAN function and transmit the voice traffic of the phone in a dedicated VLAN, called voice VLAN.

Voice VLAN is a special access port feature of the switch which allows phones to be automatically configured and easily associated with a logically separate VLAN. This feature provides various benefits, but one particular benefit is that when voice VLAN is enabled on a switch port, this port is also enabled to allow simultaneous access for a PC. This feature allows a PC to be daisy chained to a phone and the connection for both PC and phone to be trunked through the same physical Ethernet cable.

The purpose of VLAN configurations on the phone is to insert tag with VLAN information to the packets generated by the phone. When VLAN is properly configured for the ports (Internet port and PC port) on the phone, the phone will tag all packets from these ports with the VLAN ID. The switch receives and forwards the tagged packets to the corresponding VLAN according to the VLAN ID in the tags described in IEEE Std 802.3.



Major Benefits of Using VLANs

VLANs offer many benefits that are not found in typical LANs. Major benefits of segregating phones into VLAN(s) are listed as below:

- **Performance Enhancements:** VLAN is used to minimize the broadcast domain. Creating smaller domain for phone can reduce overhead and limit resource utilization. Additionally, less traffic will need to be routed, and the latency added by routers will be reduced.
- **Ease of Administration:** Much of the cost associated with network additions and relocations can be saved through the use of VLANs. phone can be shifted from one workgroup or department to another without installing new network cabling and reconfiguring hubs or routers.
- **Security:** VLANs can be used to create secure user groups and prevent others outside of the broadcast domain from receiving sensitive data of the phone. They can also be used to enhance firewall functions and restrict network access for one or more users. By segregating phones into VLANs, security filters can be implemented in the network to prevent the phones from receiving unnecessary traffic from other devices. This helps prevent disruption due to DoS attacks or attempts to compromise the devices. It also allows locking down access to configuration and signaling servers to only allow access from the phones.

Yealink Phones Compatible with VLAN Method

There are four ways to get VLAN ID for Internet (WAN) port, but the VLAN used is chosen by the priority of each method (from highest to lowest): LLDP/CDP>Manual>DHCP VLAN. There is only one way to get VLAN ID for PC port: Manual. The Manual method for PC port is not available on CP960 Teams IP Phones.

Note

LLDP and CDP methods have the same priority to get VLAN ID. Normally, the VLAN ID get for the phone by LLDP and CDP methods will be the same.

VLAN Discovery Method on Yealink Phones

Automatic Discovery Method for VLAN

LLDP

Introduction

LLDP (Link Layer Discovery Protocol) allows phones to receive and/or transmit device-related information to directly connected devices on the network that are also using the protocol, and store the information that is learned about other devices. Information gathered with LLDP is stored in the device as a management information database (MIB) and can be queried with the Simple Network Management Protocol (SNMP) as specified in RFC 2922. LLDP transmits information as packets called LLDP Data Units (LLDPDUs). An LLDPDU consists of a set of Type-Length-Value (TLV) elements, each of which contains a particular type of information about the device or port transmitting it.

Each of the TLV components has the following basic structure:

Type	Length	Value
7 bits	9 bits	0-511 octets

LLDP supports advertising the following TLVs:

- **Mandatory LLDP TLVs:** Chassis ID, Port ID, and Time to Live (TTL) are included in an LLDPDU by default.
- **Optional LLDP TLVs:** System Name, System Description and so on, the phone sends the optional TLVs along with the mandatory TLVs in an LLDPDU.
- **Organizationally Specific TLVs:** MAC/PHY Configuration/Status and Port VLAN ID, which are defined in IEEE Standard 802.3 and 802.1 respectively.

The LLDP frame ends with a special TLV, named **end of LLDPDU** in which both the **type** and **length** fields are 0.

LLDP-MED

LLDP-MED (Media Endpoint Discovery) is published by the Telecommunications Industry Association (TIA). It is an extension to LLDP that operates between endpoint devices and network connectivity devices. LLDP-MED specifically provides support for voice over IP (VoIP) applications and provides the following capabilities:

- Capabilities Discovery—allows LLDP-MED endpoints to determine the capabilities that the connected device supports and has enabled. It can be used to indicate whether the connected device is a phone, a switch, a repeater, etc.
- Voice VLAN Configuration—provides a mechanism for a switch to notify a device which VLAN to use, which enables “plug and play” networking.
- Power Management—provides information related to how the device is powered, power priority, and how much power the device needs.
- Inventory Management—provides a means to manage device and the attributes of the device such as model number, serial number, software revision, etc.
- Location Identification Discovery—provides location information from the switch to the device when placing an emergency call.

In addition to the TLVs advertised by LLDP, LLDP-MED also supports advertising the following TLVs:

- LLDP-MED capabilities TLV
- Network policy TLV
- Power management TLV
- Inventory management TLV
- Location identification TLV (not supported by phones)

It should be noted that either LLDP or LLDP-MED—but not both—can be used at any given time on an interface between two devices.

LLDP Feature on Yealink Phones

LLDP provides exceptional interoperability benefits, IP telephony troubleshooting, automatic deployment of policies and advanced PoE (Power over Ethernet). When LLDP feature is enabled on phones, the phones periodically advertise their own information to the directly connected LLDP-enabled switch. The phones can also receive LLDP packets from the connected switch. When the application type is “voice”, phones decide whether to update the VLAN configurations obtained from the LLDP packets. When the VLAN configurations on the phones are different from the ones sent by the switch, the phones perform an update and reboot. This allows the phones to be plugged into any switch, obtain their VLAN IDs, and then start communications with the call control.

Supported TLVs of Phones

TLVs supported by phones are summarized in the following table:

TLV Type	TLV Name	Description
Mandatory TLVs	Chassis ID	Specifies the IP address of the phone.
	Port ID	Specifies the MAC address of the phone.
	Time to Live	Specifies the lifetime of the transmitted information on the phone. The default value is 180s.
	End of LLDPDU	Marks the end of the TLV sequence in the LLDPDU. No further processing of TLVs after this is necessary. This is a mandatory TLV and therefore must be present at the end of the data stream.
Optional TLVs	System Name	Specifies the administratively-assigned name for the phone (per RFC3418). For more information, refer to Appendix B: System Names on page 1.
	System Description	Specifies the description of the phone.
	System Capabilities	Specifies the supported and enabled capabilities of the phone. The Telephone capability is supported and enabled by default.
	Port Description	Specifies the description of the sending port. The default value is "WAN PORT".
IEEE Std 802.3 Organizationally Specific TLV	MAC/PHY Configuration/Status	Specifies duplex and bit rate settings of the phone. The Auto-Negotiation is supported and enabled by default. The advertised capabilities of PMD Auto-Negotiation are: <ul style="list-style-type: none"> • 10BASE-T (half duplex mode) • 10BASE-T (full duplex mode) • 100BASE-TX (half duplex mode) • 100BASE-TX (full duplex mode) • 1000BASE-T (full duplex mode). Note: By default, all phones have the PMD Advertised Capability set for 10BASE-T and 100BASE-TX.

TLV Type	TLV Name	Description
		Yealink MP54/MP56/MP58/T58A/T56A/T55A/VP59 Teams phones that have Gigabit Ethernet support 1000BASE-T.
LLDP-MED TLVs	Media Capabilities	<p>Specifies the MED device type of the phone and the supported LLDP-MED TLV type can be encapsulated in LLDPDU.</p> <p>The supported LLDP-MED TLV types are:</p> <ul style="list-style-type: none"> • LLDP-MED Capabilities • Network Policy • Extended Power via MDI-PD • Inventory
	Network Policy	Specifies the port VLAN ID, application type, L2 priority and DSCP value.
	Extended Power-via-MDI	<p>Specifies power type, source, priority and value.</p> <p>For more information on power value, refer to Appendix D: Power Values on page 2.</p>
	Inventory – Hardware Revision	Specifies the hardware revision of phone.
	Inventory – Firmware Revision	Specifies the firmware revision of phone.
	Inventory – Software Revision	Specifies the software revision of phone.
	Inventory – Serial Number	Specifies the serial number of phone.
	Inventory – Manufacturer Name	<p>Manufacturer name of phone.</p> <p>The default value is “Yealink”.</p>
	Inventory – Model Name	<p>Specifies the model name of phone.</p> <p>For more information, refer to Appendix C: Model Names on page 2.</p>
	Asset ID	Specifies the asset identifier of phone.

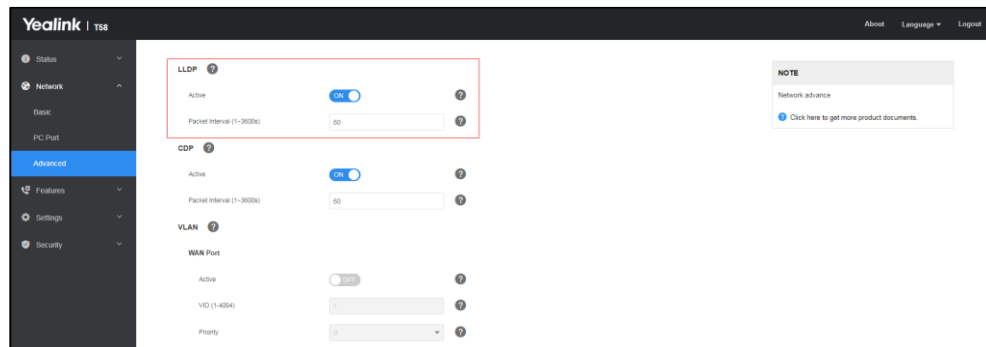
Configuring LLDP Feature

LLDP is enabled on phones by default. You can configure LLDP via web user interface or using configuration files. You can also configure the sending frequency of LLDP packet. The default sending frequency is 60s.

The followings take configurations of a T58A Teams IP phone as examples.

To configure LLDP feature via web user interface:

1. Log into the web user interface with the administrator credential.
The default administrator user name and password are both “admin”.
2. Click on **Network->Advanced**.
3. In the **LLDP** block, turn on the LLDP feature.
4. Enter the desired time (in seconds) in the **Packet Interval (1~3600s)** field.



5. Click **Confirm** to accept the change.
The web user interface prompts the warning “Some settings you changed take effect when you restart your machine! Do you want to reboot now?”.
6. Click **OK** to reboot the phone.

To configure LLDP feature using configuration files:

1. Add/Edit LLDP parameters in configuration files.

The following table shows the information of parameters:

Parameters	Permitted Values	Default
static.network.lldp.enable	0 or 1	1
Description: Enables or disables LLDP on the phone. 0-Disabled 1-Enabled		
static.network.lldp.packet_interval	Integer from 1 to 3600	60

Parameters	Permitted Values	Default
Description: Configures the interval (in seconds) for the phone to send the LLDP request.		

The following shows an example of LLDP configuration in configuration files:

```
static.network.lldp.enable = 1
```

```
static.network.lldp.packet_interval = 60
```

- Upload configuration files to the root directory of the provisioning server and trigger phones to perform an auto provisioning for configuration update.

For more information on auto provisioning, refer to

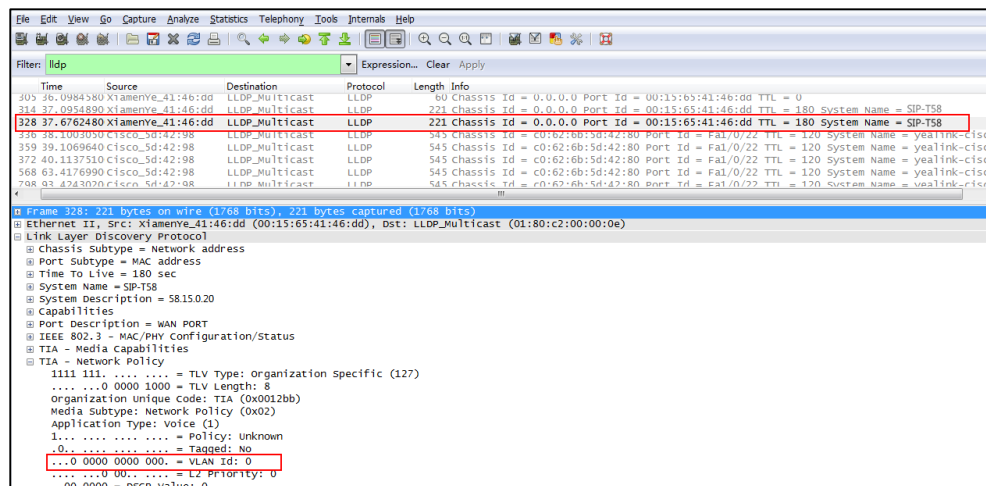
[Yealink_Teams_HD_IP_Phones_Auto_Provisioning_Guide](#).

Verifying the Configuration

After LLDP feature is enabled, the phone performs the following:

- Periodically advertises information (e.g., hardware revision, firmware revision, serial number) of the phone to a multicast address on the network.
- Allows LLDP packets to be received from the Internet (WAN) port or WLAN port.
- Supports the MAC/PHY configuration (e.g., speed rate, duplex mode).
- Obtains VLAN info from the network policy, which takes precedence over manual settings.

The following figure shows the LLDP packet sent by the phone, the packet contains multiple TLVs (before obtaining VLAN ID).



The following figure shows the LLDP packet received by the phone, the packet contains multiple TLVs (sent by the switch).

No.	Time	Source	Destination	Protocol	Length	Info
568	62.4176990	Cisco_Sd:42:98	LLDP_Multicast	LLDP	545	Chassis Id = c0:62:6b:5d:42:80 Port Id = Fa1/0/22 TTL = 120 System Name = yealink-cisco
798	93.4243020	Cisco_Sd:42:98	LLDP_Multicast	LLDP	545	Chassis Id = c0:62:6b:5d:42:80 Port Id = Fa1/0/22 TTL = 120 System Name = yealink-cisco
845	97.4168990	Xiamenye_41:46:dd	LLDP_Multicast	LLDP	221	Chassis Id = 10.10.222.19 Port Id = 00:15:65:41:46:dd TTL = 180 System Name = SIP-TS8
1125	123.380655	Cisco_Sd:42:98	LLDP_Multicast	LLDP	545	Chassis Id = c0:62:6b:5d:42:80 Port Id = Fa1/0/22 TTL = 120 System Name = yealink-cisco

Link Layer Discovery Protocol

- Chassis Subtype = MAC address, Id: c0:62:6b:5d:42:80
- Port Subtype = Interface name, Id: Fa1/0/22
- Time To Live = 120 sec
- System Name = yealink-cisco3750.yealink.com
- [truncated] System Description = Cisco IOS Software, C3750 Software (C3750-IPSERVICESK9-M), Version 12.2(55)SE6, RELEASE SOFTWARE (fc1)\ntechinal Support
- Port Description = FastEthernet1/0/22
- Capabilities
- Management Address
- TIA - Media Capabilities
- TIA - Inventory - Hardware Revision
- TIA - Inventory - Software Revision
- TIA - Inventory - Manufacturer Name
- TIA - Inventory - Model Name
- TIA - Network Policy
 - 1111 1111... = TLV Type: organization specific (127)
 - 0000 1000 = TLV Length: 8
 - Organization unique Code: TIA (0x0012bb)
 - Media Subtype: Network Policy (0x02)
 - Application Type: Voice (1)
 - 0... .. = Policy: Defined
 - 1... .. = Tagged: Yes
 - ...0 0001 1011 110. = VLAN Id: 222
 - 1011 01... = L2 Priority: 5
 - ..10 1110 = DSCP value: 46

The following figure shows the LLDP packet sent by the phone, the packet contains multiple TLVs (after obtaining VLAN ID).

No.	Time	Source	Destination	Protocol	Length	Info
328	37.6762480	Xiamenye_41:46:dd	LLDP_Multicast	LLDP	221	Chassis Id = 0.0.0.0 Port Id = 00:15:65:41:46:dd TTL = 180 System Name = SIP-TS8
336	38.1003050	Cisco_Sd:42:98	LLDP_Multicast	LLDP	545	Chassis Id = c0:62:6b:5d:42:80 Port Id = Fa1/0/22 TTL = 120 System Name = yealink-cisco
359	39.1069640	Cisco_Sd:42:98	LLDP_Multicast	LLDP	545	Chassis Id = c0:62:6b:5d:42:80 Port Id = Fa1/0/22 TTL = 120 System Name = yealink-cisco
372	40.1137510	Cisco_Sd:42:98	LLDP_Multicast	LLDP	545	Chassis Id = c0:62:6b:5d:42:80 Port Id = Fa1/0/22 TTL = 120 System Name = yealink-cisco
568	63.4176990	Cisco_Sd:42:98	LLDP_Multicast	LLDP	545	Chassis Id = c0:62:6b:5d:42:80 Port Id = Fa1/0/22 TTL = 120 System Name = yealink-cisco
798	93.4243020	Cisco_Sd:42:98	LLDP_Multicast	LLDP	545	Chassis Id = c0:62:6b:5d:42:80 Port Id = Fa1/0/22 TTL = 120 System Name = yealink-cisco
845	97.4168990	Xiamenye_41:46:dd	LLDP_Multicast	LLDP	221	Chassis Id = 10.10.222.19 Port Id = 00:15:65:41:46:dd TTL = 180 System Name = SIP-TS8

Frame 845: 221 bytes on wire (1768 bits), 221 bytes captured (1768 bits) on Ethernet II, Src: Xiamenye_41:46:dd (00:15:65:41:46:dd), Dst: LLDP_Multicast (01:80:c2:00:00:0e)

Link Layer Discovery Protocol

- Chassis Subtype = Network address
- Port Subtype = MAC address
- Time To Live = 180 sec
- System Name = SIP-TS8
- System Description = S815.020
- Capabilities
- Port Description = WAN PORT
- IEEE 802.3 - MAC/PHY Configuration/Status
- TIA - Media Capabilities
- TIA - Network Policy
 - 1111 1111... = TLV Type: organization specific (127)
 - 0000 1000 = TLV Length: 8
 - Organization unique Code: TIA (0x0012bb)
 - Media Subtype: Network Policy (0x02)
 - Application Type: Voice (1)
 - 0... .. = Policy: Defined
 - 1... .. = Tagged: Yes
 - ...0 0001 1011 110. = VLAN Id: 222
 - 1011 01... = L2 Priority: 5
 - ..10 1110 = DSCP value: 46

CDP

Introduction

CDP (Cisco Discovery Protocol) allows phones to receive and/or transmit device-related information from/to directly connected devices on the network that are also using the protocol, and store the information about other devices.

CDP Feature on Yealink Phones

When CDP feature is enabled on phones, the phones periodically advertise their own information to the directly connected CDP-enabled switch. The phones can also receive CDP packets from the connected switch. When the VLAN configurations on the phones are different from the ones sent by the switch, the phones perform an update and reboot. This allows the

phones to be plugged into any switch, obtain their VLAN IDs, and then start communications with the call control.

Configuring CDP Feature

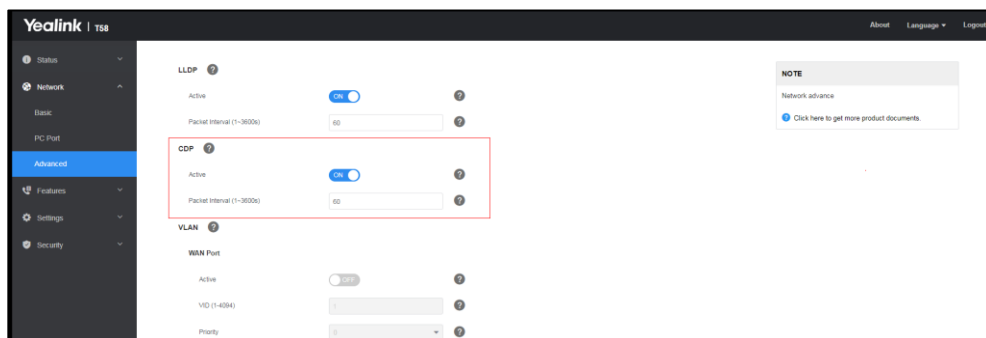
CDP is disabled on phones by default. You can configure CDP via web user interface or using configuration files. You can also configure the sending frequency of CDP packet. The default sending frequency is 60s.

Configuring CDP via Web User Interface

The followings take configurations of a T58A Teams phone as examples.

To configure CDP feature via web user interface:

1. Log into the web user interface with the administrator credential.
The default administrator user name and password are both “admin”.
2. Click on **Network->Advanced**.
3. In the **CDP** block, turn on the CDP feature.
4. Enter the desired time (in seconds) in the **Packet Interval (1~3600s)** field.



5. Click **Confirm** to accept the change.

The web user interface prompts the warning “Some settings you changed take effect when you restart your machine! Do you want to reboot now?”.

6. Click **OK** to reboot the phone.

To configure CDP feature using configuration files:

1. Add/Edit CDP parameters in configuration files.

The following table shows the information of parameters:

Parameters	Permitted Values	Default
static.network.cdp.enable	0 or 1	0
Description: Enables or disables CDP on the phone.		

Parameters	Permitted Values	Default
0-Disabled 1-Enabled		
static.network.cdp.packet_interval	Integer from 1 to 3600	60
Description: Configures the interval (in seconds) for the phone to send the CDP request.		

The following shows an example of CDP configuration in configuration files:

```
static.network.cdp.enable = 1
```

```
static.network.cdp.packet_interval = 60
```

- Upload configuration files to the root directory of the provisioning server and trigger phones to perform an auto provisioning for configuration update.

For more information on auto provisioning, refer to

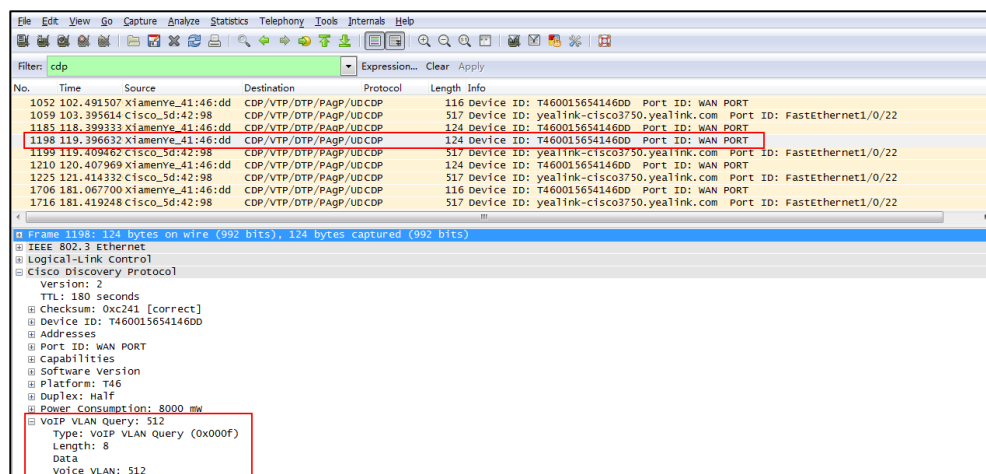
[Yalink_Teams_HD_IP_Phones_Auto_Provisioning_Guide](#).

Verifying the Configuration

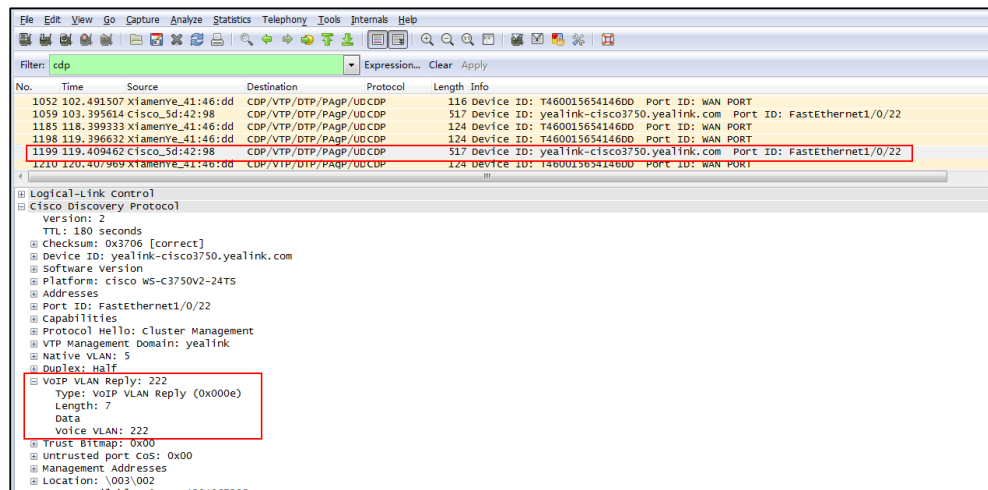
After CDP feature is enabled, the phone performs the following:

- Periodically advertises information (e.g., software revision, device ID, power consumption) of the phone to a multicast address on the network.
- Allows CDP packets to be received from the Internet (WAN) port or WLAN port.
- Obtains VLAN ID of connecting ports.

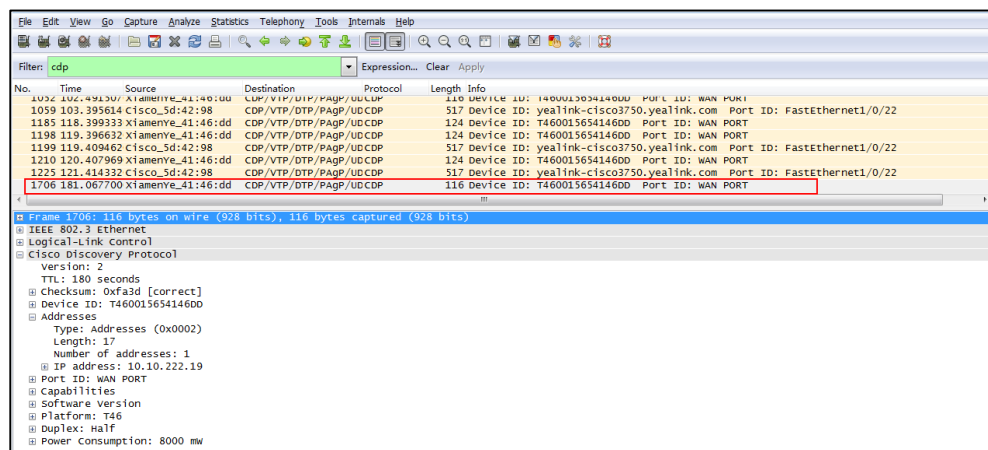
The following figure shows the CDP packet sent by the phone (before obtaining VLAN ID-with VLAN Query field).



The following figure shows the CDP packet received by the phone (with VLAN Reply field).



The following figure shows the CDP packet sent by the phone (after obtaining VLAN ID-without VLAN Query field).



DHCP VLAN

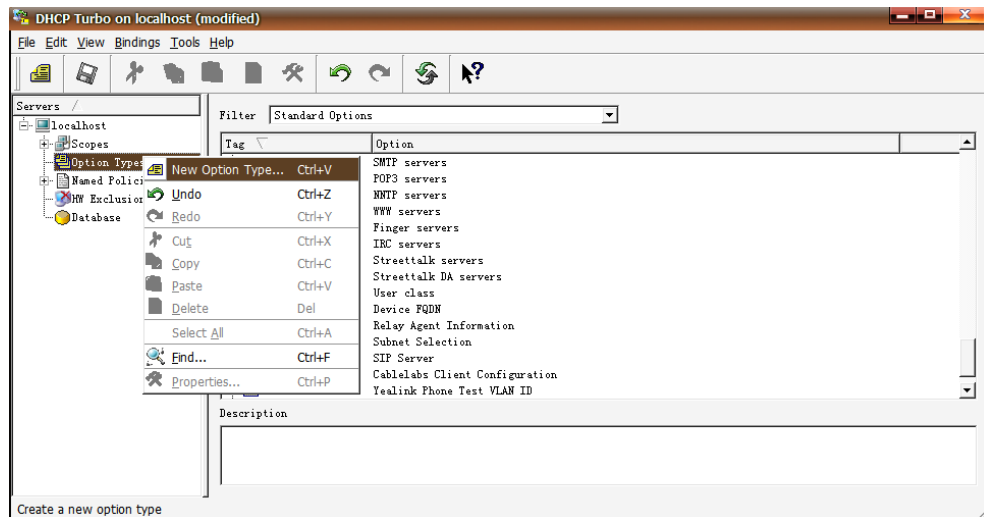
Phones support VLAN discovery via DHCP. When the VLAN Discovery method is set to DHCP, the phone will detect DHCP option for a valid VLAN ID. The predefined option 132 is used to supply the VLAN ID by default. You can customize the DHCP option used to detect the VLAN ID.

Configuring DHCP Option on a DHCP Server

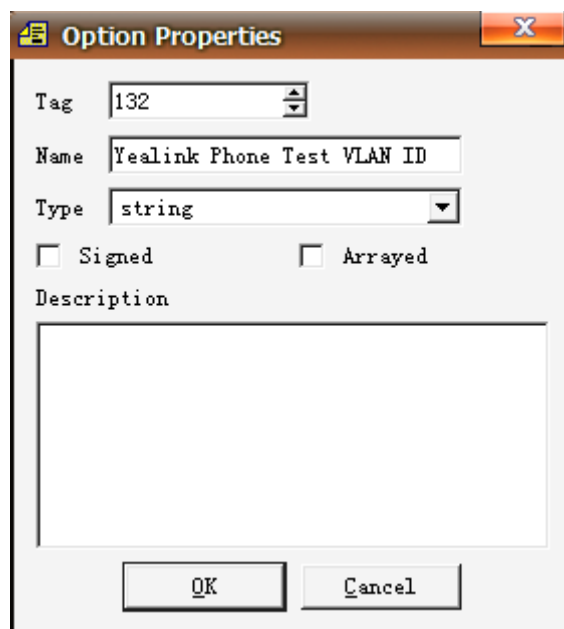
Before using DHCP VLAN feature on phones, you must make sure that the DHCP option on the DHCP server is configured properly. This section provides instructions on how to configure a DHCP option for windows using DHCP Turbo.


To configure DHCP option on a DHCP server:

1. Start the DHCP Turbo application.
2. Right click **Option Types**, and then select **New Option Type**.

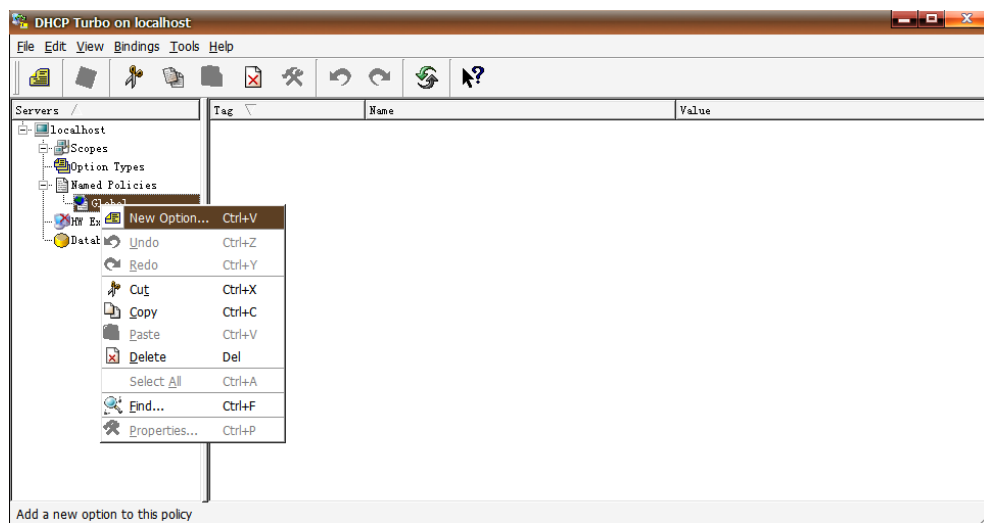


3. Enter the desired option in the **Tag** field.
The custom options range from 128 to 254.
4. Enter the desired name in the **Name** field.
5. Select **string** from the pull-down list of **Type**.

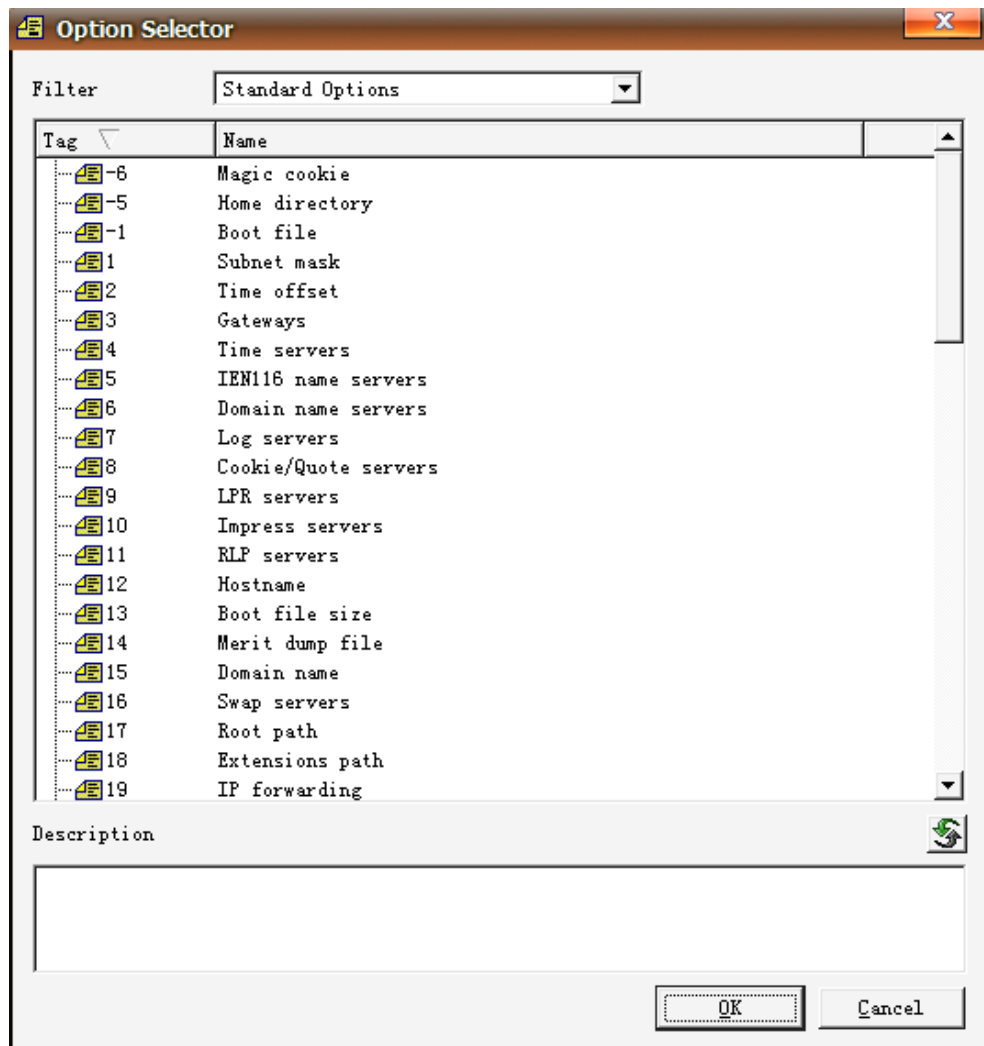


6. Click **OK** to finish setting the option properties.
7. Click  to accept the change.
8. Double click **Named Policies**.

9. Right click **Global**, and then select **New Option**.

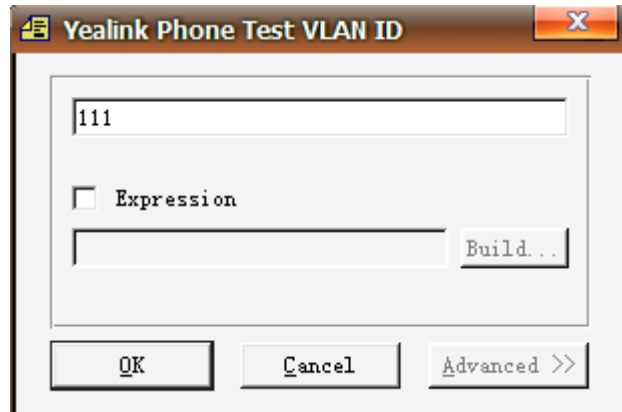


The Option Selector screen displays as below:




10. Scroll down and double click the option created above.
11. Fill the VLAN ID to be assigned in the input field.

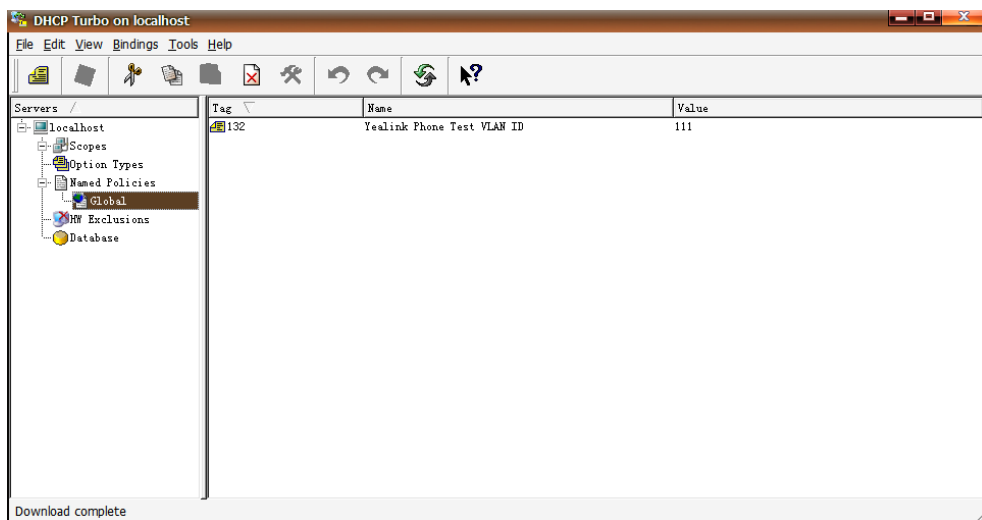
Three formats of valid values: VLAN-A= *VLAN/ID*, *VLAN/ID* and *VID= VLAN/ID*. VLAN ID ranges from 1 to 4094.



12. Click **OK** to finish setting a custom option.

13. Click  to accept the change.

Then you can find the configured option under **Global** option.



Configuring DHCP Option on Yealink Phones

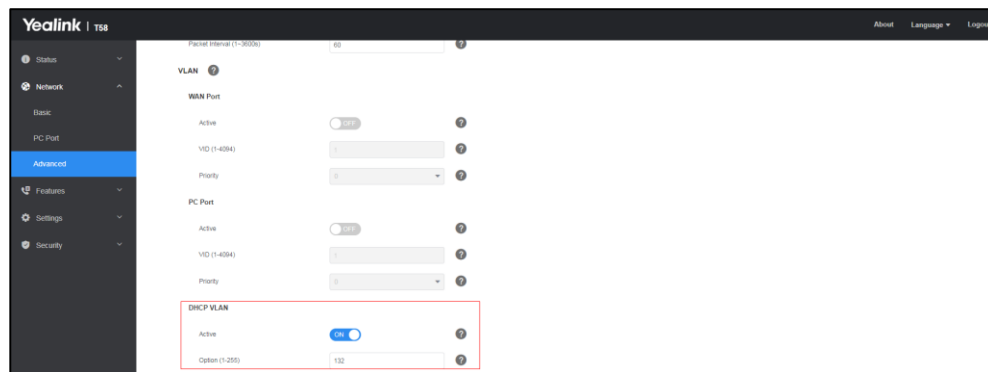
DHCP VLAN is enabled on phones by default. You can configure DHCP VLAN via web user interface or using configuration files. You can also configure the DHCP option. The default DHCP option is 132.

The followings take configurations of a T58A Teams phone as examples.

To configure DHCP VLAN feature via web user interface:

1. Log into the web user interface with the administrator credential.
The default administrator user name and password are both "admin".
2. Click on **Network->Advanced**.
3. In the **VLAN** block, turn on the DHCP VLAN feature.
4. Enter the desired value in the **Option** field.

You can specify 5 options at most and separate options by commas. The default value is 132.



- Click **Confirm** to accept the change.

The web user interface prompts the warning “Some settings you changed take effect when you restart your machine! Do you want to reboot now?”.

- Click **OK** to reboot the phone.

To configure DHCP VLAN feature using configuration files:

- Add/Edit DHCP VLAN parameters in configuration files.

The following table shows the information of parameters:

Parameters	Permitted Values	Default
static.network.vlan.dhcp_enable	0 or 1	1
Description: Enables or disables DHCP VLAN discovery feature on the phone. 0-Disabled 1-Enabled		
static.network.vlan.dhcp_option	Integer from 128 to 254	132
Description: Specifies the DHCP option used to detect the VLAN ID. You can specify 5 options at most and separate options by commas.		

The following shows an example of DHCP VLAN configuration in configuration files:

```
static.network.vlan.dhcp_enable = 1
static.network.vlan.dhcp_option = 132
```

- Upload configuration files to the root directory of the provisioning server and trigger phones to perform an auto provisioning for configuration update.

For more information on auto provisioning, refer to [Yealink Teams HD IP Phones Auto](#)

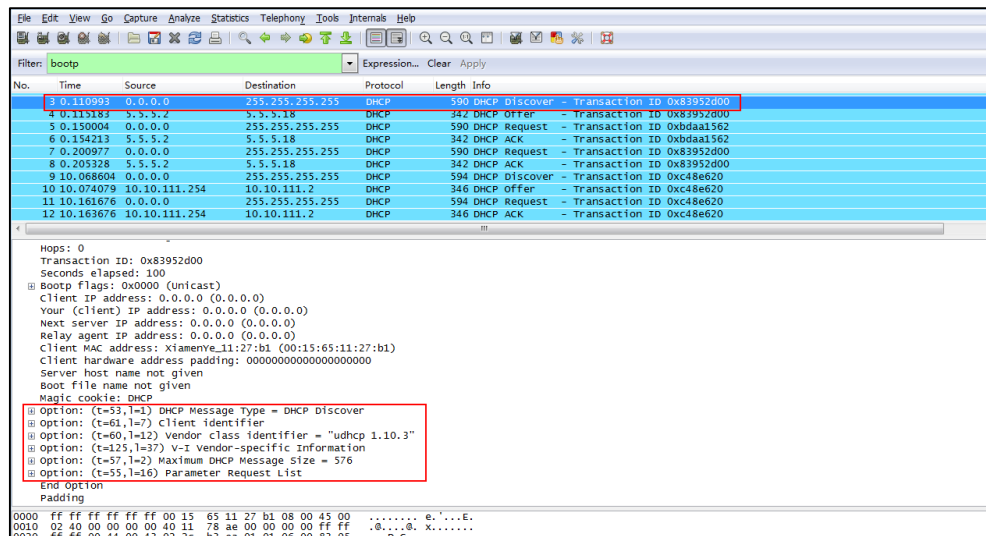
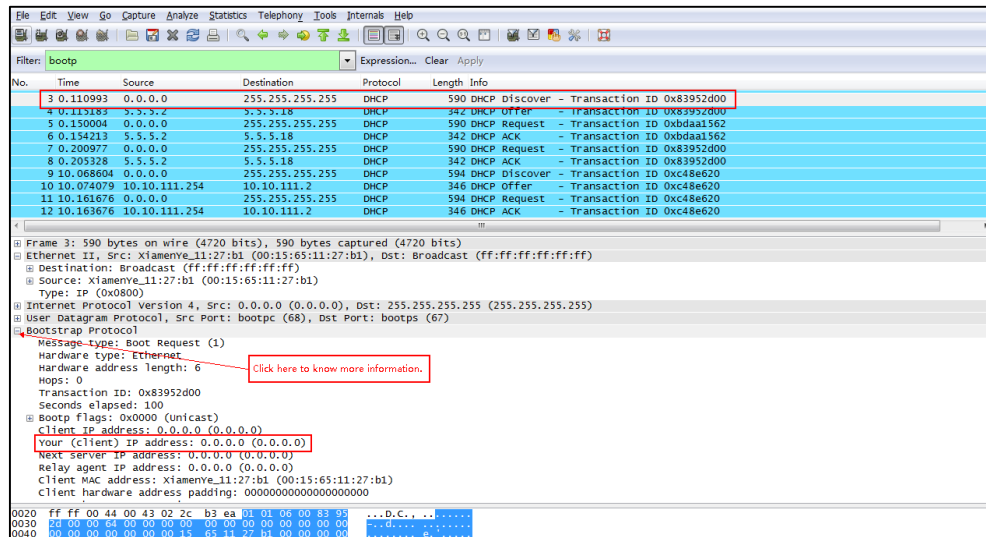
*Provisioning Guide.***Verifying the Configuration**

When the phone is configured to use DHCP for VLAN discovery, and the DHCP option is set to 132, the following processes occur:

1. The phone broadcasts a DHCP Discover message to find out if there is a DHCP server available.
2. If the DHCP server sends a DHCP Offer message with the Option 132, the phone will accept the Offer, send a DHCP Request, and save the VLAN ID provided by the DHCP server in the DHCP option 132.
3. After obtaining the VLAN ID from DHCP server, the phone will release the leased IP address and start a new DHCP Discover cycle with the now known Voice VLAN ID tag.

After this process, the phone will send all packets with the VLAN ID obtained from the DHCP server in the DHCP option 132.

The following figure shows the DHCP Discover message sent by the phone (before obtaining VLAN ID):



The following figure shows the DHCP Offer message received by the phone (DHCP server sends a DHCP Offer message with the Option 132):

No.	Time	Source	Destination	Protocol	Length	Info
3	0.110993	0.0.0.0	255.255.255.255	DHCP	590	DHCP Discover - Transaction ID 0x83952d00
4	0.115183	5.5.5.2	5.5.5.18	DHCP	342	DHCP Offer - Transaction ID 0x83952d00
5	0.150004	0.0.0.0	255.255.255.255	DHCP	590	DHCP Request - Transaction ID 0xbdaa1562
6	0.154213	5.5.5.2	5.5.5.18	DHCP	342	DHCP ACK - Transaction ID 0xbdaa1562
7	0.200977	0.0.0.0	255.255.255.255	DHCP	590	DHCP Request - Transaction ID 0x83952d00
8	0.205328	5.5.5.2	5.5.5.18	DHCP	342	DHCP ACK - Transaction ID 0x83952d00
9	10.068604	0.0.0.0	255.255.255.255	DHCP	594	DHCP Discover - Transaction ID 0xc48e620
10	10.074079	10.10.111.254	10.10.111.2	DHCP	346	DHCP Offer - Transaction ID 0xc48e620
11	10.161676	0.0.0.0	255.255.255.255	DHCP	594	DHCP Request - Transaction ID 0xc48e620
12	10.163676	10.10.111.254	10.10.111.2	DHCP	346	DHCP ACK - Transaction ID 0xc48e620

Client IP address: 0.0.0.0 (0.0.0.0)
 Your (client) IP address: 5.5.5.18 (5.5.5.18)
 Next server IP address: 5.5.5.2 (5.5.5.2)
 Relay agent IP address: 0.0.0.0 (0.0.0.0)
 Client MAC address: xiamenve_11:27:b1 (00:15:65:11:27:b1)
 Client hardware address padding: 00000000000000000000
 Server host name: mid0507-dc2a398
 Boot file name not given
 Magic cookie: DHCP
 Option: (t=53,l=1) DHCP Message Type = DHCP Offer
 Option: (t=1,l=4) Subnet Mask = 255.255.255.0
 Option: (t=51,l=4) IP Address Lease Time = 6 hours
 Option: (t=59,l=4) Rebinding Time value = 5 hours, 15 minutes
 Option: (t=58,l=4) Renewal Time value = 3 hours
 Option: (t=3,l=4) Router = 5.5.5.1
 Option: (t=132,l=3) PXE - undefined (vendor specific)
 Option: (t=222,l=1) unassigned
 Option: (t=128,l=5) DOCSIS full security server IP [T000]
 Option: (t=54,l=4) DHCP Server Identifier = 5.5.5.2
 End Option
 Padding

The following figure shows the DHCP message received by the phone (DHCP server sent the ACK message to the phone):

No.	Time	Source	Destination	Protocol	Length	Info
3	0.110993	0.0.0.0	255.255.255.255	DHCP	590	DHCP Discover - Transaction ID 0x83952d00
4	0.115183	5.5.5.2	5.5.5.18	DHCP	342	DHCP Offer - Transaction ID 0x83952d00
5	0.150004	0.0.0.0	255.255.255.255	DHCP	590	DHCP Request - Transaction ID 0xbdaa1562
6	0.154213	5.5.5.2	5.5.5.18	DHCP	342	DHCP ACK - Transaction ID 0xbdaa1562
7	0.200977	0.0.0.0	255.255.255.255	DHCP	590	DHCP Request - Transaction ID 0x83952d00
8	0.205328	5.5.5.2	5.5.5.18	DHCP	342	DHCP ACK - Transaction ID 0x83952d00
9	10.068604	0.0.0.0	255.255.255.255	DHCP	594	DHCP Discover - Transaction ID 0xc48e620
10	10.074079	10.10.111.254	10.10.111.2	DHCP	346	DHCP Offer - Transaction ID 0xc48e620
11	10.161676	0.0.0.0	255.255.255.255	DHCP	594	DHCP Request - Transaction ID 0xc48e620
12	10.163676	10.10.111.254	10.10.111.2	DHCP	346	DHCP ACK - Transaction ID 0xc48e620

Client IP address: 0.0.0.0 (0.0.0.0)
 Your (client) IP address: 5.5.5.18 (5.5.5.18)
 Next server IP address: 5.5.5.2 (5.5.5.2)
 Relay agent IP address: 0.0.0.0 (0.0.0.0)
 Client MAC address: xiamenve_11:27:b1 (00:15:65:11:27:b1)
 Client hardware address padding: 00000000000000000000
 Server host name: mid0507-dc2a398
 Boot file name not given
 Magic cookie: DHCP
 Option: (t=53,l=1) DHCP Message Type = DHCP ACK
 Option: (t=1,l=4) Subnet Mask = 255.255.255.0
 Option: (t=51,l=4) IP Address Lease Time = 6 hours
 Option: (t=59,l=4) Rebinding Time value = 5 hours, 15 minutes
 Option: (t=58,l=4) Renewal Time value = 3 hours
 Option: (t=3,l=4) Router = 5.5.5.1
 Option: (t=132,l=3) PXE - undefined (vendor specific)
 Option: (t=222,l=1) unassigned
 Option: (t=128,l=5) DOCSIS full security server IP [T000]
 Option: (t=54,l=4) DHCP Server Identifier = 5.5.5.2
 End Option
 Padding

After obtaining the VLAN ID from DHCP server, phone will release the leased IP address (5.5.5.18) and start a new DHCP Discover message with the VLAN-tag 111.

The following figure shows the DHCP messages received by the phone:

No.	Time	Source	Destination	Protocol	Length	Info
3	0.110993	0.0.0.0	255.255.255.255	DHCP	590	DHCP Discover - Transaction ID 0x83952d00
4	0.115183	5.5.5.2	5.5.5.18	DHCP	342	DHCP Offer - Transaction ID 0x83952d00
5	0.150004	0.0.0.0	255.255.255.255	DHCP	590	DHCP Request - Transaction ID 0xbdaa1562
6	0.154213	5.5.5.2	5.5.5.18	DHCP	342	DHCP ACK - Transaction ID 0xbdaa1562
7	0.200977	0.0.0.0	255.255.255.255	DHCP	590	DHCP Request - Transaction ID 0x83952d00
8	0.205328	5.5.5.2	5.5.5.18	DHCP	342	DHCP ACK - Transaction ID 0x83952d00
9	10.068604	0.0.0.0	255.255.255.255	DHCP	594	DHCP Discover - Transaction ID 0xc48e620
10	10.074079	10.10.111.254	10.10.111.2	DHCP	346	DHCP Offer - Transaction ID 0xc48e620
11	10.161676	0.0.0.0	255.255.255.255	DHCP	594	DHCP Request - Transaction ID 0xc48e620
12	10.163676	10.10.111.254	10.10.111.2	DHCP	346	DHCP ACK - Transaction ID 0xc48e620

Packet 12 details:

- Ethernet II (VLAN tagged), Src: Cisco_5d:42:c4 (c0:62:6b:5d:42:c4), Dst: Xiamenye_11:27:b1 (00:15:65:11:27:b1)
 - Destination: Xiamenye_11:27:b1 (00:15:65:11:27:b1)
 - Source: Cisco_5d:42:c4 (c0:62:6b:5d:42:c4)
 - VLAN tag: VLAN=111, Priority=Best Effort (default)
 - Identifier: 802.1Q Virtual LAN (0x8100)
 - 000, = Priority: Best Effort (default) (0)
 - 0000 0110 1111 = VLAN: 111
 - Type: IP (0x0800)
- Internet Protocol Version 4, Src: 10.10.111.254 (10.10.111.254), Dst: 10.10.111.2 (10.10.111.2)
 - User Datagram Protocol, Src Port: bootps (67), Dst Port: bootpc (68)
 - Bootstrap Protocol
 - Message type: Boot Reply (2)
 - Hardware type: Ethernet
 - Hardware address length: 6
 - Hops: 0
 - Transaction ID: 0xc48e620
 - Seconds elapsed: 0
 - Bootp flags: 0x0000 (unicast)
 - Client IP address: 0.0.0.0 (0.0.0.0)
 - Your (Client) IP address: 10.10.111.2 (10.10.111.2)

After this process, the phone has obtained an IP address (10.10.111.2) from the DHCP server in the VLAN 111.

Manual Configuration for VLAN

VLAN is disabled on phones by default. You can configure VLAN via web user interface or phone user interface or using configuration files. Before configuring VLAN on the phone, you need to obtain the VLAN ID from your network administrator. When you configure VLAN feature, the most important issue is to confirm the type of the connected port (access, trunk, and hybrid) on the switch. This ensures that the traffics (tagged/untagged) from the phones can be transmitted properly. VLAN feature could affect the ability of the phones to function in the network. Contact your network administrator for more information before configuration.

Configuring VLAN Feature

You can enable or disable VLAN, and set specific VLAN IDs and priorities for the Internet (WAN) port and PC port respectively. PC port is not applicable on CP960 Teams IP phones.

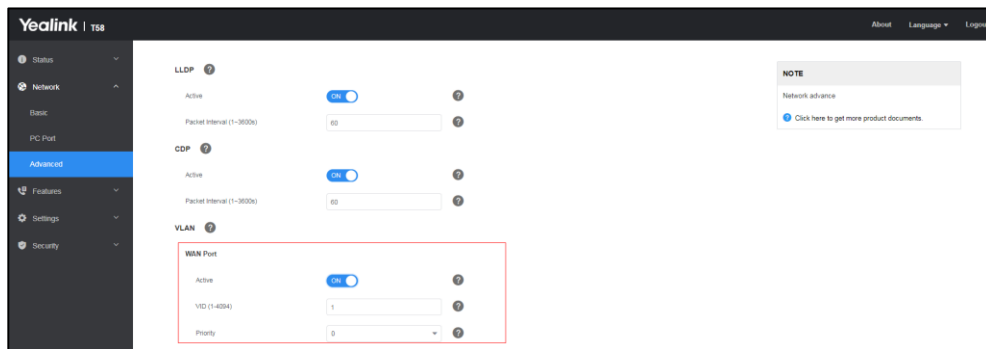
The followings take configurations of a T58A Teams IP phone as examples.

Configuring VLAN Feature via Web User Interface

To configure VLAN for Internet port via web user interface:

1. Click on **Network->Advanced**.
2. In the **VLAN** block, turn on **WAN Port** feature.
3. Enter the VLAN ID in the **VID (1-4094)** field.

4. Select the desired value (0-7) from the pull-down list of **Priority**.



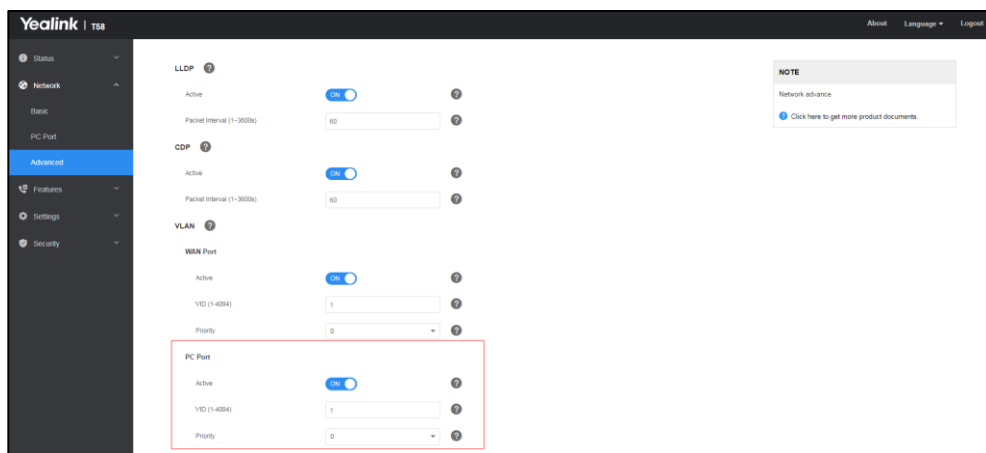
5. Click **Confirm** to accept the change.

A dialog box pops up to prompt that the settings will take effect after a reboot.

6. Click **OK** to reboot the phone.

To configure VLAN for PC port via web user interface:

1. Click on **Network->Advanced**.
2. In the **PC Port** block, select the desired value from the pull-down list of **Active**.
3. Enter the VLAN ID in the **VID (1-4094)** field.
4. Select the desired value (0-7) from the pull-down list of **Priority**.




5. Click **Confirm** to accept the change.

A dialog box pops up to prompt that the settings will take effect after a reboot.

6. Click **OK** to reboot the phone.


To configure VLAN for Internet port (or PC port) via phone user interface:

1. Tap  -> **Settings->Device Settings->Network**(default password: admin)->**VLAN->WAN Port** (or **PC Port**).

2. Turn on **WAN Port** (or **PC Port**).

A dialog box pops up to prompt that the settings will take effect after a reboot.

3. Tap **CANCEL**.

4. Enter the VLAN ID (1-4094) in the **VID** field.
5. Enter the priority value (0-7) in the **Priority** field.
6. Tap  to accept the change.

A dialog box pops up to prompt that the settings will take effect after a reboot.

7. Tap **OK** to reboot the phone.

Configuring VLAN Feature Using Configuration Files

To configure VLAN for Internet (WAN) port and PC port using configuration file:

1. Add/Edit VLAN for Internet (WAN) port and PC port parameters in configuration files.

The following table shows the information of parameters:

Parameters	Permitted Values	Default
static.network.vlan.internet_port_enable	0 or 1	0
Description: Enables or disables the phone to tag VLAN ID in packets sent from the Internet (WAN) port. 0 -Disabled 1 -Enabled		
static.network.vlan.internet_port_vid	Integer from 1 to 4094	1
Description: Configures the VLAN ID that associates with the particular VLAN.		
static.network.vlan.internet_port_priority	Integer from 0 to 7	0
Description: Specifies the priority used for transmitting VLAN packets.		
static.network.vlan.pc_port_enable	0 or 1	0
Description: Enables or disables the phone to tag VLAN ID in packets sent from the PC port. Note: It is not applicable on CP960 Teams IP phones. 0 -Disabled 1 -Enabled		
static.network.vlan.pc_port_vid	Integer from 1 to 4094	1

Parameters	Permitted Values	Default
Description: Configures the VLAN ID that associates with the particular VLAN. Note: It is not applicable on CP960 Teams IP phones.		
static.network.vlan.pc_port_priority	Integer from 0 to 7	0
Description: Specifies the priority used for transmitting VLAN packets.		

The following shows an example of VLAN configuration in configuration files:

```
static.network.vlan.internet_port_enable = 1
static.network.vlan.internet_port_vid = 77
static.network.vlan.internet_port_priority = 5
static.network.vlan.pc_port_enable = 1
static.network.vlan.pc_port_vid = 76
static.network.vlan.pc_port_priority = 3
```

- Upload configuration files to the root directory of the provisioning server and trigger phones to perform an auto provisioning for configuration update.

For more information on auto provisioning, refer to

[Yealink_Teams_HD_IP_Phones_Auto_Provisioning_Guide](#).

Verifying the Configuration

The phone reboots after VLAN feature has been enabled. After starting up, the phone will be assigned with a subnet address defined for VLAN 77.

The following figure shows the VLAN ID sent and received by the phone:

No.	Time	Source	Destination	Protocol	Info
11	2.449322	10.2.11.216	10.2.1.199	SIP/SDP	Request: INVITE sip:201@10.2.1.199, with session description
12	2.451191	10.2.1.199	10.2.11.216	SIP	Status: 100 Trying
13	2.452890	10.2.1.199	10.2.8.216	SIP/SDP	Request: INVITE sip:201@10.2.8.216:5062, with session description
14	2.489378	10.2.8.216	10.2.1.199	SIP	Status: 100 Trying
17	3.649007	10.2.8.216	10.2.1.199	SIP	Status: 180 Ringing
18	3.651856	10.2.1.199	10.2.11.216	SIP	Status: 180 Ringing
20	4.411930	10.2.8.216	10.2.1.199	SIP/SDP	Status: 200 OK, with session description
21	4.415661	10.2.1.199	10.2.11.216	SIP/SDP	Status: 200 OK, with session description
22	4.496396	10.2.11.216	10.2.8.216	SIP	Request: ACK sip:201@10.2.8.216:5062
23	4.496749	10.2.11.216	10.2.8.216	SIP	Request: ACK sip:201@10.2.8.216:5062

Frame 11: 908 bytes on wire (7264 bits), 908 bytes captured (7264 bits)	
Ethernet II, Src: XiamenYe_12:22:f9 (00:15:65:12:22:f9), Dst: Cisc0_40:da:55 (6c:50:4d:40:da:55)	
802.1Q Virtual LAN, PRI: 3, CFI: 0, ID: 77	
011. = Priority: Excellent Effort (3)	
...0 = CFI: Canonical (0)	
... 0000 0100 1101 = ID: 77	
Type: IP (0x0800)	
Internet Protocol, Src: 10.2.11.216 (10.2.11.216), Dst: 10.2.1.199 (10.2.1.199)	
User Datagram Protocol, Src Port: na-localise (5062), Dst Port: sip (5060)	
Session Initiation Protocol	

Appendix

Appendix A: Glossary

IEEE (Institute of Electrical and Electronics Engineers) –a professional association headquartered in New York City that is dedicated to advancing technological innovation and excellence.

TIA (Telecommunications Industry Association) –accredited by the American National Standards Institute (ANSI) to develop voluntary, consensus-based industry standards for a wide variety of ICT products.

IEEE 802.3 –a working group and a collection of IEEE standards produced by the working group defining the physical layer and data link layer's media access control (MAC) of wired Ethernet.

Port-based VLAN –a port-based VLAN is a group of ports on a Gigabit Ethernet Switch that form a logical Ethernet segment. Each port of a port-based VLAN can belong to only one VLAN at a time.

Port and Protocol-based VLAN –initially defined in IEEE 802.1v (currently amended as part of 802.1Q-2003) enables data frame classification and assignment to unique VLANs based on the received data frame type and the protocol information in its payload.

TPID (tag protocol identifier) –a 16-bit field set to a value of 0x8100 in order to identify the frame as an IEEE 802.1Q-tagged frame. It is used to distinguish the frame from untagged frames.

PCP (Priority Code Point) –a 3-bit field which refers to the IEEE 802.1p priority. It indicates the frame priority level. Values are from 0 (best effort) to 7 (highest); 1 represents the lowest priority.

CFI (Canonical Format Indicator) –used for compatibility reason between Ethernet type network and Token Ring type network. It is always set to zero for Ethernet switches. If a frame received at an Ethernet port has a CFI set to 1, then that frame should not be forwarded as it is to an untagged port.

Appendix B: System Names

The following table outlines the Yealink phone models and their system names:

Model	System Name
SIP-T58A	SIP-T58
SIP-T56A	SIP-T56A
SIP-T55A	SIP-T55A

Model	System Name
SIP-CP960	SIP-CP960
VP59	VP59
MP54	MP54
MP56	MP56
MP58	MP58
MP58-WH	MP58

Appendix C: Model Names

The following table outlines the Yealink phone models and their model names:

Model	Model Name
SIP-T58A	SIP-T58
SIP-T56A	SIP-T56A
SIP-T55A	SIP-T55A
SIP-CP960	SIP-CP960
VP59	VP59
MP54	Teams_MP54
MP56	Teams_MP56
MP58	Teams_MP58
MP58-WH	Teams_MP58

Appendix D: Power Values

The following table outlines the power value sent in LLDP-MED:

Model	Power Value
SIP-T58A	11400mW
SIP-T56A	8800mW
SIP-T55A	7000mW
SIP-CP960	12000mW
VP59	12900mW
MP54	8020mW

Model	Power Value
MP56	8100mW
MP58	10000mW
MP58-WH	10000mW

Appendix E: Normative References

LLDP and LLDP-MED: http://en.wikipedia.org/wiki/Link_Layer_Discovery_Protocol

CDP: http://en.wikipedia.org/wiki/Cisco_Discovery_Protocol

IEEE 802.3: <http://www.ieee802.org/3/>

VLAN: http://en.wikipedia.org/wiki/Virtual_LAN

IEEE 802.1q: <http://en.wikipedia.org/wiki/802.1Q>

LLDP on Cisco Switch:

http://www.cisco.com/en/US/docs/switches/lan/catalyst3750/software/release/12.2_55_se/configuration/guide/swlldp.html

CDP on Cisco Switch:

http://www.cisco.com/c/en/us/td/docs/switches/lan/catalyst3750/software/release/12-2_55_se/configuration/guide/scg3750/swcdp.html

Customer Feedback

We are striving to improve our documentation quality and we appreciate your feedback. Email your opinions and comments to DocsFeedback@yealink.com.