



Yealink Network Technology CO., LTD

Yealink VC400 Video Conferencing System Quick Start Guide

V23.20

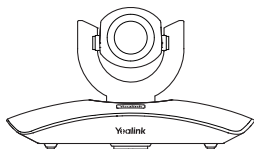
Applies to firmware version 30.23.0.20 or later

Table of Contents

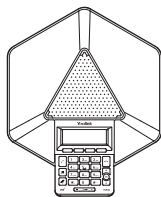
Packaging Contents	01
Connections	02
Remote Control and Cable Ties Installation	03
Bracket and Camera Installation	04
Main Screen	06
Network Deployment	07
Troubleshooting	11



Packaging Contents



VCC18 Camera



VCP40 Video Conferencing Phone



VC400 Codec



VCR10 Remote Control



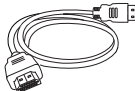
AAA Batteries × 2



DVI Cable



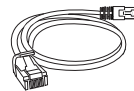
HDMI-VGA Direct Cable



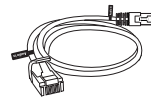
HDMI Cable × 2



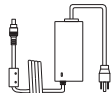
3.5mm Audio Cable



Ethernet Cable
(2m)



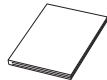
Ethernet Cable
(7.5m)



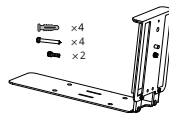
Power Adapter



Cable Ties × 7



Quick Start Guide



Mounting Bracket
and Accessories



Velcro × 2
(One Velcro is on the bracket)



Optional Accessory

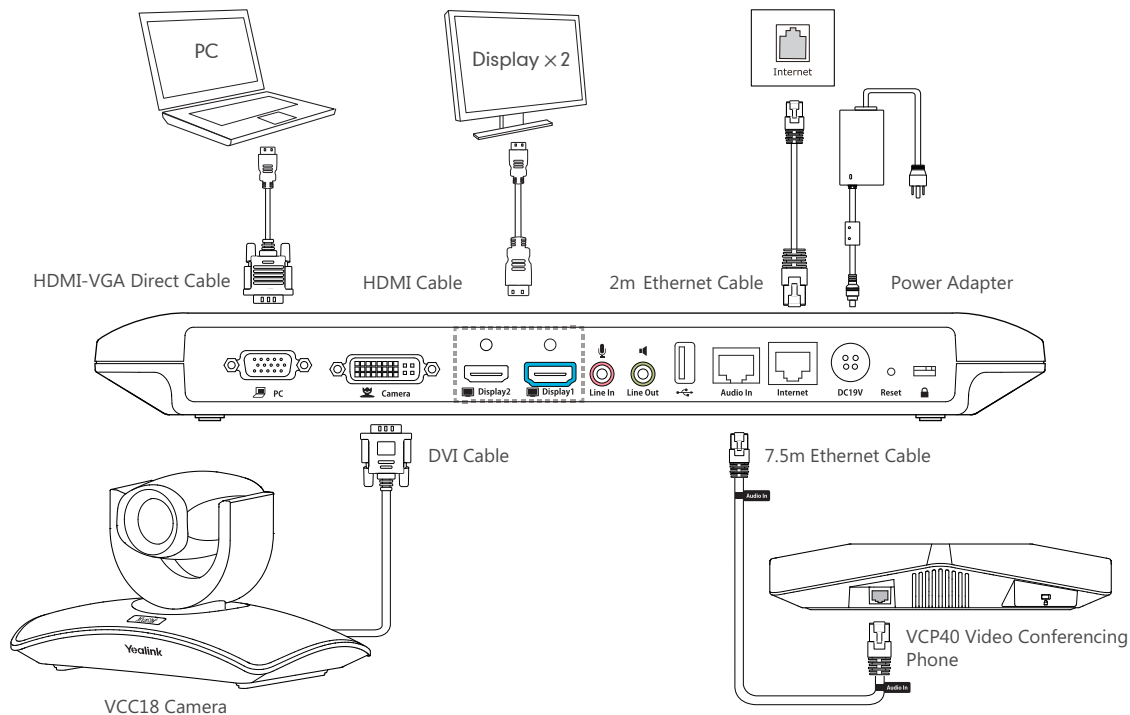


Please use the Yealink-customized DVI cable.



We recommend that you use the accessories provided or approved by Yealink. The use of unapproved third-party accessories may result in reduced performance.

Connections

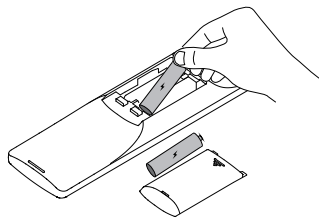


Please connect to the Display1 port if you only have one display device

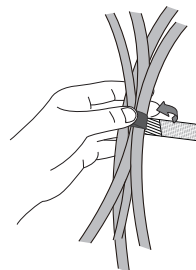
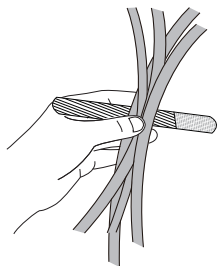
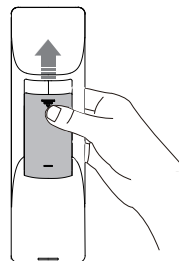


The system should be used with Yealink original power adapter (19V/3.42A) only. The use of the third-party power adapter may cause the damage to the system

Remote Control and Cable Ties Installation



Install batteries

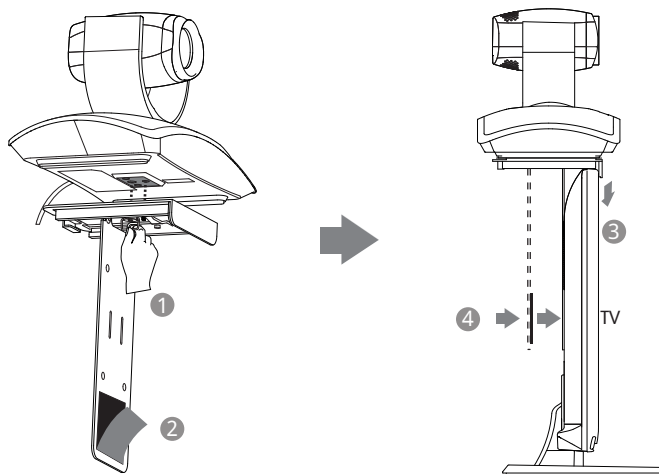


Fasten the cables with the cable tie

Bracket and Camera Installation

- Hanging Mode

Please chose the following installation mode when the thickness of the TV is between 35-120mm

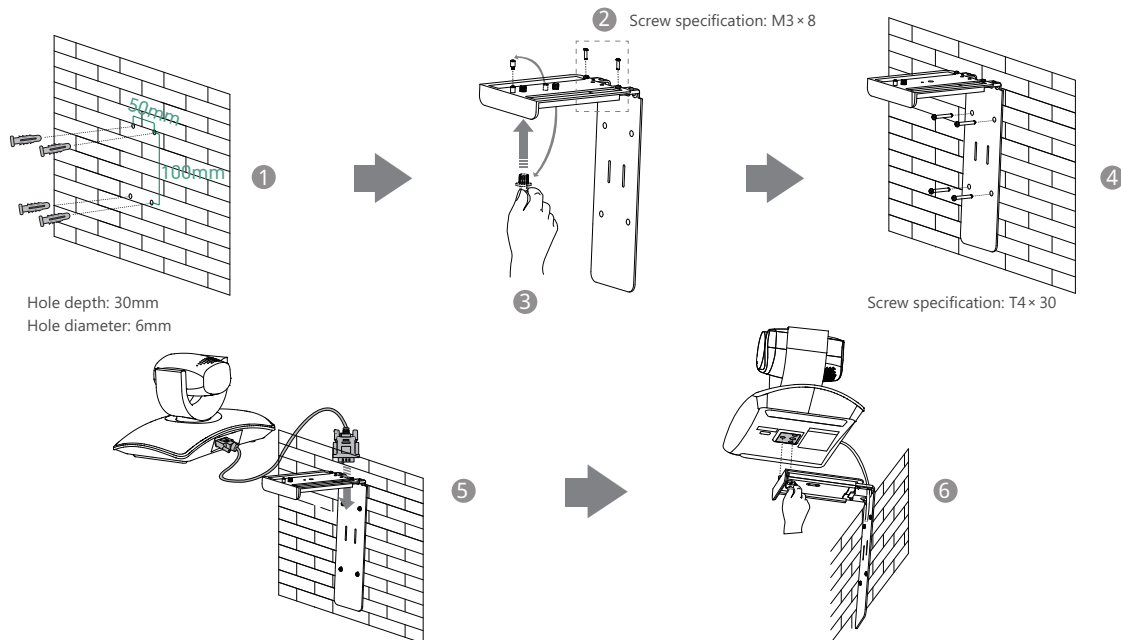


Steps: ① Lock the camera to the L-bracket. ② Remove one Velcro. ③ Put the L-bracket on the top of the TV.
④ Stick a Velcro onto the back of the TV, and make sure that the bracket and the back of the TV are tightly positioned against each other.



The Velcro cannot be reused, so that make sure the back of the TV is clean before sticking a Velcro

● Wall Mount Method



Steps : ① Punch holes & Insert expansion bolts ② Drive screws ③ Adjust the screws position and manually lock them
④ Insert screws to lock the bracket to the wall ⑤ Connect DVI cable ⑥ Lock the camera

💡 The recommended height for camera positioning is 1.5m-1.8m above the ground

Main Screen



Network Deployment

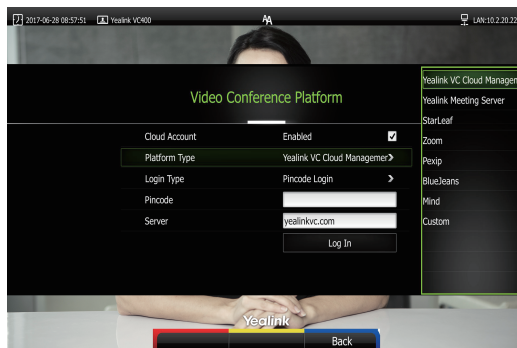
VC400 supports two network deployment methods: Cloud deployment and traditional deployment. Choose the desired deployment method according to your needs.

● Cloud Deployment

With Cloud service, organizations can communicate using the Cloud platform, so that complex network settings are unnecessary. You can log into Yealink VC Cloud Management Service/Yealink Meeting Server/StarLeaf/Zoom/Pexip/BlueJeans/Mind platform using VC400 video conferencing system. Get account information from your administrator.

Do the following to log into your VC400 via remote control:

- Select **Menu->Advanced** (Default Admin Password:0000)->**Video Conference Platform**.
- In the **Cloud Account** field, check the **Enabled** checkbox.
- Select the desired platform from the pull-down list of **Platform Type**.



- Configure the desired platform and log in.

● Traditional Deployment

If you do not log into the Cloud platform, you can choose traditional deployment method to deploy your VC400, and dial the IP address of other device to make a call.

In order to ensure that the VC400 can work properly, please configure it according to the actual situation.

If it is in the head office, please make sure that it is reachable from public network. If it is in the branch office, please use intelligent traversal to deploy it or just follow the same steps as for the head office.

Head Office

If you deploy VC400 in the head office, at least one static public IP address is required in the head office to allow branch offices to connect. Do one of the following to deploy VC400:

Option1: To deploy the VC400 on a public network, at least one static public IP address is required, you need to assign a static public IP address to the VC400.

Option2: To deploy the VC400 in an Intranet (behind the firewall), you must assign a static private IP address to the VC400. In the meantime, do port mapping on the firewall for VC400.

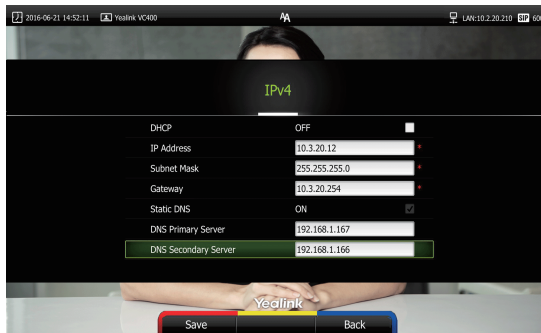
Configure a Static IP

The following introduces how to configure a static IP address for the VC400.

For example: use the remote control to configure a static IPv4 address to your VC400.

- Select **Menu->Advanced** (Default Admin Password:0000)->**Internet Configuration**.
- Select **IPv4** from the pull-down list of **IP Mode**.
- Press ▲ or ▼ to scroll to **IPv4**, and then press (OK).
- Turn off the **DHCP**.

- Enter the IP address, subnet mask, gateway and DNS information in corresponding fields.



- Press **Save** to save the configuration.
- The screen prompts **Reboot now** . Press **OK** to reboot the system.

Configure Port Mapping

If the VC400 is deployed in an Intranet, and you want to solve the interconnection problem by port mapping, you must forward the following ports to the public network on the firewall.


Function	Port	Protocol Type
H.323 signal port	1719-1720	UDP/TCP
Audio & Video media stream port	50000-50499	TCP/UDP
Web management port (optional)	443	TCP
SIP (optional)	5060	TCP/UDP


Branch Office

If you deploy VC400 in the branch office, do one of the following to deploy it:

Option1: Deploy the VC400 following the same steps as for the head office. In this way, both inbound and outbound calls are available.

Option2: Deploy the VC400 using intelligent traversal, which means that plug and play is possible without any further firewall configuration, but only outbound calls are available.

 Please note that when the VC400 is deployed with intelligent traversal, you have to open ports (as shown below) if they are restricted

 It is recommended that you forward the web management port(443/TCP) to the public network, so that the head office can remotely manage the branch office.

Function	Port	Protocol Type
H.323 signal port	1719-1720	UDP/TCP
Audio & Video media stream port	50000-50499	TCP/UDP
SIP (optional)	5060-5061	TCP/UDP

Bandwidth Requirements

To ensure the best video conference performance , the recommended bandwidth for VC400 is as below:

Video Resolution	Recommended Bandwidth
Full HD 1080P	1.3Mb
People 1080P+Content 1080P	2.6Mb



For more information on configurations, contact your system administrator.



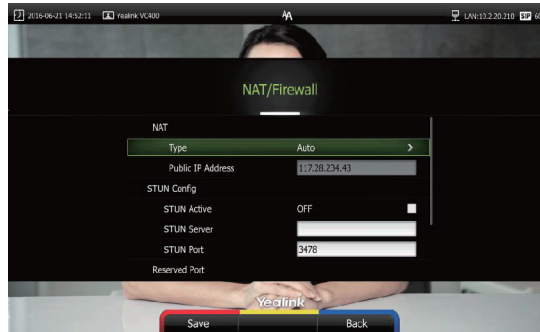
The bandwidth mentioned above is based on a two-way conference. Head office bandwidth should be increased in line with the growing number of connected branch offices.

Troubleshooting

- After installation and deployment, you can test the VC400 by dialing the Yealink Demo Room. If you cannot dial out successfully, please contact your IT administrator to check the internal network configuration.
- If you do not use Cloud platform and deploy your VC400 in an Intranet, you have configured port mapping on the firewall or gateway, but you find that local system appears black screen and you cannot hear sound when you call Yealink Demo Room or other systems. The most likely reason is that the firewall or gateway in your environment does not support the H.323 ALG feature. In this situation, please take the following actions so that the NAT feature on the VC400 can solve this problem.

To configure NAT via the remote control:

- Select **Menu**->**Advanced** (Default Admin Password:0000)->**NAT/Firewall**.
- Select **Auto** from the pull-down list of **Type**, the system will obtain public IP address automatically.
- If the system does not obtain a public IP address automatically, select **Manual Settings** from the pull-down list of **Type**, and then enter the public IP address in the **Public IP Address** field.



Yealink Demo Room IP: 117.28.251.50、 117.28.251.51



For more information, visit the Yealink website:
www.yealink.com



VC400-EN

YEALINK(XIAMEN) NETWORK TECHNOLOGY CO.,LTD.

Web: www.yealink.com | Addr: 309, 3th Floor, No.16, Yun Ding North Road, Huli District, Xiamen City, Fujian, P.R. China

Copyright©2017YEALINK(XIAMEN) NETWORK TECHNOLOGY CO.,LTD. All rights reserved.

