



Yealink Network Technology CO., LTD

## Yealink VC400 Video Conferencing System Quick Start Guide

V21.20

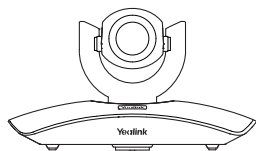
Applies to firmware version 30.21.0.20 or later

## Table of Contents

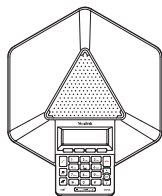
Packaging Contents	01
Connections	02
Remote Control and Cable Ties Installation	03
Bracket and Camera Installation	04
Main Screen	06
Network Deployment	07
Troubleshooting	11



## Packaging Contents



VCC18 Camera



VCP40 Video Conferencing Phone



VC400 Codec



VCR10 Remote Control



AAA Batteries × 2



DVI Cable



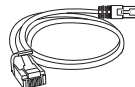
VGA Cable



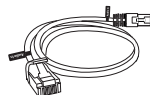
HDMI Cable × 2



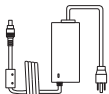
3.5mm Audio Cable



Ethernet Cable  
(2m)



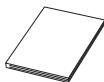
Ethernet Cable  
(7.5m)



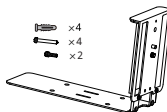
Power Adapter



Cable Ties × 7



Quick Start Guide



Camera Mounting Accessories



Velcro × 2



Optional Accessory

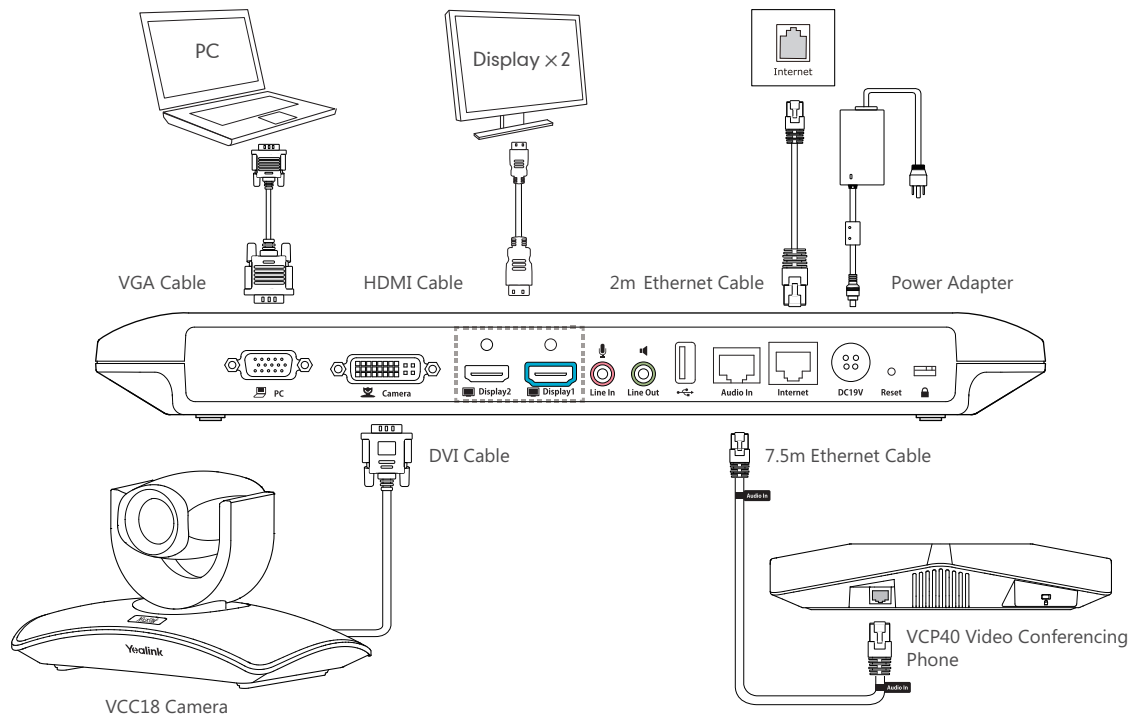


Please use the Yealink-customized DVI cable



We recommend that you use the accessories provided or approved by Yealink. The use of unapproved third-party accessories may result in reduced performance.

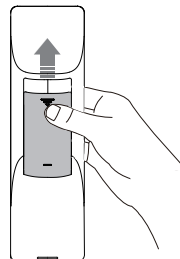
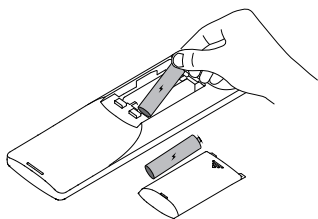
## Connections



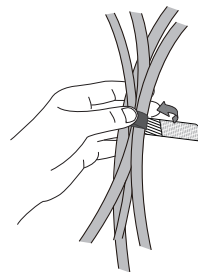
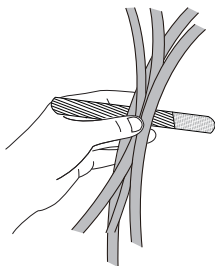
💡 Please connect to the Display1 port if you only have one display device

💡 The system should be used with Yealink original power adapter (19V/3.42A) only. The use of the third-party power adapter may cause the damage to the system

## Remote Control and Cable Ties Installation



Install batteries

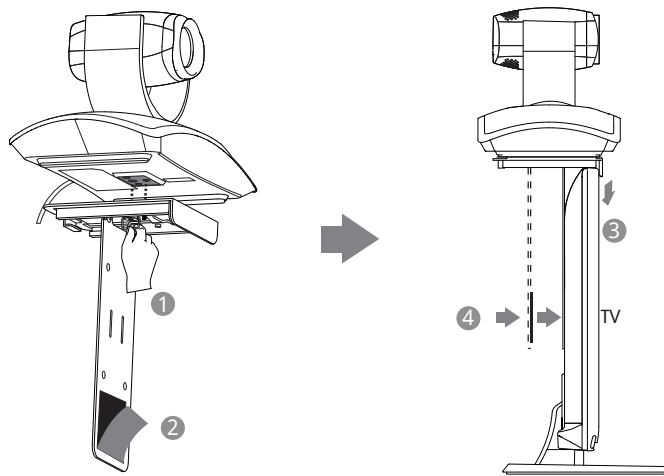


Fasten the cables with the cable tie

## Bracket and Camera Installation

- Hanging Mode

Please chose the following installation mode when the thickness of the TV is between 35-120mm

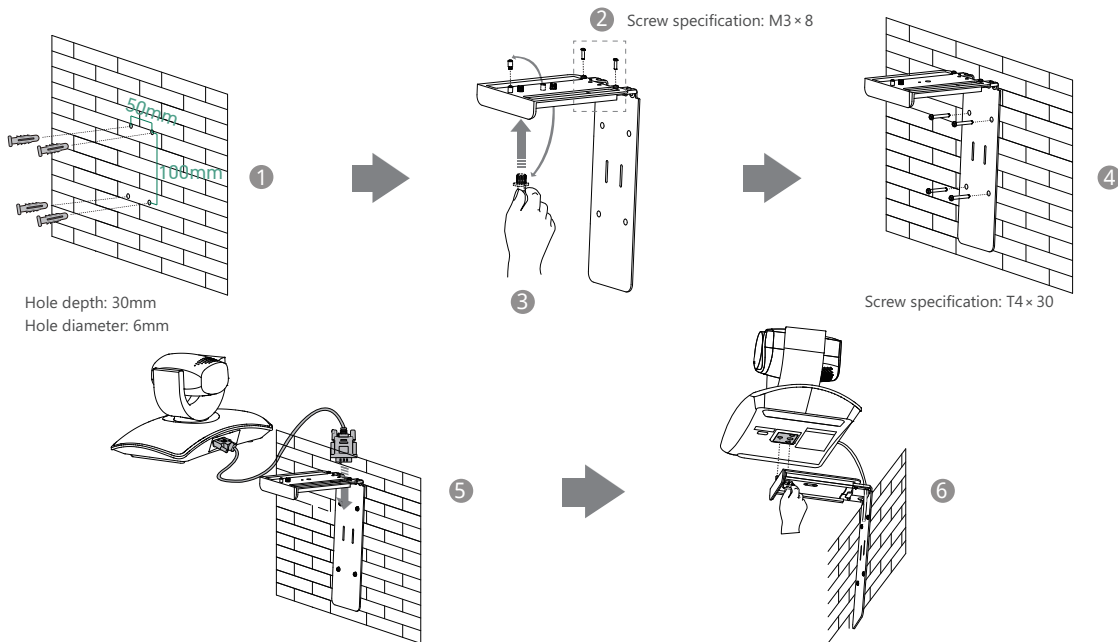


- Steps: ① Lock the camera to the L-bracket. ② Remove the protection of the Velcro. ③ Put the L-bracket on the top of the TV. ④ Make sure the back of the TV is clean, and then adjust the bracket to ensure close adhesion to the back of the TV with Velcro.



Adjust the bracket to ensure close adhesion to the back of the TV

## ● Wall Mount Method



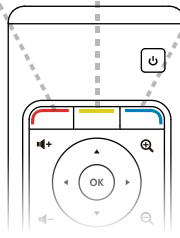
Steps: ① Punch holes & Insert expansion bolts ② Drive screws ③ Adjust the screws position and manually lock them  
④ Insert screws to lock the bracket to the wall ⑤ Connect DVI cable ⑥ Lock the camera



The recommended height for camera positioning is 1.5m-1.8m above the ground



## Main Screen



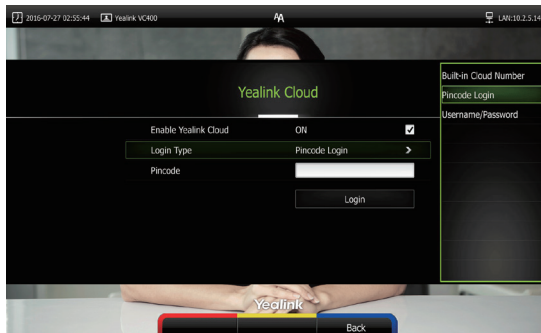
## Network Deployment

VC400 supports two network deployment methods: Yealink Cloud deployment and traditional deployment. Choose the desired deployment method according to your needs.

### ● Yealink Cloud Deployment

With Yealink VC Cloud management service, organizations can communicate just using a Cloud account. Both the head office and the branch offices can use this deployment method. Get Cloud account information from your Cloud enterprise administrator, and do the following to sign into your VC400 via remote control:

- Select **Menu->Advanced** (Admin Password:0000)->**Yealink Cloud**
- Select desired sign-in method from the pull-down list of **Login Type**
  - 1) You can sign into the 9-digit enterprise Cloud account using PIN code or username/password (enterprise Cloud account can be managed via Yealink VC Cloud Management Service)
  - 2) You can also use 7-digit build-in Cloud number (build-in Cloud number cannot be managed via Yealink VC Cloud Management Service)



## ● Traditional Deployment

If you do not use Cloud accounts, you can choose traditional deployment method to deploy your VC400, and dial IP addresses of other devices to make a call.

In order to ensure that the VC400 can work properly, please configure it according to the role it plays in the meeting. If it is in the head office, please make sure that it is reachable from public network. If it is in branch office, please use intelligent firewall traversal to deploy it or just follow the same steps as for the head office.

## Head Office

If you deploy VC400 in the head office, at least one static public IP address is required in the head office to allow branch offices to connect. Do one of the following to deploy VC400:

**Option1:** To deploy the VC400 on a public network, at least one static public IP address is required, you need to assign a static public IP address to the VC400.

**Option2:** To deploy the VC400 in an Intranet (behind the firewall), you must assign a static private IP address to the VC400. In the meantime, do port mapping on the firewall for VC400.

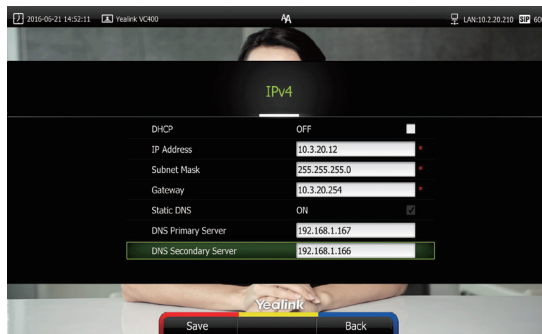
## Configure a Static IP

The following introduces how to configure a static IP address for the VC400.

For example: use the remote control to configure a static IPv4 address to your VC400.

- Select **Menu->Advanced** (Admin Password:0000)->**LAN Configuration**
- Select **IPv4** from the **IP Mode** pull-down list
- Select **IPv4**
- Turn off the **DHCP**

- Enter the IP address, subnet mask, gateway and DNS information in corresponding fields.



- Press **Save** to save the configuration,
- The screen prompts **Reboot now** . Press **OK** to reboot the system.

## Configure Port Mapping

If the VC400 is deployed in an Intranet, and you want to solve the interconnection problem by port mapping, you must forward the following ports to the public network on the firewall.


Function	Port	Protocol Type
H.323 signal port	1719-1720	UDP/TCP
Audio & Video media stream port	50000-50499	TCP/UDP
Web management port ( optional )	443	TCP
SIP ( optional )	5060	TCP/UDP

## Branch Office

If you deploy VC400 in the branch office, do one of the following to deploy it:

**Option1:** Deploy the VC400 following the same steps as for the head office. In this way, both inbound and outbound calls will be available.

**Option2:** Deploy the VC400 using an intelligent firewall, which means that plug and play is possible without any further firewall configuration, but only outbound calls are available.

 Please note that when the VC400 is deployed with an intelligent firewall, you have to open ports (as shown below) permission if they are restricted

 It is recommended that you forward the web management port(443/TCP) to the public network, so that the head office can remotely manage the branch office.

Function	Port	Protocol Type
H.323 signal port	1719-1720	UDP/TCP
Audio & Video media stream port	50000-50499	TCP/UDP
SIP ( optional )	5060-5061	TCP/UDP

## Bandwidth Requirements

To ensure the best video conference performance , the recommended bandwidth for VC400 is as below:

Video Resolution	Recommended Bandwidth
Full HD 1080P	1.3Mb
People 1080P+Content 1080P	2.6Mb



For more information on configurations, contact your system administrator.



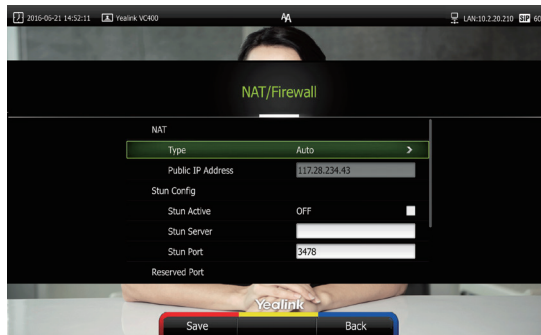
The bandwidth mentioned above is based on a two-way conference. Head office bandwidth should be increased in line with the growing number of connected branch offices.

## Troubleshooting

- After installation and deployment, you can test the VC400 by dialing the Yealink Demo Room. If you can't dial out successfully, please contact your IT administrator to check the internal network configuration.
- Assume that you are A in head office. Using the configuration method explained in "Head Office" chapter on page 8, you find that you can call B in branch office or Yealink Demo, but that they cannot call you. The most likely reason is that the firewall or gateway in the environment does not support the H.323 ALG feature. In this situation, please take the following actions so that the NAT feature on the VC400 can solve this problem.

To configure NAT via the remote control:

- Select **Menu->Advanced** (Admin Password:0000)->**NAT/Firewall**
- Select **Auto** from the **Type** pull-down list, the system will obtain public IP address automatically.
- If the system does not obtain a public IP address automatically, select **Manual Settings** from the **Type** pull-down list, and then enter the public IP address in the **Public IP Address** field.



Yealink Test Room IP: 117.28.251.50、117.28.251.51



For more information, visit the Yealink website:  
[www.yealink.com](http://www.yealink.com)

YEALINK(XIAMEN) NETWORK TECHNOLOGY CO.,LTD.

Web: [www.yealink.com](http://www.yealink.com) | Addr: 309, 3th Floor, No.16, Yun Ding North Road, Huli District, Xiamen City, Fujian, P.R. China | Copyright©2016Yealink Inc.All right reserved.

