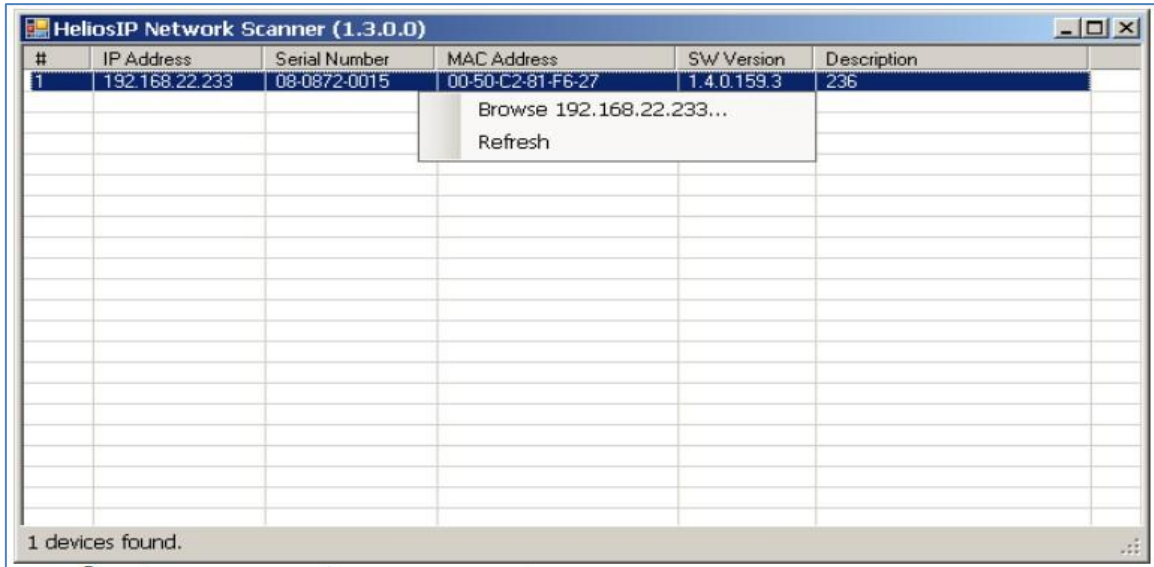


How to configure 2n door phone on VP530

- (1). Firstly, download the related instruction of 2n door phone from their website, follow it and install the device correctly. Secondly you can obtain the IP address of the device by the tone signaling, or you can scan the IP address by the 2N_Helios_IP_Toolkit that provide by them. Refer to the screenshot below,

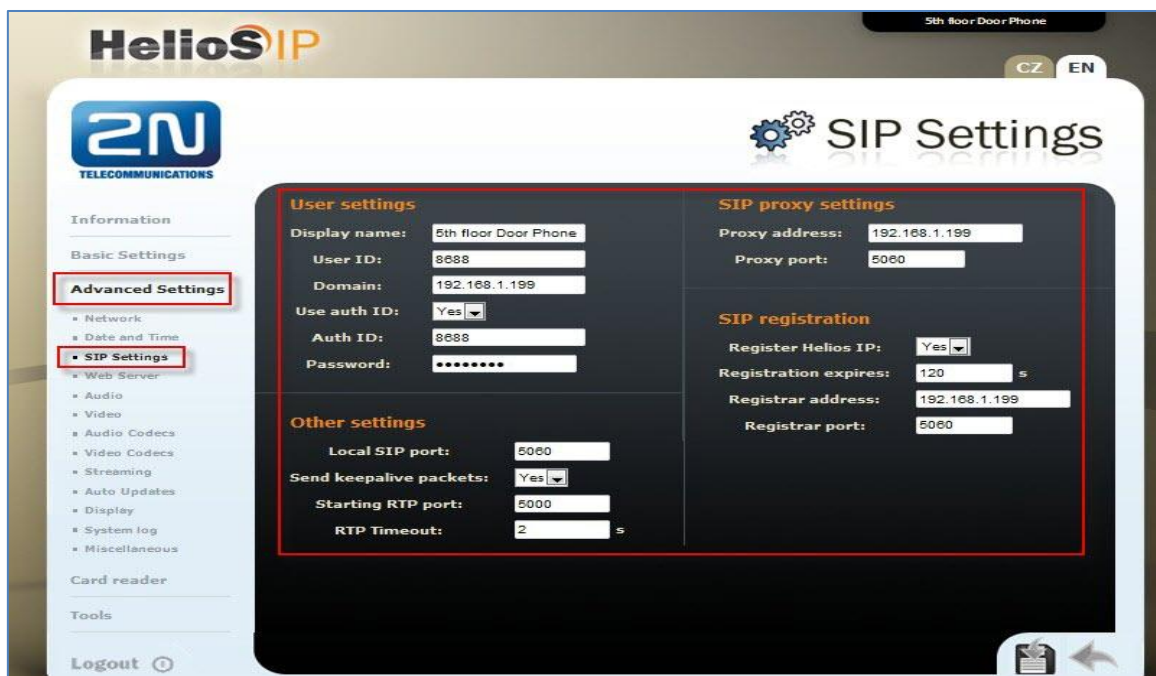


- (2). After you obtain the IP address of the device, you can login the webpage to configure it by the link: <http://IP address of the device/>, the default account/password are: Admin/2n. Refer to the screenshot below,



(3). SIP account setting path: Advanced Setting → Sip Settings

Refer to the screenshot below,



(4). Audio codec setting path: Advanced Settings → Audio Codecs

Refer to the screenshot below,



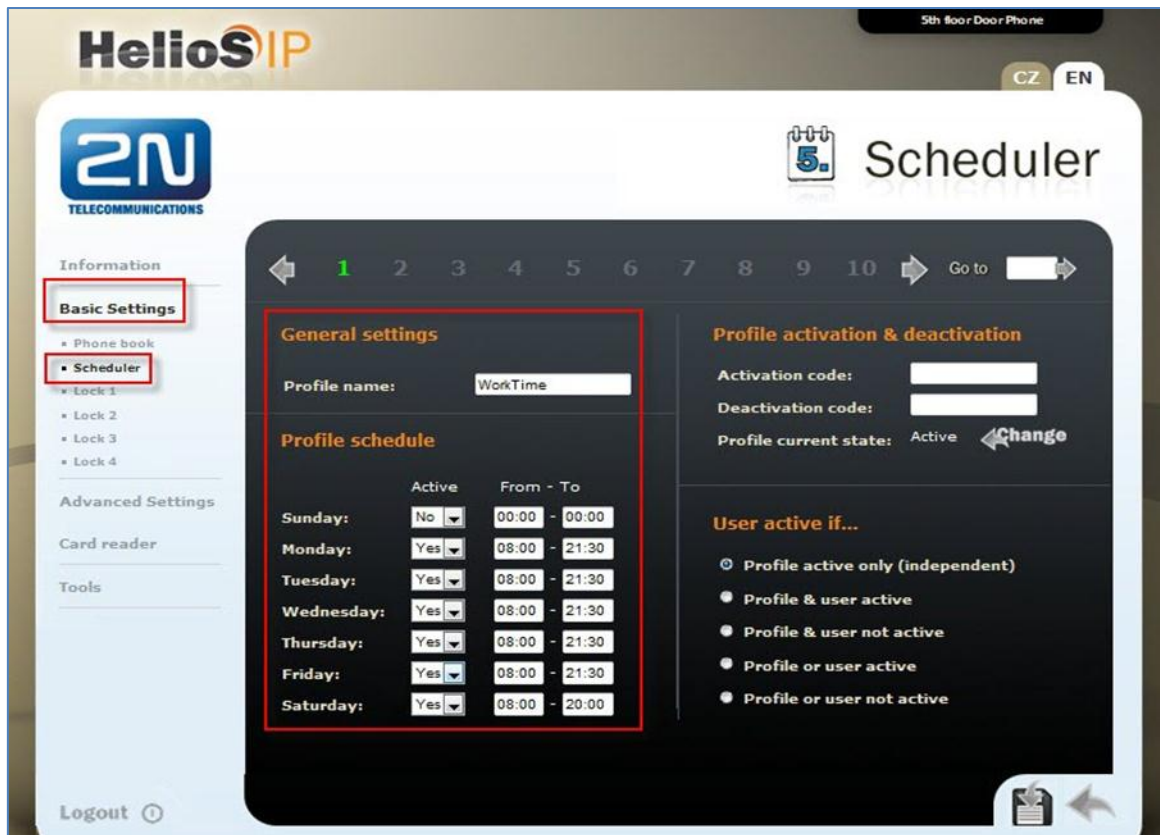
(5). Video Code setting path: Advanced Settings → Video Codecs

Refer to the screenshot below,



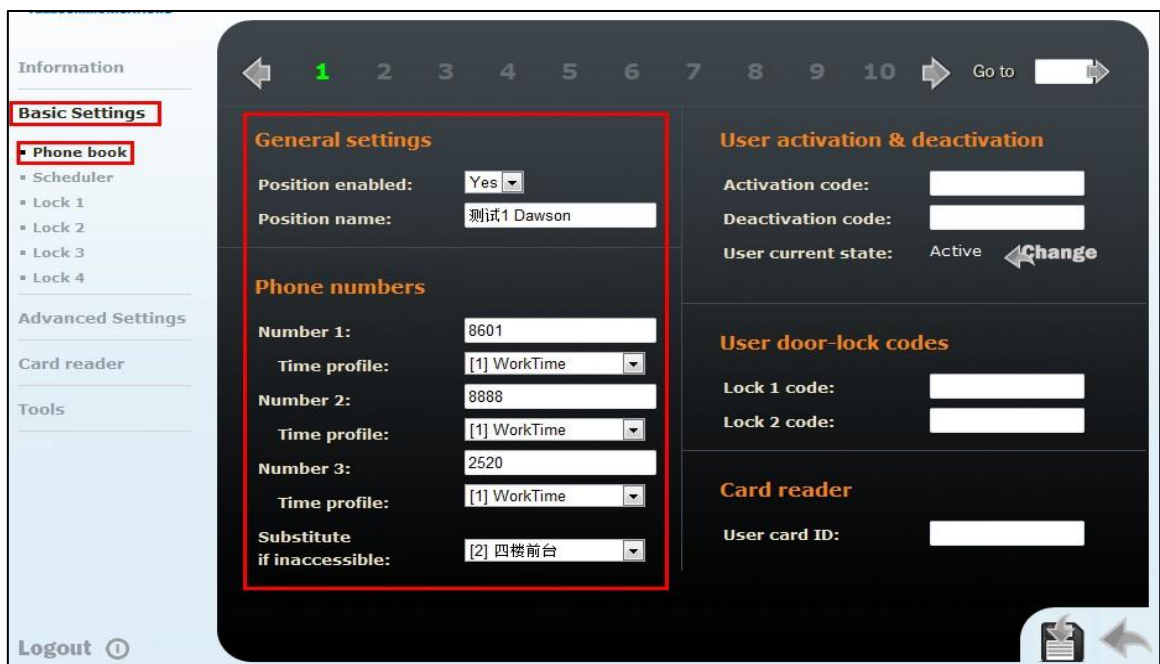
(6). Scheduler setting path: Basic Settings → Scheduler

Refer to the screenshot below,



(7). Setting the remote extension number to control the DoorPhone: Basic Settings → Phone book

Refer to the screenshot below,



(8). Setting path of VP530: Phone → Door Phone

Refer to the screenshot below,

The screenshot shows the Yealink web interface. The top navigation bar includes 'Status', 'Account', 'Network', 'DSS Key', 'Phone' (highlighted), 'Directory', and 'Security'. The left sidebar has a 'Door Phone' option highlighted under the 'Action URL' section. The main content area displays the 'Door Phone List' table with 'Door Phone1' selected. Below the table, the configuration form for 'Door Phone1' is shown, including fields for Device (2N), Display Name (DoorPhone), Phone Number (8688), Unlock PIN (*****), Full Screen (Disable), Send Audio (Enable), and Send Video (Enable). The 'Confirm' and 'Cancel' buttons are at the bottom of the form.

(9). Reference:


<http://www.2n.cz/en/>

<http://www.yealink.com/>

(10). FAQ

a). If the VP530 can't unlock the 2n door phone please check the value of the Legacy lock code parameter is YES, (The path of 2n door phone configure webpage: Advanced Setting/Miscellaneous/Legacy lock code)

Refer to the screenshot below,



Information

Basic Settings

Advanced Settings

▪ Network

▪ Date and Time

▪ SIP Settings

▪ Web Server

▪ Audio

▪ Video

▪ Audio Codecs

▪ Video Codecs

▪ Streaming

▪ Auto Updates

▪ Display

▪ System log

▪ E-mail

▪ Miscellaneous

Miscellaneous

Outgoing calls

Ring time limit: 15 s

Call time limit: 300 s

Dial cycles limit: 4

Incoming calls

Automatic pick up: Yes

Activation mode: Automatic

Activation code:

Keyboard settings

Hang up by # button: Yes

Same button function: Hang up

Quick dial by numbers: Yes

Floor & Appartment dialing: No

Next keypress timeout: 4 s

Enable telephone mode: No

Dial digits limit: 4

Legacy lock code: Yes

Other settings

Backlight level: 50%

DHCP on/off by buttons: Yes

Enable lock control by http: No