

How to Upgrade EHS36 Firmware

This document provides instructions on how to upgrade EHS36 firmware. EHS36 firmware upgrade is supported on the following IP phones with specific firmware versions. The EHS firmware version is based on the phone firmware. Check the EHS firmware version according to the following table after its upgrade is completed.

Phone Model	Phone Firmware Version	EHS Firmware Version
SIP-T46G	28.80.200.1.rom	3.16.0.0
SIP-T42G	29.80.200.1.rom	3.16.0.0
SIP-T29G	46.80.200.1.rom	3.16.0.0
SIP-T46S	66.82.0.200.rom	5.16.0.0

[Click Here](#) to get the relevant IP phone firmware, or contact the distributor or Yealink support for the firmware.

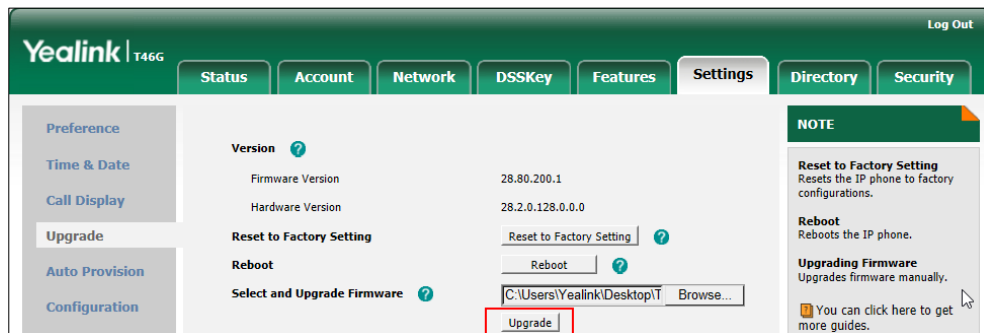
Upgrading the EHS36 Firmware

There are three steps to upgrade the EHS36 firmware:

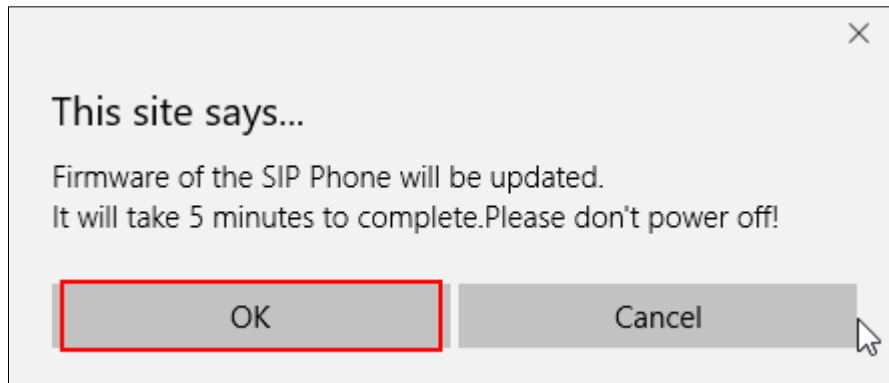
1. [Upgrading the IP Phone Firmware](#)
2. [Configuring a Zero Touch Key](#)
3. [Upgrading the EHS36 Firmware.](#)

Upgrading the IP Phone Firmware

1. Download the IP phone specific firmware to your local PC.
2. Log in the IP phone web user interface.
3. Navigate to **Settings -> Upgrade.**
4. Click **Browse** to locate the required firmware from your local system.
5. Click **Upgrade.**



- Click **OK** to confirm the upgrade.



- Wait for the firmware upgrading. After the upgrade is completed, navigate to **Status** page, check the firmware version.

- Do not close or refresh the browser during the firmware upgrade.
- Remember to upgrade the IP phone firmware to the standard version after you finished the EHS36 firmware upgrade. The IP phone special firmware version is for EHS36 firmware upgrade, not for normal use.

Configuring a Zero Touch Key

- Log in the IP phone web user interface.
- Navigate to **DSS Key->Line Key**.
- Select the desired DSS key, and set the **Type** option to **Zero-Touch**.

The screenshot shows the Yealink T46G web interface. The top navigation bar includes 'Status', 'Account', 'Network', 'DSSKey', 'Features', 'Settings', 'Directory', and 'Security'. The 'DSSKey' tab is selected. On the left, a sidebar lists 'Line Key 1-9', 'Line Key 10-18', 'Line Key 19-27', 'Programable Key', and 'Ext Key'. The main area displays a table for configuring line keys. The table has columns: Key, Type, Value, Label, Line, and Extension. 'Line Key9' is highlighted with a red box, showing its Type as 'Zero Touch'. A 'Confirm' button is at the bottom right of the table.

Key	Type	Value	Label	Line	Extension
Line Key1	Line	Lock	2543	Line 1	
Line Key2	Line	Default	9000	Line 2	
Line Key3	Line	Default	9001	Line 3	
Line Key4	Line	Default	9002	Line 4	
Line Key5	Line	Default	202	Line 5	
Line Key6	Line	Default		Line 6	
Line Key7	Line	Default		Line 10	
Line Key8	N/A			N/A	
Line Key9	Zero Touch			N/A	

- Click **Confirm** to accept the change.

Upgrading the EHS36 Firmware

Disconnect the EHS36 from the IP phone first, then start to upgrade the EHS firmware.

To upgrade the EHS36 firmware (take a SIP-T46G IP phone as an example):

- Press the Zero Touch key.

The phone LCD screen will prompt an update wizard:



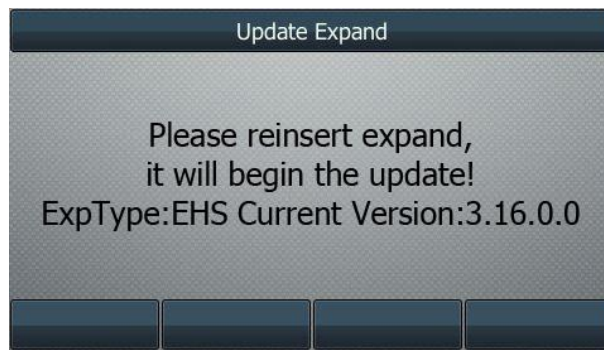
- Press the **OK** soft key within 5 seconds.

The phone LCD screen will prompt "Please insert expansion!".



- Connect an EHS36 to the back Ext port of the IP phone. For more information, refer to [Yealink EHS36 User Guide](#).

The phone LCD screen displays the current EHS version.



4. Disconnect and reconnect the EHS36 to the back Ext port of the IP phone.

The EHS36 will update firmware automatically. After the upgrade is completed, the phone LCD screen will prompt "Update Success!".



The phone LCD screen will prompt "Please insert expansion!" again. You can repeat the above steps 3-4 to upgrade other EHS36 devices.

Do not disconnect the EHS36 or power off the IP phone during the upgrade. If the EHS36 is disconnected or the IP phone power is down, reboot the phone, and restart EHS36 firmware upgrade.