

## Using Security Certificates on Skype for Business phones

---

This guide provides the detailed instructions on how to configure and use certificates on Skype for Business phones. In addition, this guide provides step-by-step instructions on how to create custom certificates for Skype for Business phones.

This guide applies to the MP56, T58A, T56A, T55A, T48S, T46S, T42S and T41S Skype for Business phones running firmware version 9 or later and CP960 Skype for Business phones running firmware version 8 or later.

### Introduction

Certificate is an important element in deploying a solution that ensures the integrity and privacy of communications involving Skype for Business phones.

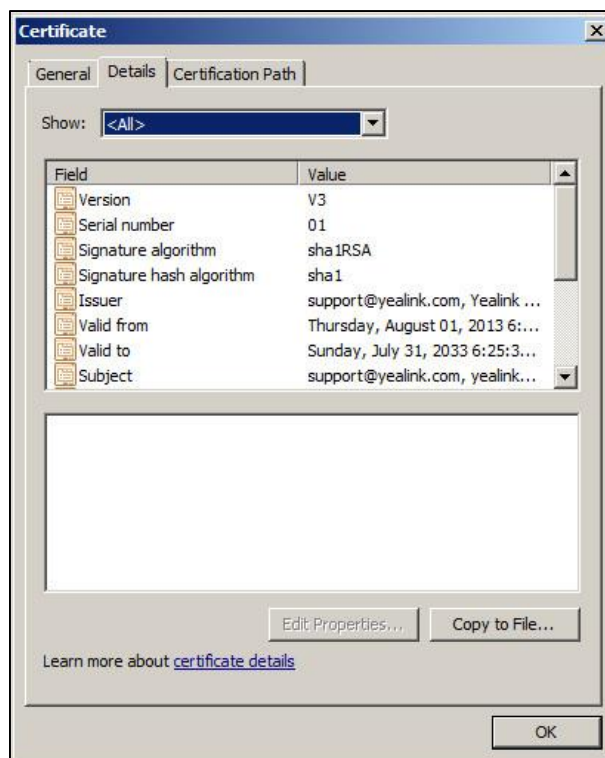
Three types of certificates are pre-loaded on Skype for Business phones and comply with X.509 standard.

- **A unique device certificate:** It is installed at the time of manufacture and is unique to a Skype for Business phone (based on the MAC address) and issued by the Yealink Certificate Authority (CA).
- **A generic device certificate:** It is installed by default and is issued by the Yealink Certificate Authority (CA). If no unique certificate exists, the Skype for Business phone may send a generic certificate for authentication.

- **Trusted certificates (Certificate Authority certificates):**

For MP56/T58A/T56A/ T55A/T48S/T46S/T42S/T41S/CP960 Skype for Business phones, there are 51 trusted certificates installed by default. Refer to [Appendix B: Trusted Certificate Authority List](#) on page 11 for more information.

The following shows an example of a Yealink generic certificate. For the information on fields of X.509 certificate, refer to [Appendix A X.509 Certificate Structure](#) on page 11.



## Configuring Trusted Certificates on Skype for Business phones

When a Skype for Business phone requests an SSL connection with a server, the phone should verify that whether the server can be trusted. The server sends its certificate to the phone and the phone verifies this certificate based on its trusted certificates list.

The MP56/T58A/T56A/ T55A/T48S/T46S/T42S/T41S/CP960 Skype for Business phones have 51 built-in trusted certificates. For more information, refer to [Appendix B: Trusted Certificate Authority List](#) on page 11. The phone supports uploading 10 custom trusted certificates (CA certificates) at most. For more information on customizing a trusted certificate, refer to [Appendix C Creating Custom Certificates](#) on page 13.

### Note

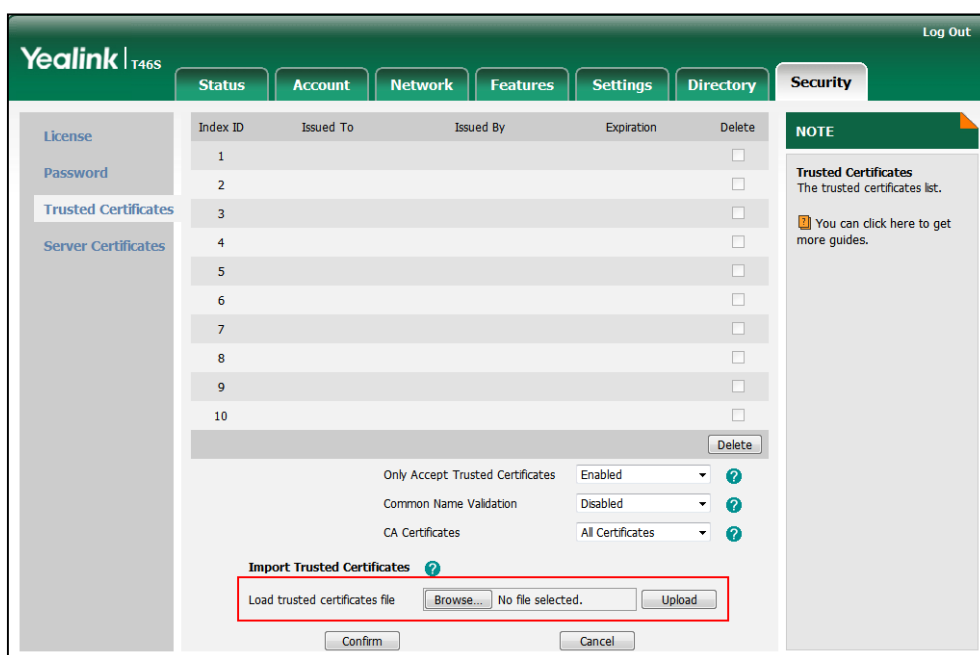
To determine whether a certificate is within its valid time range, check that the time and date on the phone are configured properly.

## Configuring Trusted Certificate via Web User Interface

**To upload a trusted certificate via web user interface:**

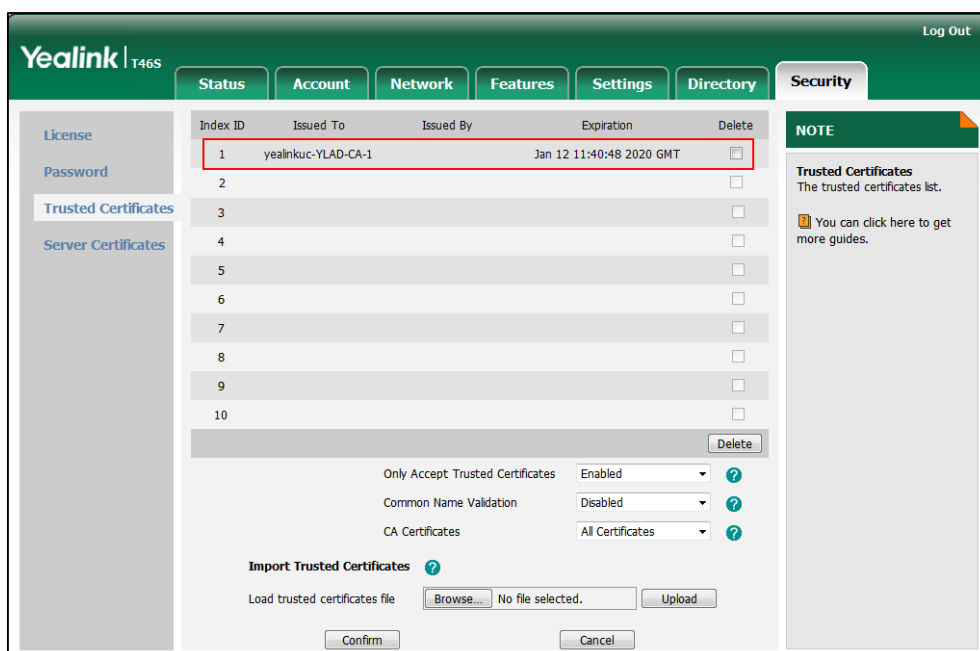
1. Click on **Security->Trusted Certificates**.

- Click **Browse** to locate the certificate (\*.pem, \*.crt, \*.cer or \*.der) from your local system.



- Click **Upload** to upload the certificate.

The information of the custom trusted certificate is displayed on the web user interface of the Skype for Business phone.

**Note**

The information of built-in trusted certificates is not displayed on the web user interface of the Skype for Business phone.

**To configure trusted certificates via web user interface:**

1. Click on **Security->Trusted Certificates**.
2. Select the desired value from the pull-down list of **Only Accept Trusted Certificates**.
  - If **Enabled** is selected, the Skype for Business phone will verify the server certificate based on the trusted certificates list. Only when the authentication succeeds, the Skype for Business phone will trust the server.
  - If **Disabled** is selected, the Skype for Business phone will trust the server no matter whether the certificate received from the server is valid or not.
3. Select the desired value from the pull-down list of **Common Name Validation**.
  - If **Enabled** is selected, the Skype for Business phone will verify the CommonName or subjectAltName of the server certificate.
  - If **Disabled** is selected, the Skype for Business phone will not verify the CommonName or subjectAltName of the server certificate.
4. Select the desired value from the pull-down list of **CA Certificates**.
  - If **Default Certificates** is selected, the Skype for Business phone will verify the server certificate based on the built-in trusted certificates list.
  - If **Custom Certificates** is selected, the Skype for Business phone will verify the server certificate based on the custom trusted certificates list.
  - If **All Certificates** is selected, the Skype for Business phone will verify the server certificate based on the trusted certificates list, which contains built-in and custom trusted certificates.
5. Click **Confirm** to accept the change.

## Configuring Trusted Certificate Using Configuration Files

**To configure trusted certificates using configuration files:**

1. Add/Edit trusted certificates parameters in configuration files.

The following table lists the information of parameters:

Parameters	Permitted Values	Default
<b>Static.trusted_certificates.url</b>	<b>URL within 511 characters</b>	<b>Blank</b>
<p><b>Description:</b> Configures the access URL of the custom trusted certificate used to authenticate the connecting server.</p> <p><b>Note:</b> The certificate you want to upload must be in *.pem, *.crt, *.cer or *.der format.</p> <p><b>Web User Interface:</b></p>		

Parameters	Permitted Values	Default
Security->Trusted Certificates->Load trusted certificates file <b>Phone User Interface:</b> None		
<b>Static.security.trust_certificates</b>	<b>0 or 1</b>	<b>1</b>
<b>Description:</b> Enables or disables the Skype for Business phone to only trust the server certificates in the Trusted Certificates list. <b>0</b> -Disabled <b>1</b> -Enabled <b>Web User Interface:</b> Security->Trusted Certificates->Only Accept Trusted Certificates <b>Phone User Interface:</b> None		
<b>Static.security.cn_validation</b>	<b>0 or 1</b>	<b>0</b>
<b>Description:</b> Enables or disables the Skype for Business phone to mandatorily validate the CommonName or SubjectAltName of the certificate sent by the server. <b>0</b> -Disabled <b>1</b> -Enabled <b>Web User Interface:</b> Security->Trusted Certificates->Common Name Validation <b>Phone User Interface:</b> None		
<b>Static.security.ca_cert</b>	<b>0, 1 or 2</b>	<b>2</b>
<b>Description:</b> Configures the type of certificates in the Trusted Certificates list for the Skype for Business phone to authenticate for TLS connection. <b>0</b> -Default Certificates <b>1</b> -Custom Certificates <b>2</b> -All Certificates <b>Web User Interface:</b> Security->Trusted Certificates->CA Certificates <b>Phone User Interface:</b> None		

The following shows an example of failover configurations for account 1 in the <y0000000000xx.cfg> configuration file:

```
static.trusted_certificates.url = http://192.168.1.20/tc.crt
static.security.trust_certificates = 1
static.security.cn_validation = 0
static.security.ca_cert = 2
```

2. Upload configuration files to the root directory of the provisioning server and trigger Skype for Business phones to perform an auto provisioning for configuration update.

For more information on auto provisioning, refer to

[Yealink\\_Skype\\_for\\_Business\\_HD\\_IP\\_Phones\\_Auto\\_Provisioning\\_Guide](#).

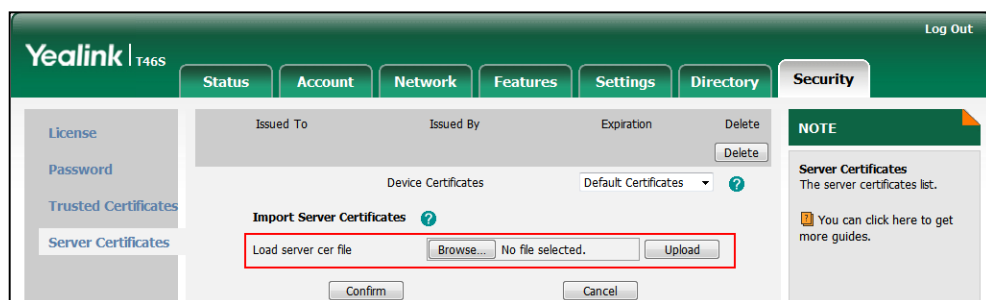
## Configuring Device Certificates on Skype for Business phones

When a client requests an SSL connection with a Skype for Business phone, the phone sends a device certificate to the client for authentication.

The phones have two built-in device certificates: a unique and a generic device certificate. The Skype for Business phone supports uploading one custom device certificate at most. The old custom device certificate will be overridden by the new one. For more information on customizing a device certificate, refer to [Appendix C Creating Custom Certificates](#) on page 13.

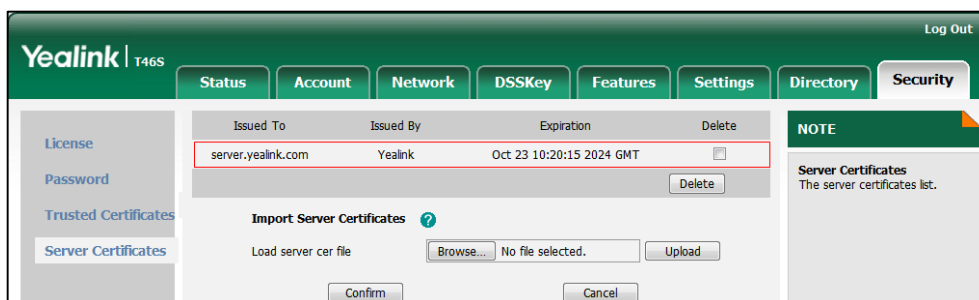
**To upload a device certificate via web user interface:**

1. Click on **Security->Server Certificates**.
2. Click **Browse** to locate the certificate (\*.pem and \*.cer) from your local system.



3. Click **Upload** to upload the certificate.

The information of the custom device certificate is displayed on the web user interface of the Skype for Business phone.



### Note

The information of built-in device certificates is not displayed on the web user interface of the Skype for Business phone.

### To configure device certificates via web user interface:

1. Click on **Security->Server Certificates**.
2. Select the desired value from the pull-down list of **Device Certificates**.
  - If **Default Certificates** is selected, the Skype for Business phone will send the unique or the generic device certificate to clients for authentication.
  - If **Custom Certificates** is selected, the Skype for Business phone will send custom certificates to clients for authentication.
3. Click **Confirm** to accept the change.

## Configuring Device Certificates Using Configuration Files

### To configure device certificates using configuration files:

1. Add/Edit device certificates parameters in the configuration file (e.g., y000000000066.cfg).

The following table lists the information of parameters:

Parameters	Permitted Values	Default
<b>static.server_certificates.url</b>	<b>URL within 511 characters</b>	<b>Blank</b>
<p><b>Description:</b> Configures the access URL of the certificate the Skype for Business phone sends for authentication.</p> <p><b>Note:</b> The certificate you want to upload must be in *.pem or *.cer format.</p> <p><b>Web User Interface:</b> Security-&gt;Server Certificates-&gt;Load server cer file</p>		

Parameters	Permitted Values	Default
<b>Phone User Interface:</b> None		
<b>static.security.dev_cert</b>	<b>0 or 1</b>	<b>0</b>
<p><b>Description:</b> Configures the type of the device certificates for the Skype for Business phone to send for TLS authentication.</p> <p><b>0</b>-Default Certificates <b>1</b>-Custom Certificates</p> <p><b>Web User Interface:</b> Security-&gt;Server Certificates-&gt;Device Certificates</p> <p><b>Phone User Interface:</b> None</p>		

The following shows an example of failover configurations for account 1 in the <y0000000000xx.cfg> configuration file:

```
static.server_certificates.url = http://192.168.1.20/ca.pem
static.security.dev_cert = 0
```

2. Upload configuration files to the root directory of the provisioning server and trigger Skype for Business phones to perform an auto provisioning for configuration update.

For more information on auto provisioning, refer to

[Yealink\\_Skype\\_for\\_Business\\_HD\\_IP\\_Phones\\_Auto\\_Provisioning\\_Guide](#).

## Using Certificates on Skype for Business phones


Certificates are used in mutual TLS authentication. It allows the server and the Skype for Business phone to authenticate each other. This could be used for tasks like HTTPS provisioning or SIPs signaling.

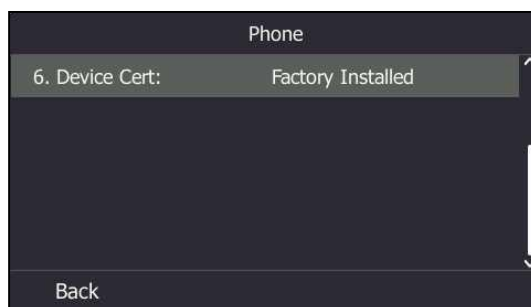
If you intend to use certificates on Skype for Business phones, they must exist on the Skype for Business phones. Certificates issued by Yealink Certificate Authority (CA) are pre-loaded on Skype for Business phones and a custom certificate can be uploaded to Skype for Business phones. You can check whether a built-in device certificate is installed on your phone via phone user interface only. A built-in device certificate can be either a unique certificate (based on the MAC address) or a generic certificate. Each certificate is issued by the Yealink Certificate Authority (CA), so a server can verify that a device is truly a Yealink device (not a malicious device or software masquerading as a Yealink device).

**To check whether a built-in device certificate is installed on your phone via phone user interface:**

1. Press **Menu->Status->Phone**.



2. Press  to scroll to **Device Cert** and read status.
  - If the status is **Factory Installed**, it means there is a valid device certificate installed on your phone and the valid certificate is a unique certificate.
  - If the status is **Not Installed**, it means there is no valid device certificate installed on your phone.



### Note

The followings you need to know:

- It is not possible to modify or delete the built-in device certificates.
- Resetting the phone to factory defaults will not affect the built-in device certificates at all. The built-in device certificates and associated private keys are stored on the phone in its non-volatile memory as part of the manufacturing process.
- Resetting the phone to factory defaults will delete custom certificates by default. But this feature is determined by the value of the parameter "phone\_setting.reserve\_certs\_enable". For more information on the configuration parameter, refer to [Yealink Skype for Business Edition HD IP Phones Description of Configuration Parameters in CFG Files](#).

When the Skype for Business phone initiates an SSL connection, we consider it as a client. The server will send its certificate to the Skype for Business phone and the Skype for Business phone verifies this certificate. If "Mutual TLS Authentication Required" is enabled on your server, the Skype for Business phone should send its certificate to the server as well. The client certificate is the same as the server certificate.

The following shows a scenario of a mutual TLS authentication. In this scenario, the Skype for Business phone acts as a client and connects to the HTTPS server for provisioning.

#### To use custom device certificates for mutual TLS authentication:

1. Create CA, server and client certificates. For more information, refer to [Appendix C Creating Custom Certificates](#) on page 13.
2. Install CA and server certificates on your server. For more information, refer to the online resource.
3. Upload a CA certificate (trusted certificate) and a client certificate (device certificate) on your Skype for Business phone. For more information, refer to [Configuring Trusted Certificates on Skype for Business phones](#) on page 2 and [Configuring Device Certificates on Skype for Business phones](#) on page 6.

4. Check if **Only Accept Trusted Certificates** option has been enabled on the Skype for Business phone.
  - If Yes, go to step 5.
  - If No, please enable **Only Accept Trusted Certificates** option. For more information, refer to [Configuring Trusted Certificates on Skype for Business phones](#) on page 2.
5. Check if **CA Certificates** option has been configured as **Custom Certificates** or **All Certificates** on the Skype for Business phone.
  - If Yes, go to step 6.
  - If No, please configure **CA Certificates** option. For more information, refer to [Configuring Trusted Certificates on Skype for Business phones](#) on page 2.
6. Check if **Device Certificates** option has been configured as **Custom Certificates** on the Skype for Business phone.
  - If Yes, go to step 7.
  - If No, please configure **Device Certificates** option. For more information, refer to [Configuring Device Certificates on Skype for Business phones](#) on page 6.
7. Make sure that “Mutual TLS Authentication Required” is enabled on your server.
8. Make sure that auto provisioning URL on the Skype for Business phone begins with https, e.g., “https://mydomain.com/autop/”.
9. Configure auto provisioning settings. For example, mark the **On** radio box in the **Power On** field, and then reboot the Skype for Business phone. The Skype for Business phone will perform auto provisioning with mutual TLS authentication.

For more information on auto provisioning, refer to

[Yealink\\_Skype\\_for\\_Business\\_HD\\_IP\\_Phones\\_Auto\\_Provisioning\\_Guide](#).

The screenshot shows the Yealink T46S web interface with the 'Settings' tab selected. The 'Auto Provision' section is visible, containing various configuration options. Two fields are highlighted with red boxes: 'Server URL' and 'Power On'. The 'Server URL' field contains the text 'http://mydomain.com/autop/'. The 'Power On' radio button is selected, indicating that auto provisioning is enabled. Other visible settings include PNP Active, DHCP Active, Custom Option (128~254), DHCP Option Value, User Name, Password, Common AES Key, MAC-Oriented AES Key, Zero Active, Wait Time (1~100s), Repeatedly, Interval (Minutes), Weekly, and Time.

Setting	Value
PNP Active	<input type="radio"/> On <input checked="" type="radio"/> Off
DHCP Active	<input checked="" type="radio"/> On <input type="radio"/> Off
Custom Option(128~254)	160,161
DHCP Option Value	MS-UC-Client
Server URL	http://mydomain.com/autop/
User Name	
Password	*****
Common AES Key	*****
MAC-Oriented AES Key	*****
Zero Active	Disabled
Wait Time(1~100s)	5
Power On	<input checked="" type="radio"/> On <input type="radio"/> Off
Repeatedly	<input type="radio"/> On <input checked="" type="radio"/> Off
Interval(Minutes)	1440
Weekly	<input type="radio"/> On <input checked="" type="radio"/> Off
Time	00 : 00 - 00 : 00

## Appendix A X.509 Certificate Structure

An X.509 digital certificate is a digitally signed statement. The X.509 standard defines what information can go into a certificate.

The following table describes fields of a X.509 certificate:

Field	Description
Version	Identifies the version of the certificate. It must be version 3 if extensions are present. Most currently valid X.509 certificates follow version 3.
Serial number	Identifies a unique serial number per certificate.
Signature	Identifies the algorithm used by the Certificate Authority (CA) to sign the certificate.
Issuer	Identifies the entity that has issued the certificate.
Validity	Identifies a period during which the CA warrants that it will maintain information about the status of the certificate.
Subject	Identifies the entity associated with the public key stored in the subject public key information field.
Subject Public Key Information	Carries the public key and identifies the algorithm with which the key is used.
Extensions	Define a sequence of one or more certificate extensions that cover information about keys and procedures, attributes of owners and issuers, and constraints of the certificate path. They appear only if the version is 3.

## Appendix B: Trusted Certificate Authority List

Yealink Skype for Business phones trust the following CAs by default:

- DigiCert High Assurance EV Root CA
- Deutsche Telekom AG Root CA-2
- Equifax Secure Certificate Authority
- Equifax Secure eBusiness CA-1
- Equifax Secure Global eBusiness CA-1
- GeoTrust Global CA
- GeoTrust Global CA2
- GeoTrust Primary CA
- GeoTrust Primary CA G2 ECC

- GeoTrust Universal CA
- GeoTrust Universal CA2
- Thawte Personal Freemail CA
- Thawte Premium Server CA
- Thawte Primary Root CA - G1 (EV)
- Thawte Primary Root CA - G2 (ECC)
- Thawte Primary Root CA - G3 (SHA256)
- Thawte Server CA
- VeriSign Class 1 Public Primary Certification Authority
- VeriSign Class 1 Public Primary Certification Authority - G2
- VeriSign Class 1 Public Primary Certification Authority - G3
- VeriSign Class 2 Public Primary Certification Authority - G2
- VeriSign Class 2 Public Primary Certification Authority - G3
- VeriSign Class 3 Public Primary Certification Authority
- VeriSign Class 3 Public Primary Certification Authority - G2
- VeriSign Class 3 Public Primary Certification Authority - G3
- VeriSign Class 3 Public Primary Certification Authority - G4
- VeriSign Class 3 Public Primary Certification Authority - G5
- VeriSign Class 4 Public Primary Certification Authority - G2
- VeriSign Class 4 Public Primary Certification Authority - G3
- VeriSign Universal Root Certification Authority
- Microsoft\_IT\_SSL\_SHA2.cer
- CNNIC\_Root.cer
- baltimoreCyberTrust.cer
- UserTrust.cer
- AAA Certificate Services.cer
- DigiCert Assured ID Root CA.cer
- Entrust.net Certification Authority (2048).cer
- Entrust Root Certification Authority
- Entrust.net Secure Server Certification Authority
- GTE CyberTrust Global Root.cer
- Starfield Class 2 Certification Authority.cer
- AddTrust External CA Root
- Go Daddy Class 2 Certification Authority
- StartCom Certification Authority
- DST Root CA X3
- ISRG Root X1 (intermediate certificates: Let's Encrypt Authority X1 and Let's Encrypt

Authority X2 are signed by the root certificate ISRG Root X1.)

- Baltimore CyberTrust Root
- DigiCert Cloud Services CA-1
- D-Trust Root Class 3 CA 2 2009
- AddTrust External CA Root
- Starfield Root Certificate Authority - G2

#### Note

Yealink endeavors maintain a built-in list of the most commonly used CA Certificates. Due to memory constraints, we cannot ensure a complete set of certificates. If you are using a certificate from a commercial Certificate Authority not in the list above, you can send a request to your local distributor. At this point, you can upload your particular CA certificate into your phone. For more information on uploading a custom CA certificate, refer to [Configuring Trusted Certificates on Skype for Business phones](#) on page 2.

## Appendix C Creating Custom Certificates

You can create and use your own CA to issue certificates. This requires a tool that supports SSL and TLS protocols. We recommend you to use OpenSSL on Linux. The OpenSSL software is available for free online: <http://www.openssl.org/source/>. If Windows is required, we recommend you to use the apache server with OpenSSL. The software is available for free online: <http://httpd.apache.org/download.cgi>. Be sure to install OpenSSL before you read the following instructions. For more information, refer to the network resource.

This appendix includes information on:

- Creating a self-signed CA
- Issuing certificates

#### To create a self-signed CA:

1. Open a terminal window.
2. Execute the following command to create a RSA private key for your CA:

```
[root@localhost openssl-0.9.8k]#openssl genrsa -out ca.key 1024
```

```
Generating RSA private key, 1024 bit long modulus
```

```
.....+++++
```

```
.....+++++
```

```
e is 65537 (0x10001)
```

The command will generate a **ca.key** file.

3. Execute the following command to create a self-signed CA certificate with the RSA private key:

```
[root@localhost openssl-0.9.8k]#openssl req -new -x509 -days 3650 -key ca.key -out ca.crt
```

```
You are about to be asked to enter information that will be incorporated into your certificate
```

request.

What you are about to enter is what is called a Distinguished Name or a DN.

There are quite a few fields but you can leave some blank. For some fields there will be a default value.

If you enter '.', the field will be left blank.

----

Country Name (2 letter code) [US]:CN

State or Province Name (full name) [Wisconsin]:FJ

Locality Name (eg, city) [Madison]:XM

Organization Name (eg, company) [My Company Ltd]: Yealink

Organizational Unit Name (eg, section) []:

Common Name (eg, your name or your server's hostname) []:Yealink CA

Email Address []:support@yealink.com

You will be prompted to enter a few attributes (e.g., State, organization or Common Name (CN)). The command will generate a self-signed X.509 certificate valid for ten years (3650 days).

You can execute the following command to see the details of this certificate.

```
[root@localhost openssl-0.9.8k]#openssl x509 -noout -text -in ca.crt
```

A server certificate is a digital certificate issued to a server by a CA. It verifies the server's identity for the client so that the client can securely browse the server. After the server certificate is issued, you need to install the certificate on the server.

#### To issue a server certificate:

1. Open a terminal window.
2. Execute the following command to create a RSA private key for your server:

```
[root@localhost openssl-0.9.8k]#openssl genrsa -out server.key 1024
```

Generating RSA private key, 1024 bit long modulus

.....+++++

.....+++++

e is 65537 (0x10001)

The command will generate a **server.key** file.

3. Execute the following command to create a server Certificate Signing Request (CSR) with the server RSA private key:

```
[root@localhost openssl-0.9.8k]# openssl req -new -key server.key -out server.csr
```

You are about to be asked to enter information that will be incorporated into your certificate request.

What you are about to enter is what is called a Distinguished Name or a DN.

There are quite a few fields but you can leave some blank. For some fields there will be a default value.

If you enter '.', the field will be left blank.

-----

Country Name (2 letter code) [US]:**CN**State or Province Name (full name) [Wisconsin]:**FJ**Locality Name (eg, city) [Madison]:**XM**Organization Name (eg, company) [My Company Ltd]:**Yealink**

Organizational Unit Name (eg, section) []:

Common Name (eg, your name or your server's hostname) []:**server.yealink.com**

Email Address []:support@yealink.com

Please enter the following 'extra' attributes

to be sent with your certificate request

A challenge password []:**1234567890**

An optional company name []:

You will be prompted to enter a few attributes (e.g., State, organization or Common Name (CN)). The command will generate a **server.csr** file.

**Note**

The Common Name (CN) in the server certificate must match the name supplied as the server. This is because the Skype for Business phone does not perform a DNS lookup, but only performs a simple string comparison. The use of an IP address is also valid.

- Execute the following command to issue your server certificate with ca.crt and ca.key generated above:

```
[root@localhost openssl-0.9.8k]#openssl x509 -days 365 -CA ca.crt -CAkey ca.key -req -CAcreateserial -CAserial ca.srl -in server.csr -out server.crt
```

Signature ok

```
subject=/C=CN/ST=FJ/L=XM/O=Yealink/CN=server.yealink.com/emailAddress=support@yealink.com
```

Getting CA Private Key

The command will generate a X.509 server certificate valid for one year (365 days).

You can execute the following command to view the details of this certificate.

```
[root@localhost openssl-0.9.8k]#openssl x509 -text -in server.crt
```

A client certificate is a digital certificate issued to a client by a CA. Client certificate issue steps are very similar to server certificate. Remember to specify a unique CN.

**Execute the following commands to issue a client certificate:**

```
[root@localhost openssl-0.9.8k]#openssl genrsa -out client.key 1024
```

```
[root@localhost openssl-0.9.8k]#openssl req -new -key client.key -out client.csr
```

```
[root@localhost openssl-0.9.8k]#openssl x509 -days 365 -CA ca.crt -CAkey ca.key -req -CAcreateserial -CAserial ca.srl -in client.csr -out client.crt
```

These commands will generate a client.key file, a client.csr file and a client.crt file.

If the mutual TLS authentication is required, you need to generate a \*.pem certificate and upload

it to the Skype for Business phone.

Execute the following command to generate a client.pem file with client.crt and client.key files generated above:

```
[root@localhost openssl-0.9.8k]#cat client.crt client.key > client.pem
```



## Customer Feedback

We are striving to improve our documentation quality and we appreciate your feedback. Email your opinions and comments to [DocsFeedback@yealink.com](mailto:DocsFeedback@yealink.com).